



1505 Central AVE NE

LOCATED IN NE MINNEAPOLIS'
DYNAMIC ARTS DISTRICT

NEAR ECLECTIC SHOPPING,
RESTAURANTS AND BARS

BRICK & TIMBER CONSTRUCTION

SIGNAGE OPPORTUNITY

COVERED & SURFACE
PARKING OPTIONS

CONVENIENTLY LOCATED
OFF CENTRAL AVE NE



SPACE
AVAILABLE: UP TO

131,080 RSF



HEMPEL
REAL ESTATE

1505 central AVE NE

OFFICE/RETAIL



NET RATES: \$15-25/SF

EST. CAM/TAX: \$10



BEN KRSTNAK
BRENT JACOBSON

612.355.2608
612.355.2609

leasing@hempelcompanies.com


HEMPEL
REAL ESTATE

DRIVE

PEDAL

RIDE



1505 CENTRAL AVE NE • MPLS, MN

DINE

EXPLORE

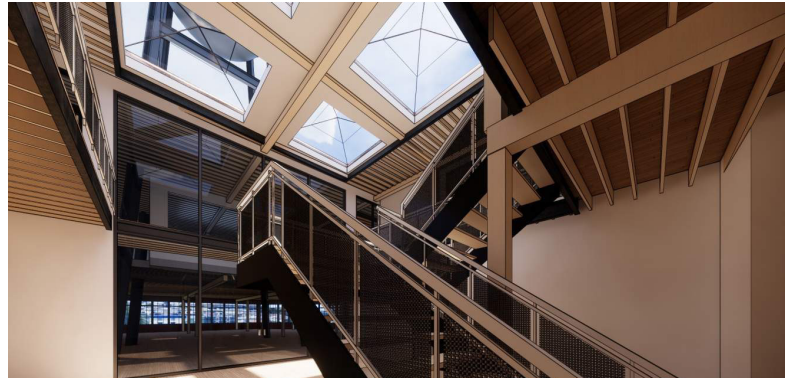
EXPERIENCE



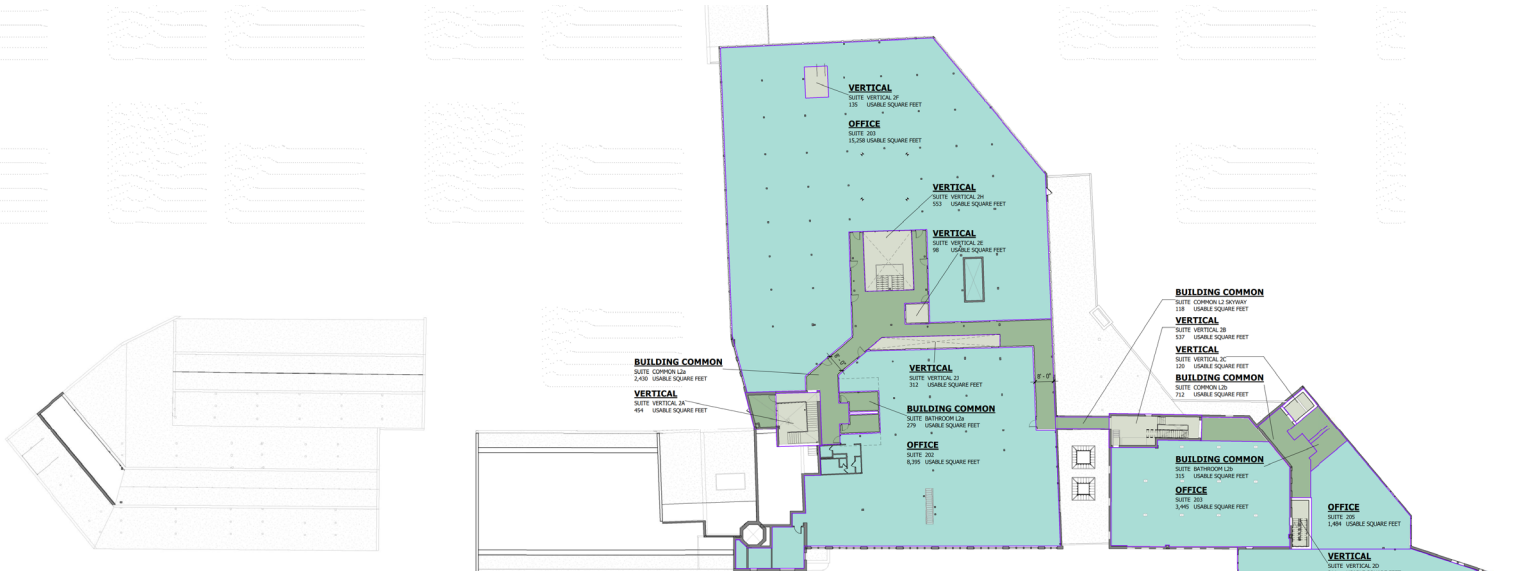
1505 CENTRAL AVE NE • MPLS, MN



RENDERINGS



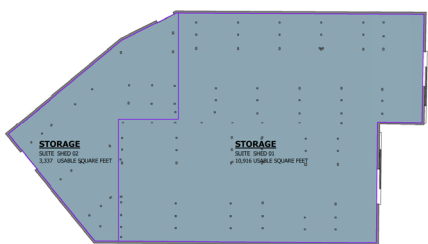
FLOOR PLANS



AREA PLAN - OPTION 02

2 LEVEL 2 - Area Plan - Rentable Option 02
002 / 3/64" = 1'-0"

- Building Common Area
- Major Vertical Penetration
- Office Area

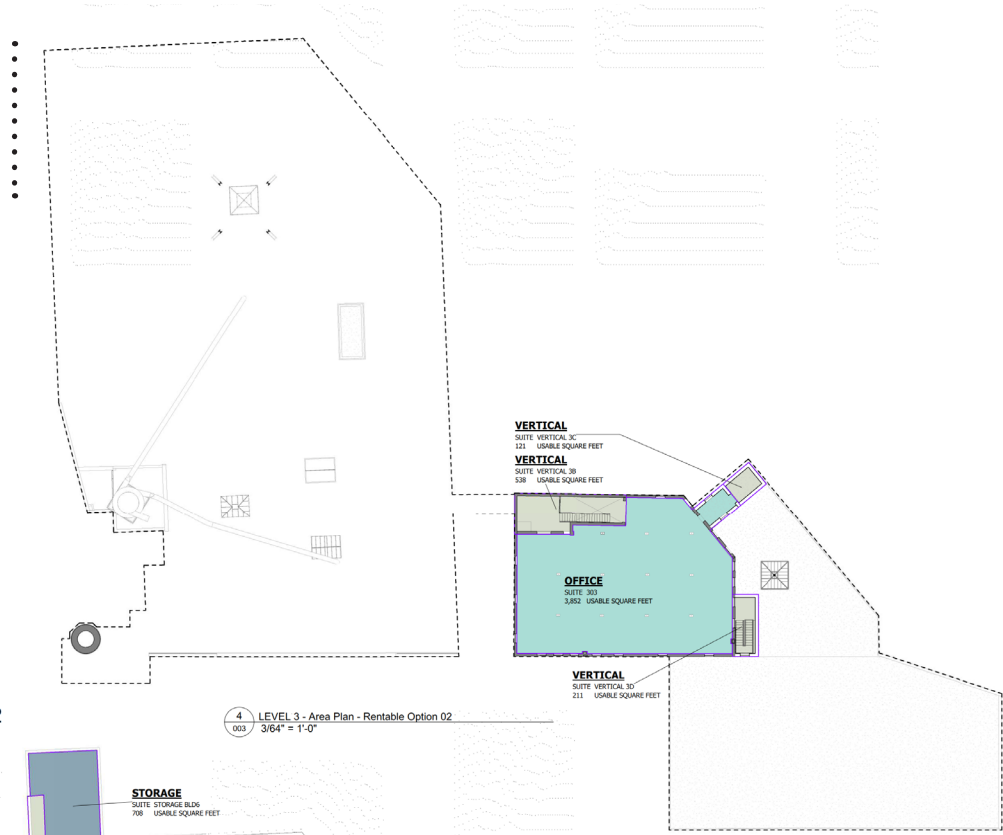


AREA PLAN - OPTION 02

3 LEVEL 1 - Area Plan - Option 02
002 / 3/64" = 1'-0"

- Building Common Area
- Major Vertical Penetration
- Office Area
- Store Area

FLOOR PLANS



AREA PLAN - OPTION 02

- Major Vertical Penetration
- Office Area

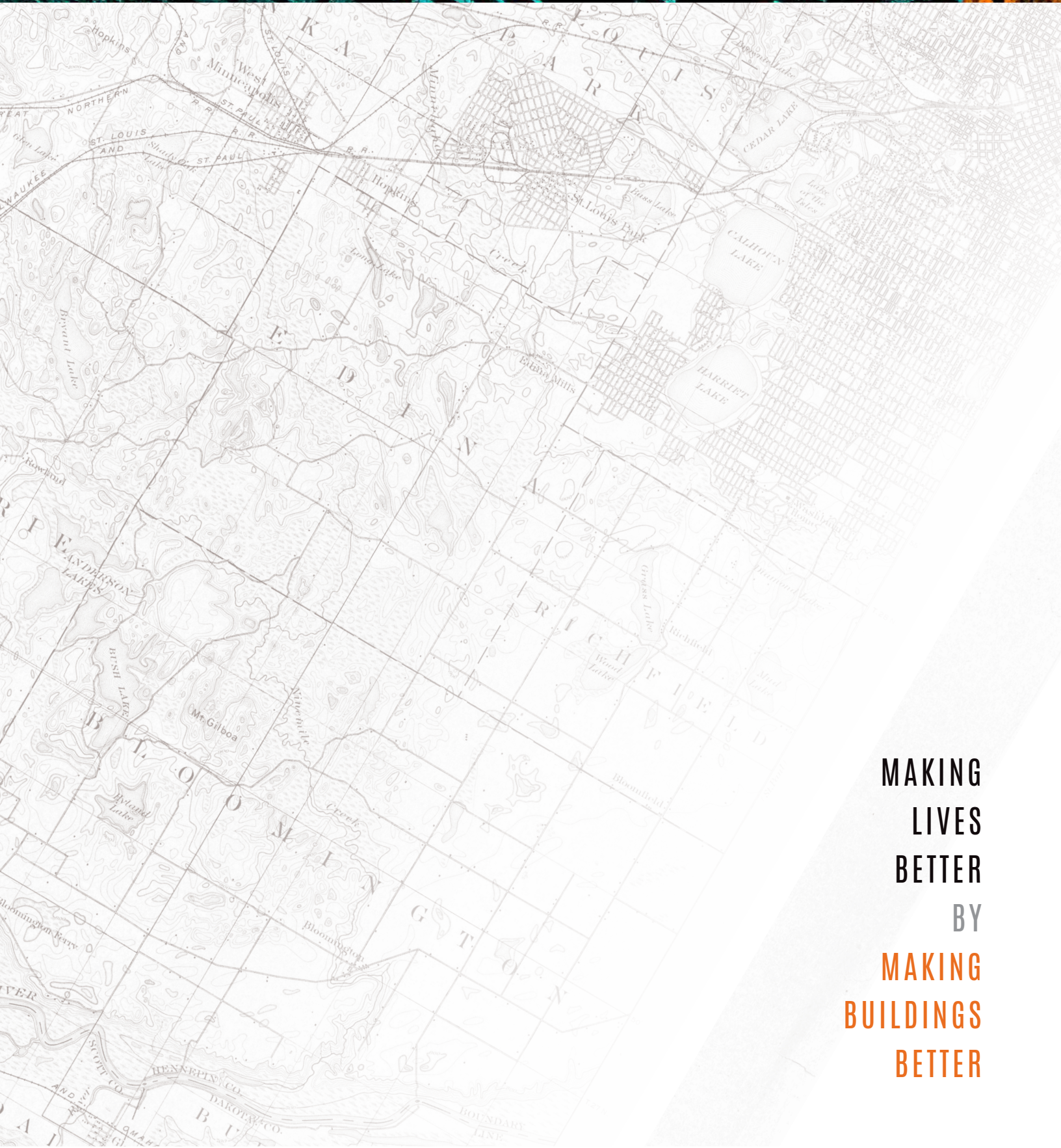
4 LEVEL 3 - Area Plan - Rentable Option 02
3/64" = 1'-0"



AREA PLAN - OPTION 02

- Major Vertical Penetration
- Store Area

5 BASEMENT - Area Plan - Option 02
3/64" = 1'-0"



MAKING
LIVES
BETTER
BY
MAKING
BUILDINGS
BETTER

1505 CENTRAL AVE NE • MPLS, MN

