



Eastvale Medical Plaza

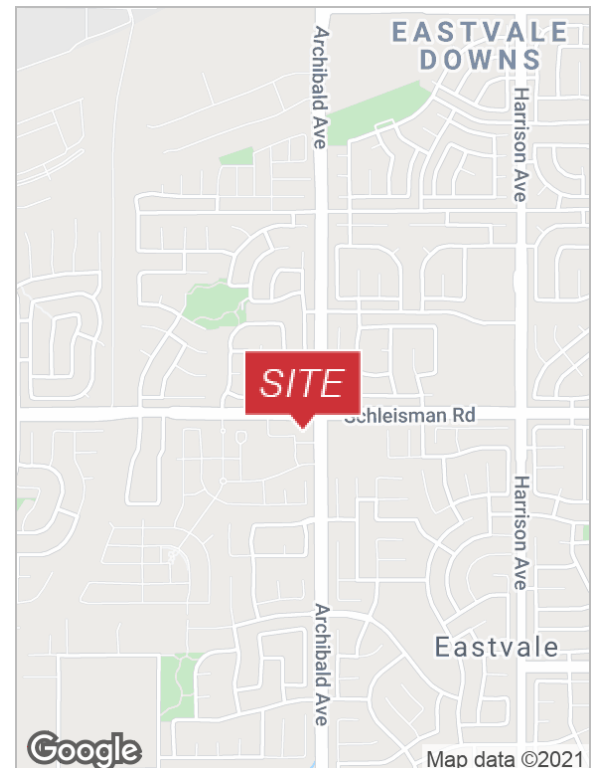
14252 Schleisman Rd
Eastvale, California 92880

Lease Highlights

- Medical & Office Available For Lease
- Units From +/-1,668 SF to +/-4,820 SF - 1st Floor
- Units From +/-2,130 SF to +/-9,637 SF - 2nd Floor.
- Join Vista Medical, CVS, Starbucks, Jack in the Box & DaVita
- High Income and demographics area
- New Construction Building with Beautiful Design

Demographics

	1 Mile	3 Miles	5 Miles
Total Households	6,030	21,603	50,967
Total Population	23,227	83,243	191,191
Average HH Income	\$117,458	\$118,191	\$111,465



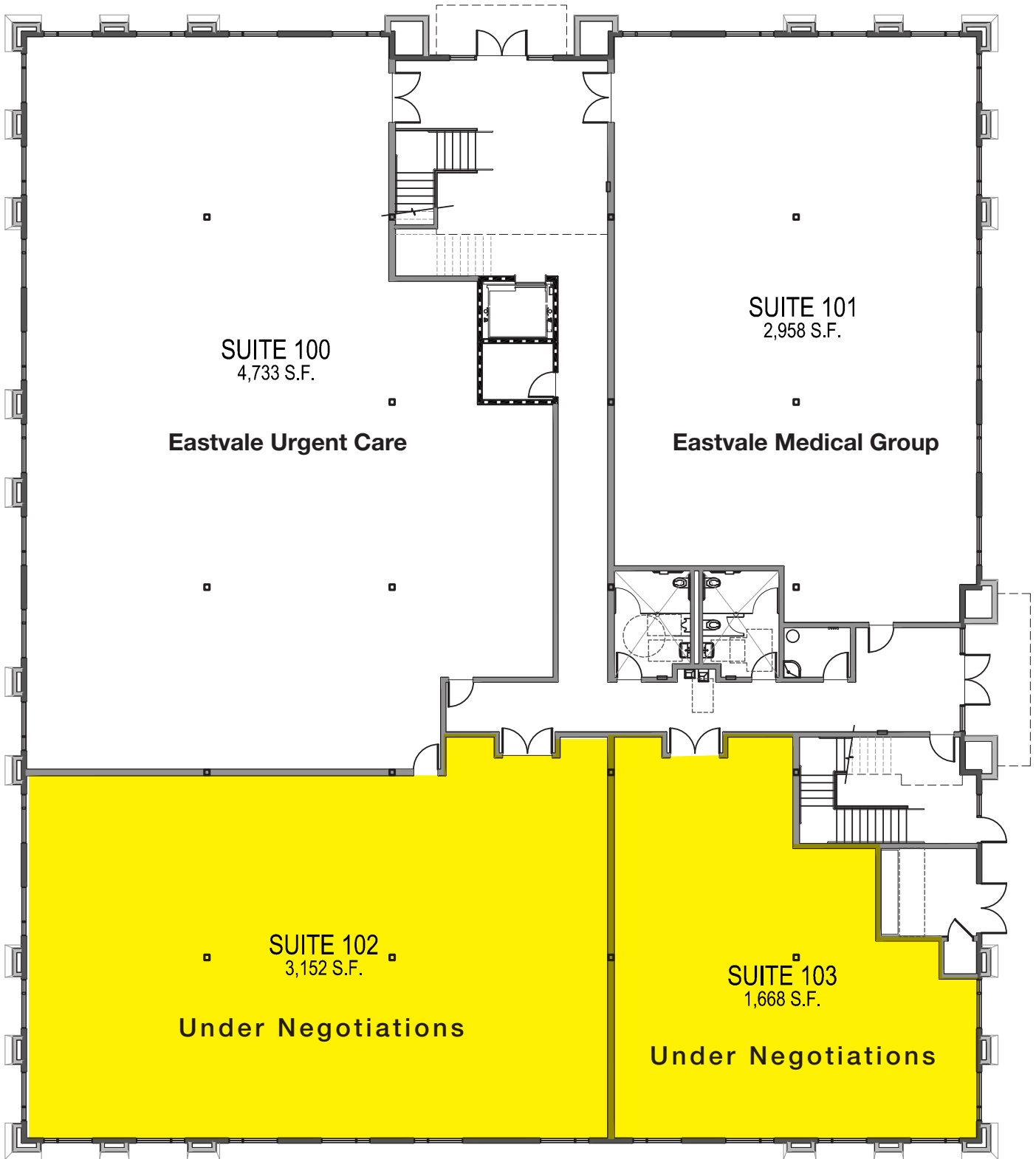
For more information

Lidia Talavera, Executive Vice President

O: 909.243.7604

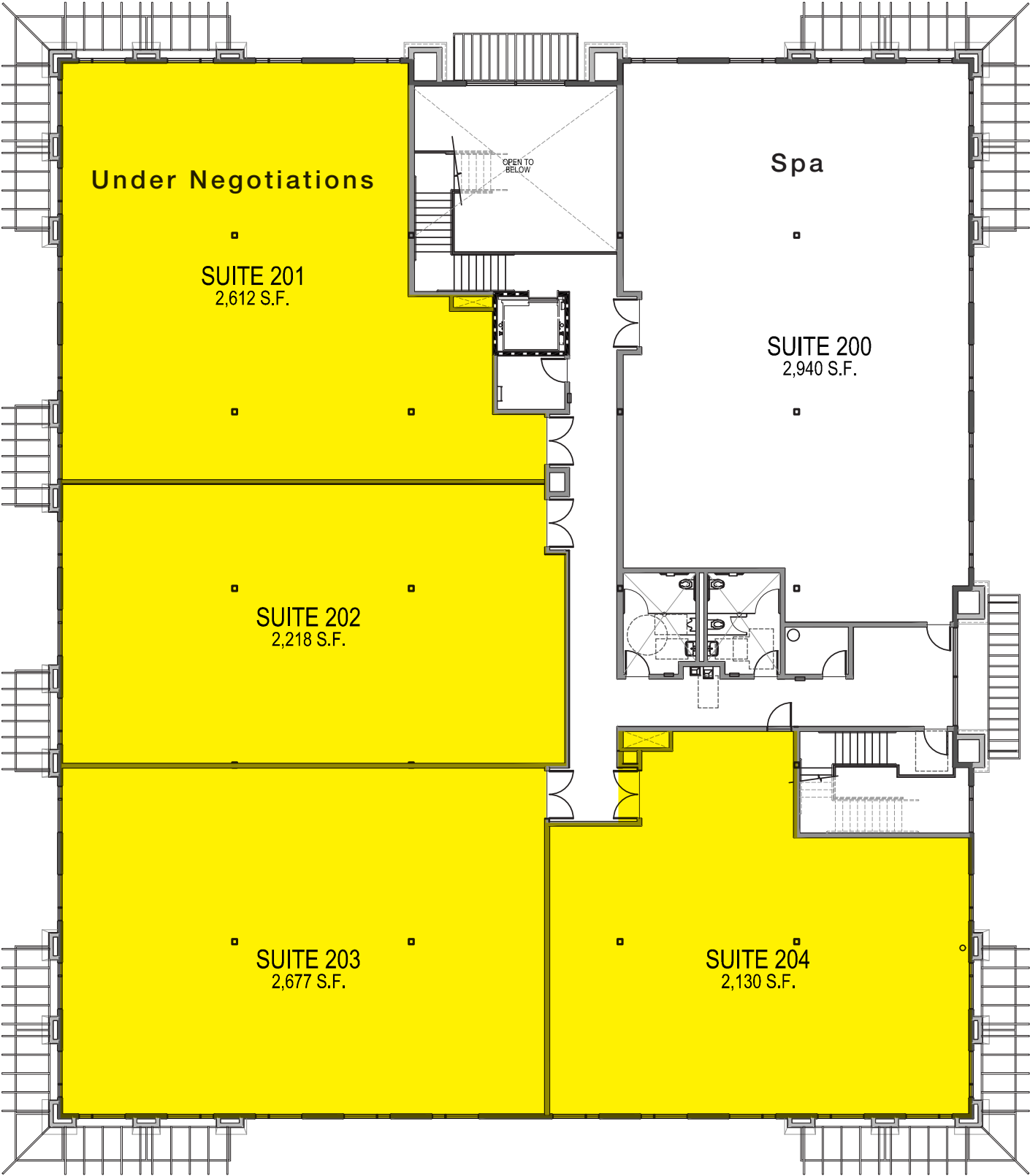
LTalavera@naicapital.com | CalDRE #01407598

First Floor



 Available

Second Floor



 Available

For Lease

Eastvale Medical Plaza



Lidia Talavera

Executive Vice President
909.243.7604
LTalavera@naicapital.com
CA CalDRE #01407598

NAICapital
COMMERCIAL REAL ESTATE SERVICES, WORLDWIDE

NO WARRANTY, EXPRESS OR IMPLIED, IS MADE AS TO THE ACCURACY OF THE INFORMATION CONTAINED HEREIN. THIS INFORMATION IS SUBMITTED SUBJECT TO ERRORS, OMISSIONS, CHANGE OF PRICE, RENTAL OR OTHER CONDITIONS, WITHDRAWAL WITHOUT NOTICE, AND IS SUBJECT TO ANY SPECIAL LISTING CONDITIONS IMPOSED BY OUR PRINCIPALS. COOPERATING BROKERS, BUYERS, TENANTS AND OTHER PARTIES WHO RECEIVE THIS DOCUMENT SHOULD NOT RELY ON IT, BUT SHOULD USE IT AS A STARTING POINT OF ANALYSIS, AND SHOULD INDEPENDENTLY CONFIRM THE ACCURACY OF THE INFORMATION CONTAINED HEREIN THROUGH A DUE DILIGENCE REVIEW OF THE BOOKS, RECORDS, FILES AND DOCUMENTS THAT CONSTITUTE RELIABLE SOURCES OF THE INFORMATION DESCRIBED HEREIN. LOGOS ARE FOR IDENTIFICATION PURPOSES ONLY AND MAY BE TRADEMARKS OF THEIR RESPECTIVE COMPANIES. NAI CAPITAL, INC. CAL DRE LIC. #02130474