



## Home Place Business Park

1476 W. 9th Street, Unit B2  
Upland, California 91786

### Property Highlights

- Industrial Condo
- 20' Clear Ceiling Height
- 2.76/1000 Parking Ratio
- 1 GL Door
- 100A/277-480V 3PH
- Fenced Yard
- ML Zoning

### OFFERING SUMMARY

Sale Price:	Subject To Offer
Lease Rate:	\$1.10 SF/month (MG)
Lot Size:	
Building Size:	4,042 SF

DEMOGRAPHICS	1 MILE	2 MILES	3 MILES
Total Households	7,295	23,819	48,881
Total Population	21,115	75,210	161,799
Average HH Income	\$56,753	\$66,763	\$72,499

**Steve Scimienti**

Vice President | 909.243.7638  
ssclimenti@naicapital.com | CalDRE #01886028





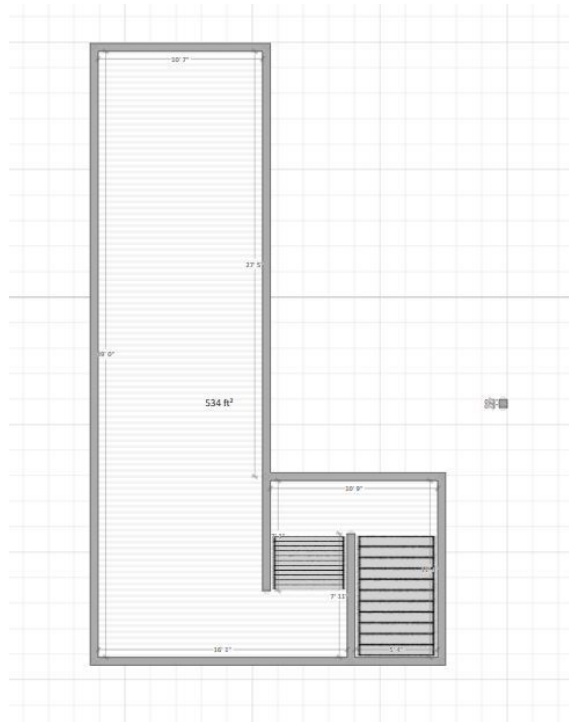
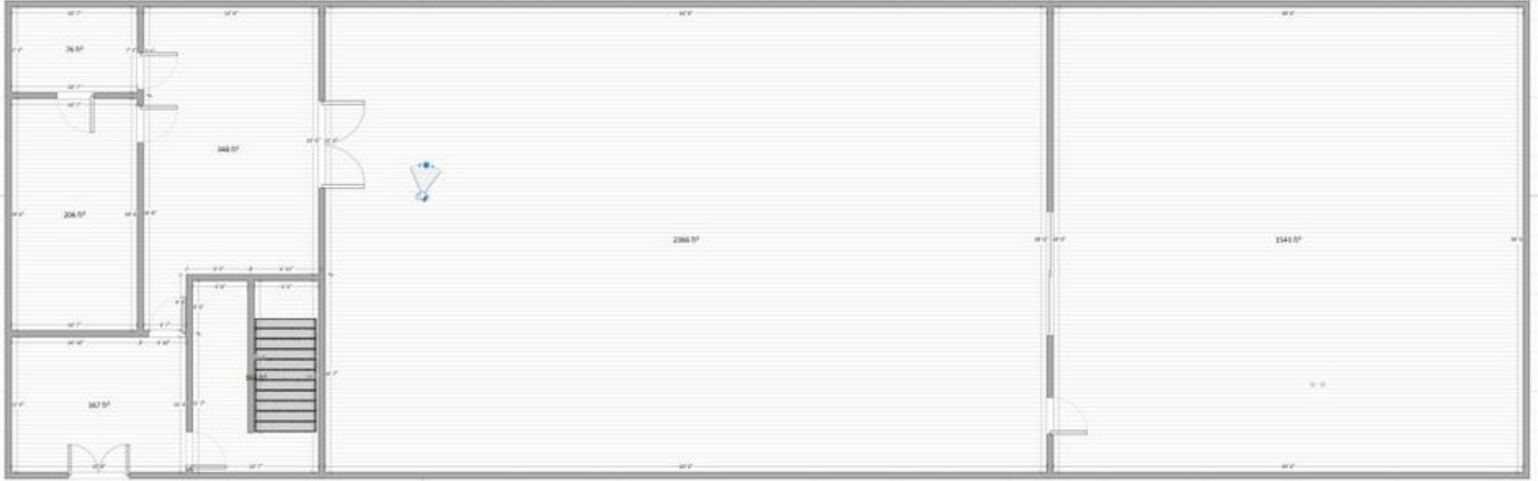
FOR SALE/LEASE



INDUSTRIAL



4,042 SF



**Steve Scimanti**  
Vice President | 909.243.7638  
ssclimenti@naicapital.com | CalDRE #01886028



www.naicapital.com

NO WARRANTY, EXPRESS OR IMPLIED, IS MADE AS TO THE ACCURACY OF THE INFORMATION CONTAINED HEREIN. THIS INFORMATION IS SUBMITTED SUBJECT TO ERRORS, OMISSIONS, CHANGE OF PRICE, RENTAL OR OTHER CONDITIONS, WITHDRAWAL WITHOUT NOTICE, AND IS SUBJECT TO ANY SPECIAL LISTING CONDITIONS IMPOSED BY OUR PRINCIPALS. COOPERATING BROKERS, BUYERS, TENANTS AND OTHER PARTIES WHO RECEIVE THIS DOCUMENT SHOULD NOT RELY ON IT, BUT SHOULD USE IT AS A STARTING POINT OF ANALYSIS, AND SHOULD INDEPENDENTLY CONFIRM THE ACCURACY OF THE INFORMATION CONTAINED HEREIN THROUGH A DUE DILIGENCE REVIEW OF THE BOOKS, RECORDS, FILES AND DOCUMENTS THAT CONSTITUTE RELIABLE SOURCES OF THE INFORMATION DESCRIBED HEREIN. LOGOS ARE FOR IDENTIFICATION PURPOSES ONLY AND MAY BE TRADEMARKS OF THEIR RESPECTIVE COMPANIES. NAI CAPITAL, INC. CAL DRE LIC. #02130474



FOR SALE/LEASE



INDUSTRIAL



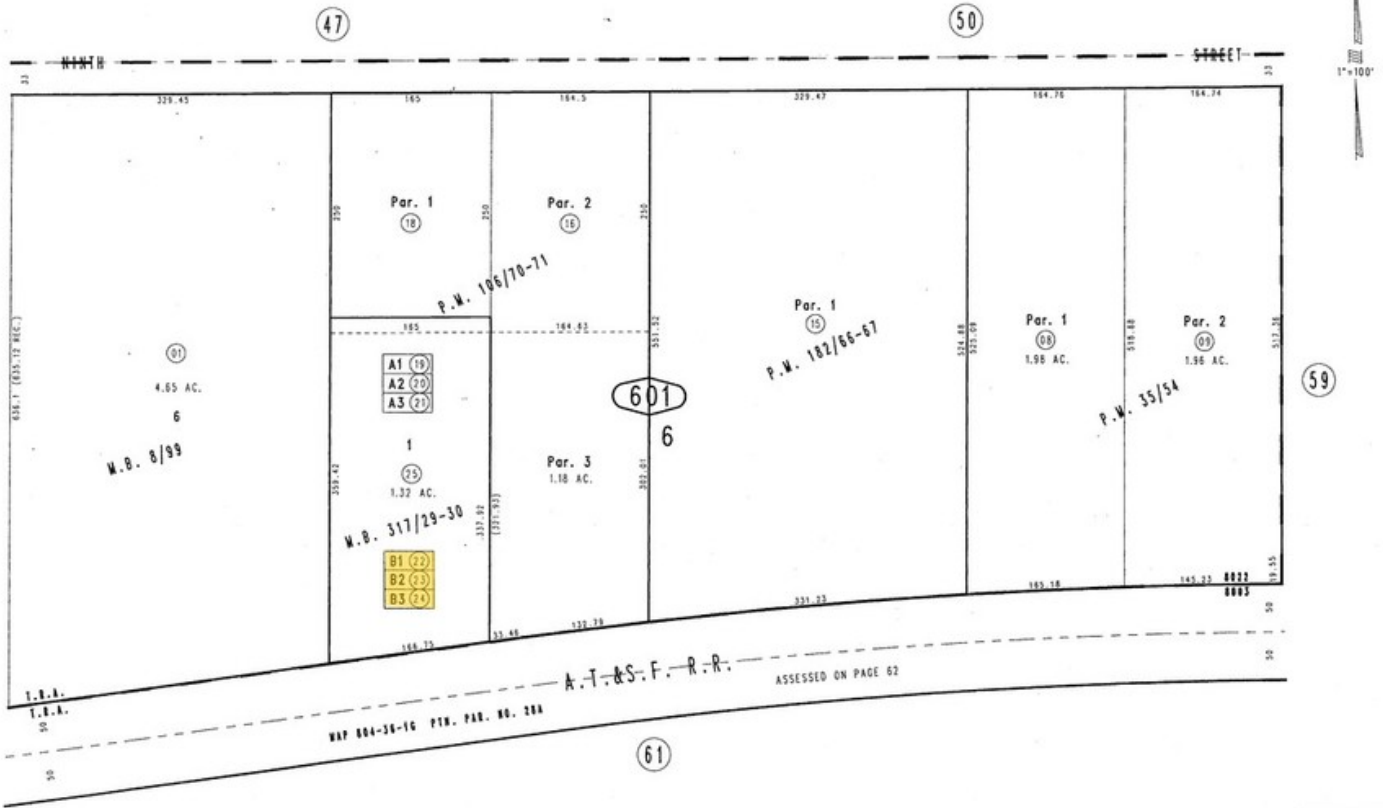
4,042 SF

THIS MAP IS FOR THE PURPOSE OF AD VALOREM TAXATION ONLY.

Ptn. Mountain View Add., M.B. 8/99

City of Upland  
Tax Rate Area  
8022,8003

1007 - 60



Tract No. 16664, W.B. 317/29-30, Condo Plan 2006-0557128  
Parcel Map No. 14973, P.M. 182/66-67  
Parcel Map No. 8751, P.M. 106/70-71  
Parcel Map No. 3605, P.M. 35/54

Ptn. S.W.1/4, Sec.12  
T.1S.,R.8W.

Assessor's Map  
Book 1007 Page 60  
San Bernardino County  
DEC 03 2008

REVISED  
05/30/06 CW  
11/07/06 KC

September 2004

**Steve Scimenti**

Vice President | 909.243.7638

ssclimenti@naicapital.com | CalDRE #01886028



www.naicapital.com

NO WARRANTY, EXPRESS OR IMPLIED, IS MADE AS TO THE ACCURACY OF THE INFORMATION CONTAINED HEREIN. THIS INFORMATION IS SUBMITTED SUBJECT TO ERRORS, OMISSIONS, CHANGE OF PRICE, RENTAL OR OTHER CONDITIONS, WITHDRAWAL WITHOUT NOTICE, AND IS SUBJECT TO ANY SPECIAL LISTING CONDITIONS IMPOSED BY OUR PRINCIPALS, COOPERATING BROKERS, BUYERS, TENANTS AND OTHER PARTIES WHO RECEIVE THIS DOCUMENT SHOULD NOT RELY ON IT, BUT SHOULD USE IT AS A STARTING POINT OF ANALYSIS, AND SHOULD INDEPENDENTLY CONFIRM THE ACCURACY OF THE INFORMATION CONTAINED HEREIN THROUGH A DUE DILIGENCE REVIEW OF THE BOOKS, RECORDS, FILES AND DOCUMENTS THAT CONSTITUTE RELIABLE SOURCES OF THE INFORMATION DESCRIBED HEREIN. LOGOS ARE FOR IDENTIFICATION PURPOSES ONLY AND MAY BE TRADEMARKS OF THEIR RESPECTIVE COMPANIES. NAI CAPITAL, INC. CAL DRE LIC. #02130474



**Steve Scimenti**

Vice President | 909.243.7638

ssclimenti@naicapital.com | CalDRE #01886028

