

## 14855 Bear Valley Rd.

Hesperia CA

### Property Highlights

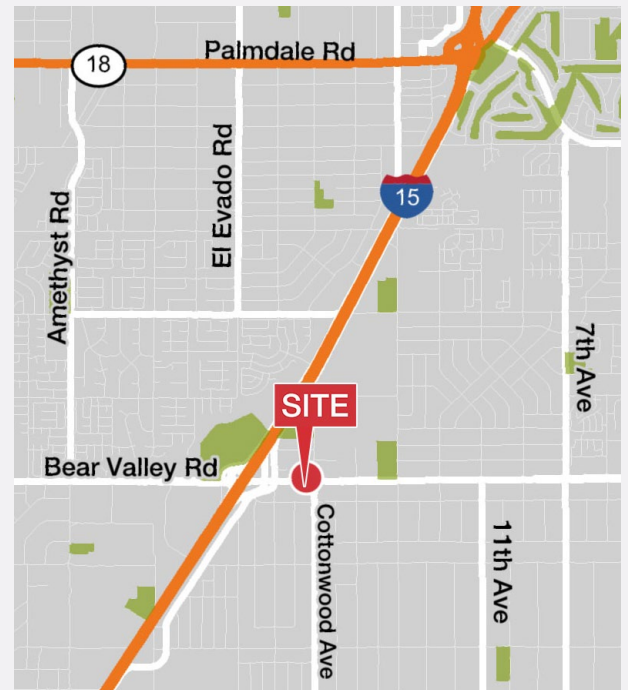
- Great QSR/Fast Food site
- On “the way home” side
- Located less than 0.5 miles from I-15

### Traffic Count

- ADT 48,100 on Bear Valley Road

2017 Demographics	1 Mile	2 Miles	3 Miles
Population	7,165	34,593	73,397
Average HH Income	\$61,859	\$63,653	\$61,549

SITE PLAN ON REVERSE



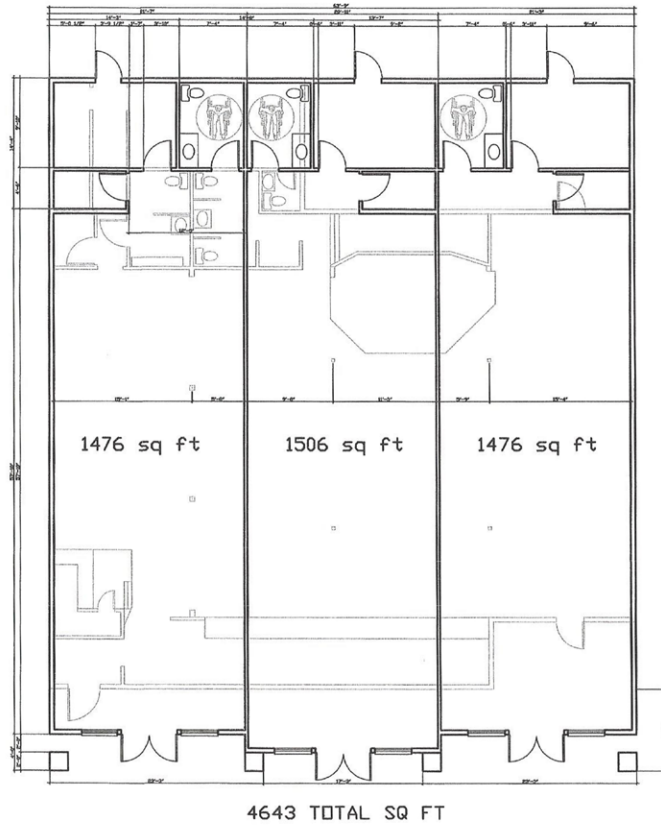
FOR MORE INFORMATION:

**Vicki R. Donkin**  
Sr. Vice President  
909 945 2339 tel  
vdonkin@naicapital.com  
CA BRE Lic. #00829449

800 N Haven Ave.  
Suite 400  
Ontario, CA 91764  
[naicapital.com](http://naicapital.com)

No warranty, express or implied, is made as to the accuracy of the information contained herein. This information is submitted subject to errors, omissions, change of price, rental or other conditions, withdrawal without notice, and is subject to any special listing conditions imposed by our principals. Cooperating brokers, buyers, tenants and other parties who receive this document should not rely on it, but should use it as a starting point of analysis, and should independently confirm the accuracy of the information contained herein through a due diligence review of the books, records, files and documents that constitute reliable sources of the information described herein. Logos are for identification purposes only and may be trademarks of their respective companies. NAI Capital, Inc. CA BRE Lic. #01990696.

## Conceptual Elevation & Floor Plan



FOR MORE INFORMATION:

**Vicki R. Donkin**  
Sr. Vice President  
909 945 2339 tel  
vdonkin@naicapital.com  
CA BRE Lic. #00829449

800 N Haven Ave.  
Suite 400  
Ontario, CA 91764  
[naicapital.com](http://naicapital.com)

No warranty, express or implied, is made as to the accuracy of the information contained herein. This information is submitted subject to errors, omissions, change of price, rental or other conditions, withdrawal without notice, and is subject to any special listing conditions imposed by our principals. Cooperating brokers, buyers, tenants and other parties who receive this document should not rely on it, but should use it as a starting point of analysis, and should independently confirm the accuracy of the information contained herein through a due diligence review of the books, records, files and documents that constitute reliable sources of the information described herein. Logos are for identification purposes only and may be trademarks of their respective companies. NAI Capital, Inc. CA BRE Lic. #01990696.