



Reservoir Ave & Lakeveiw Ave

Lakeview, California 92567

Property Highlights

- Vacant Land - 5 Separate Lots APN: 426-092-006, 426-092-002, 426-074-005, 426-073-009, 426-091-001 (Commercial Land)
- Potential to increase property size to dismiss road, additional land of about 1 ½ acres.
- Part of Unincorporated Perris – County of Riverside (Lakeview Area)
- Planned Mid-County Parkway – Freeway Planned along Ramona Expressway
- Great Location
- Adjacent to a Valero Gas station
- Zoned MU – Mixed Use – Retail/Residential
- Great for many retail uses
- PRICED TO SELL TODAY!

OFFERING SUMMARY

Sale Price:	\$890,000
Lot Size:	6.03 Acres

DEMOGRAPHICS 1 MILE 3 MILES 5 MILES

	1 MILE	3 MILES	5 MILES
Total Households	433	1,783	9,423
Total Population	1,618	6,516	36,654
Average HH Income	\$91,013	\$87,257	\$83,959
Ramona Expy	20,571 CPD		

Don Archer

Vice President | 951.346.0807

darcher@naicapital.com | CalDRE #01393449





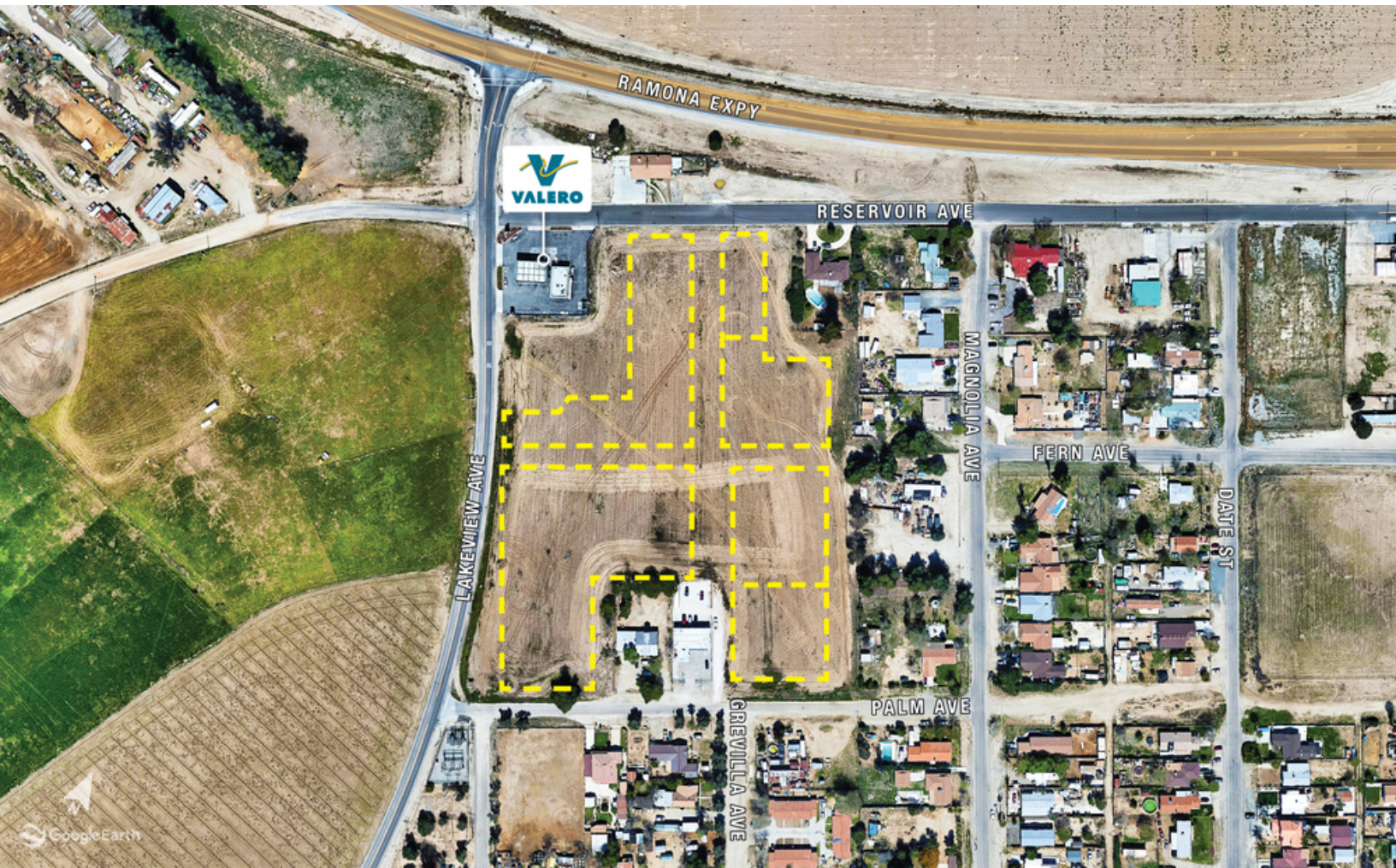
FOR SALE



LAND



6.03 ACRES



Don Archer

Vice President | 951.346.0807

darcher@naicapital.com | CalDRE #01393449



www.naicapital.com

NO WARRANTY, EXPRESS OR IMPLIED, IS MADE AS TO THE ACCURACY OF THE INFORMATION CONTAINED HEREIN. THIS INFORMATION IS SUBMITTED SUBJECT TO ERRORS, OMISSIONS, CHANGE OF PRICE, RENTAL OR OTHER CONDITIONS, WITHDRAWAL WITHOUT NOTICE, AND IS SUBJECT TO ANY SPECIAL LISTING CONDITIONS IMPOSED BY OUR PRINCIPALS, COOPERATING BROKERS, BUYERS, TENANTS AND OTHER PARTIES WHO RECEIVE THIS DOCUMENT SHOULD NOT RELY ON IT, BUT SHOULD USE IT AS A STARTING POINT OF ANALYSIS, AND SHOULD INDEPENDENTLY CONFIRM THE ACCURACY OF THE INFORMATION CONTAINED HEREIN THROUGH A DUE DILIGENCE REVIEW OF THE BOOKS, RECORDS, FILES AND DOCUMENTS THAT CONSTITUTE RELIABLE SOURCES OF THE INFORMATION DESCRIBED HEREIN. LOGOS ARE FOR IDENTIFICATION PURPOSES ONLY AND MAY BE TRADEMARKS OF THEIR RESPECTIVE COMPANIES. NAI CAPITAL, INC. CAL DRE LIC. #02130474