

**FOR LEASE** Available Immediately

# 435 Maryland Avenue






Essex, MD 21221

## Overview

Special purpose facility available for lease at the intersection of Maryland Avenue and South Taylor Avenue. Convenient access to Eastern Boulevard and in close proximity to I-695, Route 40, and I-95. This property is ideal for office, medical, or specialty purpose users. Surface parking lot located across the street.

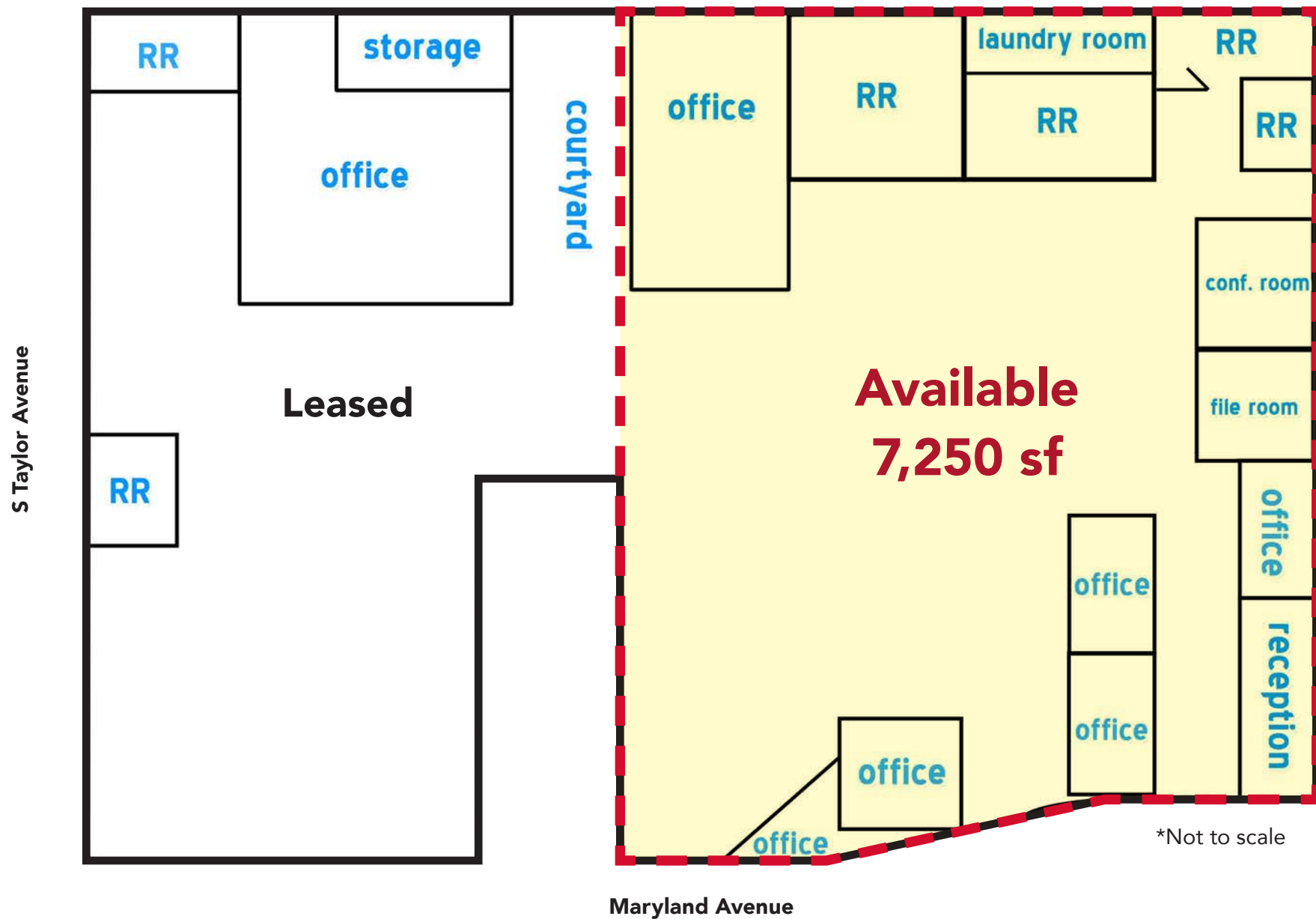
## Quick Facts

Availability	Immediate
Size	7,250 square feet
Rental Rate	Negotiable

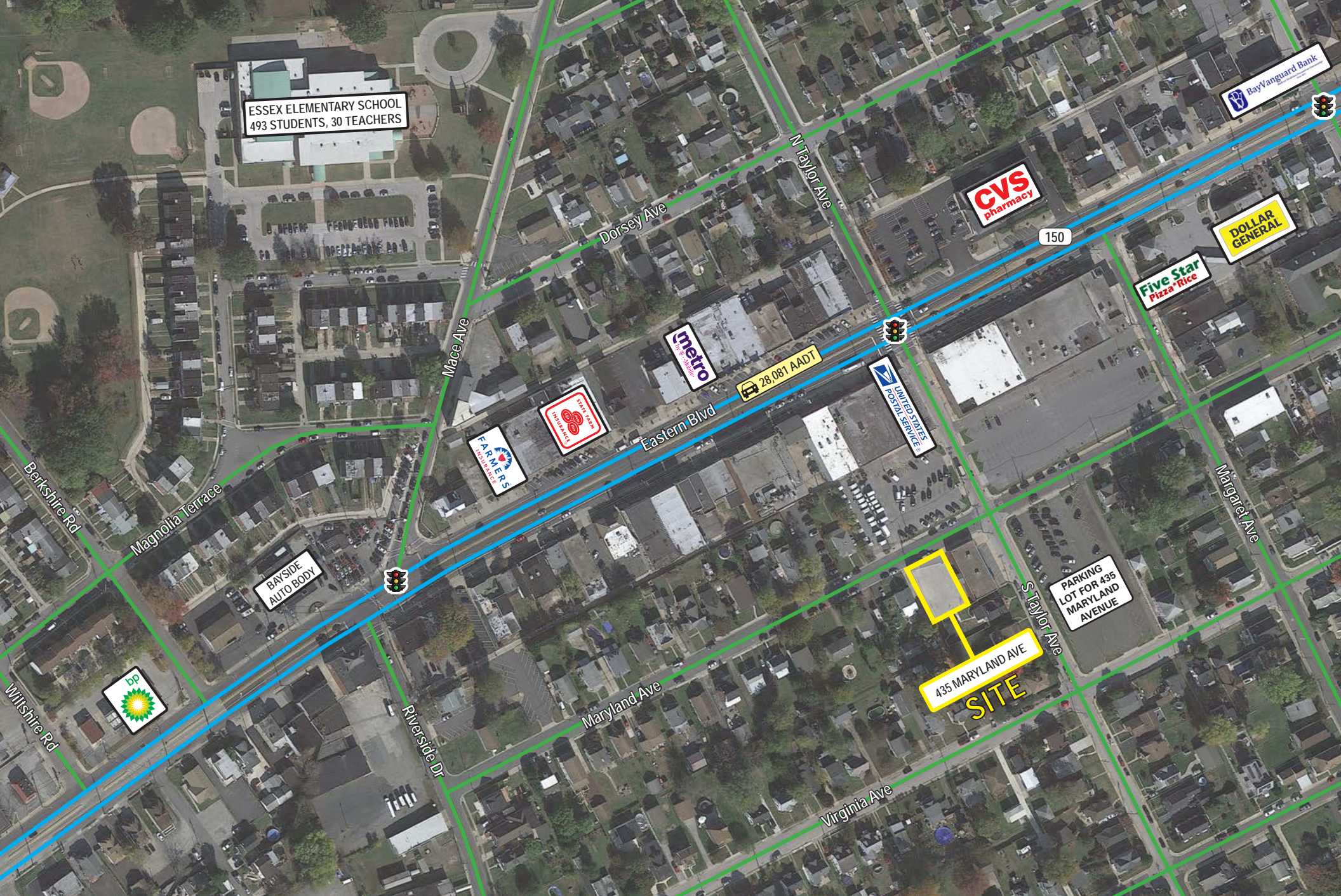
2020 Demographics	1 mile	3 mile	5 miles
 POPULATION	10,523	97,321	250,099
 HOUSEHOLDS	4,166	37,160	96,606
 AVG. HH INCOME	\$76,472	\$73,483	\$74,076
 DAYTIME POPULATION	9,362	85,042	224,932
 TRAFFIC COUNT	28,081 AADT (Eastern Boulevard)		

**segall**  
GROUP

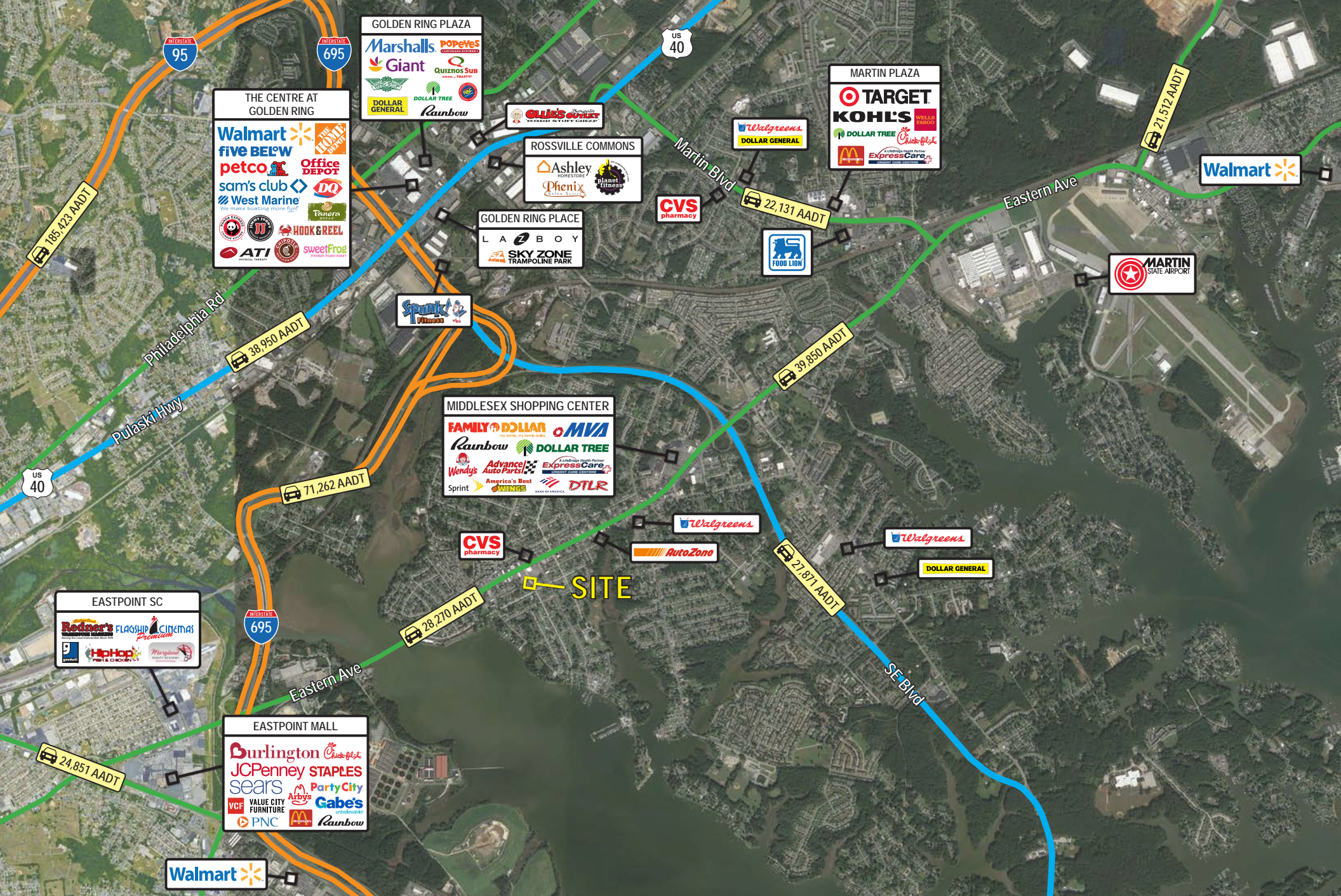
COMMERCIAL REAL ESTATE













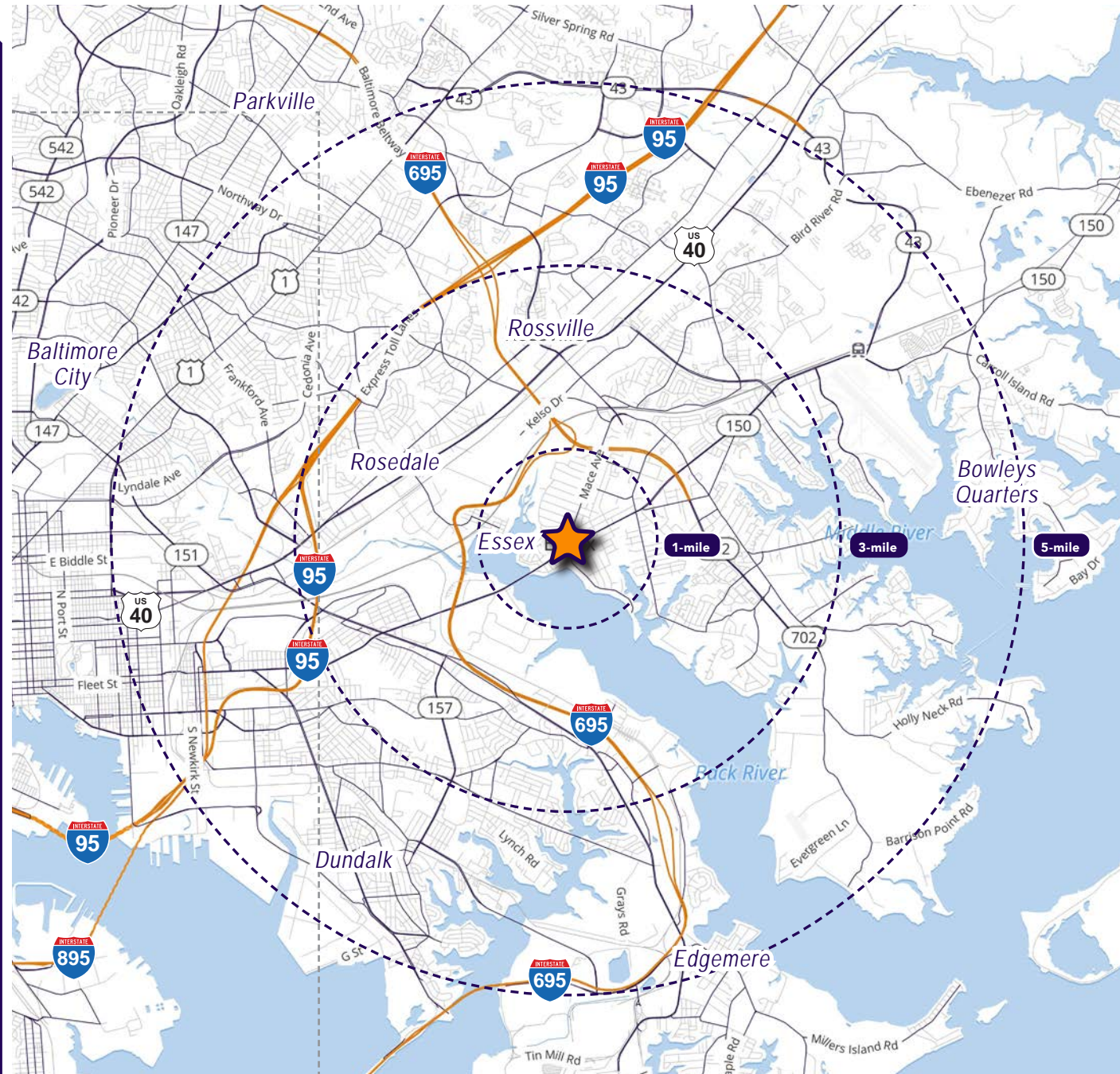
# Interested? Contact:

**Marcelo Grosberg**

✉ mgrosberg@segallgroup.com

☎ 410.753.3948

📱 443.927.6100



## Maryland

605 South Eden Street, Ste 200  
Baltimore, MD 21231  
410.753.3000

## DC • Virginia

1600 Wilson Boulevard, Ste 930  
Arlington, VA 22209  
202.833.3830

## Online

www.segallgroup.com  
Member of  
**REALTY**  
**RESOURCES**