

FOR LEASE Available Q2 2022



815 N. Prince Frederick Boulevard






Prince Frederick, MD 20678

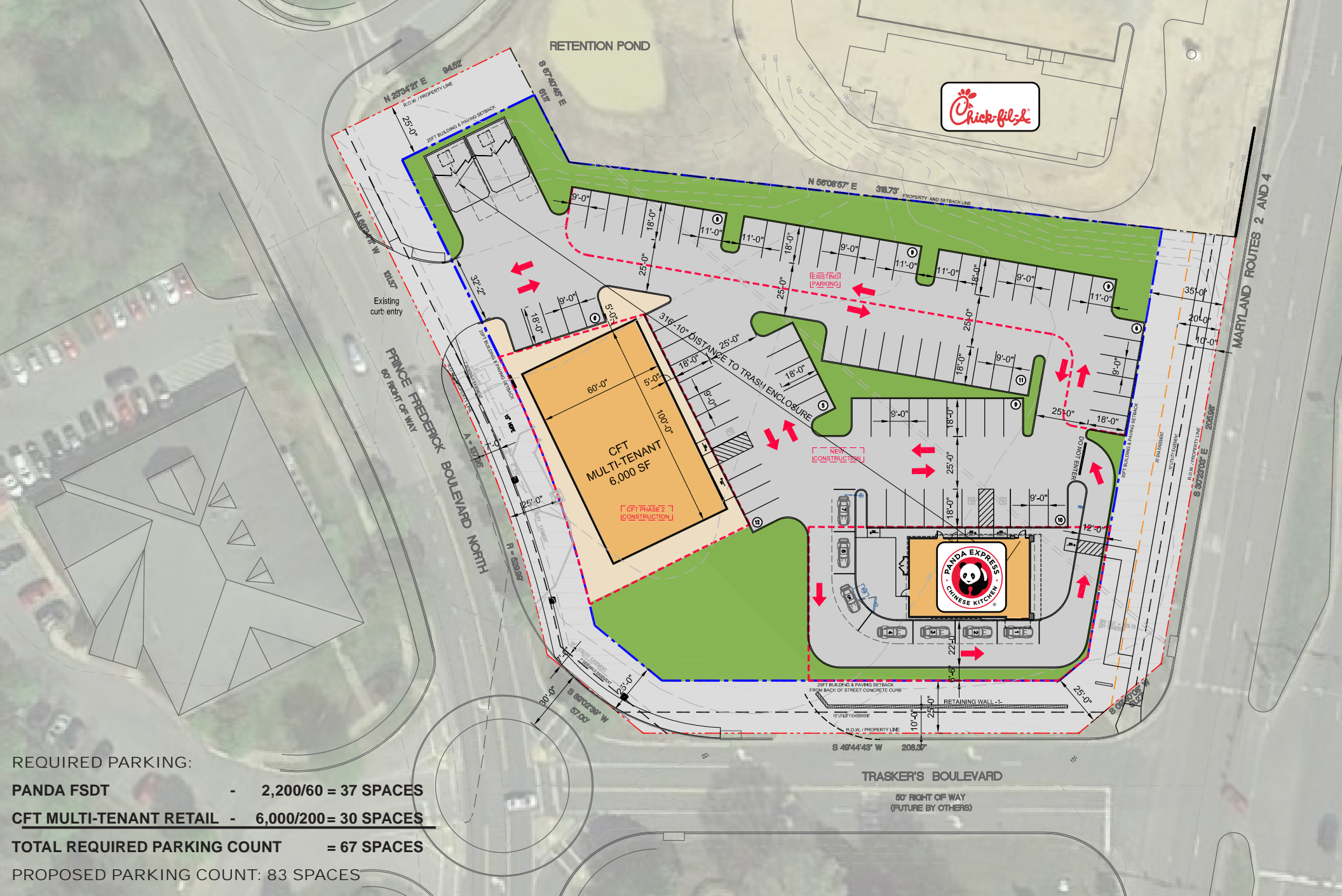
Overview

Proposed multi-tenant building at a signalized intersection with convenient access to Solomons Island Road. The site is located within the main regional draw among other national retail and within close proximity to Calvert Health Medical Center and Calvert area schools.

Quick Facts

Availability	Q2 2022
Size	Up to 6,000 square feet
Rental Rate	Negotiable
Net Charges	\$9.00 per square foot (Estimated)
Zoning	TC - Town Center

2020 Demographics	3 miles	5 miles	10 miles
 POPULATION	10,300	23,099	69,157
 HOUSEHOLDS	3,550	7,739	23,610
 AVG. HH INCOME	\$123,752	\$138,636	\$143,136
 DAYTIME POPULATION	12,262	22,945	58,910
 TRAFFIC COUNTS	40,441 AADT (Solomons Island Road)		





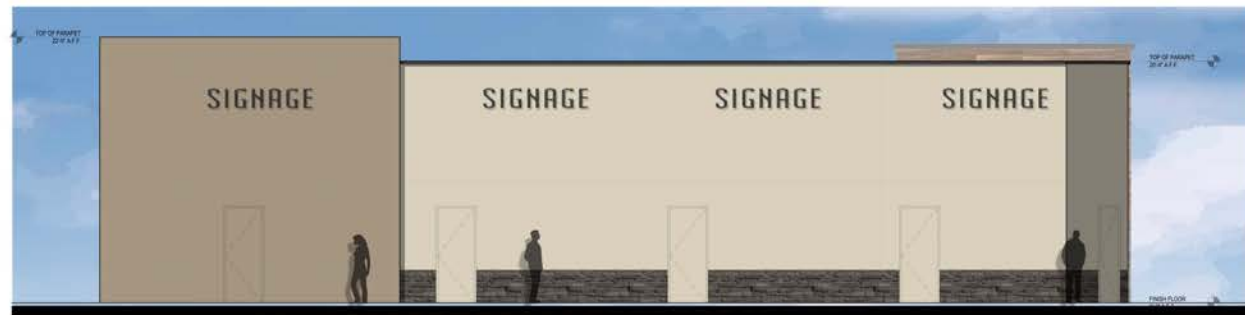
SOUTH ELEVATION



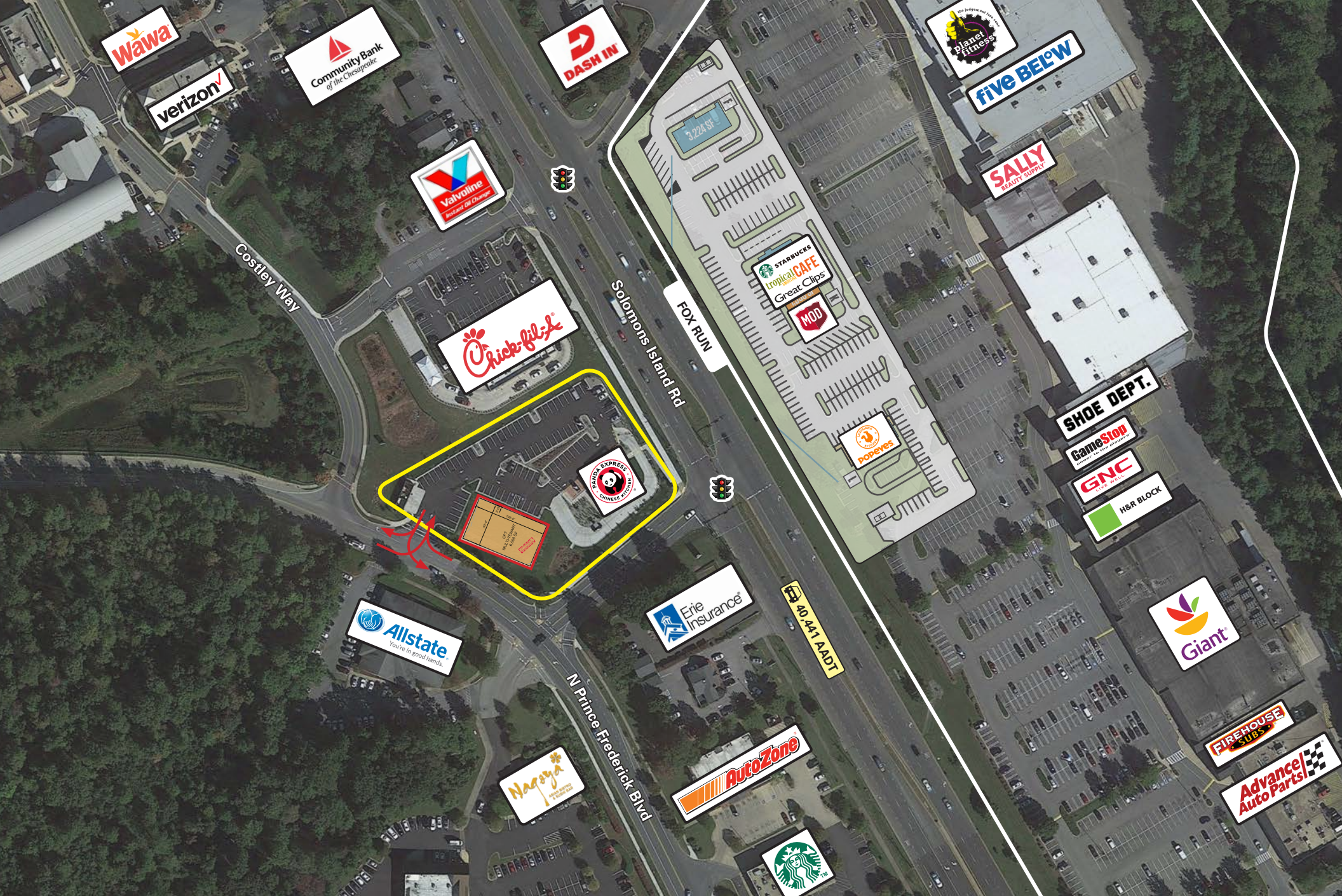
WEST ELEVATION

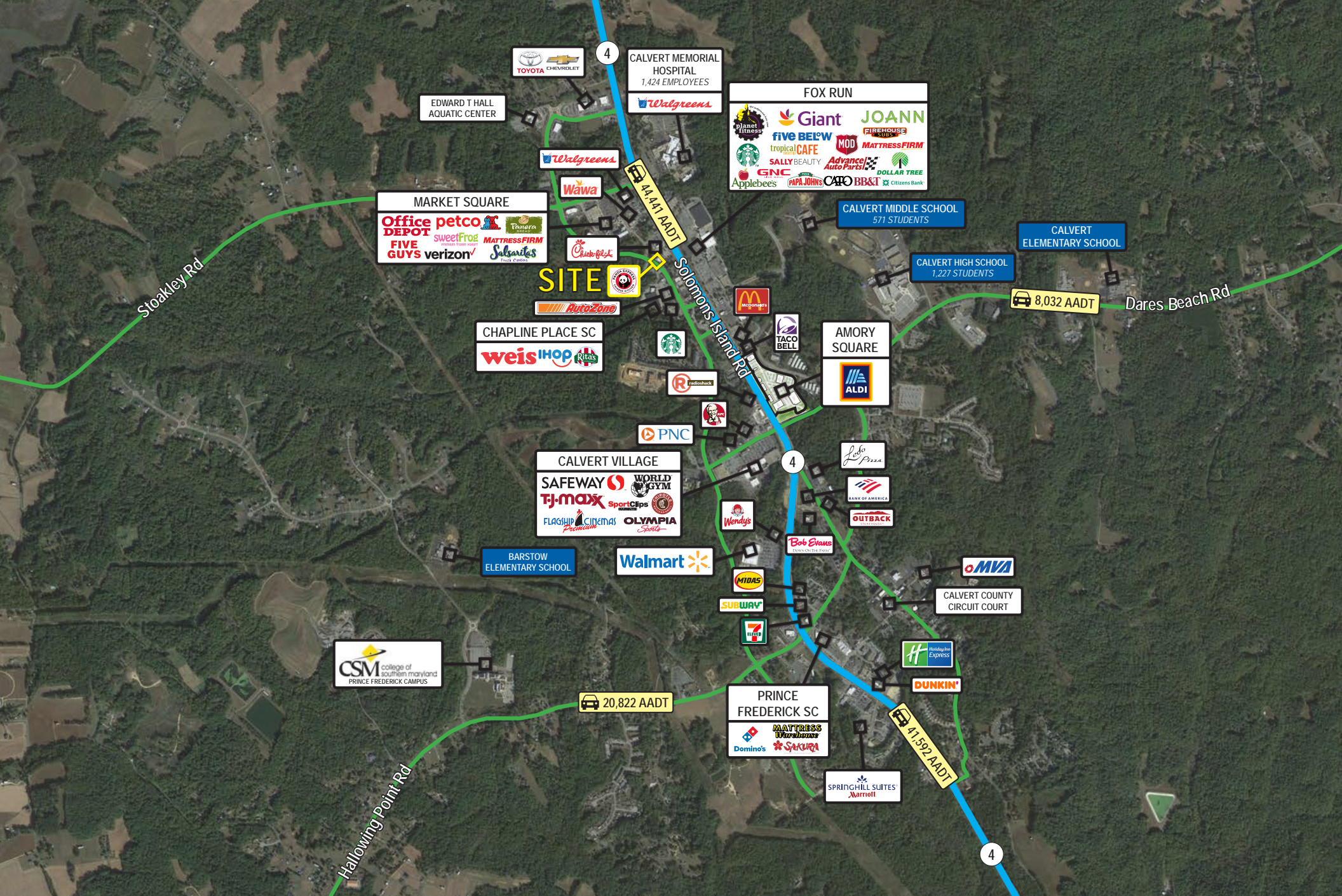


EAST ELEVATION



NORTH ELEVATION





Interested? Contact:

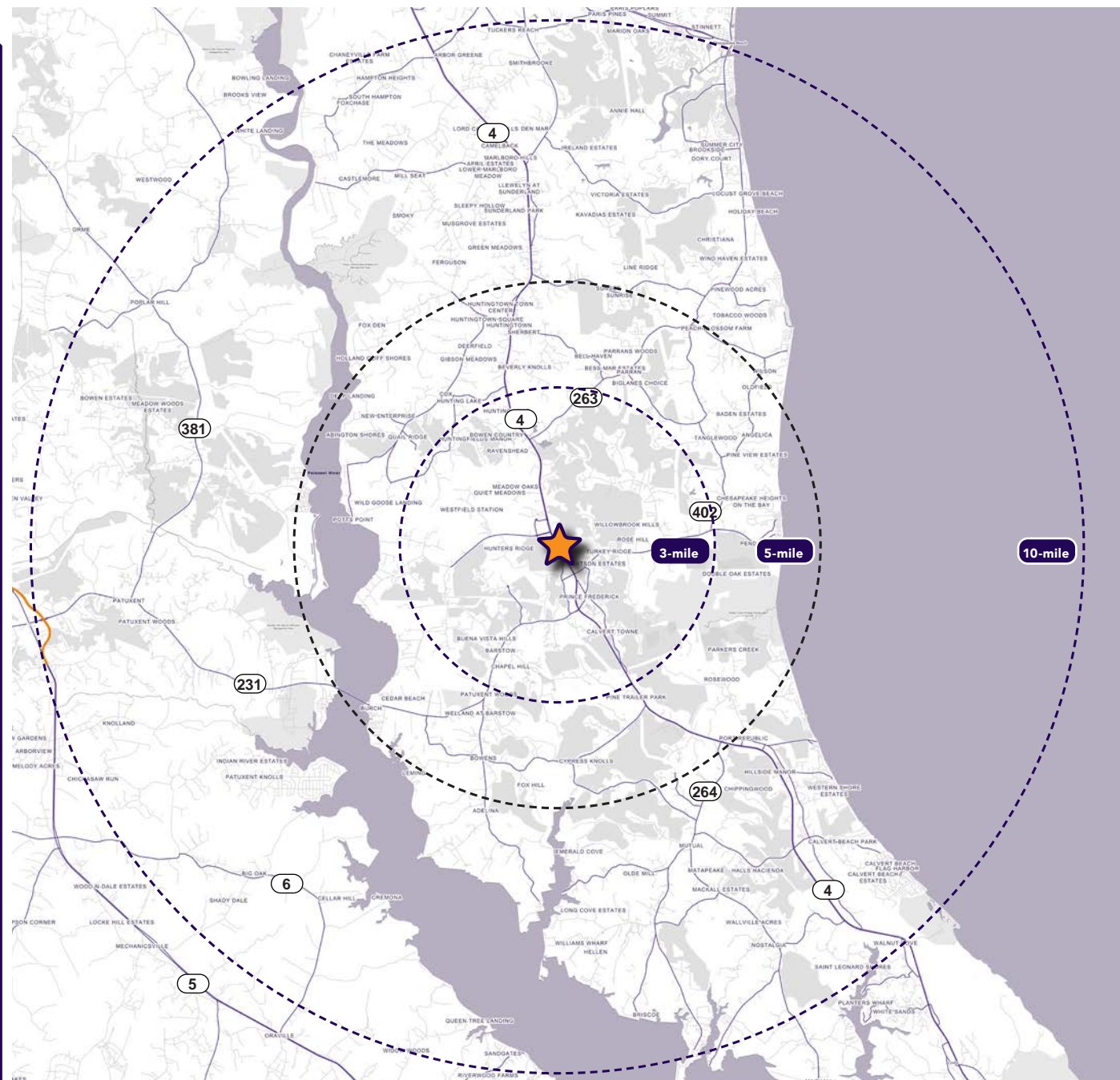
Jonathan Garritt

✉ jgarritt@segallgroup.com

☎ 410.753.3942

📞 443.223.0662

cft
NV Developments, LLC



Maryland

605 South Eden Street, Ste 200
Baltimore, MD 21231
410.753.3000

DC • Virginia

7900 Westpark Drive, Ste 560
McLean, VA 22102
202.833.3830

Online

www.segallgroup.com
Member of
REALTY
RESOURCES

segall
GROUP