

FOR LEASE Available Immediately



Eastpoint Center

7930-7938 Eastern Avenue / Baltimore, MD 21224

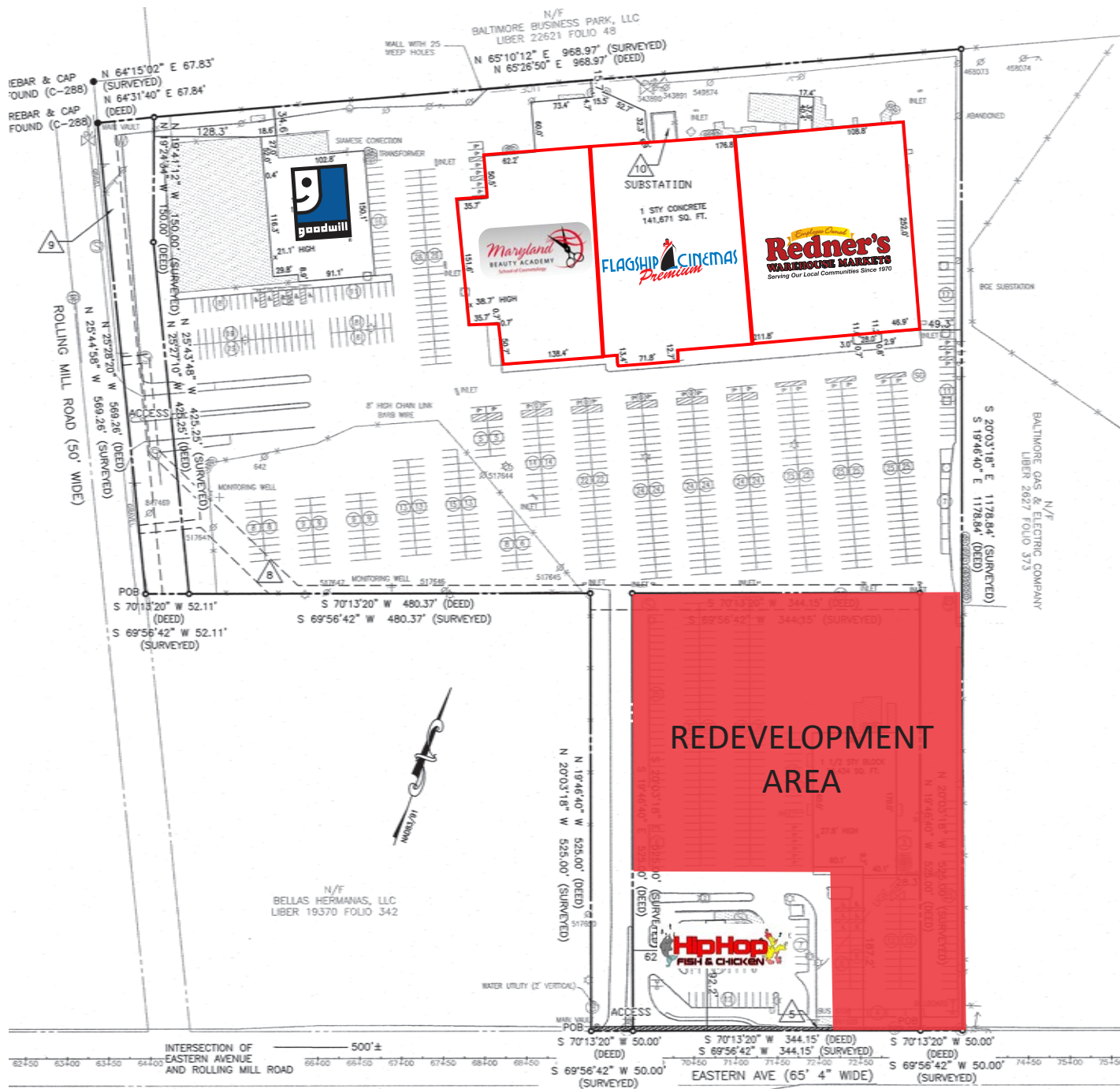
Overview

New retail proposed at this Redner's Market-anchored shopping center in Essex, MD. Direct visibility and access from Eastern Avenue (29,000+ AADT). Possibilities include potential pad site(s) and/or multi-tenant retail. Eastpoint Mall and the Baltimore Beltway (I-695) are immediately adjacent.

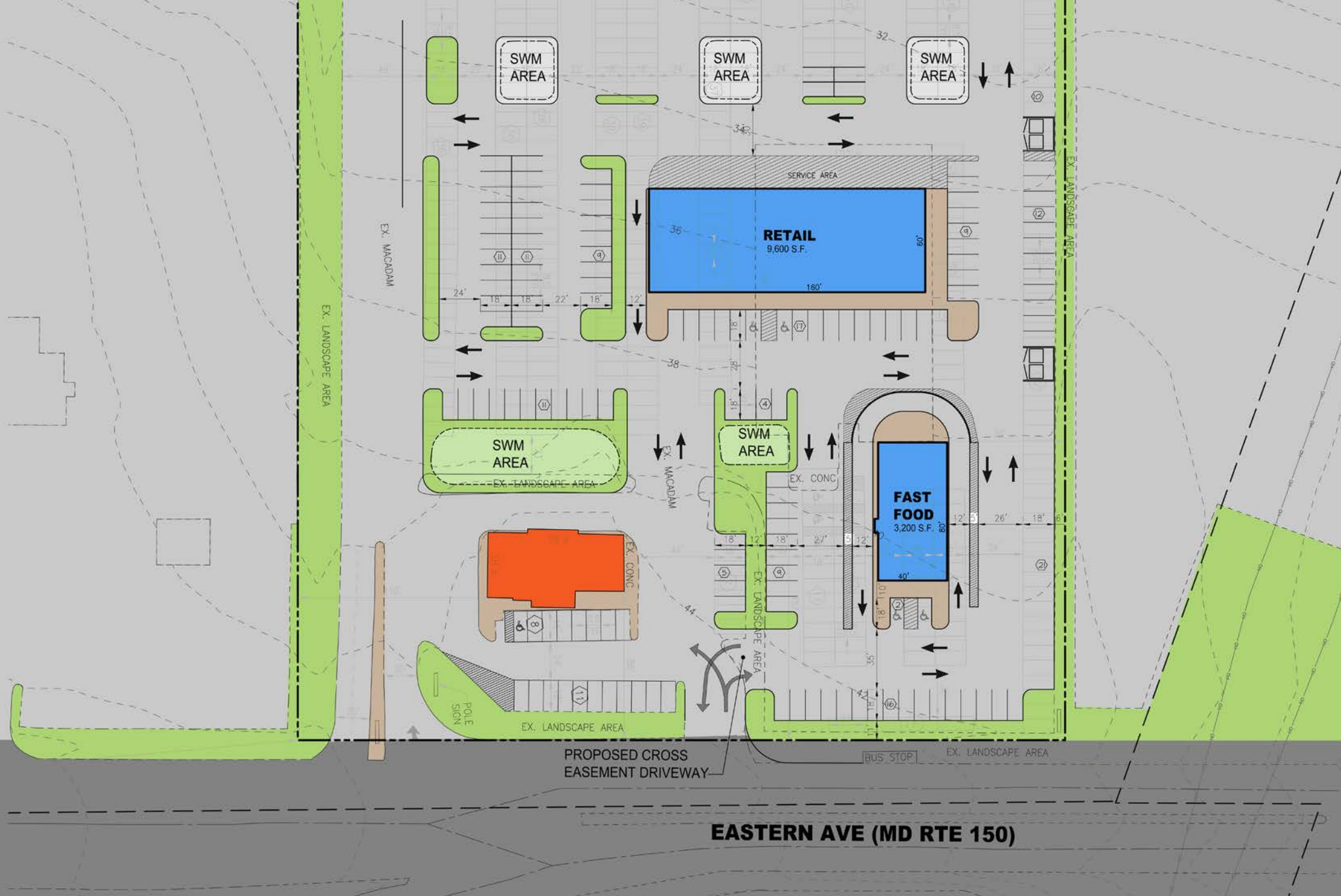
Quick Facts

Availability	Immediate
Size	±1,600 - 13,600 square feet; Out Lot Development Pad
Rental Rate	\$20.00 per square foot, NNN (New Multitenant Retail) \$75,000 per year (Out Lot Pad Ground Lease)
Zoning	BM AS

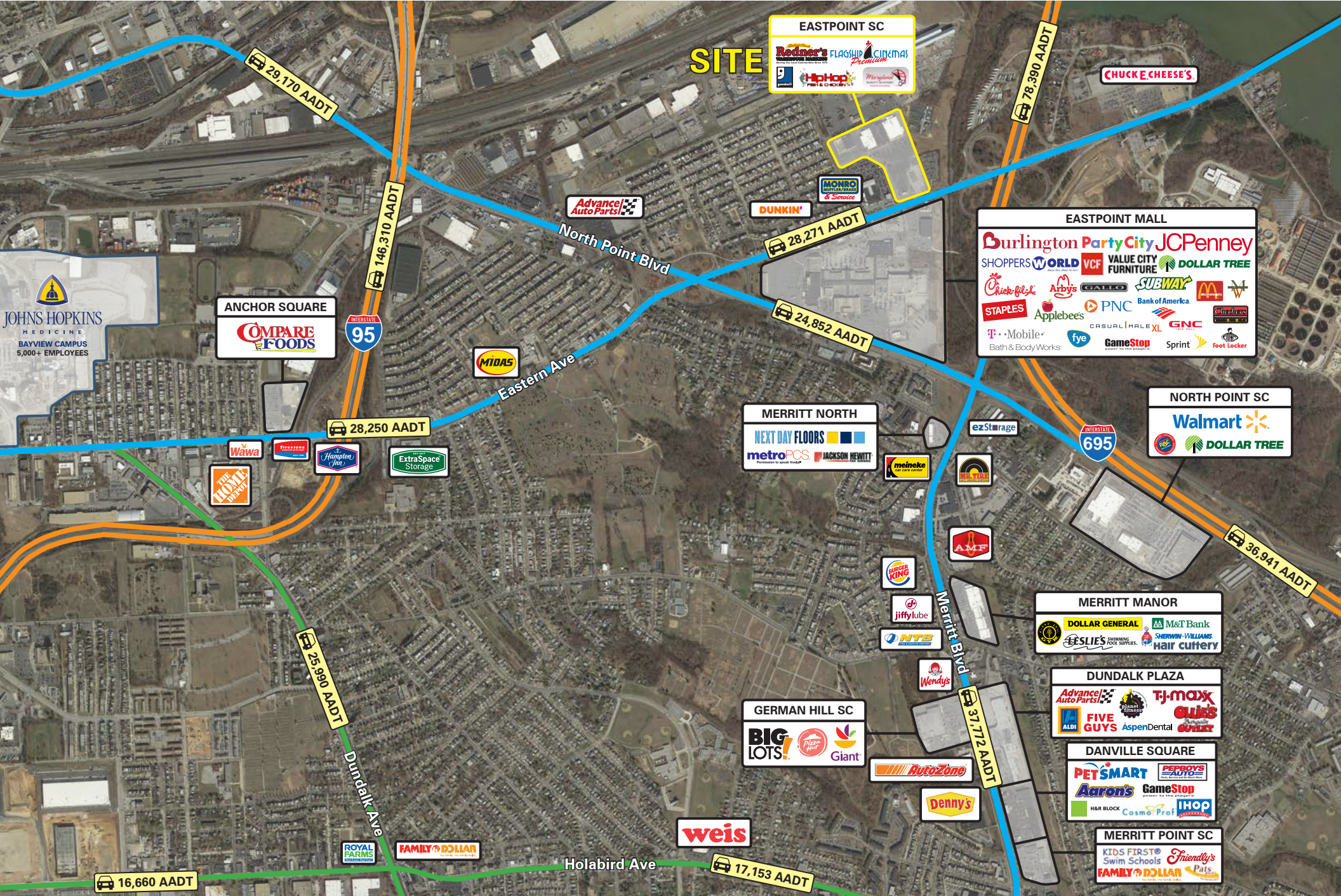
2020 Demographics	1 mile	3 miles	5 miles
POPULATION	7,524	112,443	340,916
HOUSEHOLDS	2,675	43,289	132,676
AVG. HH INCOME	\$65,952	\$67,330	\$79,051
DAYTIME POPULATION	7,307	104,958	321,082
TRAFFIC COUNTS	29,801 AADT (Eastern Avenue)	7,151 AADT (Rolling Mill Road)	












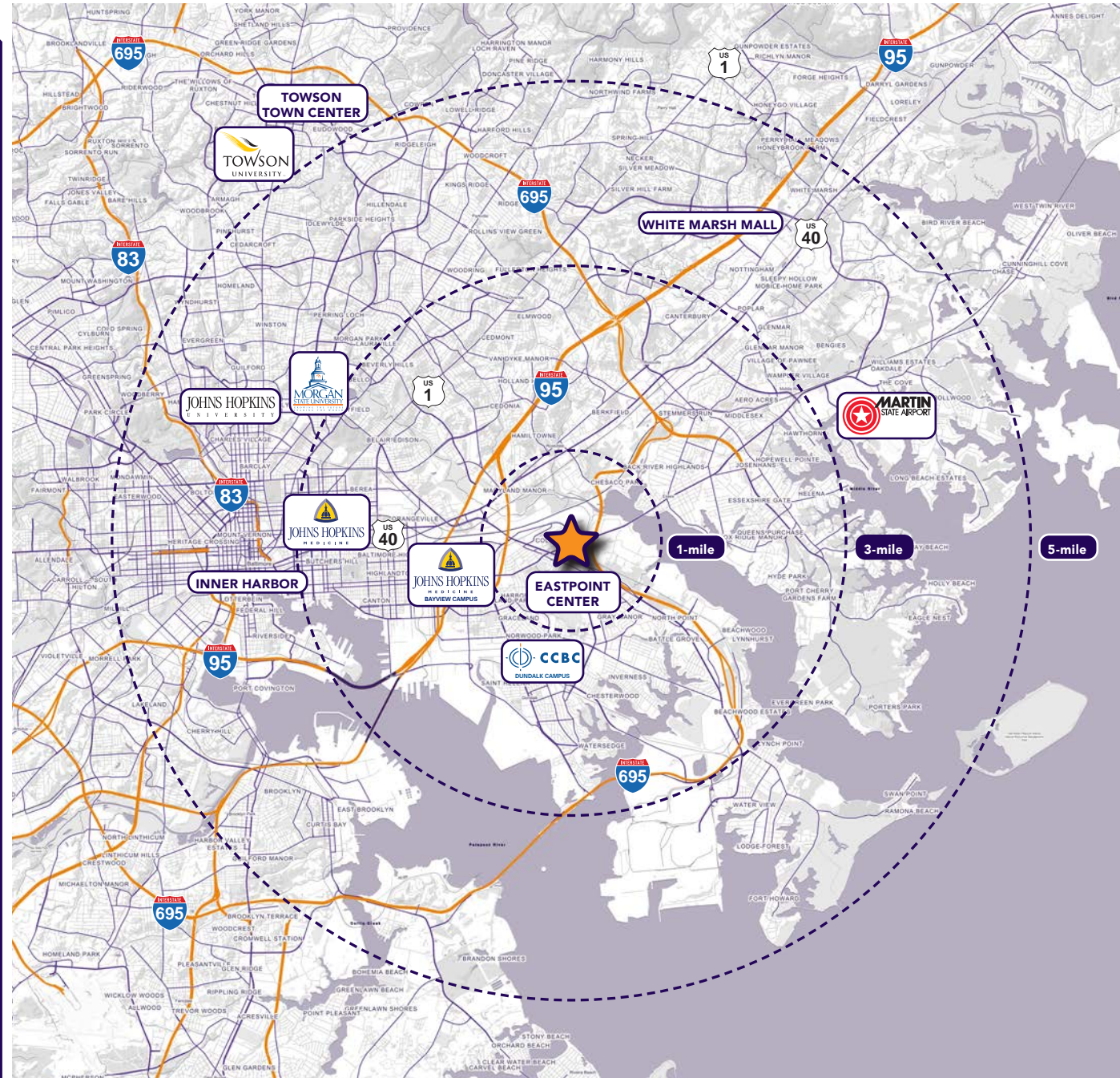
Interested? Contact:

Andrew Segall

 asegall@segallgroup.com

 410.753.3947

 410.960.0361



Maryland

605 South Eden Street, Ste 200
Baltimore, MD 21231
410.753.3000

DC • Virginia

1600 Wilson Boulevard, Ste 930
Arlington, VA 22209
202.833.3830

Online

www.segallgroup.com

Member of
REALTY
RESOURCES