

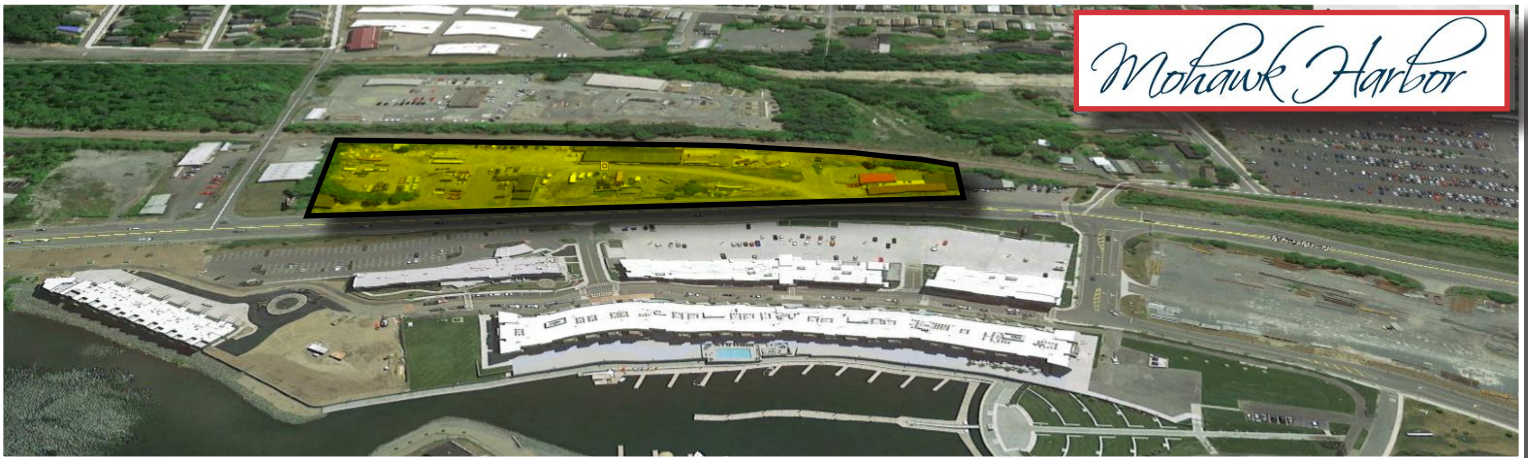
# NAI Platform

**For Lease** | Highly Visible  
Real Estate for Retail Use  
**\$5,000/month/acre + All Nets**



## 1710 Erie Blvd, Schenectady, NY

High traffic counts and outstanding visibility on Erie Blvd across from Mohawk Harbor. This offer of \$60k per year is per acre. Great location for retail, bank, restaurant.



*Mohawk Harbor*



### Peter Korunkewich

Associate Broker

c: 518 331 4424

o: 518 465 1400 ext. 211

[peterk@naiplatform.com](mailto:peterk@naiplatform.com)



### Daniel O'Brien

Associate Broker

c: 518 527 5990

o: 518 465 1400 ext. 224

[dobrien@naiplatform.com](mailto:dobrien@naiplatform.com)

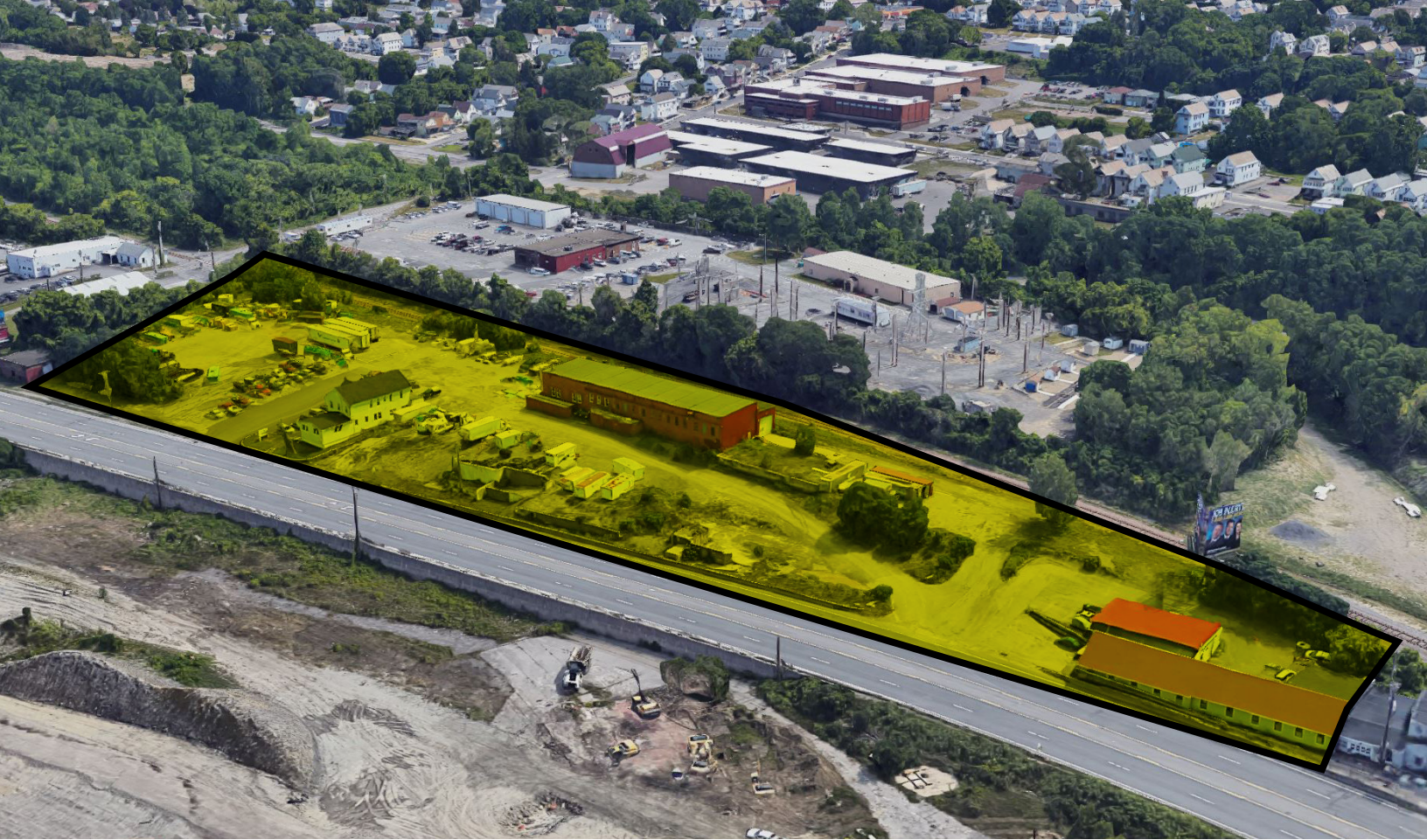
14 Corporate Woods Boulevard, Suite 100

Albany, New York 12211

+1 518 465 1400

[naiplatform.com](http://naiplatform.com)

The information contained herein has been given to us by the owner of the property or by other sources we deem reliable; we have no reason to doubt its accuracy, but we do not guarantee it. All information should be verified prior to purchase or lease.



## 1710 Erie Blvd, Schenectady, NY



### Building Information

Total SF:	±15,424 SF
Office SF:	± 2,000 SF
Retail SF:	±10,000 SF
Warehouse SF:	±13,424 SF
Zoning:	Commercial
Acres:	3.56
Parking:	60 Private
Ceiling Height:	8 ft.
Water:	Municipal
Sewer:	Yes
Construction:	Wooden Frame
Roof:	TBD
Condition:	Good

### Directions

I-890 to Erie Blvd Exit, follow Erie through round about at Rivers Casino property on the right across from Marriott

# Mohawk Harbor



	<b>RIVER HOUSE</b>	<b>COURTYARD®</b> <b>Marriott</b> Schenectady at Mohawk Harbor
	<b>DUKES</b> CHOPHOUSE	
	<b>CAPITAL BANK</b> A division of Chemung Canal Trust Company	
		
		<b>VILLA ITALIA</b> Pasticceria

# NAI Platform

14 Corporate Woods Boulevard, Suite 100  
Albany, New York 12211  
+1 518 465 1400  
naiplatform.com

Our professionals possess extensive knowledge and experience of the industry's intricate nuances, helping our clients surpass their goals. We deliver a range of diversified services at an unparalleled value.

# NAI Platform

14 Corporate Woods Boulevard Suite 100  
Albany, New York USA 12211  
+1 518 465 1400

[naiplatform.com](http://naiplatform.com)