



6400 Office Square

6400-6434 E Main St, Reynoldsburg, Ohio 43068

Property Features

- Located in 6400 Office Square Park
- 2 Office Suites Available
- Mix of Private & Open Office Space
- Full Service Gross Lease, Including Janitorial & Utilities
- Ample Parking
- 37,000± VPD Traveling on East Main St.
- Located Near the Intersection of East Main & Brice Rd.
- Easy Access to I-270

Lease Rate: \$12.00 SF/Yr (Full Service Gross)



For more information:

Conor David

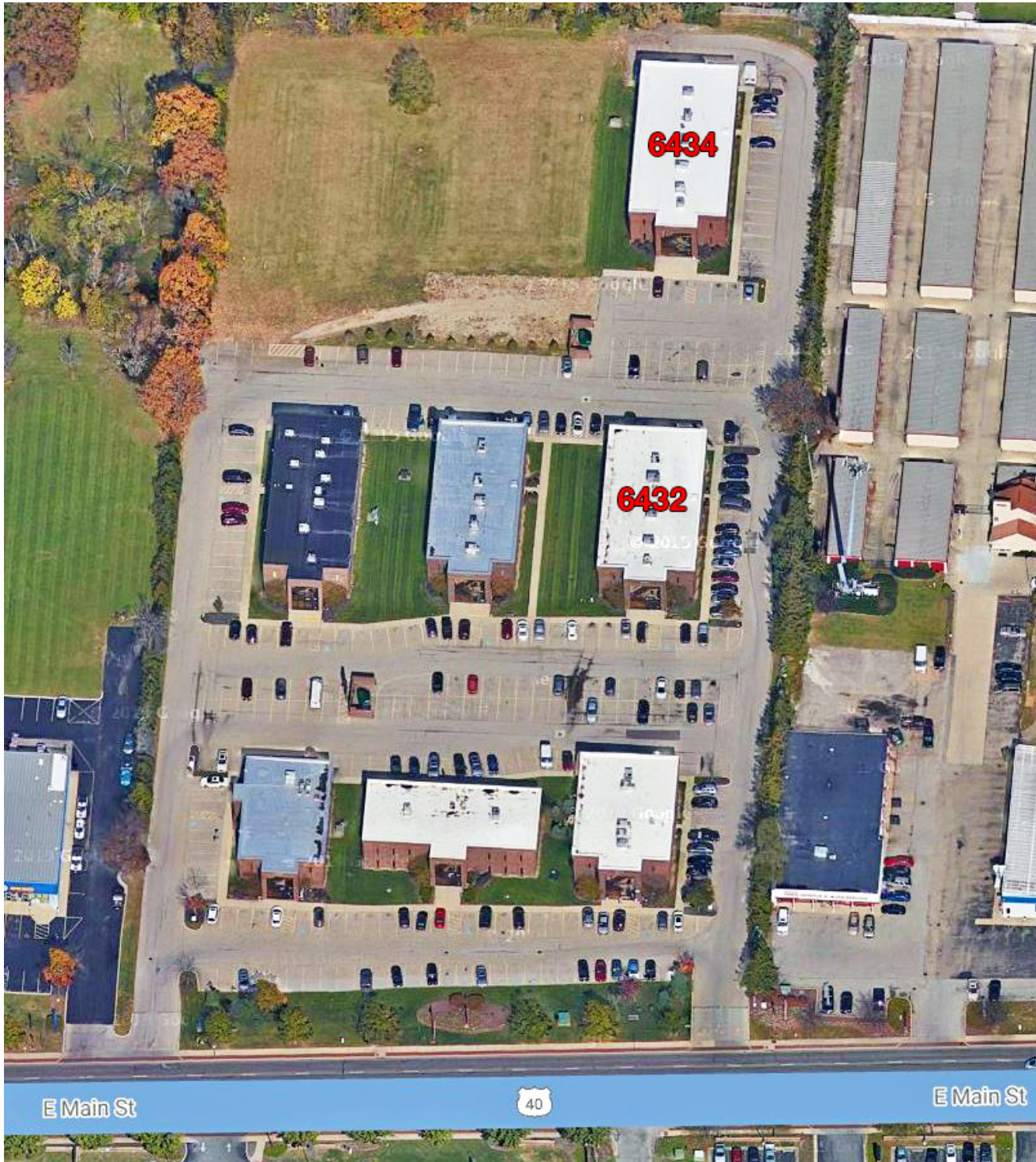
614 629 5298 • cdavid@ohioequities.com

Tyler Watkins

614 629 5232 • twatkins@ohioequities.com

Carter Stephens

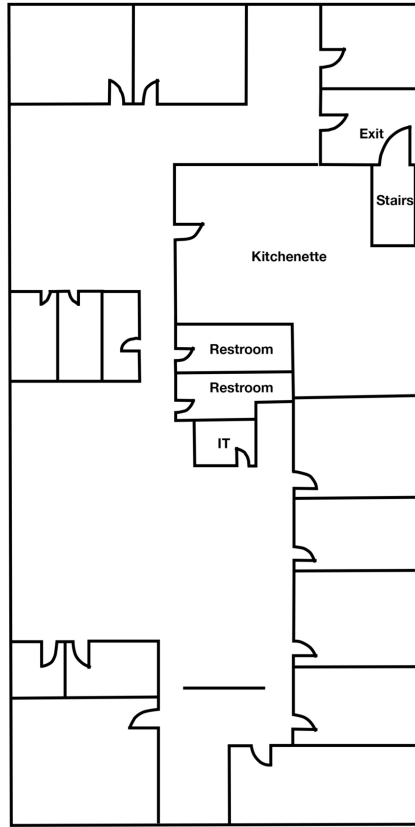
614 629 5261 • cstephens@ohioequities.com





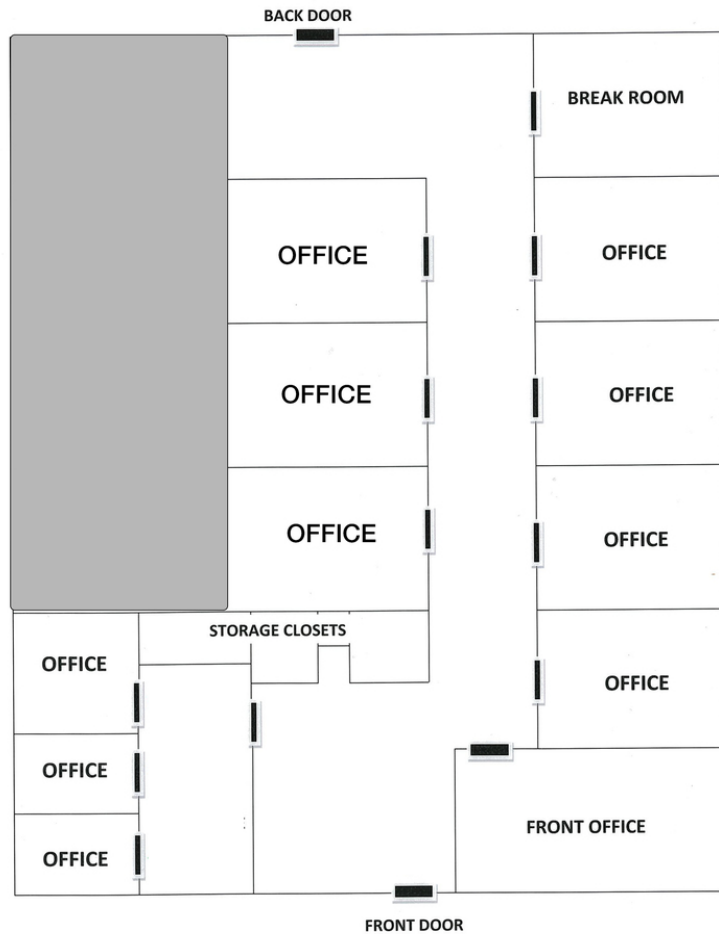


6432 E. Main Street
Suite 201



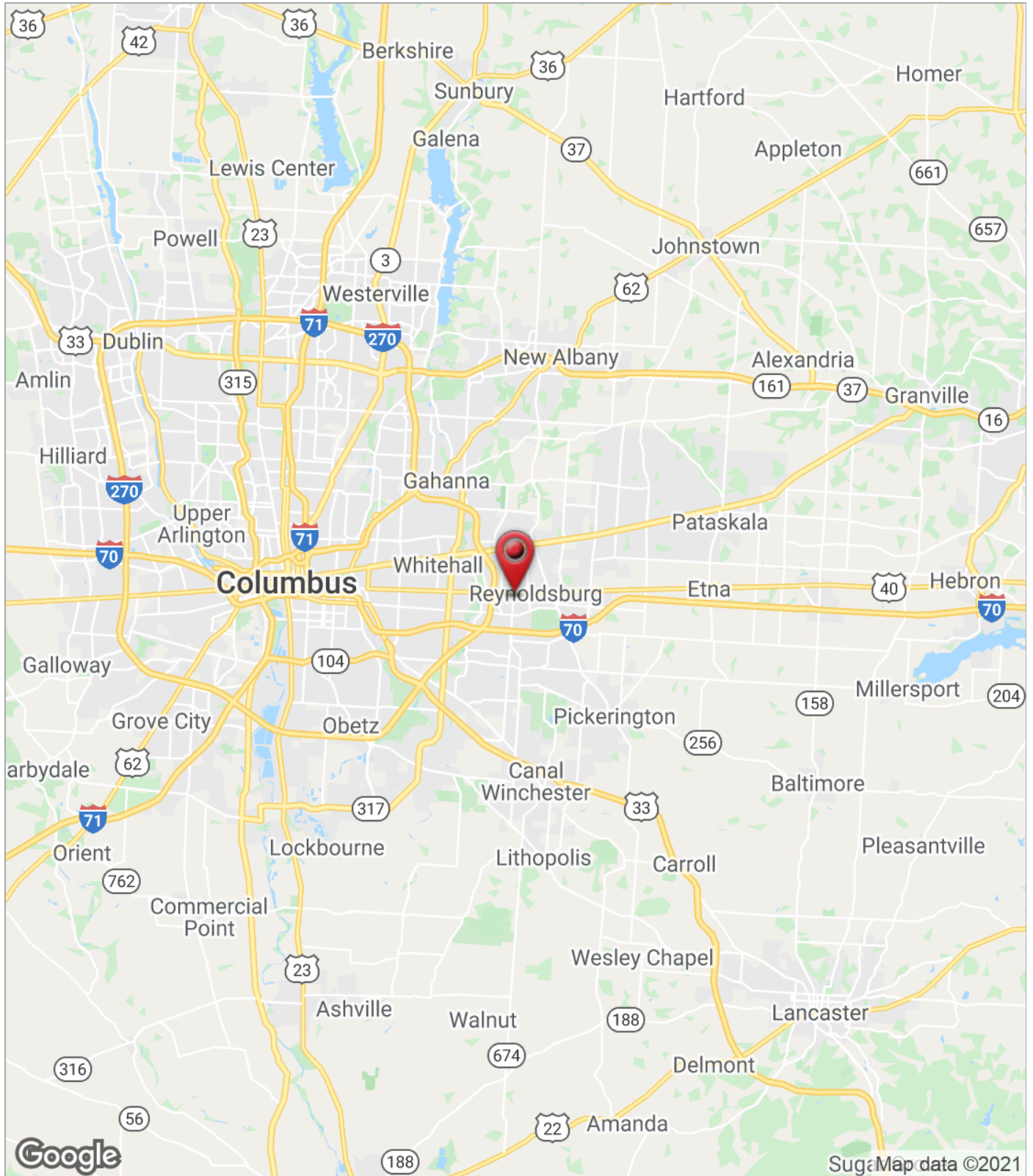
SPACE	SUITE #	SPACE USE	LEASE RATE	LEASE TYPE	SIZE (SF)	AVAILABILITY
6432 E Main St - Suite 201	201	Office Building	\$12.00 SF/YR	Gross	6,400 SF	VACANT

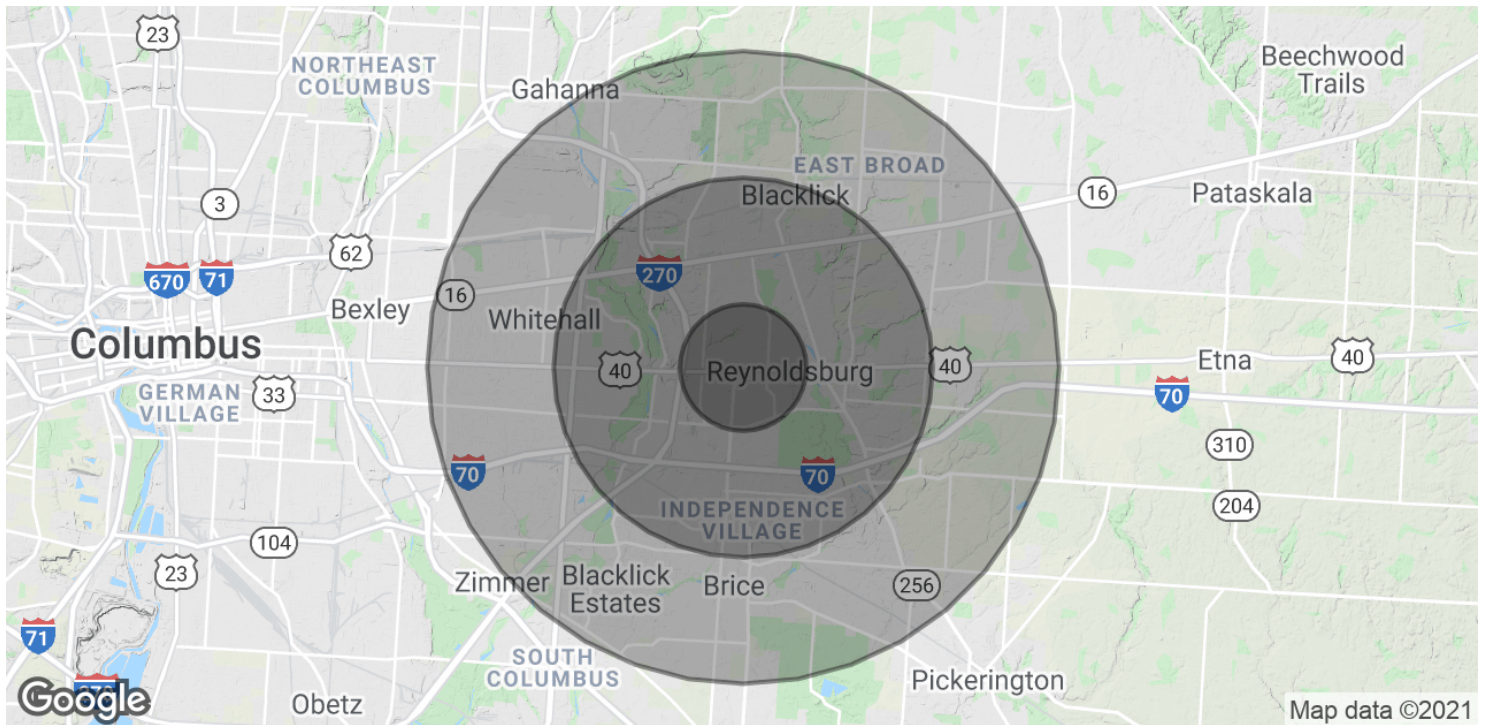




BUILDING	SUITE	LEASE RATE	LEASE TYPE	SIZE (SF)	AVAILABILITY
6434 E Main St.	101	\$12.00 SF/YR	Full Service Gross	3,093 SF	IMMEDIATE







POPULATION

	1 MILE	3 MILES	5 MILES
Total Population	13,302	96,327	213,859
Average age	36.4	34.5	34.3
Average age (Male)	35.1	32.7	33.1
Average age (Female)	38.5	36.0	35.5

HOUSEHOLDS & INCOME

	1 MILE	3 MILES	5 MILES
Total households	5,478	39,269	85,263
# of persons per HH	2.4	2.5	2.5
Average HH income	\$56,225	\$58,187	\$60,086
Average house value	\$122,118	\$147,262	\$159,406

* Demographic data derived from 2010 US Census