

# The New Look Pointe Business Plaza

±865 - ±4,296 SF Office Suites

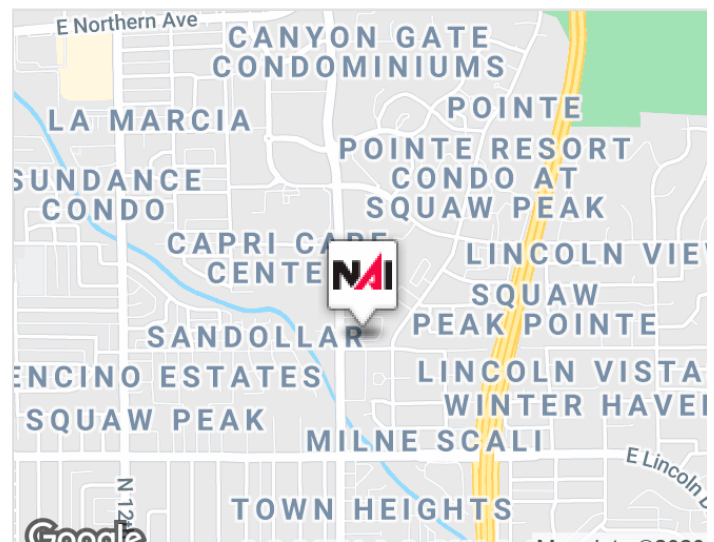


## 7227 N 16th Street

Phoenix, Arizona 85020

### Property Features

- Suites ranging from ±865 to ±4,296 SF
- Building/property remodel
- Mountain views
- Easily accessible to SR-51
- 10 minutes to Sky Harbor
- Centrally located
- 5 minutes to Camelback Corridor
- 5:1,000 parking, covered available
- Move-in ready suites
- On-site maintenance office



Demographics	1 Mile	3 Miles	5 Miles
Average Age:	43.0	41.5	38.2
Population:	16,546	111,484	372,413
Average HH Income	\$98,748	\$98,205	\$81,302
Daytime Emp. Pop.	9,893	70,575	195,650

**For Lease: \$19.00/SF  
(Full Service)**

**Kevin Higgins**  
602 393 6605  
kevin.higgins@naihorizon.com

2944 N 44th St, Suite 200  
Phoenix, AZ 85018  
+1 602 955 4000

[naihorizon.com](http://naihorizon.com)

# Available Spaces

## The New Look Pointe Business Plaza



FLOOR	SUITE #	LEASE RATE	LEASE TYPE	SIZE (SF)	AVAILABILITY
1st Floor	100	\$19.00 SF/YR	Full Service	3,431 SF	Immediately
1st Floor	105	\$19.00 SF/YR	Full Service	865 SF	Immediately
1st Floor	100 & 105	\$19.00 SF/YR	Full Service	4,296 SF	Immediately
2nd Floor	225	\$19.00 SF/YR	Full Service	2,175 SF	Immediately

For Lease

# Property Photos

## The New Look Pointe Business Plaza

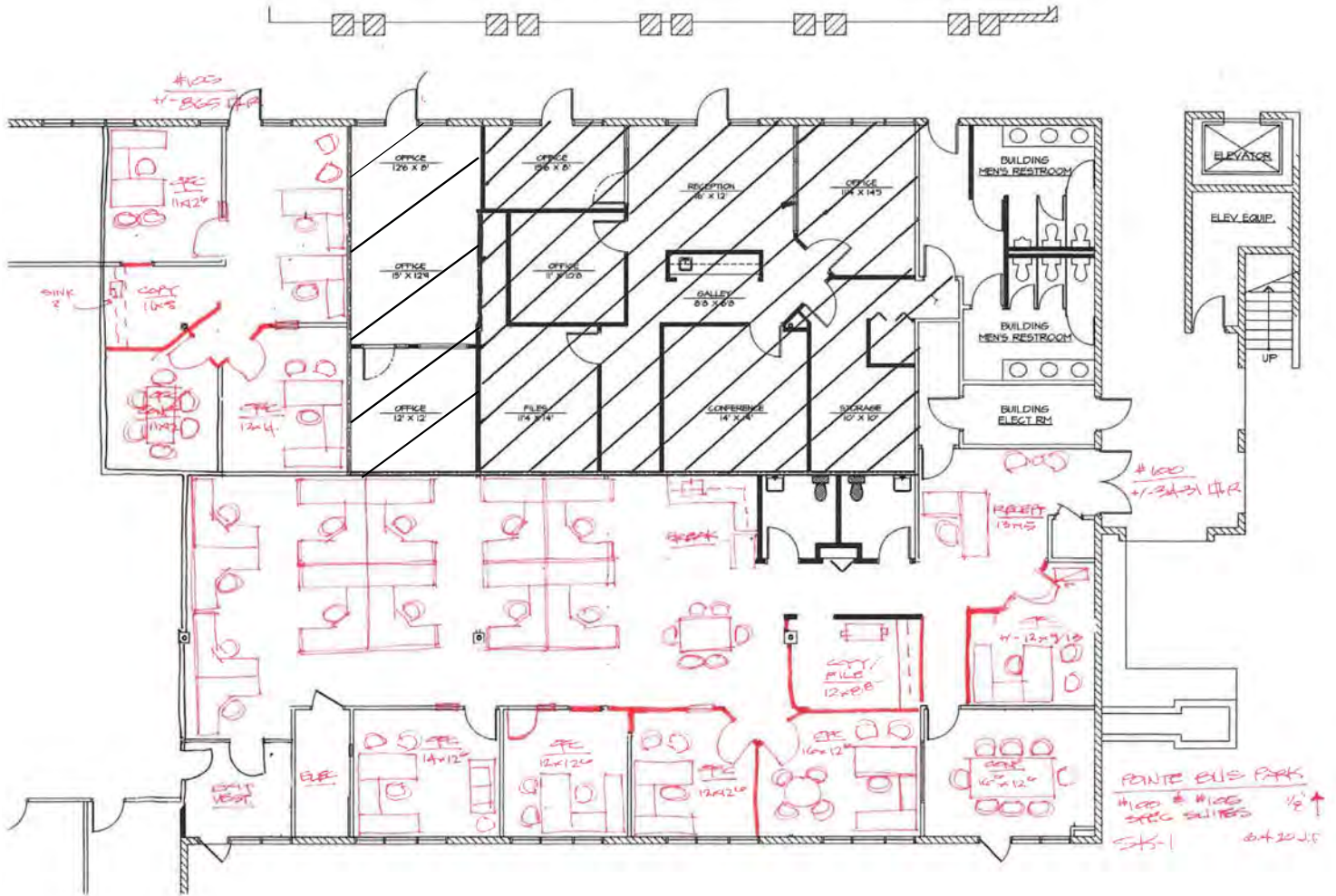


Kevin Higgins  
602 393 6605  
kevin.higgins@naihonorizon.com

**NAI**Horizon

# Floor Plan

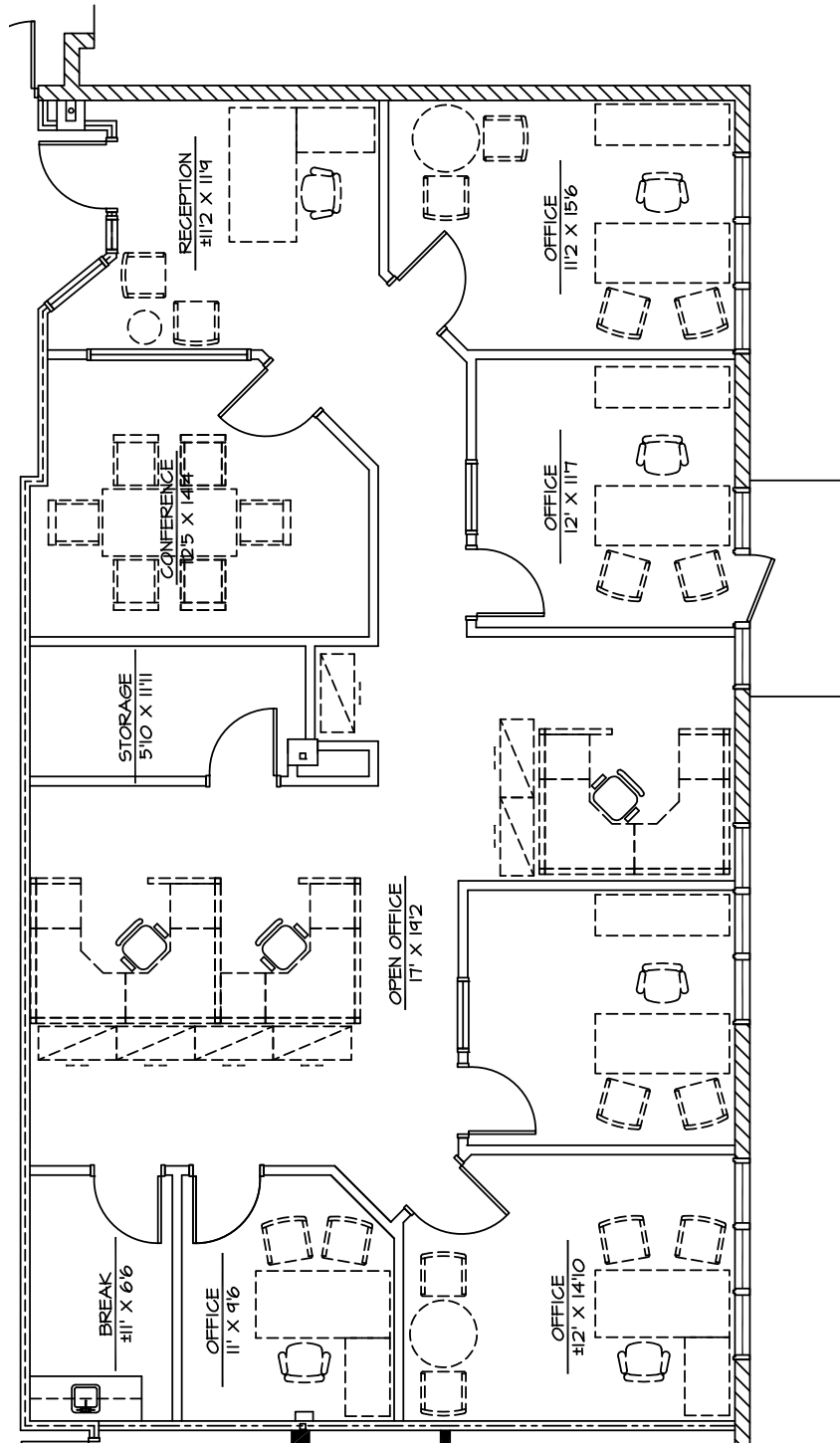
## The New Look Pointe Business Plaza



Suite 100 & 105 | ±4,296 SF

# Floor Plan

## The New Look Pointe Business Plaza



Suite 225 | ±2,175 SF

# Site Plan

## The New Look Pointe Business Plaza

