



5110 E Southern Ave

Mesa, Arizona 85206

Property Features

- 1,060 SF available
- Excellent visibility
- Great access
- Located off of US-60
- Monument signage
- Ample parking
- Co-tenants include: Primary care office, Casa Reynoso Mexican Restaurant, Chiropractor, Medicare Health Plan & Quiznos



Traffic Counts

	VPD
E Southern Ave	19,732
S Higley Rd	43,659

For Lease: Call for pricing

Horth Hong

+1 602 393 6782

horth.hong@naihorizon.com

2944 N 44th St, 200

Phoenix, AZ 85018

+1 602 955 4000

naihorizon.com

NO WARRANTY OR REPRESENTATION, EXPRESS OR IMPLIED, IS MADE AS TO THE ACCURACY OF THE INFORMATION CONTAINED HEREIN, AND THE SAME IS SUBMITTED SUBJECT TO ERRORS, OMISSIONS, CHANGE OF PRICE, RENTAL OR OTHER CONDITIONS, PRIOR SALE, LEASE OR FINANCING, OR WITHDRAWAL WITHOUT NOTICE, AND OF ANY SPECIAL LISTING CONDITIONS IMPOSED BY OUR PRINCIPALS NO WARRANTIES OR REPRESENTATIONS ARE MADE AS TO THE CONDITION OF THE PROPERTY OR ANY HAZARDS CONTAINED THEREIN ARE ANY TO BE IMPLIED.

For Lease

Southern Promenade

Additional Photos



Monument Signage



Casa Reynoso



Suite 111 - Between Chiropractor & Quiznos

For Lease

Southern Promenade

Suite

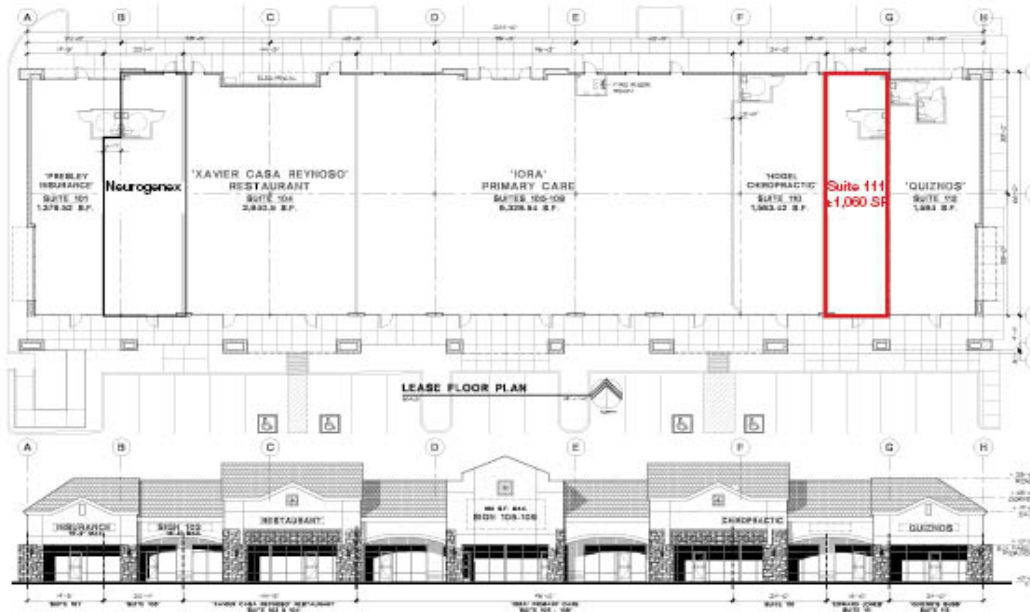
111 Interior



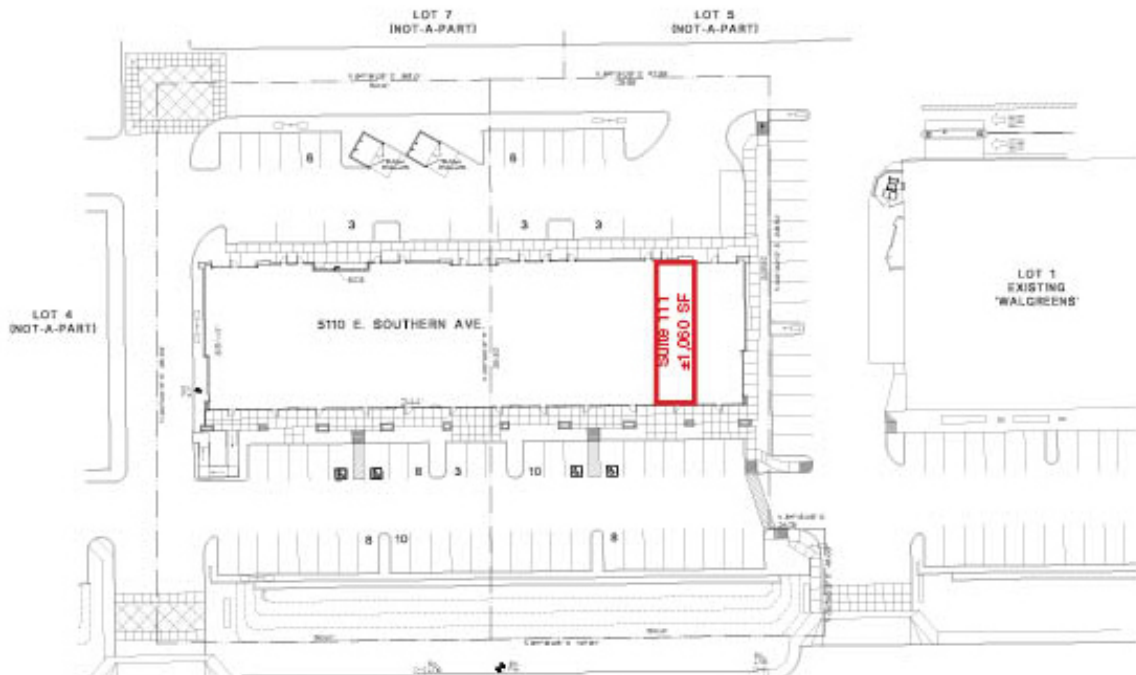
For Lease

Southern Promenade

Site Plans



Lease Plan



Site Plan

For Lease

Southern Promenade

Demographics

Map & Report



POPULATION

	1 MILE	3 MILES	5 MILES
Total Population	14,299	50,710	125,029
Average age	43.10	45.60	42.60
Average age (Male)	40.60	43.20	40.60
Average age (Female)	45.30	47.60	44.30

HOUSEHOLDS & INCOME

	1 MILE	3 MILES	5 MILES
Total households	5,587	47,180	111,157
# of persons per HH	2.2	2.2	2.4
Average HH income	\$67,440	\$69,659	\$74,407
Average house value	\$264,118	\$198,521	\$216,232

ETHNICITY (%)

	1 MILE	3 MILES	5 MILES
Hispanic	14.2%	14.4%	15.8%