



164 Lincoln Highway

Fairless Hills, Falls Township | Bucks County, PA

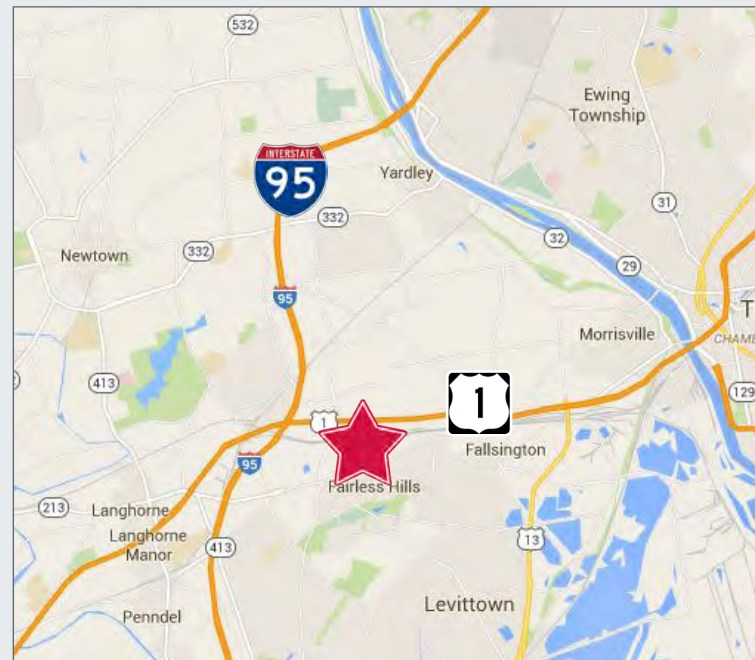
Property Description

- Professional/Medical offices available for Lease in the Oxford Office Campus. Two-story, elevator served, multi-tenanted office building.
- Building Size: 9,415± SF
- Available space:
Suite 203 1,270 SF **Suite 201** 1,245 SF
- Zoning: HC, Highway Commercial; full zoning code available upon request
- Parking: 50± spots
- Close to shopping, restaurants, banks, hotels, the Oxford Valley Mall and Sesame Place via Business Route 1/Lincoln Highway

Location Information

- Located on highly traveled Lincoln Highway
- ½ mile from Oxford Valley Mall and Aria Health-Bucks County
- 5 minutes from Interstate 95 and US Route 1

Lease Rate: Negotiable



For more information:

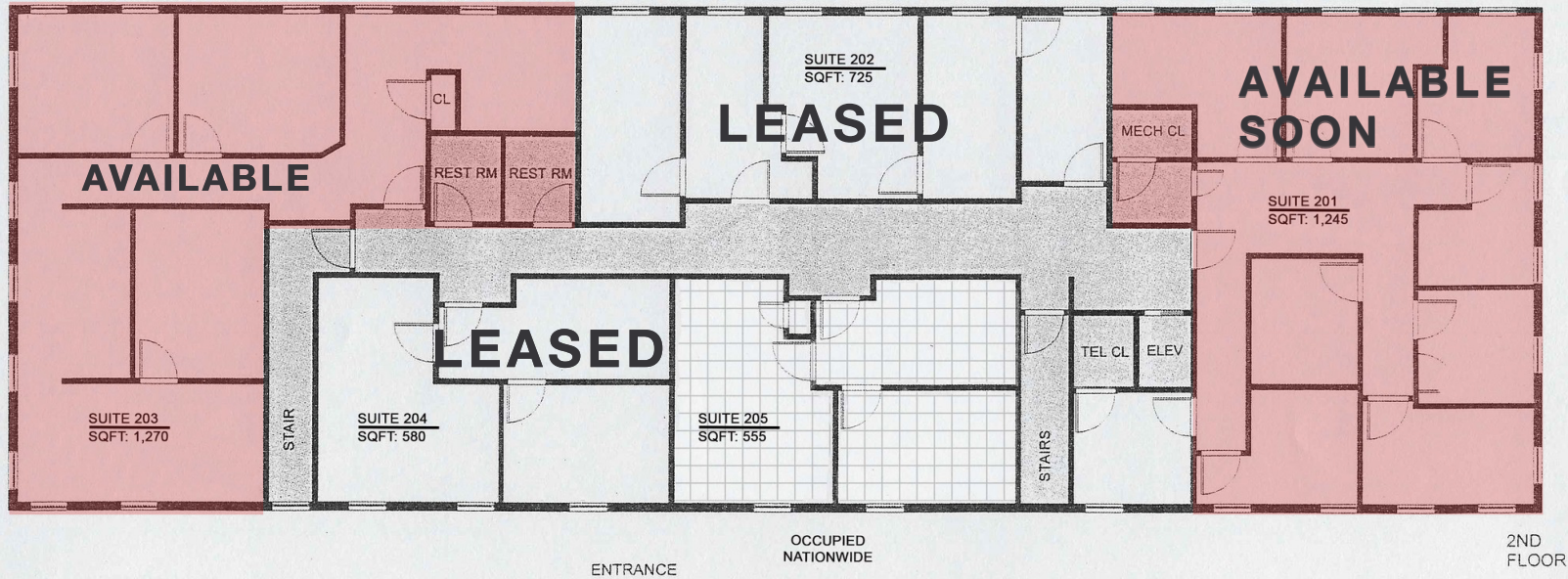
Zena Charokopos Vice President

215 396 2900 x103 • zena.charokopos@naimertz.com

First Floor Fully Leased



Second Floor 1,835 SF Available



For more information:

Zena Charokopos Vice President
215 396 2900 x103 • zena.charokopos@naimertz.com

NO WARRANTY OR REPRESENTATION, EXPRESS OR IMPLIED, IS MADE AS TO THE ACCURACY OF THE INFORMATION CONTAINED HEREIN, AND THE SAME IS SUBMITTED SUBJECT TO ERRORS, OMISSIONS, CHANGE OF PRICE, RENTAL OR OTHER CONDITIONS, PRIOR SALE, LEASE OR FINANCING, OR WITHDRAWAL WITHOUT NOTICE, AND OF ANY SPECIAL LISTING CONDITIONS IMPOSED BY OUR PRINCIPALS NO WARRANTIES OR REPRESENTATIONS ARE MADE AS TO THE CONDITION OF THE PROPERTY OR ANY HAZARDS CONTAINED THEREIN ARE ANY TO BE IMPLIED.

1105 Industrial Highway
Southampton PA 18966
+1 215 396 2900

naimertz.com

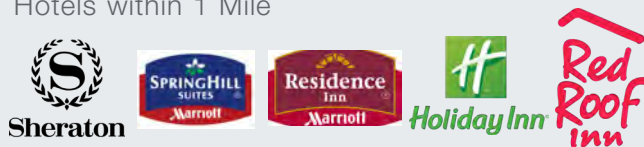


Nearby Amenities

- Retail & Restaurants within 1 Mile



- Hotels within 1 Mile



For more information:

Zena Charokopos Vice President

215 396 2900 x103 • zena.charokopos@naimertz.com