

**5,117**  
**SQUARE FEET**

**INDUSTRIAL / FLEX**  
**AVAILABLE**  
**FOR LEASE**

**IDEAL LOCATION**  
**MINUTES FROM**  
**I-295 & EXIT 4**  
**OF THE NJ TURNPIKE**



**CLICK HERE FOR A  
VIRTUAL TOUR**

**OWNED BY**

**Camber  
Real Estate  
Partners**

**AVAILABLE FOR LEASE**

**102 GAITHER DRIVE**

**EAST GATE BUSINESS CENTER | Mount Laurel, NJ**

**Scott Mertz, SIOR**  
+1 856 802 6529  
scott.mertz@naimertz.com

**NAI Mertz**  
21 Roland Avenue | Mount Laurel, NJ 08054  
+1 856 234 9600 | naimertz.com

**NAI Mertz**  
COMMERCIAL REAL ESTATE SERVICES, WORLDWIDE

**How & Where May We Help You?**

AVAILABLE FOR LEASE

# 102 GAITHER DRIVE

EAST GATE BUSINESS CENTER | Mount Laurel, NJ

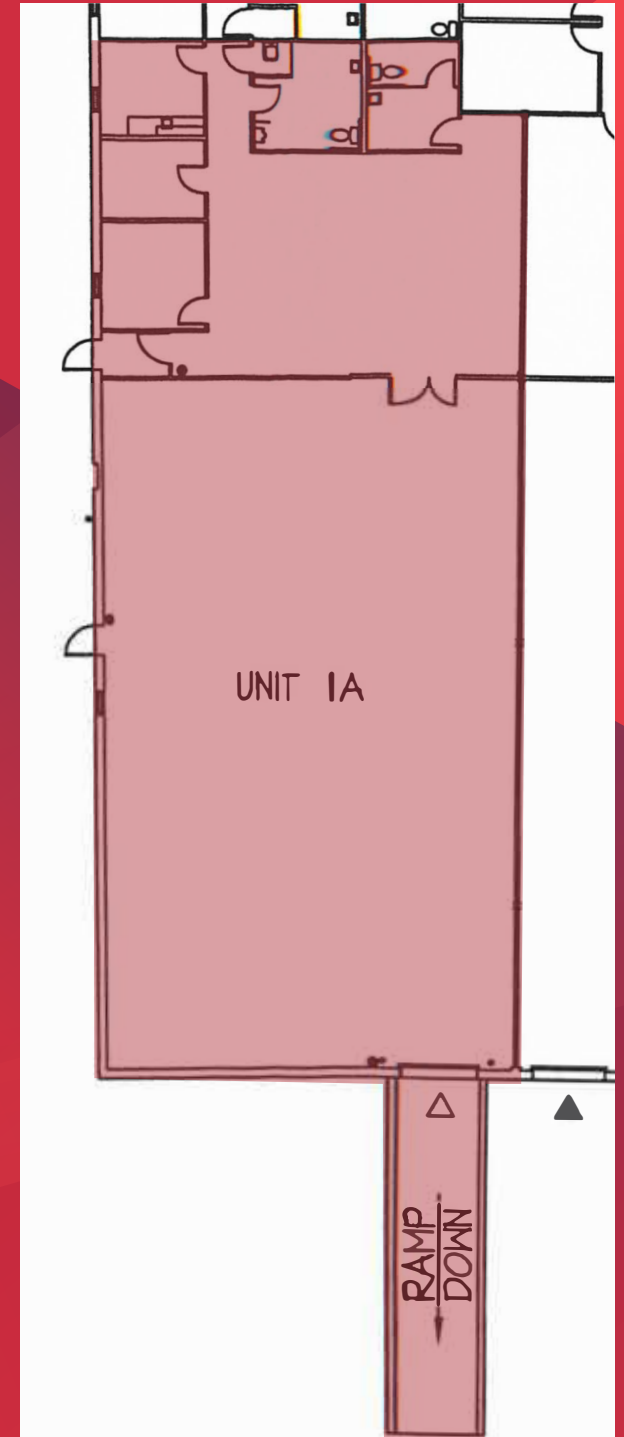
## CURRENT AVAILABILITIES

### UNIT 1A [CLICK HERE FOR VIRTUAL TOUR](#)

- 5,117 SF
- 18' clear ceiling height
- 1 drive-in door
- Air-conditioned office area
  - 5 private offices
  - Bullpen area
  - Kitchenette
  - 4 restrooms

## BUILDING DESCRIPTION

- 32,079 SF industrial/flex building
- 2.76 acre lot
- Tailgate and drive-in loading
- Power: 120/208v; 600a; 3-Phase
- Wet sprinkler system
- Located in East Gate Business Center
- Easy access to NJ Turnpike and I-295





# LOCATION INFORMATION



AVAILABLE FOR LEASE

## 102 GAITHER DRIVE

EAST GATE BUSINESS CENTER | Mount Laurel, NJ

### Distance to

Route 38	1 mi
Route 73	1.5 mi
NJ Turnpike (Exit 4)	2 mi
I-295 (Exit 36 A)	2 mi
Route 70	4.5 mi
Center City Philadelphia	12 mi

OWNED BY

**Camber  
Real Estate  
Partners**

**Scott Mertz, SIOR**

+1 856 802 6529

scott.mertz@naimertz.com

**NAI Mertz**

21 Roland Avenue | Mount Laurel, NJ 08054

+1 856 234 9600 | naimertz.com

NO WARRANTY OR REPRESENTATION, EXPRESS OR IMPLIED, IS MADE AS TO THE ACCURACY OF THE INFORMATION CONTAINED HEREIN, AND THE SAME IS SUBMITTED SUBJECT TO ERRORS, OMISSIONS, CHANGE OF PRICE, RENTAL OR OTHER CONDITIONS, PRIOR SALE, LEASE OR FINANCING, OR WITHDRAWAL WITHOUT NOTICE, AND OF ANY SPECIAL LISTING CONDITIONS IMPOSED BY OUR PRINCIPALS NO WARRANTIES OR REPRESENTATIONS ARE MADE AS TO THE CONDITION OF THE PROPERTY OR ANY HAZARDS CONTAINED THEREIN ARE ANY TO BE IMPLIED.

**NAIMertz**

COMMERCIAL REAL ESTATE SERVICES, WORLDWIDE