



## 1255 S Tyler

Wichita, Kansas 67209

### Property Features

- 1,700 SF available (Suite D)
- 6 offices, reception, bathroom
- Zoned General Commercial
- Signage available facing Kellogg
- Located within a high concentration of retail and restaurant users
- Excellent access and visibility to Kellogg (US Hwy 54) and I-235
- Traffic count: 53,900 vehicles per day on Kellogg & Tyler
- Area users include: Holland Paving, Subway, The Home Depot, Circle K, Mr. Goodcents, MidAmerican Credit Union, Davis Liquor, and Kansas Dept. of Revenue/Driver's License
- Lease rate: \$2,000/month NNN

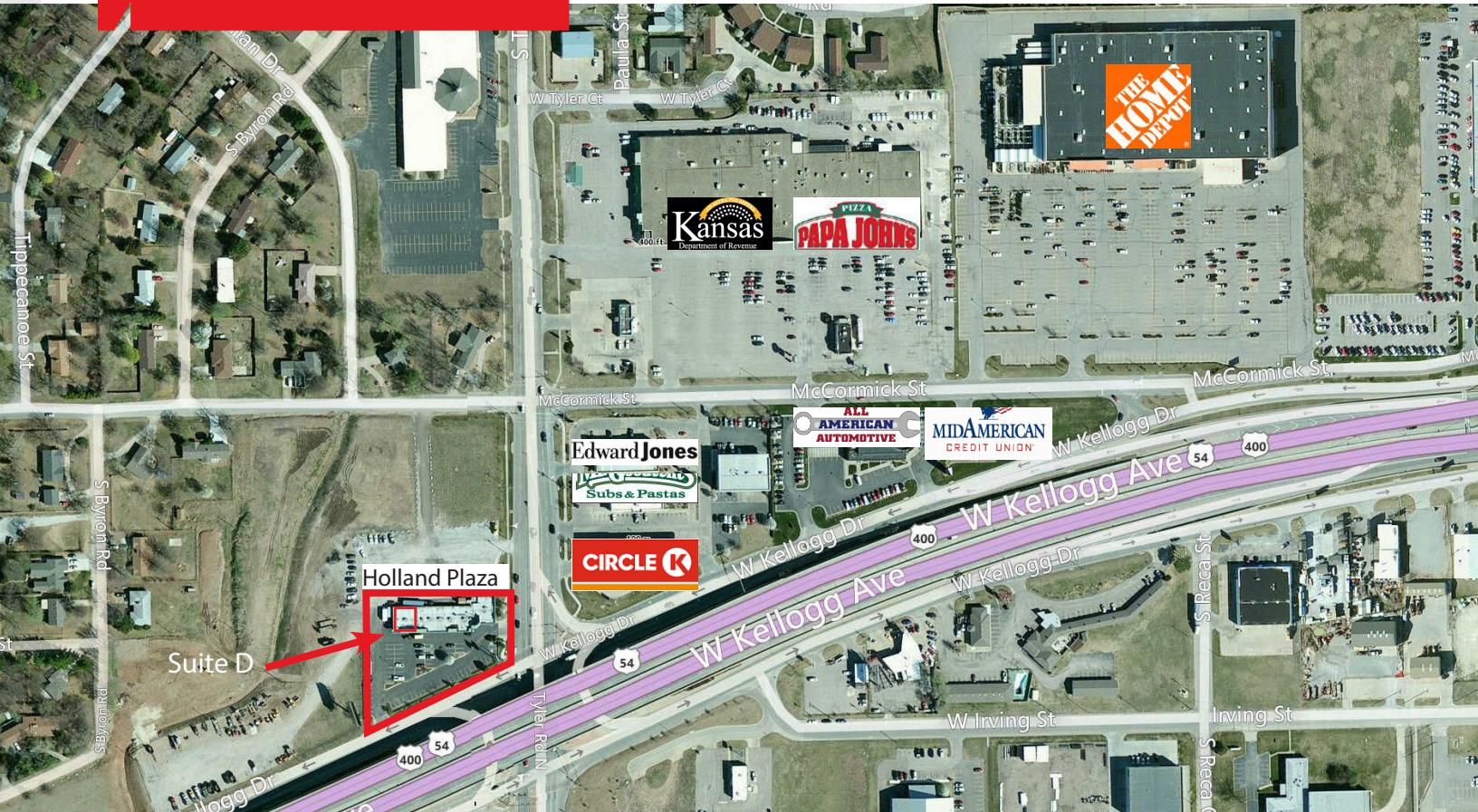


For more information:

**Troy Farha**

316.262.0000 • [TFarha@NAIMartens.com](mailto:TFarha@NAIMartens.com)

For Lease  
 Tyler Road  
 Retail/Office  
 Wichita, Kansas



**2020 Demographics**

Population	Households	Median HH Income
■ 1 Mile: 2,975	■ 1 Mile: 1,281	■ 1 Mile: \$56,418
■ 3 Mile: 51,199	■ 3 Mile: 20,820	■ 3 Mile: \$63,482
■ 5 Mile: 131,684	■ 5 Mile: 51,371	■ 5 Mile: \$61,349



For more information:

**Troy Farha**

316.262.0000 • TFarha@NAIMartens.com

NAI Martens  
 435 South Broadway  
 Wichita, KS 67202  
 316.262.0000

[BuildingKansas.com](http://BuildingKansas.com)

Independently Owned and Operated. The information contained herein was obtained from sources believed reliable; however, NAI Martens Company makes no guarantees, warranties or representations as to the completeness or accuracy thereof. The presentation of this property is submitted subject to errors, omissions, change of price or conditions prior to sale or lease, or withdrawal without notice.