



Washington Professional Campus

900 Route 168, Unit G
Blackwood, New Jersey
08012

OFFERING SUMMARY

Sale Price:	\$649,900
Building Size:	6,245 SF
Available SF:	2,500 - 6,245 SF
Lot Size:	
Lease Rate / SF:	\$12.00/SF
Market:	Southern New Jersey
Submarket:	Camden County

Property Overview

Renovated Professional Free Standing Office For Sale or Lease

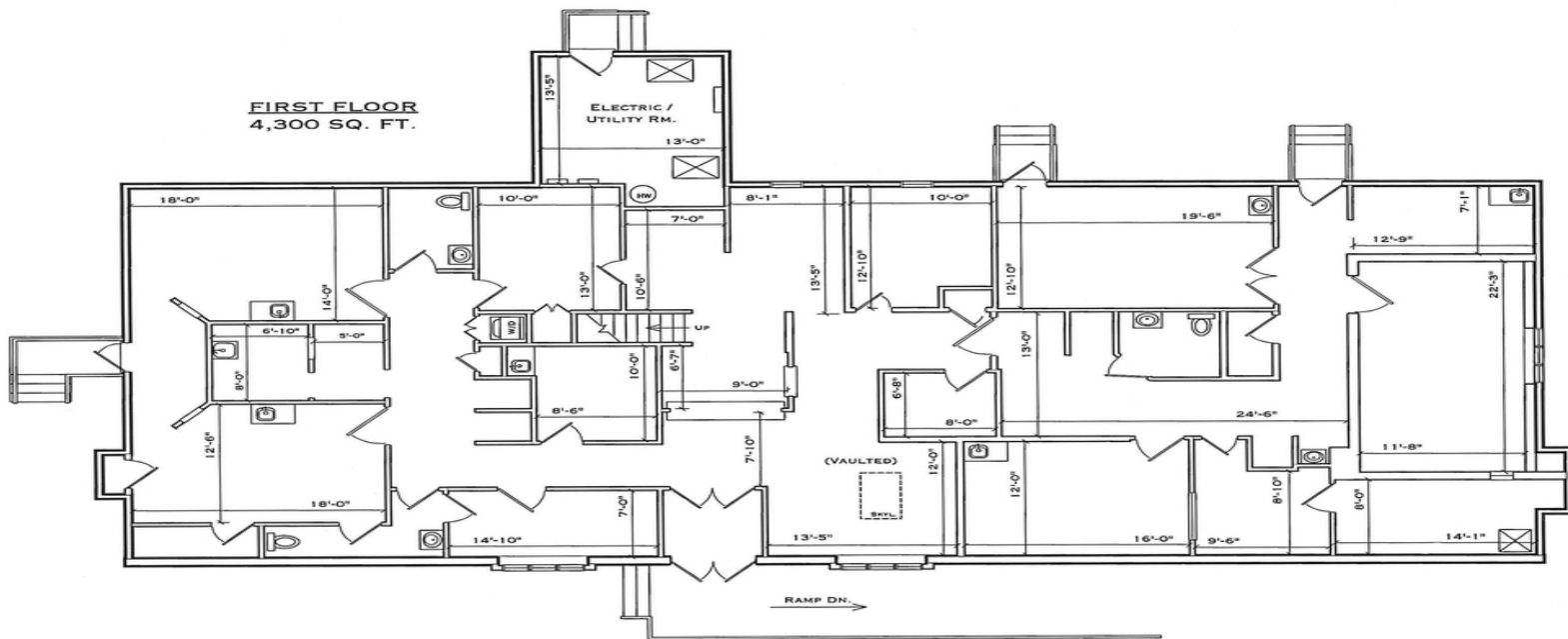
Professional office with many new interior upgrades including mechanical systems. Easily adaptable to almost any office setting including medical office. There is a full kitchen, 3 bathrooms, a large reception/waiting area and multiple large offices/conference rooms. All new exterior siding and a new roof make this a relatively maintenance free opportunity. Available immediately. Showings by appointment only.

Property Highlights

- First Floor - 4,300 SF
- (6) exam rooms with sinks
- (3) restrooms
- Reception and waiting room
- (4) offices
- Second Floor - 1,945 SF
- Kitchenette
- Restroom
- Large bullpen area
- Ample storage



Joe Riggs
C: 609 352 1162
joe.riggs@naimertz.com



joe.riggs@naimertz.com

NAI MERTZ DISCLAIMER: NO WARRANTY OR REPRESENTATION, EXPRESS OR IMPLIED, IS MADE AS TO THE ACCURACY OF THE INFORMATION CONTAINED HEREIN, AND THE SAME IS SUBMITTED SUBJECT TO ERRORS, OMISSIONS, CHANGE OF PRICE, RENTAL OR OTHER CONDITIONS, PRIOR SALE, LEASE OR FINANCING, OR WITHDRAWAL WITHOUT NOTICE, AND OF ANY SPECIAL LISTING CONDITIONS IMPOSED BY OUR PRINCIPALS. NO WARRANTIES OR REPRESENTATIONS ARE MADE AS TO THE CONDITION OF THE PROPERTY OR ANY HAZARDS CONTAINED THEREIN ARE ANY TO BE IMPLIED. OUTLINES ARE APPROXIMATE AND SHOWN ONLY TO IDENTIFY THE PARCEL IN CONSIDERATION.



FOR SALE



OFFICE



6,245 SF



Google

Map data ©2021



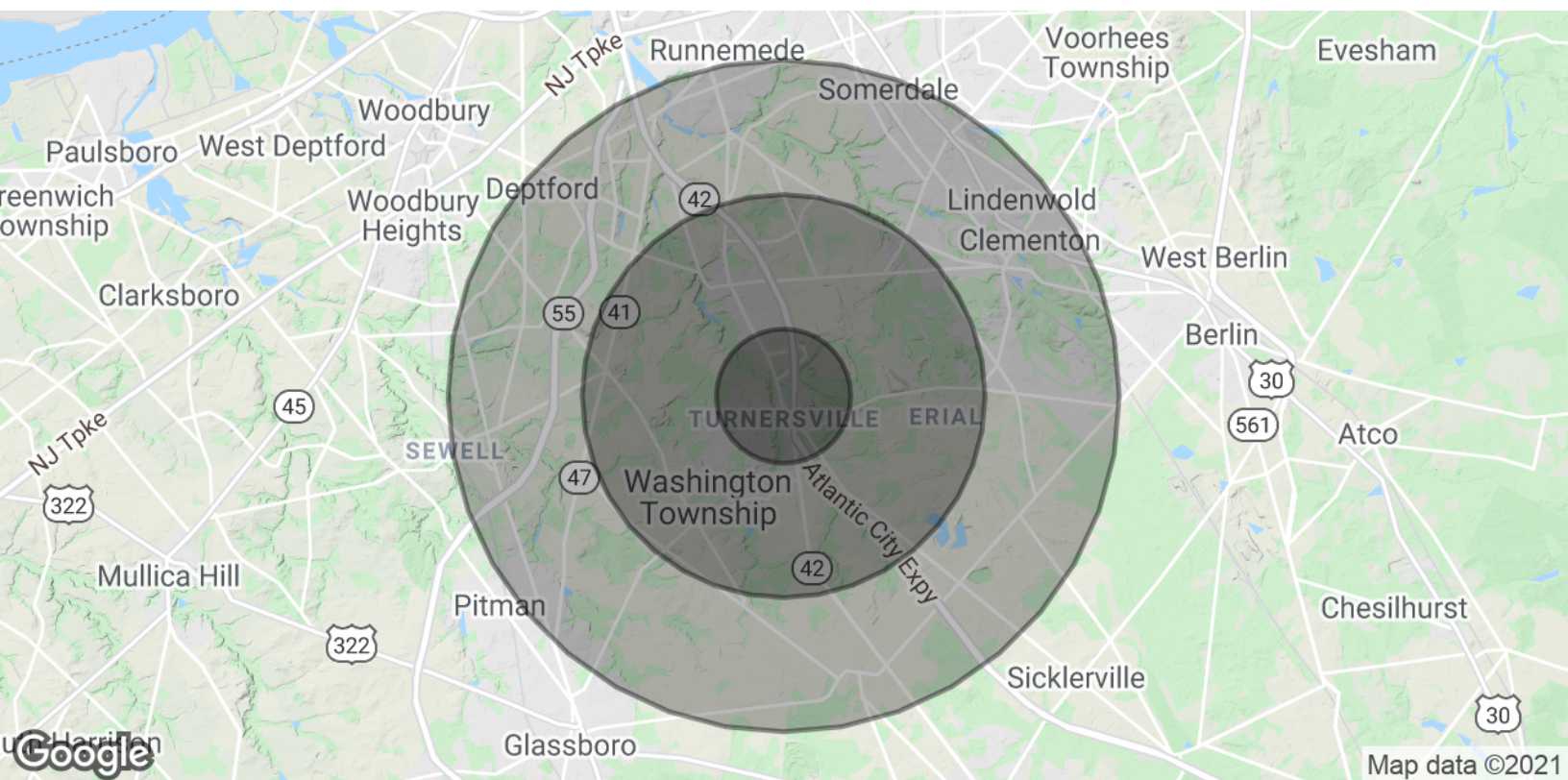
Joe Riggs

C: 609 352 1162

joe.riggs@naimertz.com

<https://naimertz.com>

NAI MERTZ DISCLAIMER: NO WARRANTY OR REPRESENTATION, EXPRESS OR IMPLIED, IS MADE AS TO THE ACCURACY OF THE INFORMATION CONTAINED HEREIN, AND THE SAME IS SUBMITTED SUBJECT TO ERRORS, OMISSIONS, CHANGE OF PRICE, RENTAL OR OTHER CONDITIONS, PRIOR SALE, LEASE OR FINANCING, OR WITHDRAWAL WITHOUT NOTICE, AND OF ANY SPECIAL LISTING CONDITIONS IMPOSED BY OUR PRINCIPALS NO WARRANTIES OR REPRESENTATIONS ARE MADE AS TO THE CONDITION OF THE PROPERTY OR ANY HAZARDS CONTAINED THEREIN ARE ANY TO BE IMPLIED. OUTLINES ARE APPROXIMATE AND SHOWN ONLY TO IDENTIFY THE PARCEL IN CONSIDERATION.



POPULATION

	1 MILE	3 MILES	5 MILES
Total Population	6,625	69,480	197,592
Average age	34.5	37.4	37.2
Average age (Male)	33.0	35.8	35.7
Average age (Female)	35.4	38.6	38.2

HOUSEHOLDS & INCOME

	1 MILE	3 MILES	5 MILES
Total households	2,207	24,816	71,906
# of persons per HH	3.0	2.8	2.7
Average HH income	\$92,650	\$83,341	\$81,000
Average house value	\$312,536	\$268,148	\$249,770

* Demographic data derived from 2010 US Census



Joe Riggs

C: 609 352 1162

joe.riggs@naimertz.com