

# 515 Busse Road, Elk Grove Village

25,188 SQUARE FEET



## FACILITY

AVAILABLE	25,188 SF
BUILDING SIZE	266,989 SF
OFFICE AREA	5,780 SF
POWER	600 amps
CEILING HEIGHT	20'6" clear
LOADING	2 interior docks 1 drive-in door
CAR PARKING	1.29 / 1,000 SF
NET RATE	Subject to Offer

## AMENITIES

- High image property
- Visibility on Busse Road (Route 83)
- Institutional ownership and management

## LOCATION

- Located in Regent O'Hare Business Center
- Near north cargo entrance and future west entrance to O'Hare Airport
- Minutes from new 4-way interchange at I-90 / Elmhurst Road

B R E N N A N  
I N V E S T M E N T  
G R O U P

**NAI**Hiffman  
Commercial Real Estate Services, Worldwide.

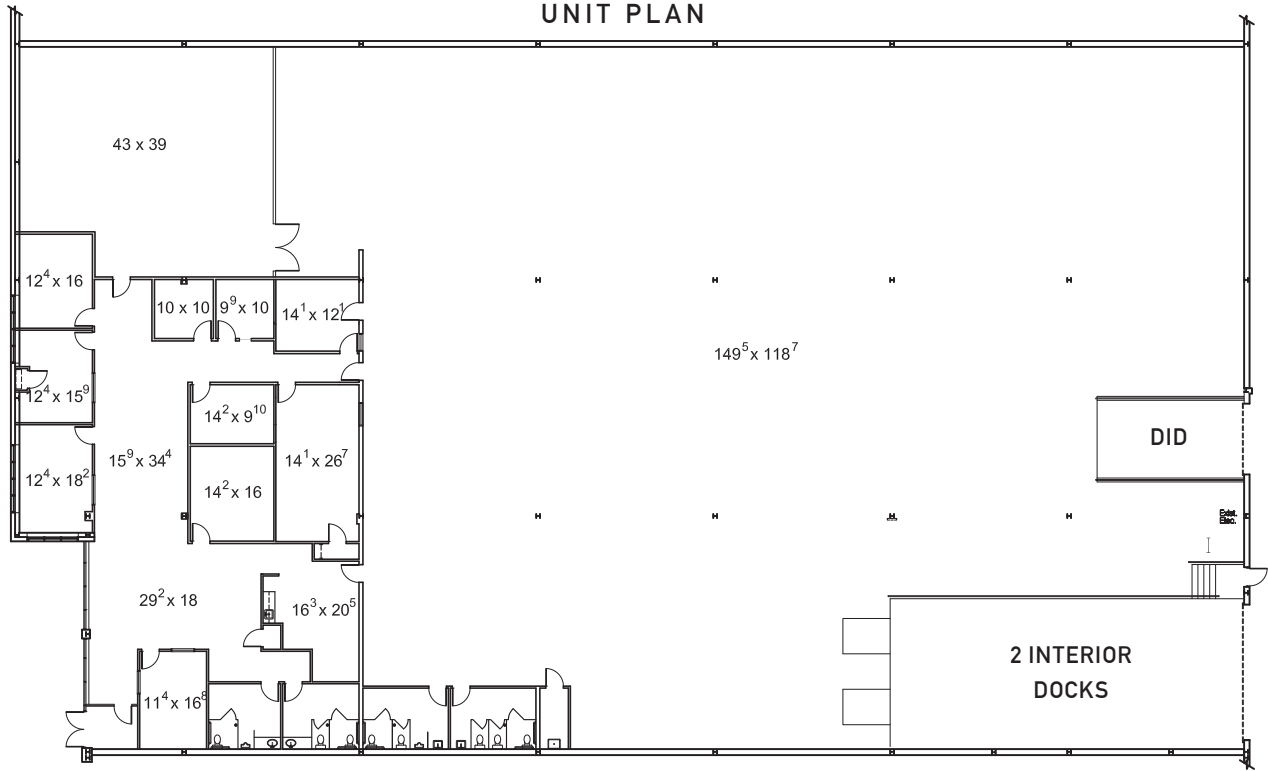
Terry Herlihy  
630 693 0664  
therlihy@hiffman.com

# 515 Busse Road, Elk Grove Village

25,188 SQUARE FEET



## UNIT PLAN



## BUILDING / SITE PLAN

