

For Lease

Office Suites

6154 N. Meeker Place, Suite 200, Boise



AVAILABLE PROPERTY

Location	Boise Research Center - Chinden Blvd, S on Explorer Dr, N on N. Meeker Place
Building Size	±23,005 SF
Available	Suite 200: ±3,239 SF
Zoning	T-1D
Lease Rate	\$12.50 SF/yr (NNN)
TI Allowance	Negotiable

SITE INFORMATION

- Professional office space located in the Boise Research Center with convenient access to Boise, Eagle, Garden City and Meridian
- Large offices, conference room, breakroom, server/storage room, private restrooms
- Fiber optics into building
- Ample parking and monument signage
- Close to all services as well as Hewlett Packard campus, the West YMCA and peaceful walking paths
- Lockbox on suite door

DEMOGRAPHICS	1 Mile	3 Miles	5 Miles
Total Households	2,557	25,329	61,580
Total Population	6,945	67,781	162,734
Average HH Income	\$78,969	\$78,888	\$76,932



5531 N. Glenwood St.,
Boise, ID 83714
208-229-2020

Steve Yates

steve@naiselect.com
C: 208-830-3173
D: 208-229-6020

Dennis Kelley

dennis@naiselect.com
C: 208-890-7700
D: 208-229-6021

For Lease

Office Suites

±3,239 SF | \$12.50 SF/yr



NAISelect

5531 N. Glenwood St.,
Boise, ID 83714
208-229-2020

Steve Yates

steve@naiselect.com
C: 208-830-3173
D: 208-229-6020

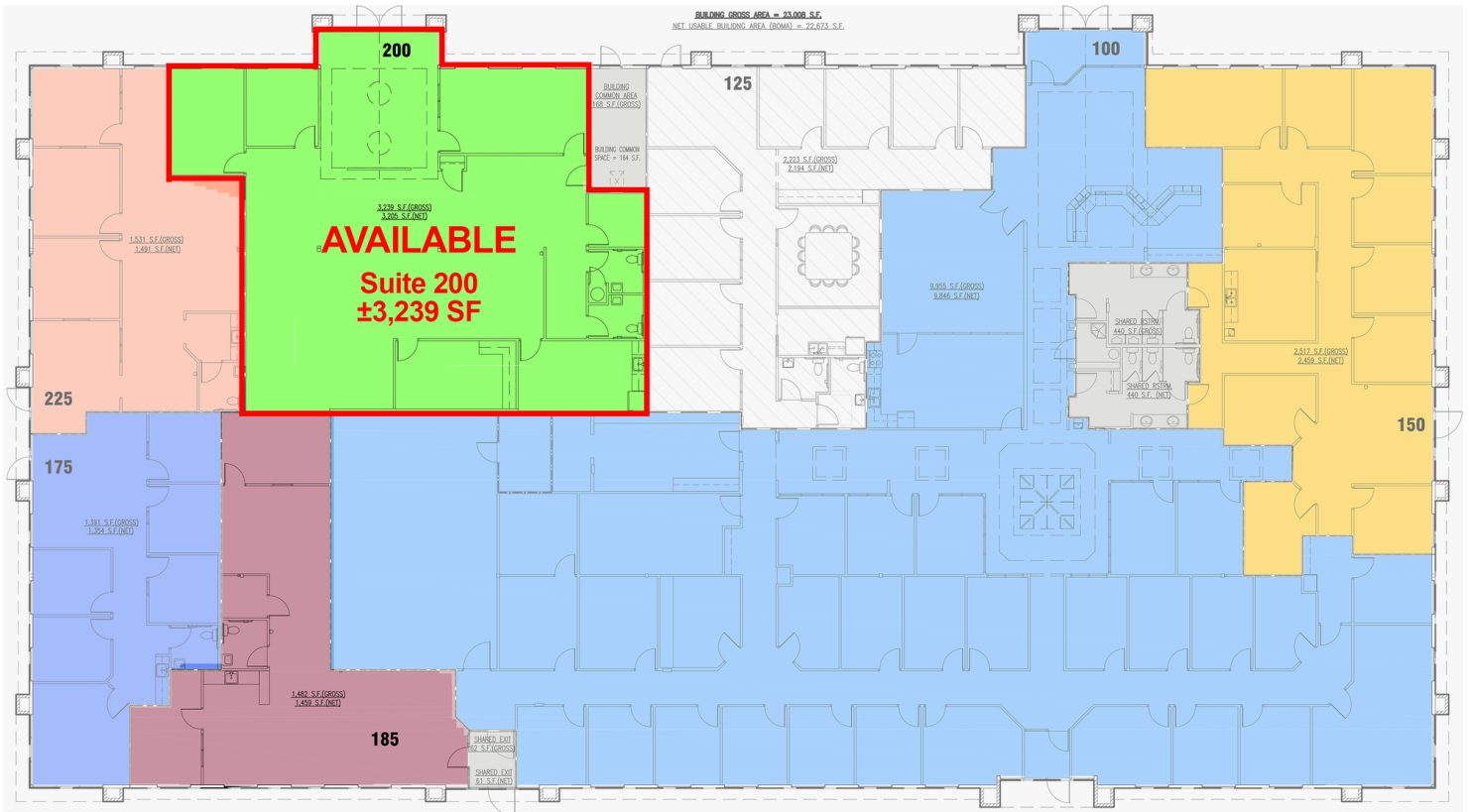
Dennis Kelley

dennis@naiselect.com
C: 208-890-7700
D: 208-229-6021

For Lease

Office Suites

±3,239 SF | \$12.50 SF/yr



NAISelect
5531 N. Glenwood St.,
Boise, ID 83714
208-229-2020

Steve Yates
steve@naiselect.com
C: 208-830-3173
D: 208-229-6020

Dennis Kelley
dennis@naiselect.com
C: 208-890-7700
D: 208-229-6021