

# FOR LEASE

765 Haywood Rd. Greenville, SC 29607

**NAI** Earle Furman

**\$18.50 SF/YR (NNN)**



## ±2,080-2,355 SF | The Promenade at Haywood

- Two Suites Available: ±2,080 SF (Suite C) and ±2,355 SF End-Cap
- The Promenade at Haywood is located at the first signalized intersection off I-385
- Excellent location next to Haywood Mall (SC's largest mall with 1.25 million square feet)
- Traffic count: 24,000 VPD
- Neighboring businesses include Prisma Health Patewood Hospital, St. Francis Eastside, and Fluor Enterprises, Inc.
- Co-Tenants include Firehouse Subs, T-Mobile, Running Co., Geiss and Sons, Sushi Hana, and Kim's Nails
- Lease rate: \$18.50/SF NNN
- NNN charges: \$3.13/SF



**Jimmy Wright**

O: +1 864 232 9040

[jwright@naiearlefurman.com](mailto:jwright@naiearlefurman.com)



**Geoff Beans**

O: +1 419 913 6903

[gbeans@naiearlefurman.com](mailto:gbeans@naiearlefurman.com)

No Warranty Or Representation, Express Or Implied, Is Made As To The Accuracy Of The Information Contained Herein, And The Same Is Submitted Subject To Errors, Omissions, Change Of Price, Rental Or Other Conditions, Prior Sale, Lease Or Financing, Or Withdrawal Without Notice, And Of Any Special Listing Conditions Imposed By Our Principals. No Warranties Or Representations Are Made As To The Condition Of The Property Or Any Hazards Contained Therein Any To Be Implied.



**101 E Washington St**  
Greenville, SC 29601  
[naiearlefurman.com](http://naiearlefurman.com)

# AERIAL MAPS

765 Haywood Rd. Greenville, SC 29607



✉ **Jimmy Wright**  
O: +1 864 232 9040  
jwright@naiearlefurman.com

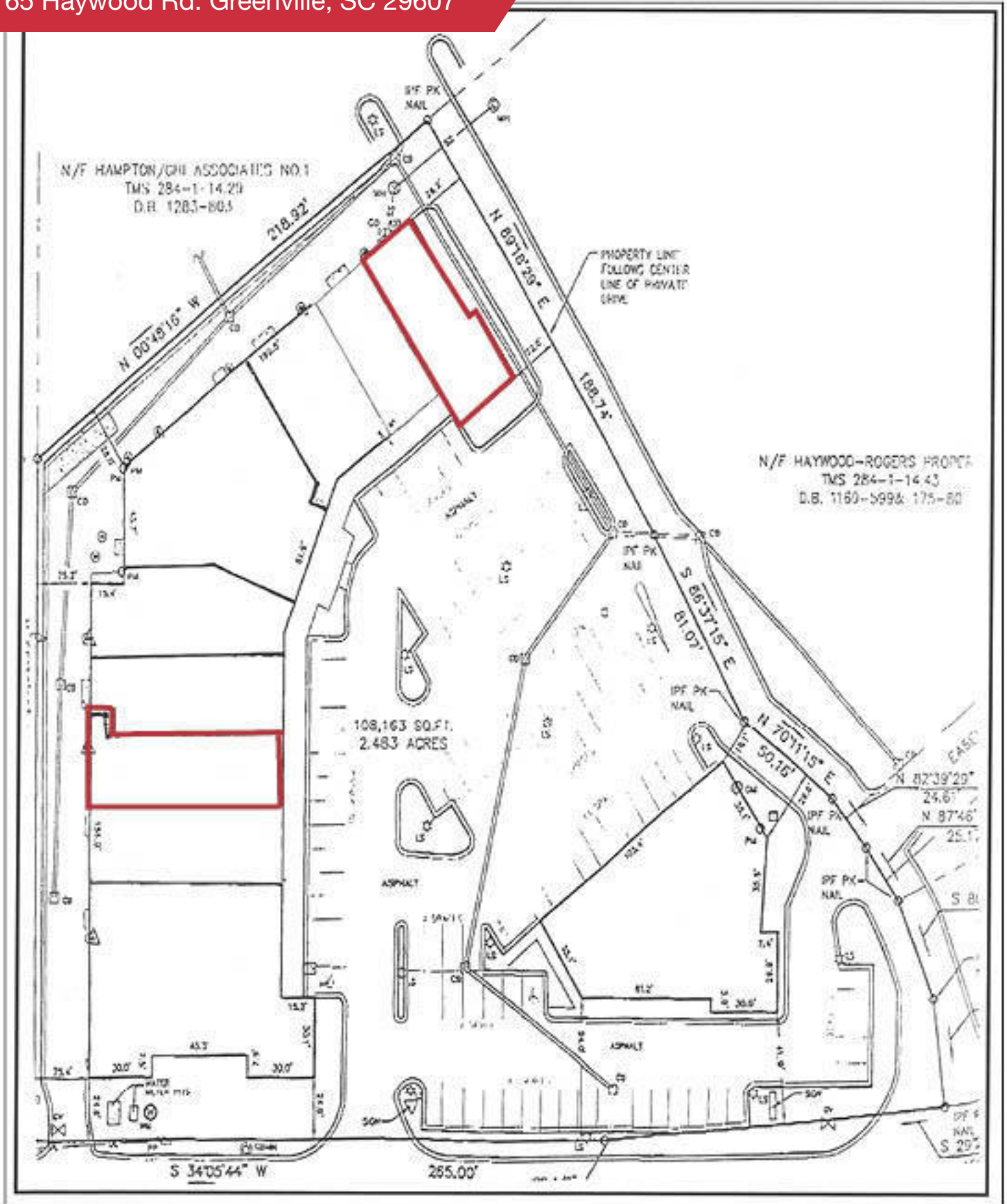
✉ **Geoff Beans**  
O: +1 419 913 6903  
gbeans@naiearlefurman.com

No Warranty Or Representation, Express Or Implied, Is Made As To The Accuracy Of The Information Contained Herein, And This Same Is Submitted Subject To Errors, Omissions, Change Of Price, Rental Or Other Conditions, Prior Sale, Lease Or Financing, Or Withdrawal Without Notice, And Of Any Special Listing Conditions Imposed By Our Principals. No Warranties Or Representations Are Made As To The Condition Of The Property Or Any Hazards Contained Therein Any To Be Implied.

**NAI Earle Furman**

# SITE PLAN

765 Haywood Rd. Greenville, SC 29607



✉ **Jimmy Wright**  
O: +1 864 232 9040  
jwright@naiearlefurman.com

✉ **Geoff Beans**  
O: +1 419 913 6903  
gbeans@naiearlefurman.com

No Warranty Or Representation, Express Or Implied, Is Made As To The Accuracy Of The Information Contained Herein, And The Same Is Submitted Subject To Errors, Omissions, Change Of Price, Partial Or Other Conditions, Prior Sale, Lease Or Financing, Or Withdrawal Without Notice And Of Any Special Listing Conditions Imposed By Our Principals. No Warranties Or Representations Are Made As To The Condition Of The Property Or Any Hazards Contained Therein Are Any To Be Implied.

📍 **101 E Washington St**  
Greenville, SC 29601  
naiearlefurman.com