

± 33.3 Sloan Lake Estate

Woodruff, SC | Spartanburg County

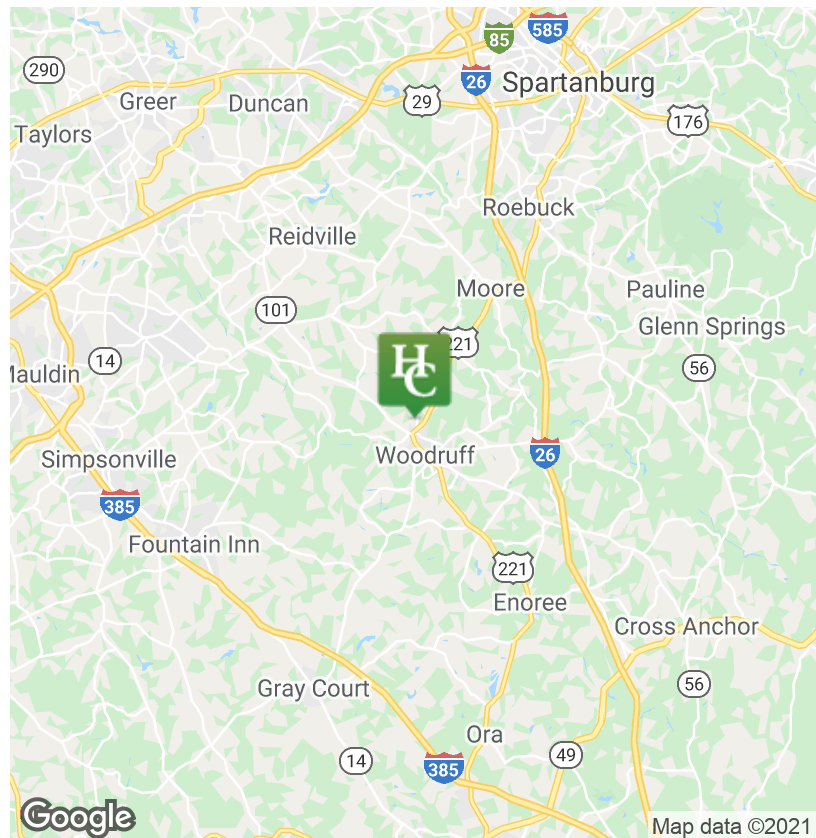


\$499,999



Land | 33.3 Acres

- ±33 Acres Located in Spartanburg County
Tax Map Number 4-25-00-026.00
- Located in Woodruff, SC which was named No. 1 Up-and Coming in 2020
- Zoned for Woodruff's Award-Winning Schools in Spartanburg District 4
- Prime Development Opportunity
- ± 3 minutes to the Growing Downtown Woodruff
- ± 540 Feet of Frontage Road on Sloan Lake Rd
- ±1 mile from Food Lion, Tractor Supply, Ace Hardware, Zaxby's, Burger King, McDonalds, Pizza Hut, Subway and other stores and restaurants
- Public Water on Site
- Buyer &/or Buyer's Agent(s) to confirm acreage, zoning, utility locations, and costs.



✉ Tyler Whims
+1 864 430 4507
twhims@naiearlefurman.com

✉ Tripp Taylor
+1 864 610 5263
ttaylor@naiearlefurman.com

No Warranty Or Representation, Express Or Implied, Is Made As To The Accuracy Of The Information Contained Herein, And The Same Is Submitted Subject To Errors, Omissions, Change Of Price, Rental Or Other Conditions, Prior Sale, Lease Or Financing, Or Withdrawal Without Notice, And Of Any Special Listing Conditions Imposed By Our Principals No Warranties Or Representations Are Made As To The Condition Of The Property Or Any Hazards Contained Therein Are Any To Be Implied.

📍 101 E Washington St
Greenville, SC 29601
naiearlefurman.com

Property Description

14 Sloan Lake Road Woodruff, SC 29388



PROPERTY DESCRIPTION

Surrounded by rapid industrial growth and new home developments, this property is located in the city limits of Woodruff, SC. There is a public infrastructure tax abatement program available for new developments. Located just minutes from all the amenities offered in Woodruff. This extraordinary property is ± 1 minute away from Woodruff's Main Street which doubles as Highway 221. This short drive takes you to your choice of restaurants and stores including: Food Lion, Ace Hardware, Tractor Supply, Zaxby's, Carolina Fine Foods, Burger King, McDonalds, Pizza Hut and Subway.

In 2020, Woodruff was named Number 1 for up-and-coming SC housing market, which was accredited to the city's quaint downtown, Spartanburg School District 4, and Woodruff's overall, "small-town feel". As Woodruff, South Carolina's population is expected to double in the next five years, Woodruff is also a convenient location for those who work in the cities of Greenville or Spartanburg, as it's almost in the middle of the two.

LOCATION DESCRIPTION

This parcel is located close to I-26, I-85 and 385.

$\pm .4$ Mile to intersection of N Main/Highway 221 & Highway 101

± 30 Minutes From Downtown Greenville. Take I-385 S to I-85 N to SC-101 S/State Hwy 101 in Spartanburg County. Take exit 60 and continue SC-101 S/State Hwy 101. Drive to SC-418 E

± 30 Minutes From Downtown Spartanburg. Take I-26 E and US-221 S to SC-101/SC-146 in Woodruff Drive to SC-418 W Turn right onto SC-101/SC-146

✉ Tyler Whims
+1 864 430 4507
twhims@naiearlefurman.com

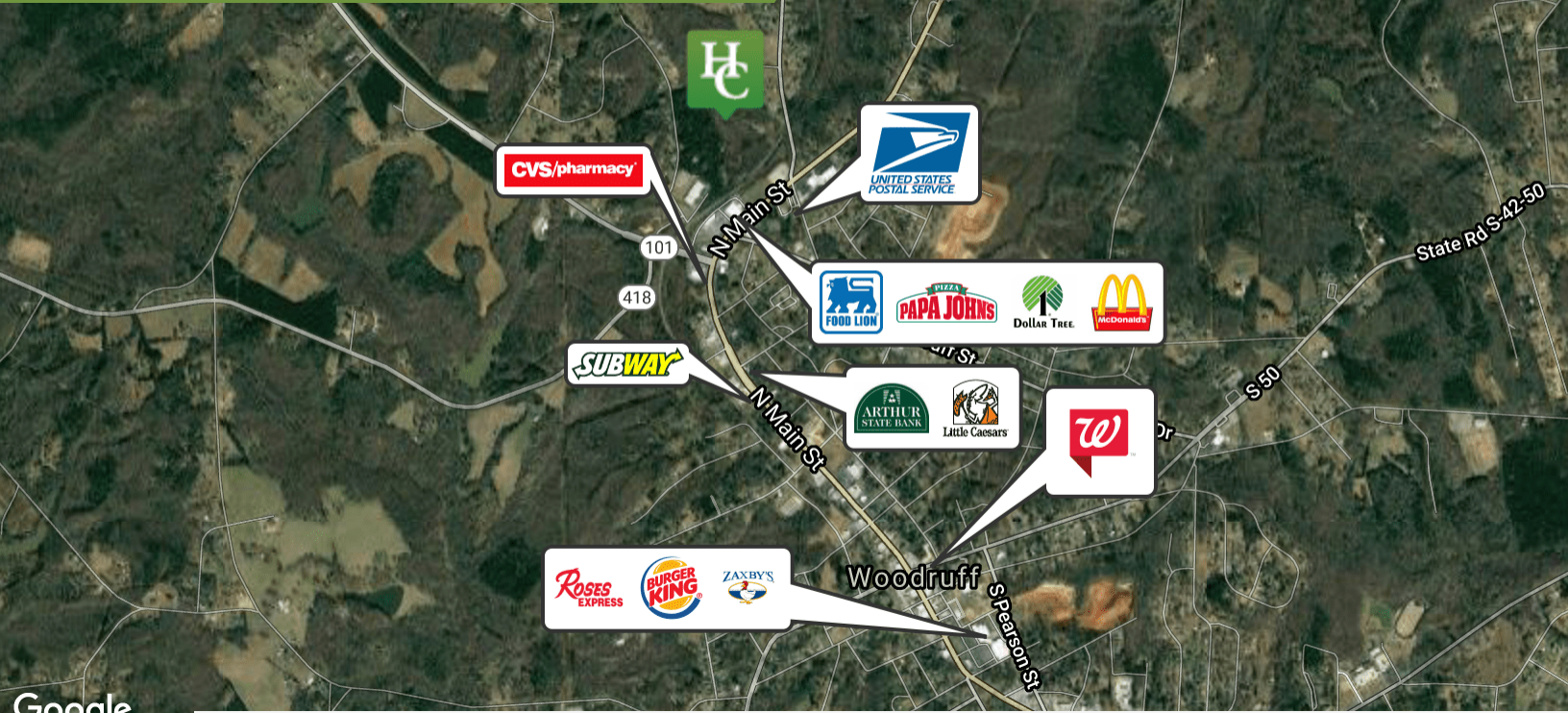
✉ Tripp Taylor
+1 864 610 5263
ttaylor@naiearlefurman.com

No Warranty Or Representation, Express Or Implied, Is Made As To The Accuracy Of The Information Contained Herein, And The Same Is Submitted Subject To Errors, Omissions, Change Of Price, Rental Or Other Conditions, Prior Sale, Lease Or Financing Or Withdrawal Without Notice, And Of Any Special Listing Conditions Imposed By Our Principals No Warranties Or Representations Are Made As To The Condition Of The Property Or Any Hazards Contained Therein Are Any To Be Implied.



± 33.3 Acres

Located in Spartanburg County



Map data ©2021 Imagery ©2021 Landsat / Copernicus, Maxar Technologies, U.S. Geological Survey, USDA Farm Service Agency

± 1 MILE FROM DOWNTOWN WOODRUFF



✉ Tyler Whims
+1 864 430 4507
twhims@naiearlefurman.com

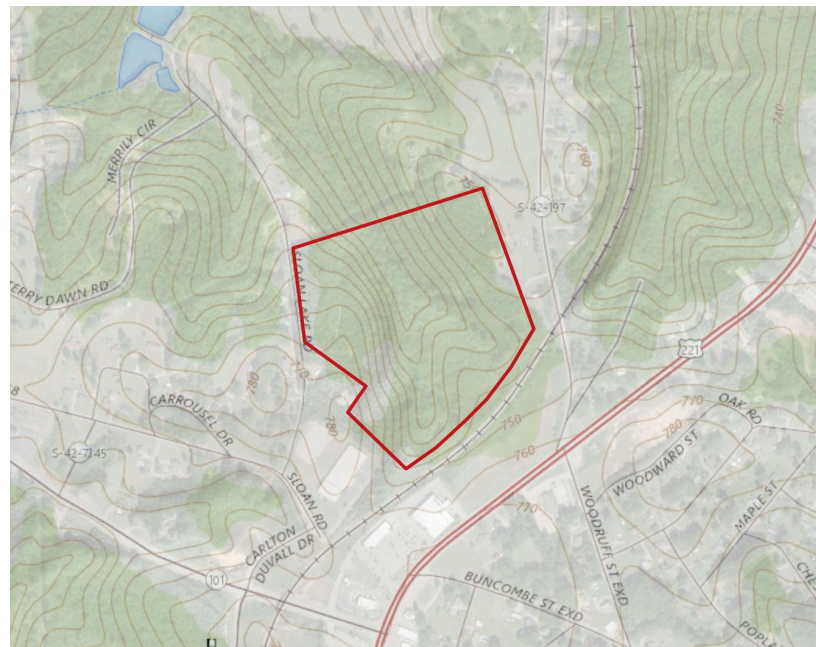
✉ Tripp Taylor
+1 864 610 5263
ttaylor@naiearlefurman.com

No Warranty Or Representation, Express Or Implied, Is Made As To The Accuracy Of The Information Contained Herein, And The Same Is Submitted Subject To Errors, Omissions, Change Of Price, Rental Or Other Conditions, Prior Sale, Lease Or Financing Or Withdrawal Without Notice, And Of Any Special Listing Conditions Imposed By Our Principals No Warranties Or Representations Are Made As To The Condition Of The Property Or Any Hazards Contained Therein Are Any To Be Implied.



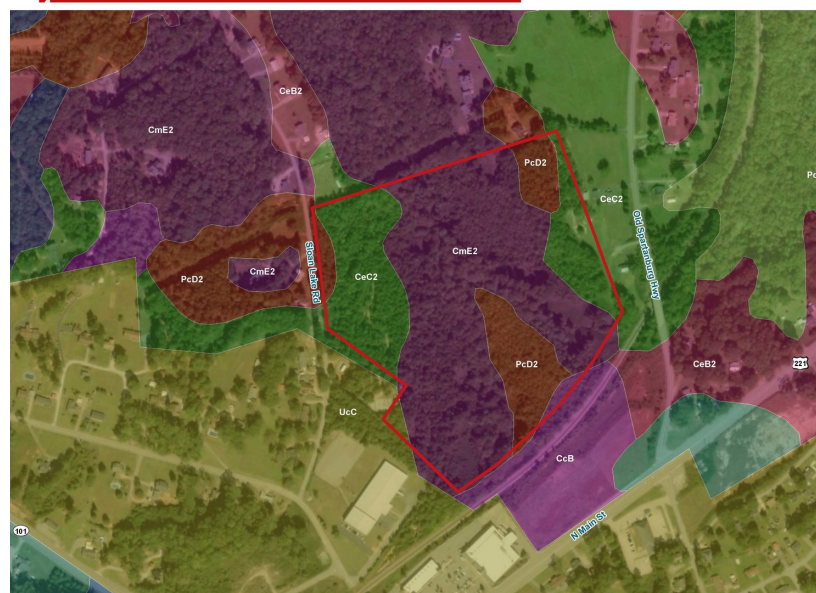
Map Sets

14 Sloan Lake Road Woodruff, SC 29388



FEMA National Flood Hazard Layer

Soil Survey



✉ Tyler Whims
+1 864 430 4507
twhims@naiearlefurman.com

✉ Tripp Taylor
+1 864 610 5263
ttaylor@naiearlefurman.com

No Warranty Or Representation, Express Or Implied, Is Made As To The Accuracy Of The Information Contained Herein, And The Same Is Submitted Subject To Errors, Omissions, Change Of Price, Rental Or Other Conditions, Prior Sale, Lease Or Financing, Or Withdrawal Without Notice, And Of Any Special Listing Conditions Imposed By Our Principals No Warranties Or Representations Are Made As To The Condition Of The Property Or Any Hazards Contained Therein Are Any To Be Implied.

📍 101 E Washington St
Greenville, SC 29601
naiearlefurman.com