

For Lease

Boise Towne Square

104 N Milwaukee St, Boise, ID 83704



AVAILABLE PROPERTY

Location	Located near the corner of Milwaukee and Franklin on the pad of Boise Towne Square Regional Mall
Building Size	29,035 SF
Availability	2,100 - 6,100 SF
Lease Type	NNN
Lease Rate	Contact Agent
Lot Size	1.96 Acres
TI Allowance	Negotiable

SITE INFORMATION

- High Visibility on both Franklin & Milwaukee
- Adjacent to Boise Towne Square Mall, serving nearly 500,000 area residents
- Ample Parking
- Traffic Counts: Franklin Rd 23,375 VPD
Milwaukee 23,865 VPD



DEMOGRAPHICS	1 Mile	3 Miles	5 Miles
Total Households	4,555	36,760	88,370
Total Population	11,018	90,159	216,122
Average HH Income	\$48,033	\$54,059	\$59,174

NAI Select
5531 N. Glenwood St.,
Boise, ID 83714
208-229-2020

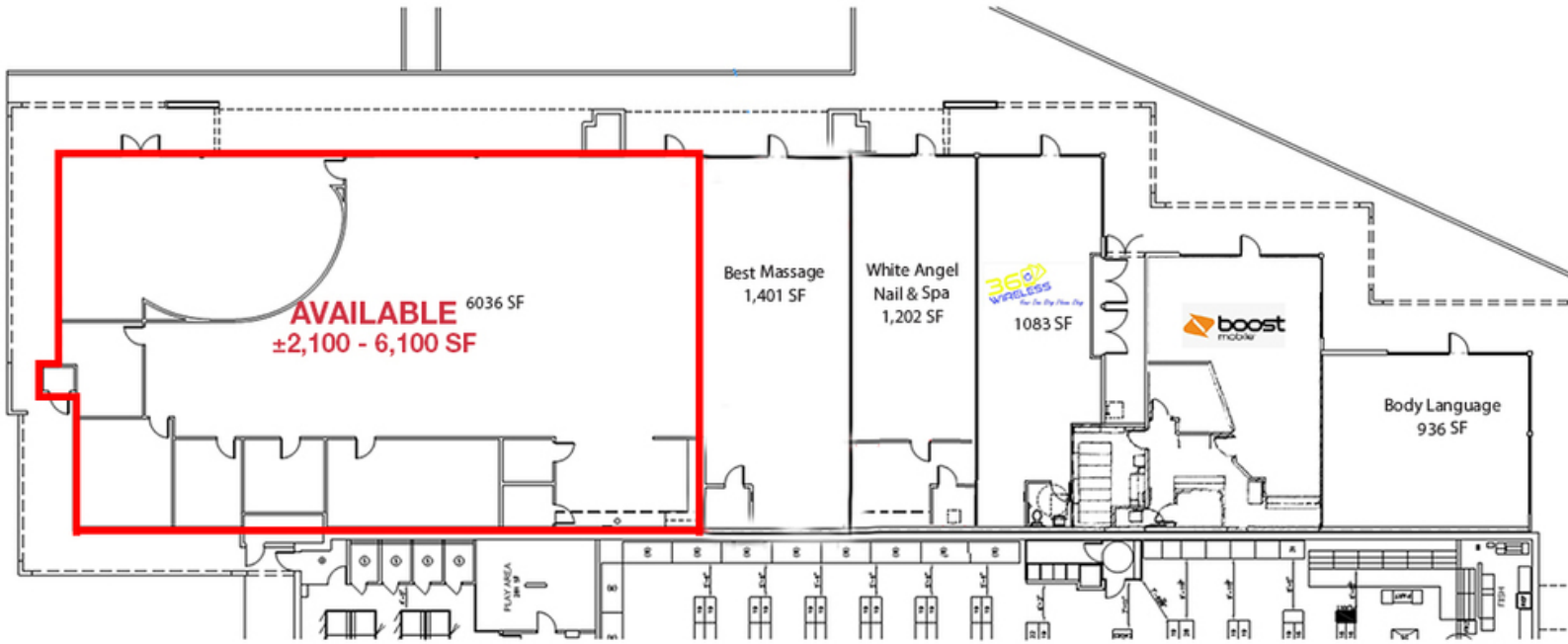
Mike Erkmann, CCIM
mike@naiselect.com
C: 208-629-6003
D: 208-229-6015

Drey Campbell
drey@naiselect.com
C: 208-440-1926
D: 208-229-6003

For Lease

Retail Property

2,100 - 6,100 SF | Contact Agent



NAISelect
5531 N. Glenwood St.,
Boise, ID 83714
208-229-2020

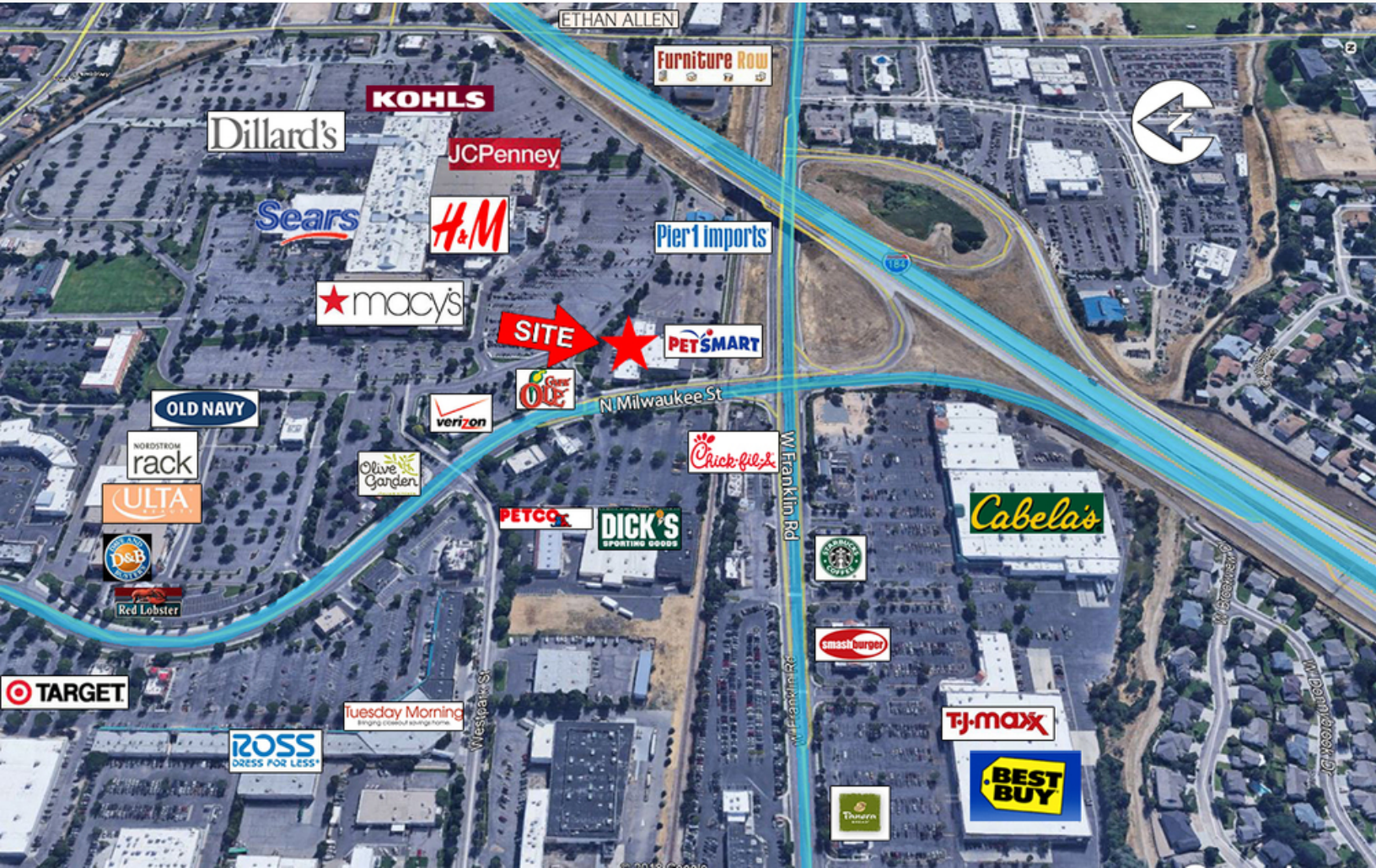
Mike Erkmann, CCIM
mike@naiselect.com
C: 208-629-6003
D: 208-229-6015

Drey Campbell
drey@naiselect.com
C: 208-440-1926
D: 208-229-6003

For Lease

Retail Property

2,100 - 6,100 SF | Contact Agent



NAISelect

5531 N. Glenwood St.,
Boise, ID 83714
208-229-2020

Mike Erkmann, CCIM

mike@naiselect.com
C: 208-629-6003
D: 208-229-6015

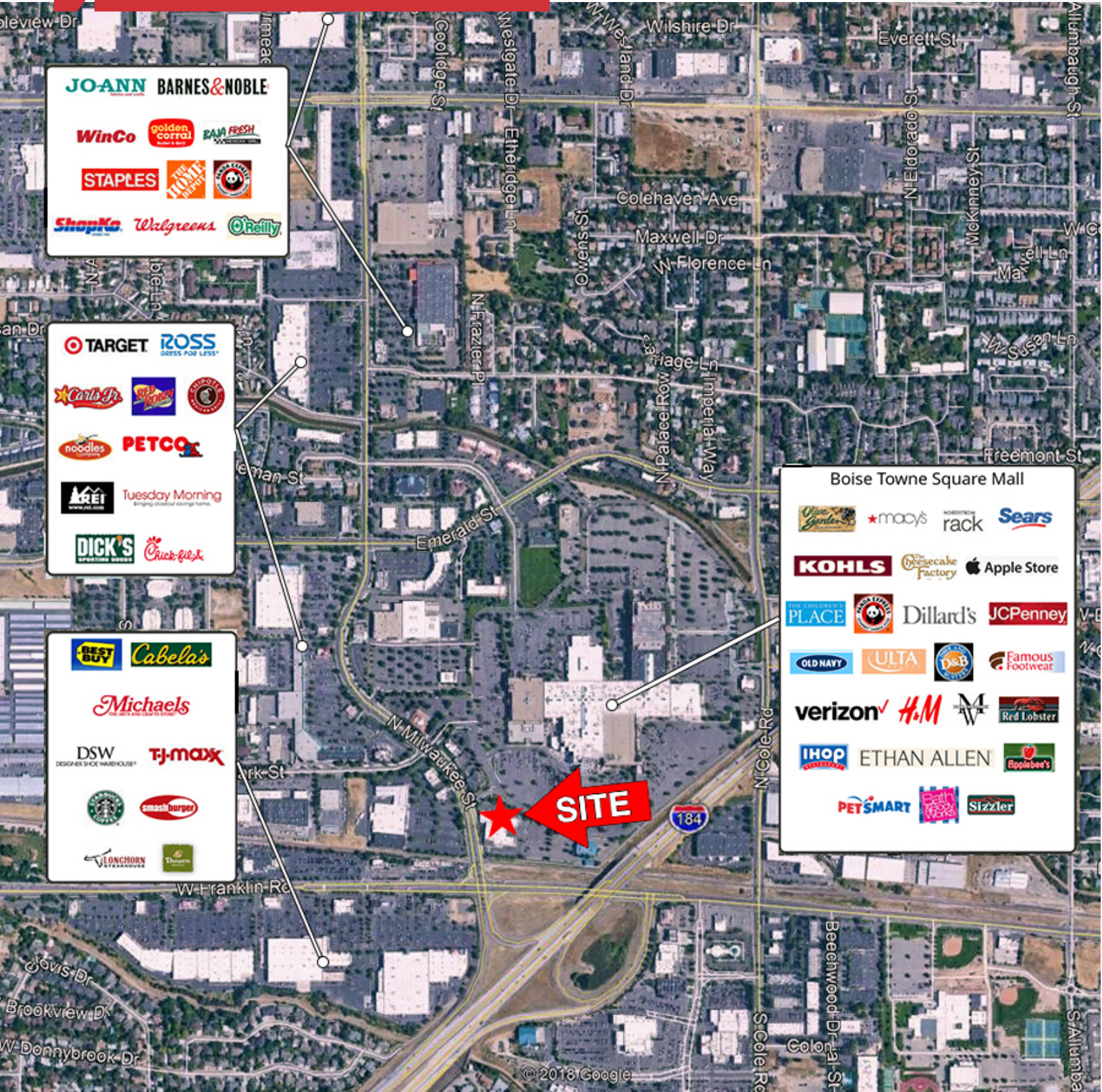
Drey Campbell

drey@naiselect.com
C: 208-440-1926
D: 208-229-6003

For Lease

Retail Property

2,100 - 6,100 SF | Contact Agent



NASelect

5531 N. Glenwood St.,
Boise, ID 83714
208-229-2020

Mike Erkman, CCIM

mike@naiselect.com
C: 208-629-6003
D: 208-229-6015

Drey Campbell

drey@naiselect.com
C: 208-440-1926
D: 208-229-6003