

# Mountain Retreat

0 Ed Gordon Sr. Drive Saluda, NC 28773



21.34± ACRES



## Saluda Mountains Passage

- Asking Price: \$13,571 /acre
- Henderson County Tax Map #s: 9584896898
- 2,390+/- feet of frontage on Altamont Road
- Zoned R-3 Woodland / Residential
- Maximum Elevation of 2,070
- Excellent potential for a private estate or single family mountain home
- Located next to Greenville County Watershed
- 10 Minutes from Saluda, North Carolina



✉ Tripp Taylor  
+1 864 610 5263  
ttaylor@naiearlefurman.com

✉ Chandler Ayers  
+1 864 201 2221  
cayers@naiearlefurman.com

No Warranty Or Representation, Express Or Implied, Is Made As To The Accuracy Of The Information Contained Herein, And The Same Is Submitted Subject To Errors, Omissions, Change Of Price, Rental Or Other Conditions, Prior Sale, Lease Or Financing Or Withdrawal Without Notice, And Of Any Special Listing Conditions Imposed By Our Principals No Warranties Or Representations Are Made As To The Condition Of The Property Or Any Hazards Contained Therein Are Any To Be Implied.

📍 101 E Washington St  
Greenville, SC 29601  
naiearlefurman.com

Map data ©2021

# Property Description

0 Ed Gordon Sr. Drive Saluda, NC 28773



## PROPERTY DESCRIPTION

Ultimate privacy. Imagine out your back door you have 19,000 acres of buffer between you and your neighbors. This 21 Acre mountain retreat borders the Greenville County watershed. A pristine landscape of mountains, hills, rivers, waterfalls, & streams protected by conservation easement.

The property peak sits at roughly 2,000 feet above sea level exceeding the height of Paris Mountain and rivaling heights on Stone Mountain. The trek up is an adventurous one but ready and waiting for an owner with vision to build their secluded mountain escape. A hikers dream to walk outside and jump on the 500 mile Palmetto trail. The property is situated on mile 4.5 of the Saluda Mountain Passage.

Saluda Mountains Passage runs along the ridge defining the northern perimeter of the Poinsett Watershed and the border between the Carolinas. The 19,000-Acre watershed is a pristine wilderness area with remarkable habitat for rare plants and animals, including the threatened Peregrine falcon. Greenville Water System (Gw) owns the tract, which drains the headwaters of the North Saluda River into Poinsett Reservoir. The Nature Conservancy holds the conservation easement. GW permits hiking, but enforces strict rules in exchange for access. Please help Palmetto Conservation keep this passage open by following the rules. Note that many organisms in the streams have low tolerance for pollution. Practicing "Leave No Trace" is essential in this extraordinary ecosystem. The passage trailhead connects with Poinsett Reservoir Passage at Orchard Lake Campground.

✉ **Tripp Taylor**  
+1 864 610 5263  
ttaylor@naiearlefurman.com

✉ **Chandler Ayers**  
+1 864 201 2221  
cayers@naiearlefurman.com

No Warranty Or Representation, Express Or Implied, Is Made As To The Accuracy Of The Information Contained Herein, And The Same Is Submitted Subject To Errors, Omissions, Change Of Price, Rental Or Other Conditions, Prior Sale, Lease Or Financing Or Withdrawal Without Notice, And Of Any Special Listing Conditions Imposed By Our Principals No Warranties Or Representations Are Made As To The Condition Of The Property Or Any Hazards Contained Therein Are Any To Be Implied.



# Drone Photography

Saluda Mountains Passage



**Tripp Taylor**  
+1 864 610 5263  
ttaylor@naiearlefurman.com



**Chandler Ayers**  
+1 864 201 2221  
cayers@naiearlefurman.com

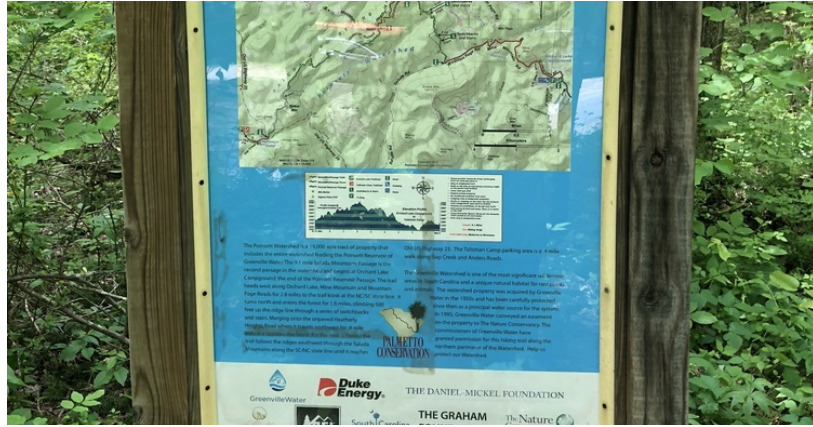
No Warranty Or Representation, Express Or Implied, Is Made As To The Accuracy Of The Information Contained Herein, And The Same Is Submitted Subject To Errors, Omissions, Change Of Price, Rental Or Other Conditions, Prior Sale, Lease Or Financing Or Withdrawal Without Notice, And Of Any Special Listing Conditions Imposed By Our Principals No Warranties Or Representations Are Made As To The Condition Of The Property Or Any Hazards Contained Therein Are Any To Be Implied.



**101 E Washington St**  
Greenville, SC 29601  
naiearlefurman.com

# Additional Photos

## Saluda Mountains Passage



✉ Tripp Taylor  
+1 864 610 5263  
ttaylor@naiearlefurman.com

✉ Chandler Ayers  
+1 864 201 2221  
cayers@naiearlefurman.com

No Warranty Or Representation, Express Or Implied, Is Made As To The Accuracy Of The Information Contained Herein, And The Same Is Submitted Subject To Errors, Omissions, Change Of Price, Rental Or Other Conditions, Prior Sale, Lease Or Financing Or Withdrawal Without Notice, And Of Any Special Listing Conditions Imposed By Our Principals No Warranties Or Representations Are Made As To The Conditions Of The Property Or Any Hazards Contained Therein Are Any To Be Implied.

📍 101 E Washington St  
Greenville, SC 29601  
naiearlefurman.com

# Property Boundary

Saluda Mountains Passage



✉ Tripp Taylor  
+1 864 610 5263  
ttaylor@naiearlefurman.com

✉ Chandler Ayers  
+1 864 201 2221  
cayers@naiearlefurman.com

No Warranty Or Representation, Express Or Implied, Is Made As To The Accuracy Of The Information Contained Herein, And The Same Is Submitted Subject To Errors, Omissions, Change Of Price, Rental Or Other Conditions, Prior Sale, Lease Or Financing Or Withdrawal Without Notice, And Of Any Special Listing Conditions Imposed By Our Principals No Warranties Or Representations Are Made As To The Condition Of The Property Or Any Hazards Contained Therein Are Any To Be Implied.

📍 101 E Washington St  
Greenville, SC 29601  
naiearlefurman.com

# Palmetto Trail

Saluda Mountains Passage



## Saluda Mountains Passage of the Palmetto Trail



### Fast Facts

- Established 1994
- Access to the outdoors from Walhalla in the Blue Ridge Mountains to Awendaw on the Intracoastal Waterway
- About two hours away from any part of the state
- South Carolina's longest pedestrian and bicycle Trail and largest Trail construction project—500 continuous miles when finished
- 350 Trail miles completed
- 26 passages ranging from 1.3 to 47 miles
- Backcountry, Rails-to-Trail, Greenways, City sidewalks, Urban bikeways, Steps of the State Capitol, Bridle, Nothing motorized.
- Connects state and county parks, national forests, nature preserves, wildlife management areas, Revolutionary War battlefields, Native American paths, urban to rural, swamps to mountains, maritime to sandhills to piedmont, and much more
- Easy, moderate, and strenuous levels of difficulty
- Accessible for day trips, weekend jaunts, and longer treks, including through-hikes from mountains to sea (or sea to mountains)
- One of 16 cross-state trails in the United States
- Designated a federal Millennium Legacy Trail
- Finish the Trail—150 miles to go in the Midlands and Upstate

The entire Palmetto Trail is open to hiking and backpacking. Designated passages and sites are available for mountain biking, horseback riding, and camping (see maps). The Trail cannot accommodate motorized vehicles.

Residents and visitors of all ages, abilities, and socioeconomic circumstances use the Palmetto Trail to enjoy nature, practice conservation, and learn history—all while being physically active. Traveled individually or together, the passages reveal the rich diversity and fascinating history, culture, and geography of the Palmetto State.

✉ Tripp Taylor  
+1 864 610 5263  
ttaylor@naiearlefurman.com

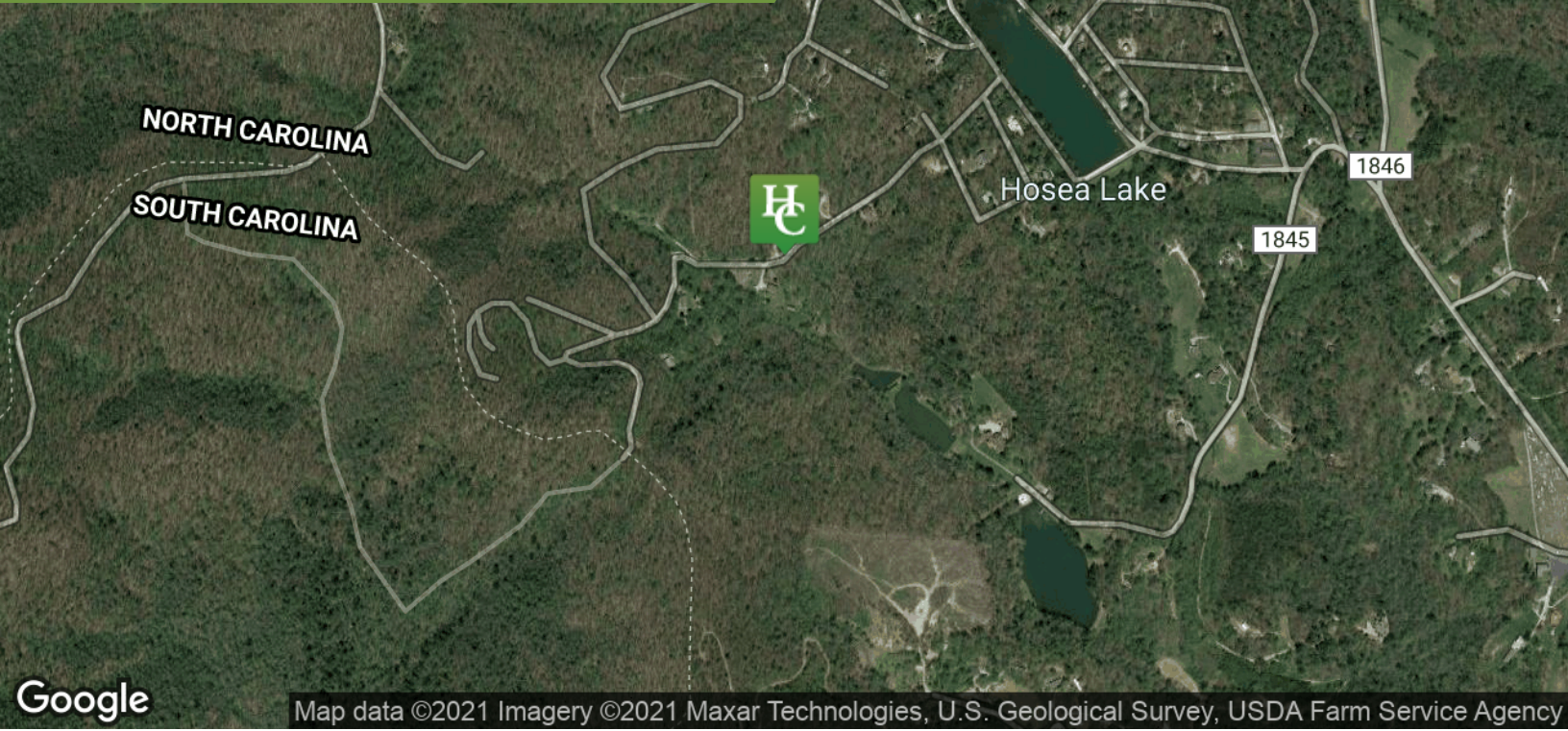
✉ Chandler Ayers  
+1 864 201 2221  
cayers@naiearlefurman.com

No Warranty Or Representation, Express Or Implied, Is Made As To The Accuracy Of The Information Contained Herein, And The Same Is Submitted Subject To Errors, Omissions, Change Of Price, Rental Or Other Conditions, Prior Sale, Lease Or Financing, Or Withdrawal Without Notice, And Of Any Special Listing Conditions Imposed By Our Principals No Warranties Or Representations Are Made As To The Condition Of The Property Or Any Hazards Contained Therein Are Any To Be Implied.

📍 101 E Washington St  
Greenville, SC 29601  
naiearlefurman.com

# Location

## Saluda Mountain Passage



✉ Tripp Taylor  
+1 864 610 5263  
ttaylor@naiearlefurman.com

✉ Chandler Ayers  
+1 864 201 2221  
cayers@naiearlefurman.com

No Warranty Or Representation, Express Or Implied, Is Made As To The Accuracy Of The Information Contained Herein, And The Same Is Submitted Subject To Errors, Omissions, Change Of Price, Rental Or Other Conditions, Prior Sale, Lease Or Financing Or Withdrawal Without Notice, And Of Any Special Listing Conditions Imposed By Our Principals No Warranties Or Representations Are Made As To The Condition Of The Property Or Any Hazards Contained Therein Are Any To Be Implied.

