

# FOR SUBLEASE

1 Caledon Court Greenville, SC 29615



## Office | 1,300 SF

- Suite D - 1,300 SF
- Sublease term expires 3/31/2022
- Lease rate excludes janitorial
- Conveniently located to Haywood Road, I-385 & I-85
- Outside city limits
- Lease rate: \$13.00/SF MG

Demographics	1 Mile	3 Miles	5 Miles
Total Population:	9,655	61,072	145,266
Average HH Income:	\$50,897	\$60,048	\$68,044

No Warranty Or Representation, Express Or Implied, Is Made As To The Accuracy Of The Information Contained Herein, And The Same Is Submitted Subject To Errors, Omissions, Change Of Price, Rental Or Other Conditions, Prior Sale, Lease Or Financing, Or Withdrawal Without Notice, And Of Any Special Listing Conditions Imposed By Our Principals No Warranties Or Representations Are Made As To The Condition Of The Property Or Any Hazards Contained Therein Are Any To Be Implied.



✉ **Keith Jones, CCIM, SIOR**  
O: +1 864 232 9040  
C: +1 864 275 8699  
keith@naiearlefurman.com

✉ **McNeil Epps, CCIM**  
O: +1 864 232 9040 x5956  
C: +1 803 473 0179  
mepps@naiearlefurman.com

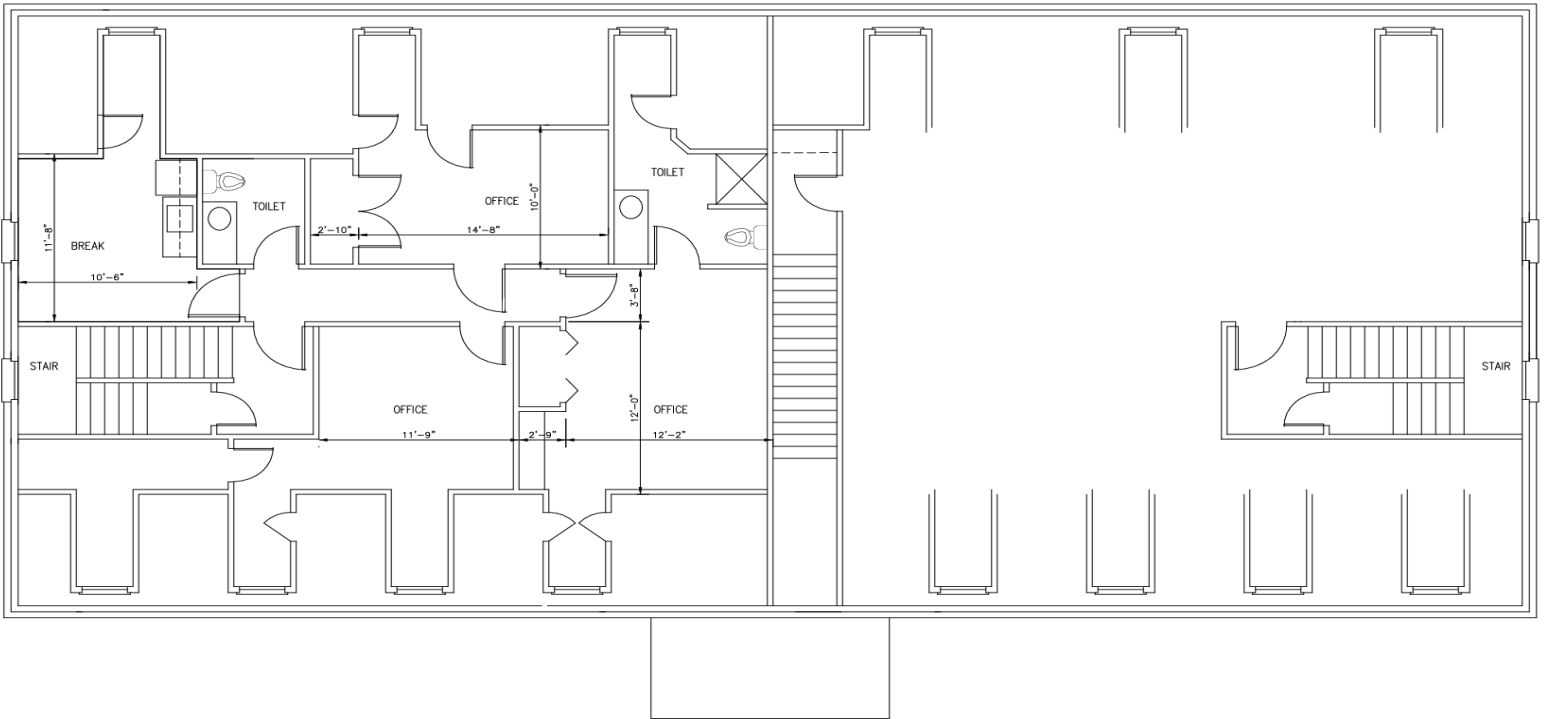
No Warranty Or Representation, Express Or Implied, Is Made As To The Accuracy Of The Information Contained Herein, And The Same Is Submitted Subject To Errors, Omissions, Change Of Price, Rental Or Other Conditions, Prior Sale, Lease Or Financing, Or Withdrawal Without Notice, And Of Any Special Listing Conditions Imposed By Our Principals No Warranties Or Representations Are Made As To The Condition Of The Property Or Any Hazards Contained Therein Are Any To Be Implied.

📍 **101 E Washington St**  
Greenville, SC 29601  
naiearlefurman.com

# FOR SUBLEASE

1 Caledon Court Greenville, SC 29615

## SUITE D



SECOND FLOOR PLAN

1/4" = 1'-0"

First Floor

✉ **Keith Jones, CCIM, SIOR**  
O: +1 864 232 9040  
C: +1 864 275 8699  
keith@naiearlefurman.com

✉ **McNeil Epps, CCIM**  
O: +1 864 232 9040 x5956  
C: +1 803 473 0179  
mepps@naiearlefurman.com

No Warranty Or Representation, Express Or Implied, Is Made As To The Accuracy Of The Information Contained Herein, And The Same Is Submitted Subject To Errors, Omissions, Change Of Price, Rental Or Other Conditions, Prior Sale, Lease Or Financing, Or Withdrawal Without Notice, And Of Any Special Listing Conditions Imposed By Our Principals. No Warranties Or Representations Are Made As To The Condition Of The Property Or Any Hazards Contained Therein As Any To Be Implied.

**NAI Earle Furman**