

FOR SALE

110 & 140 Spillman Court Travelers Rest, SC 29690



Office Pad Sites

- 2 office pad sites
- Up to 4,500 SF buildable
- Parking: 5 x 1,000 SF
- Zoned: C-2 City of Travelers Rest
- Located right off N. Poinsett Highway
- Sale price: Lot 110 - \$180,000 & Lot 140 - \$150,000

Demographics	1 Mile	3 Miles	5 Miles
Total Population:	1,378	13,922	35,683
Average HH Income:	\$62,115	\$63,655	\$60,808

No Warranty Or Representation, Express Or Implied, Is Made As To The Accuracy Of The Information Contained Herein, And The Same Is Submitted Subject To Errors, Omissions, Change Of Price, Rental Or Other Conditions, Prior Sale, Lease Or Financing, Or Withdrawal Without Notice, And Of Any Special Listing Conditions Imposed By Our Principals No Warranties Or Representations Are Made As To The Condition Of The Property Or Any Hazards Contained Therein Are Any To Be Implied.



✉ **Keith Jones, CCIM, SIOR**
 O: +1 864 232 9040
 C: +1 864 275 8699
 keith@naiearlefurman.com

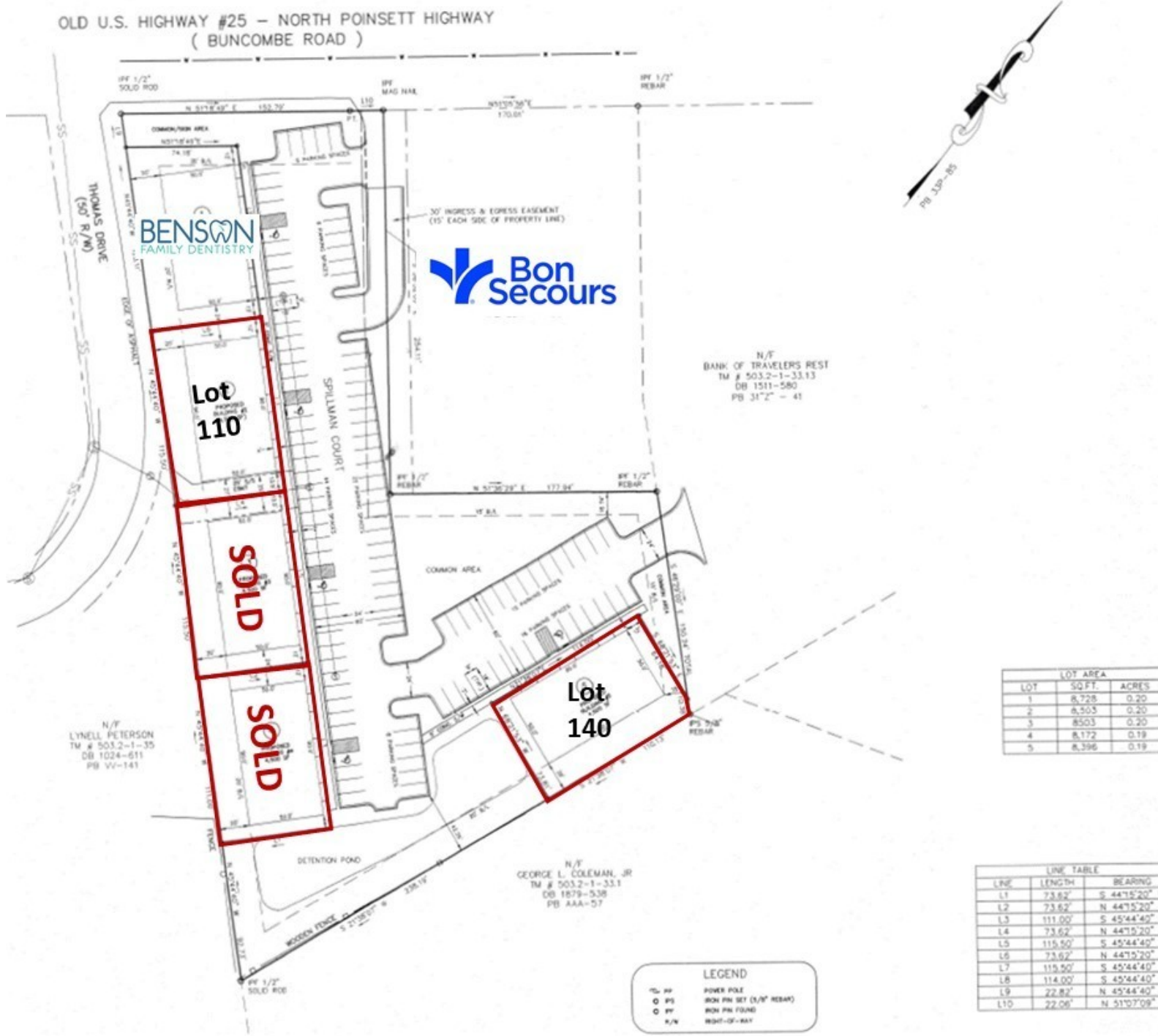
✉ **McNeil Epps, CCIM**
 O: +1 864 232 9040 x5956
 C: +1 803 473 0179
 mepps@naiearlefurman.com

No Warranty Or Representation, Express Or Implied, Is Made As To The Accuracy Of The Information Contained Herein, And The Same Is Submitted Subject To Errors, Omissions, Change Of Price, Rental Or Other Conditions, Prior Sale, Lease Or Financing, Or Withdrawal Without Notice, And Of Any Special Listing Conditions Imposed By Our Principals No Warranties Or Representations Are Made As To The Condition Of The Property Or Any Hazards Contained Therein Are Any To Be Implied.

📍 **101 E Washington St**
 Greenville, SC 29601
 naiearlefurman.com

FOR SALE

110 & 140 Spillman Court Travelers Rest, SC 29690



LOT AREA		
LOT	SQFT.	ACRES
1	8,728	0.20
2	8,503	0.20
3	8,503	0.20
4	8,172	0.19
5	8,396	0.19

LINE TABLE		
LINE	LENGTH	BEARING
L1	73.62'	S 44°15'20" W
L2	73.62'	N 44°15'20" E
L3	111.00'	S 45°44'40" E
L4	73.62'	N 44°15'20" E
L5	115.50'	S 45°44'40" E
L6	73.62'	N 44°15'20" E
L7	115.50'	S 45°44'40" E
L8	114.00'	S 45°44'40" E
L9	22.82'	N 45°44'40" W
L10	22.06'	N 51°07'09" E

LEGEND

- ⊖ PF POWER POLE
- PS IRON PIN SET (1/4" REBAR)
- RF IRON PIN FOUND
- N/A RIGHT-OF-WAY