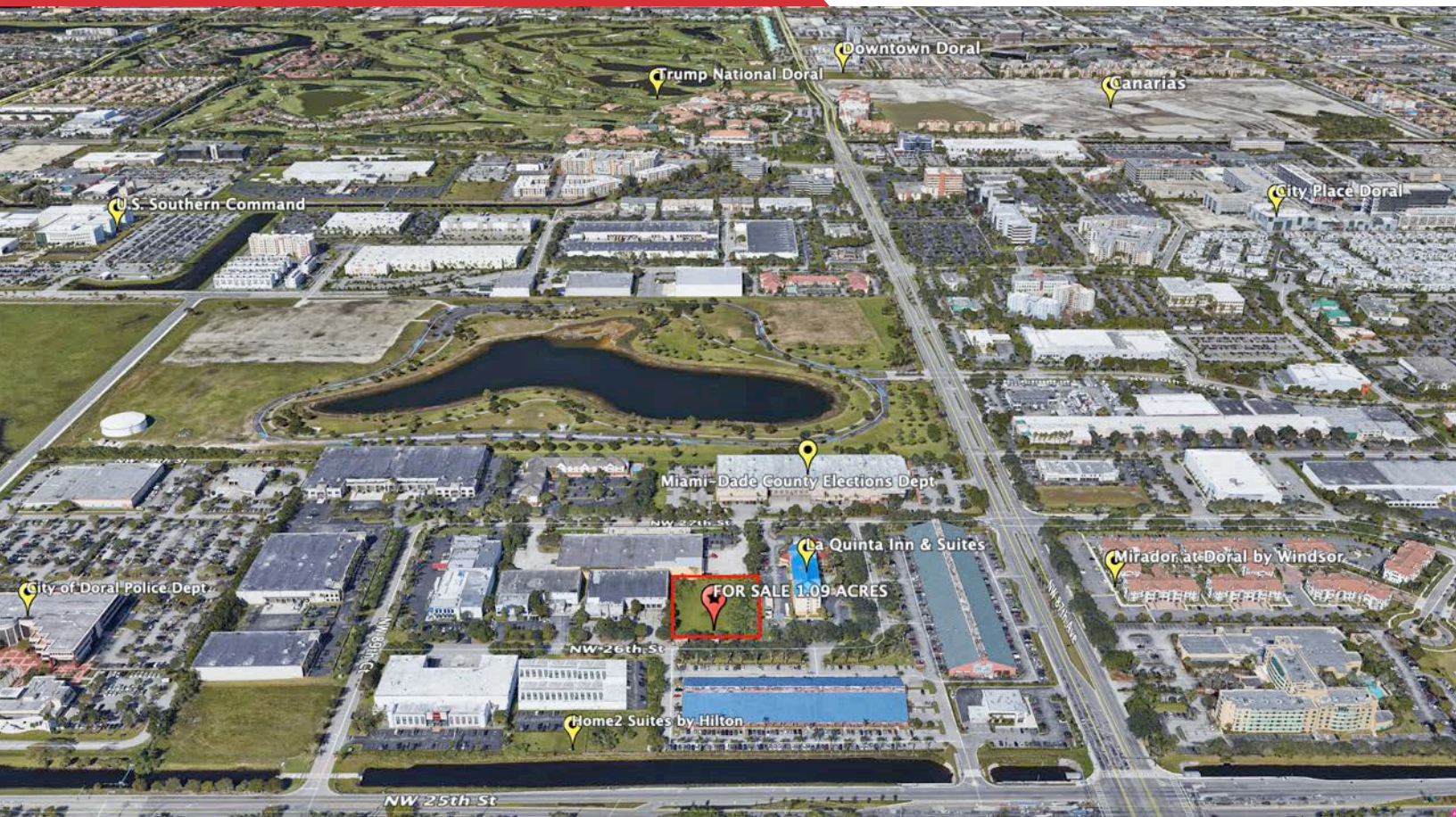


**FOR SALE**

**±1.09 ACRES VACANT LAND**

**MIAMI INTERNATIONAL PARKWAY**



## 8825 NW 26th Street - Doral, FL 33172

### Property Features

- Approximately 47,573 SF
- One of the last vacant lots within the City of Doral.
- Rectangular in shape.
- Zoned 7700 Industrial-Restricted.

### Location Features

- Closest intersection: NW 87th Avenue and NW 25th Street.
- Easy Access to SR 826 (via NW 25th Street); SR 836 (via NW 87th Avenue); Florida Turnpike and all major thoroughfares.
- Miami International Airport is located at 2.5 miles.
- Adjacent to La Quinta, Home 2 Suites, across from Westend Shopping Center and in close proximity to residential communities, hotels, malls, restaurants, banks, retail centers, office and industrial complexes.



**Gabriel Garcia-Menocal, SIOR**

+1 786 433 3148  
ggarcia-menocal@naimiami.com



**Lucia Custer**

+1 786 433 0308  
lcuster@naimiami.com

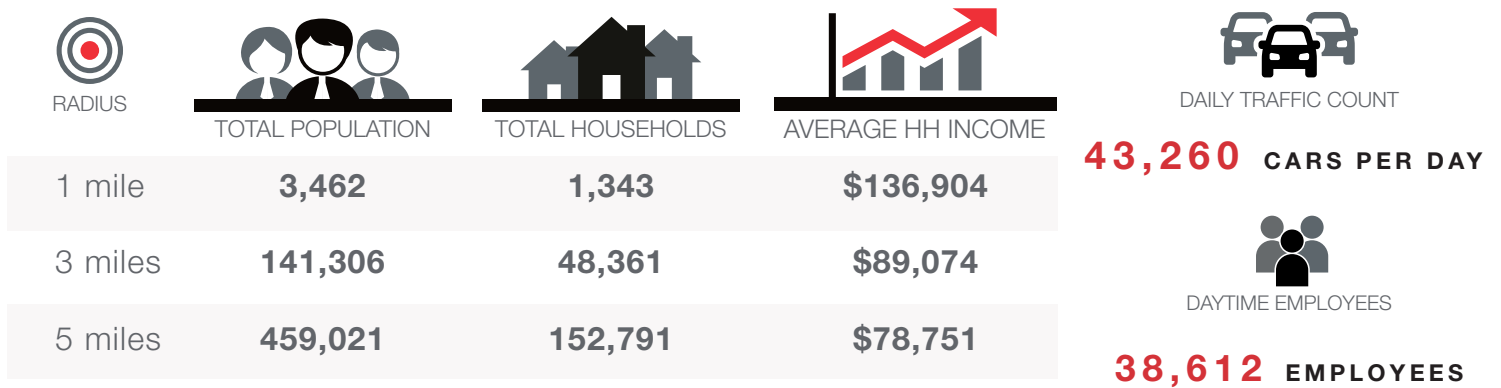
9655 South Dixie Hwy Suite 300  
Miami, Florida  
+1 305 938 4000

[naimiami.com](http://naimiami.com)



## Demographic Information

2025 SUMMARY PROJECTION



NO WARRANTY OR REPRESENTATION, EXPRESS OR IMPLIED, IS MADE AS TO THE ACCURACY OF THE INFORMATION CONTAINED HEREIN, AND THE SAME IS SUBMITTED SUBJECT TO ERRORS, OMISSIONS, CHANGE OF PRICE, RENTAL OR OTHER CONDITIONS, PRIOR SALE, LEASE OR FINANCING, OR WITHDRAWAL WITHOUT NOTICE, AND OF ANY SPECIAL LISTING CONDITIONS IMPOSED BY OUR PRINCIPALS. NO WARRANTIES OR REPRESENTATIONS ARE MADE AS TO THE CONDITION OF THE PROPERTY OR ANY HAZARDS CONTAINED THEREIN ARE ANY TO BE IMPLIED.

