

FOR LEASE

SHOPPES OF SOUTH ORANGE | 2205 S ORANGE AVENUE

7,103 SQUARE FEET AVAILABLE

RETAIL



NAIMiami

9655 SOUTH DIXIE HIGHWAY, SUITE 300
MIAMI, FL 33156 | 305.938.4000 | NAIMIAMI.COM

SHOPPES OF SOUTH ORANGE | 2205 S ORANGE AVENUE

7,103 SQUARE FEET AVAILABLE



PROPERTY OVERVIEW

- Built in 2017
- Excellent frontage on South Orange Ave
- Ample on-site and street parking
- Close Proximity to I-4 & Downtown
- Walking distance to Orlando Health Regional Medical Center

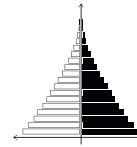
DEMOGRAPHICS



1 MILE

3 MILES

5 MILES

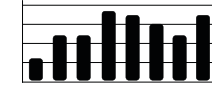


2020 POPULATION

10,021

118,964

312,955

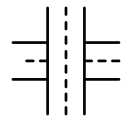


AVERAGE INCOME

\$91,702

\$71,969

\$69,327



TRAFFIC COUNT

**SOUTH
ORANGE AVE**

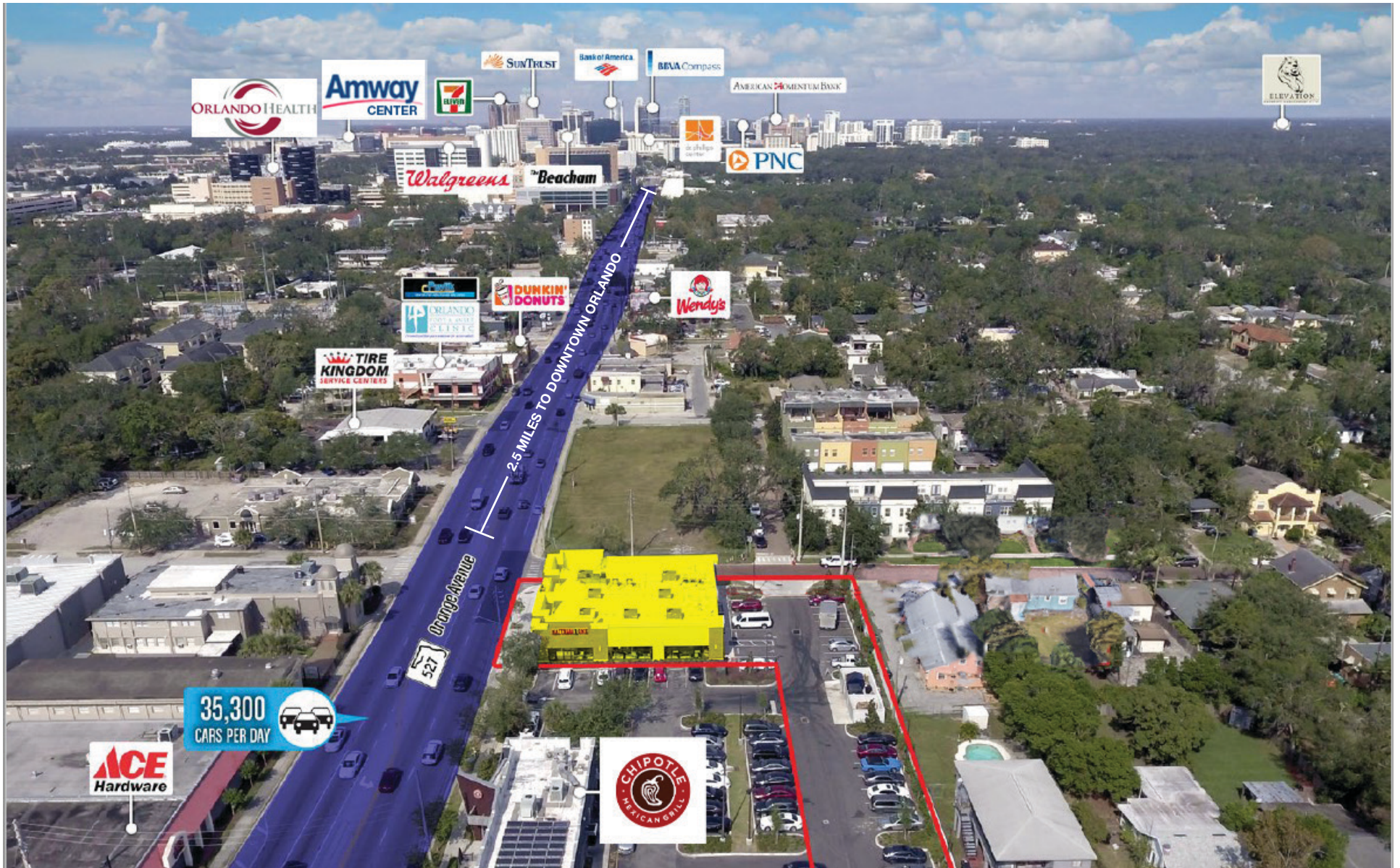
41,902
CARS PER DAY

JEREMY LARKIN
305.389.1832
jlarkin@naimiami.com

JOE GALLAHER
305.790.5454
jgallagher@naimiami.com

NAIMiami
9655 SOUTH DIXIE HIGHWAY, SUITE 300
MIAMI, FL 33156 | 305.938.4000 | NAIMIAMI.COM

RETAIL MAP | DOWNTOWN ORLANDO

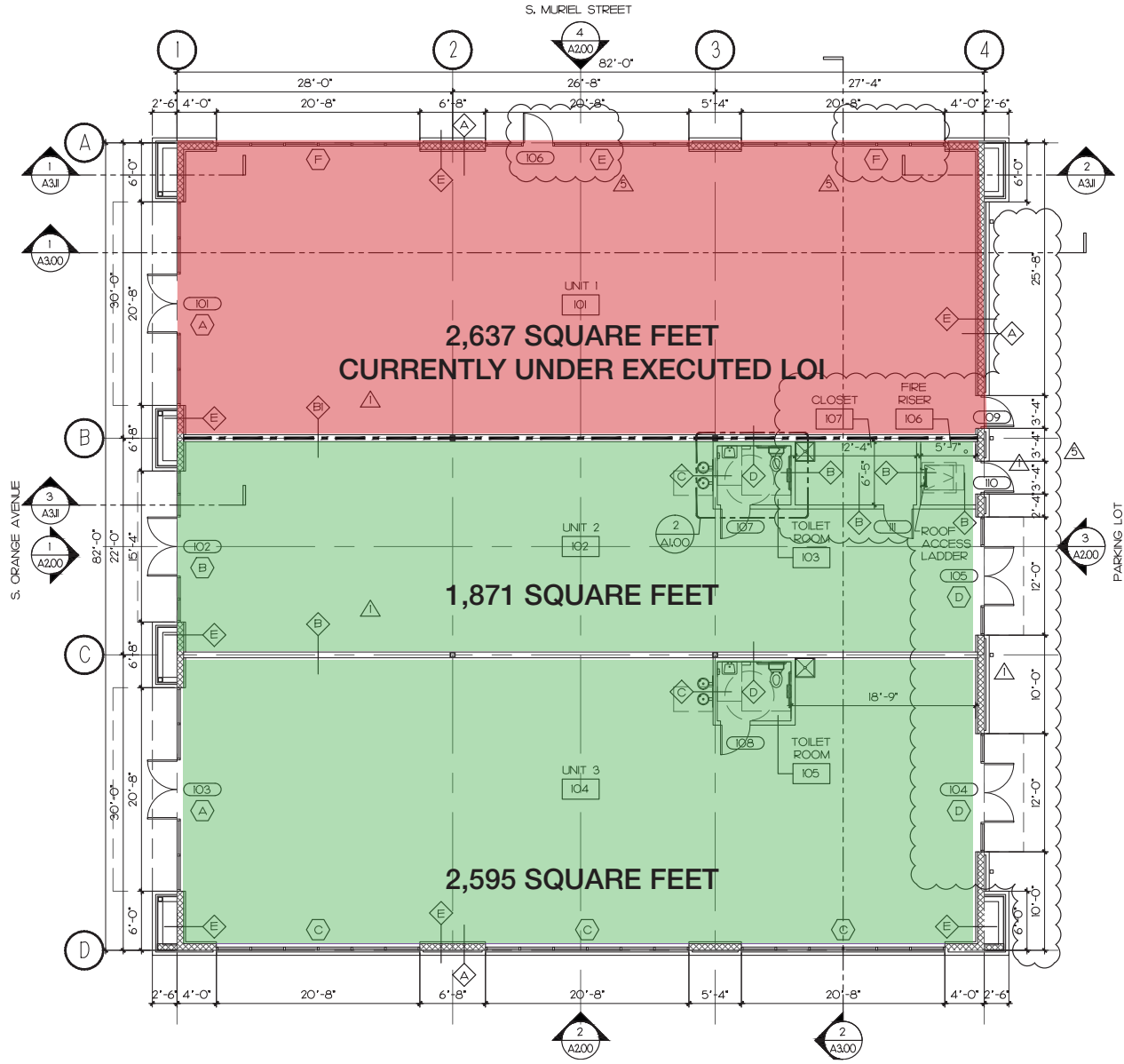


JEREMY LARKIN
305.389.1832
jlarkin@naimiami.com

JOE GALLAHER
305.790.5454
jgallaher@naimiami.com

NAMiami
9655 SOUTH DIXIE HIGHWAY, SUITE 300
MIAMI, FL 33156 | 305.938.4000 | NAIMIAMI.COM

SITE PLAN | SHOPPES OF SOUTH ORANGE



JEREMY LARKIN
 305.389.1832
 jlarkin@naimiami.com

JOE GALLAHER
 305.790.5454
 jgallaher@naimiami.com

NAIMiami
 9655 SOUTH DIXIE HIGHWAY, SUITE 300
 MIAMI, FL 33156 | 305.938.4000 | NAIMIAMI.COM