

FOR LEASE

OFFICE

1981 NW 88th Court, Doral, FL 33172 | 2,065 SF

NAMiami
COMMERCIAL REAL ESTATE SERVICES, WORLDWIDE

MEET

1981 NW 88TH CT



2,065 SF | DORAL AREA | SHARED



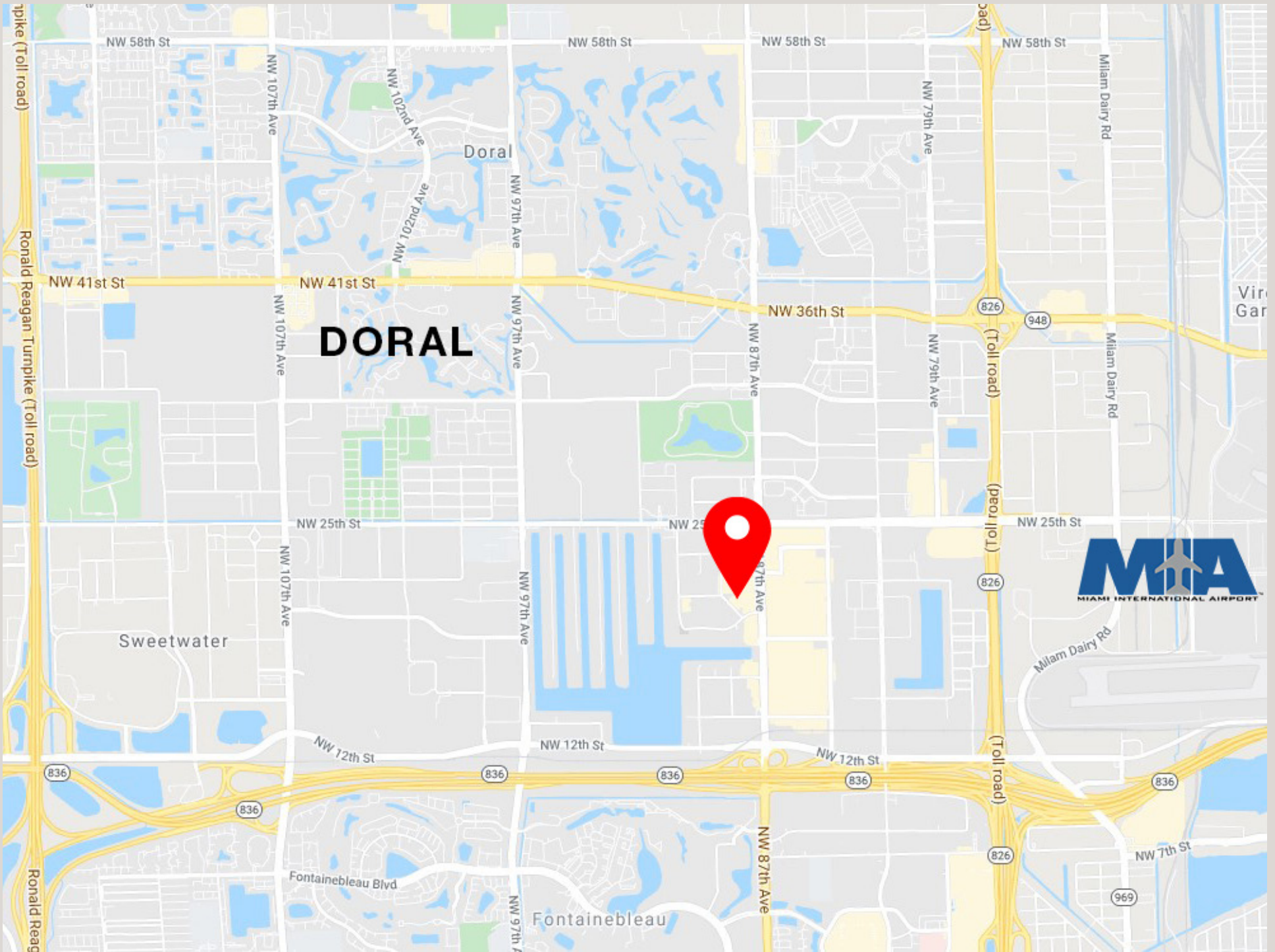
FEATURES

PROPERTY

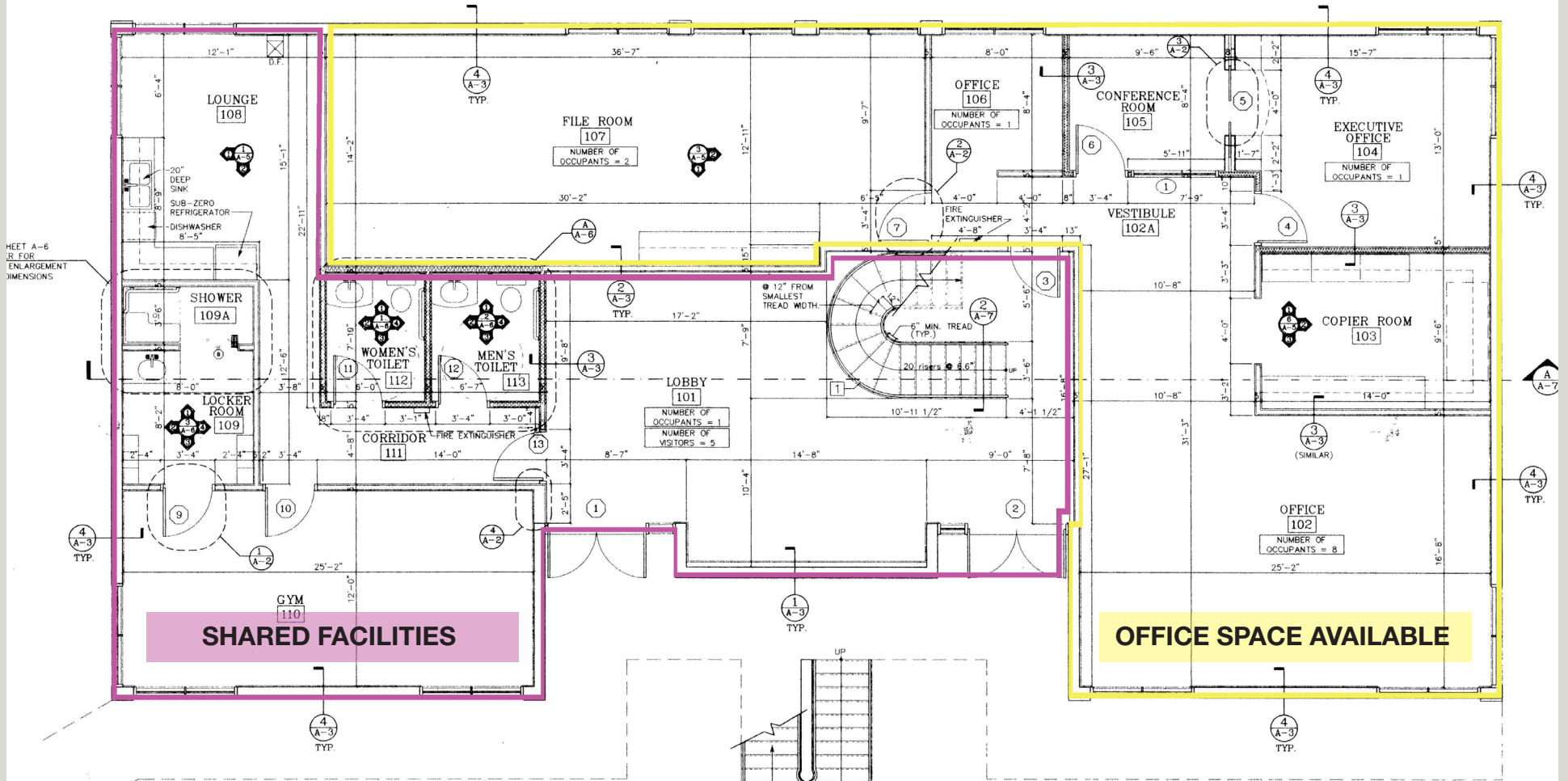
- Office space with shared facilities in the Heart of Doral.
- Shared facilities area includes Reception area Kitchen/Lounge, Gym with Shower/Locker Room.
- Private areas include Executive office, Conference Room, Copier Room, Private Office, File Room/Open Office area, Additional Office space with included cubicles/furniture.

PRICE : \$23.50 Per Square Foot (Full Service)

TOTAL SF : 2,065 Square Foot



FLOORPLAN



NOTE: ALL EXTERIOR WALLS AND WINDOWS ARE EXISTING TO REMAIN.
 ALL NEW WORK LIMITED TO THE INTERIOR SPACE OF EXISTING BUILDING.
 EXISTING SQ. FT. OF FIRST FLOOR: 3052.5
 EXISTING SQ. FT. OF SECOND FLOOR: 3052.5
 TOTAL EXISTING SQ. FT.: 6105.0

▲ INTERIOR ALTERATIONS SHALL COMPLY TO ALL APPLICABLE REQUIREMENTS STATED IN THE 1994 FLORIDA ACCESSIBILITY CODE FOR BUILDING CONSTRUCTION OF SECTION "4.16 ALTERATIONS", "4.19 BARRIER REMOVAL", "4.22 TOILET ROOM", AND "4.21 SHOWER"
 ▲ SEE SHEET A-6 FOR TOILET ROOM ENLARGEMENT WITH DIMENSIONS

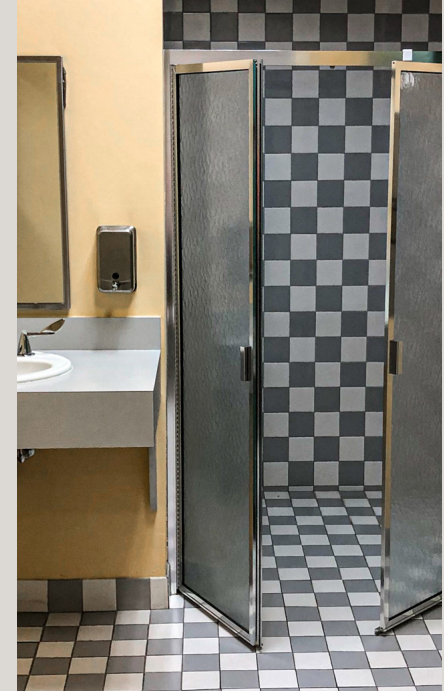
FIRST FLOOR – INTERIOR RENOVATION PLAN

1/4"



PINK = COMMON AREA
YELLOW = PRIVATE AREA

FACILITIES



PRIVATE AREA





NO WARRANTY OR REPRESENTATION, EXPRESS OR IMPLIED, IS MADE AS TO THE ACCURACY OF THE INFORMATION CONTAINED HEREIN, AND THE SAME IS SUBMITTED SUBJECT TO ERRORS, OMISSIONS, CHANGE OF PRICE, RENTAL OR OTHER CONDITIONS, PRIOR SALE, LEASE OR FINANCING, OR WITHDRAWAL WITHOUT NOTICE, AND OF ANY SPECIAL LISTING CONDITIONS IMPOSED BY OUR PRINCIPALS NO WARRANTIES OR REPRESENTATIONS ARE MADE AS TO THE CONDITION OF THE PROPERTY OR ANY HAZARDS CONTAINED THEREIN ARE ANY TO BE IMPLIED.

JEREMY LARKIN

JLARKIN@NAIMIAMI.COM CELL: 305 389 1832

DAVID OXIOS

DOXIOS@NAIMIAMI.COM CELL: 305 775 2224