

FOR SALE

50 Directors Drive Greenville, SC 29615

NAI Earle Furman

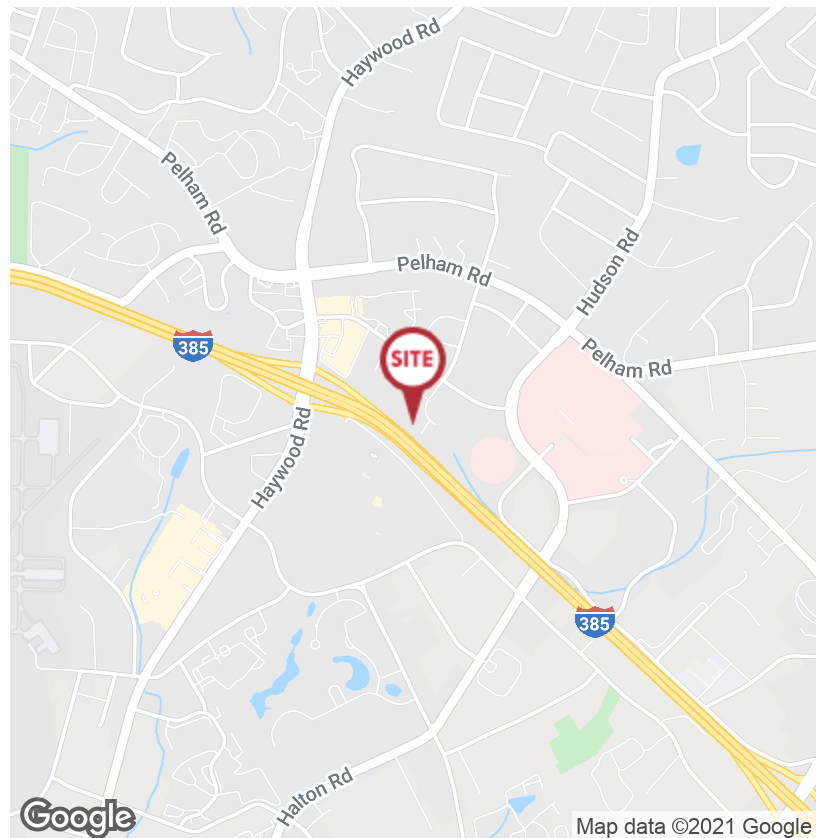
\$1,750,000



Sale Price Reduced to: \$1,750,000

Office | 15,600 SF

- ±1.766 acres
- Zoned: C-2 City of Greenville
- 76 parking spaces
- Building can be demised to create two independent spaces
- Adjacent to Prisma Health Patewood Campus
- Located off Haywood Road & I-385
- I-385 visibility and frontage
- Sale price: \$2,150,000 Reduced to: \$1,750,000



Bill Sims

O: +1 864 232 9040
C: +1 864 415 0842

bsims@naiearlefurman.com



Will Freeman

O: +1 864 232 9040
C: +1 803 528 7447

wfreeman@naiearlefurman.com

No Warranty Or Representation, Express Or Implied, Is Made As To The Accuracy Of The Information Contained Herein, And The Same Is Submitted Subject To Errors, Omissions, Change Of Price, Rental Or Other Conditions, Prior Sale, Lease Or Financing, Or Withdrawal Without Notice And Of Any Special Listing Conditions Imposed By Our Principals. No Warranties Or Representations Are Made As To The Condition Of The Property Or Any Hazards Contained Therein Are Any To Be Implied.

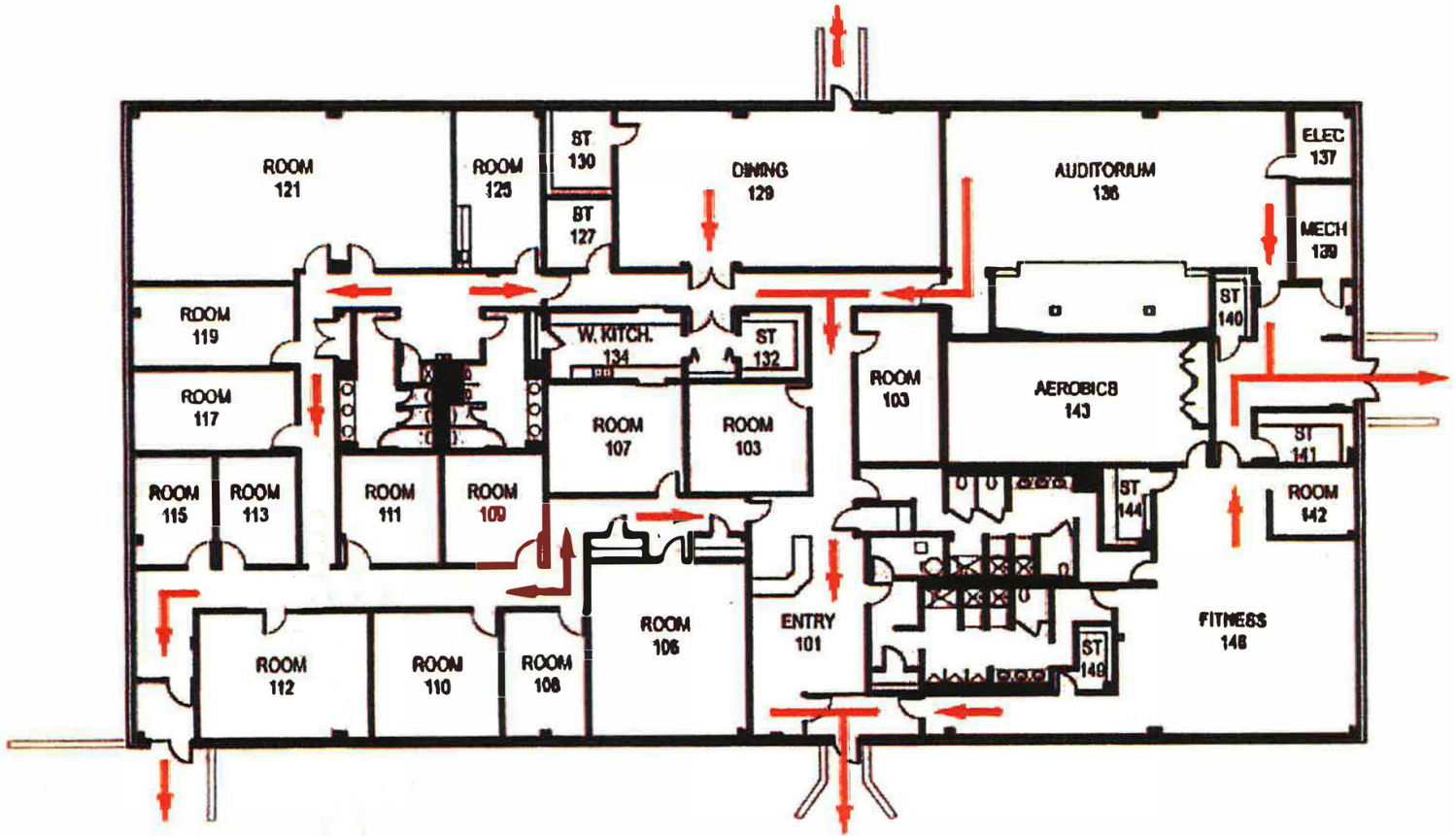


101 E Washington St
Greenville, SC 29601
naiearlefurman.com

Map data ©2021 Google

FOR SALE

50 Directors Drive Greenville, SC 29615



Bill Sims

O: +1 864 232 9040

C: +1 864 415 0842

bsims@naiearlefurman.com



Will Freeman

O: +1 864 232 9040

C: +1 803 528 7447

wfreeman@naiearlefurman.com

No Warranty Or Representation, Express Or Implied, Is Made As To The Accuracy Of The Information Contained Herein, And The Same Is Submitted Subject To Errors, Omissions, Change Of Price, Partial Or Other Conditions, Prior Sale, Lease Or Financing, Or Withdrawal Without Notice And Of Any Special Listing Conditions Imposed By Our Principals. No Warranties Or Representations Are Made As To The Condition Of The Property Or Any Hazards Contained Therein Are Any To Be Implied.



101 E Washington St

Greenville, SC 29601

naiearlefurman.com