

- Subject Property
- Available Sites
- Park Entrance
- Main Entrance

**SITE 18A • OLD GROVE ROAD  
PIEDMONT, SOUTH CAROLINA**

- ▶ ±6 Total acres
- ▶ Multiple park entrances / exits
- ▶ Progressive surrounding community with a skilled workforce
- ▶ Multi-lane parkway road system in place
- ▶ Ideal location along the I-85 corridor between Atlanta & Charlotte
- ▶ Contact brokers for pricing

- ▶ Utilities Available
  - Power - Duke Energy
  - Water - Greenville Water
  - Gas - Piedmont Natural Gas
  - Sewer - Gantt Sewer Department & Metropolitan Sewer District

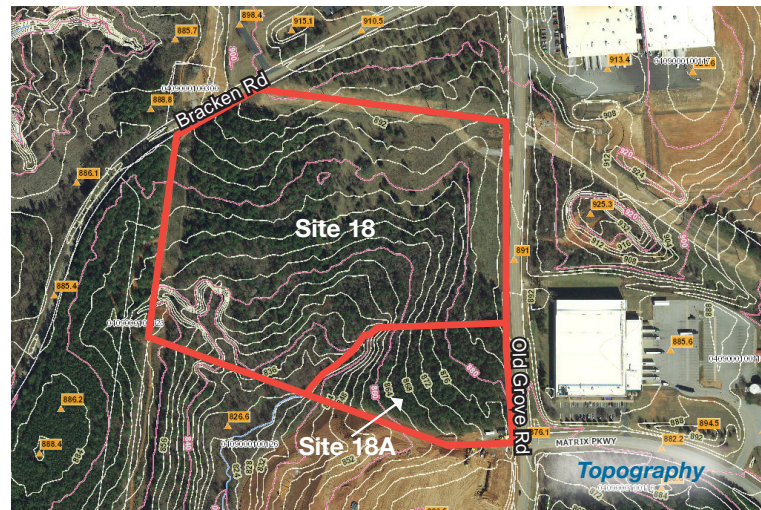
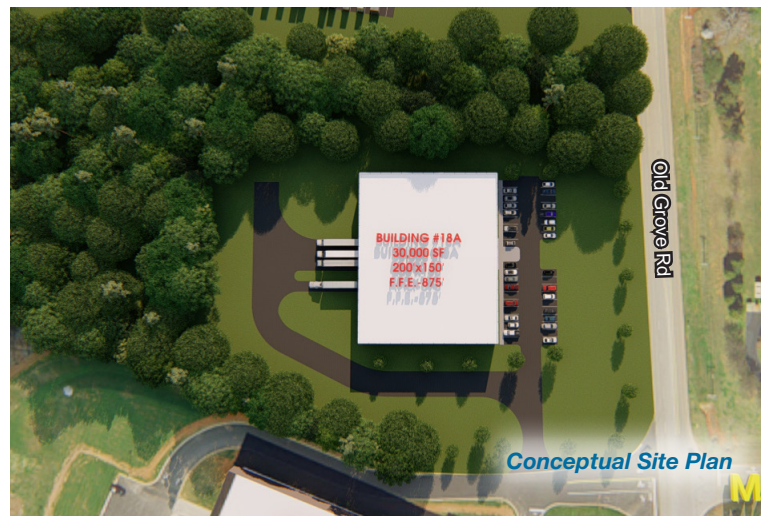
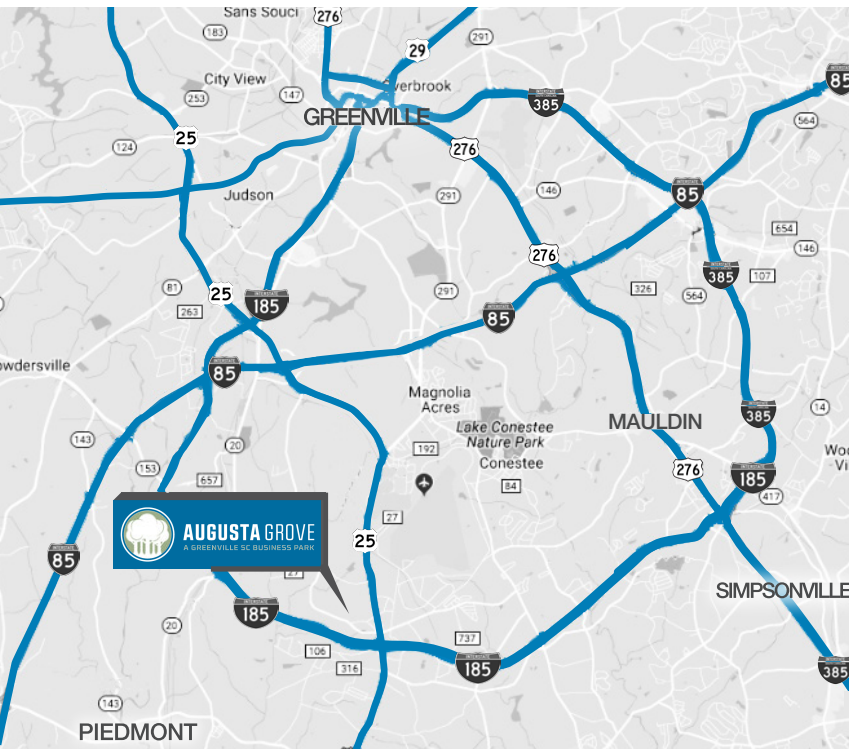
[CLICK HERE TO VIEW VIDEO](#)

FOR MORE INFORMATION

**Grice Hunt, SIOR**  
864 678 5935 | grice@naief.com

**Clay Williams**  
864 678 5938 | clay@naief.com

**NA Earle Furman**  
101 E. WASHINGTON ST, STE 400  
GREENVILLE, SC 29601  
NAIEARLEFURMAN.COM



### Driving Distances

I-85	±4 miles	SC Inland Port	±22 miles
Greenville, SC	±9 miles	I-26	±39 miles
I-385	±11 miles	Charlotte, NC	±106 miles
GSP Airport	±16 miles	Atlanta, GA	±148 miles
BMW Facility	±18 miles		

Augusta Grove is the premier industrial and business park in Upstate, South Carolina. Strategically located in southern Greenville County's "Hub of Industry" along the I-85 corridor halfway between Atlanta and Charlotte, Augusta Grove offers world-class industry leaders like GE Aviation, KI Logistics, Magna and JTEKT all the advantages of a master-planned business park with convenient proximity to major interstates.

FRONT VIEW



REAR VIEW



### FOR MORE INFORMATION

**Grice Hunt, SIOR**

864 678 5935 | grice@naief.com

**Clay Williams**

864 678 5938 | clay@naief.com

**NA Earle Furman**  
 101 E. WASHINGTON ST, STE 400  
 GREENVILLE, SC 29601  
 NAIEARLEFURMAN.COM