

For Sale

Land

81.49 Acres



Old Virginia Road

Pocomoke City, Maryland 21851

Property Highlights

- 1.07-81.49 acres available
- Water/sewer available
- \$10,000 per acre

Property Description

Pocomoke City Land Opportunities- Water/sewer available. 81.49 +/- acres available.

Parcel 75: 6.25 acres/Zoned B-2.

Parcel 99: 1.07 acres/Zoned B-2.

Parcel 210: 74.17 acres/Zoned M-1

OFFERING SUMMARY

Sale Price	\$10,000 / Acre
Lot Size	81.49 Acres

DEMOGRAPHICS

Stats	Population	Avg. HH Income
5 Miles	6,454	\$47,816
10 Miles	17,268	\$53,274
20 Miles	81,491	\$60,067

For more information

Meredith Mears

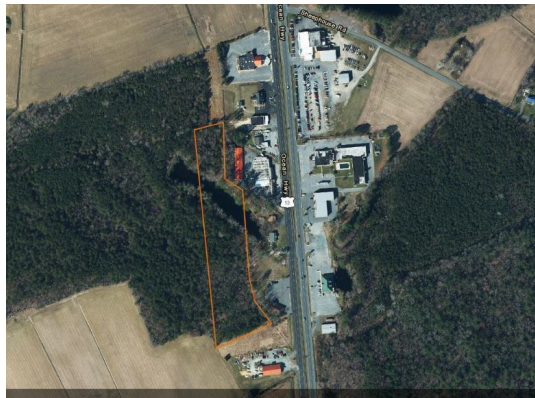
O: 410 543 5115

merry@naicoastal.com

For Sale

Land

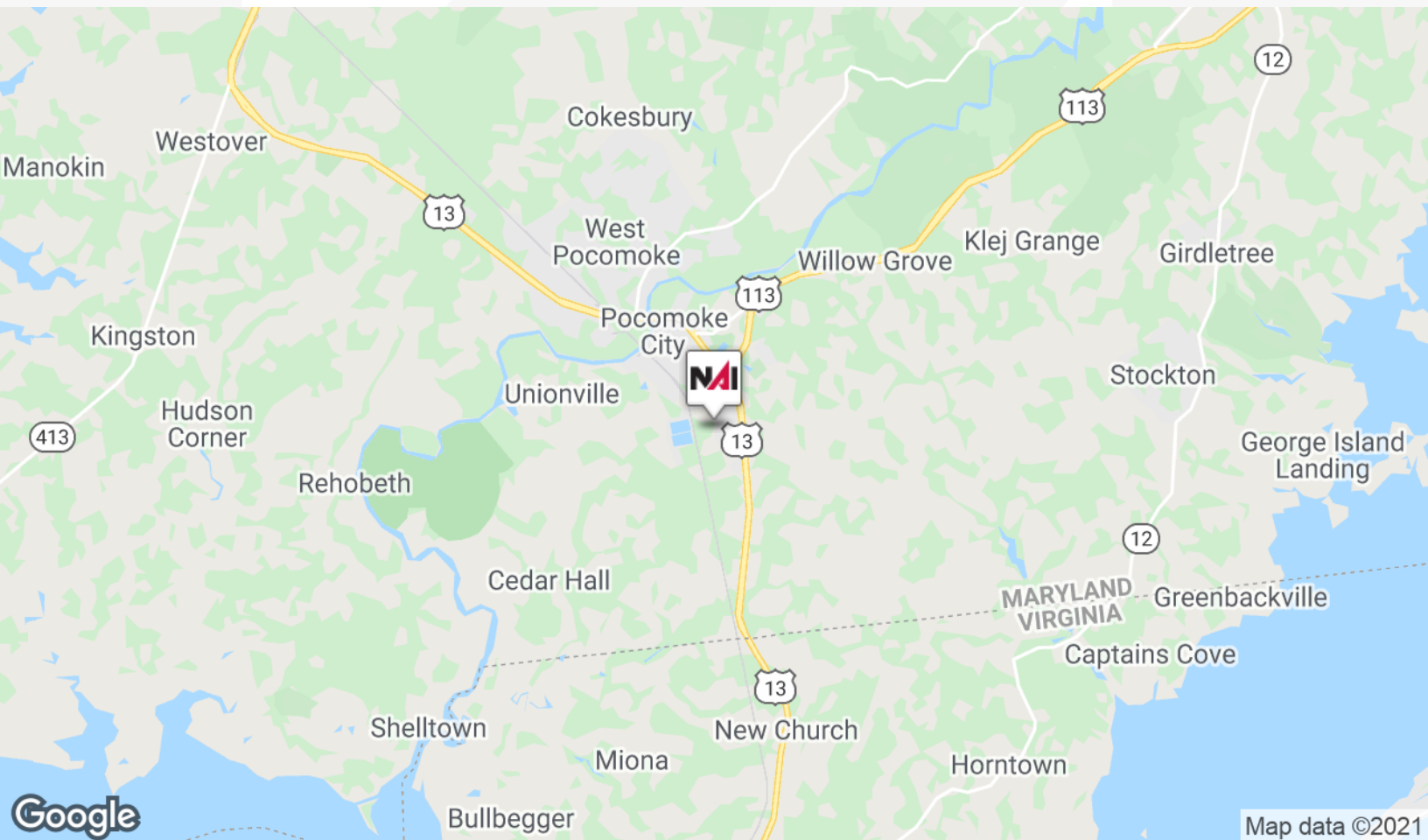
81.49 Acres | \$10,000 / AC



For Sale

Land

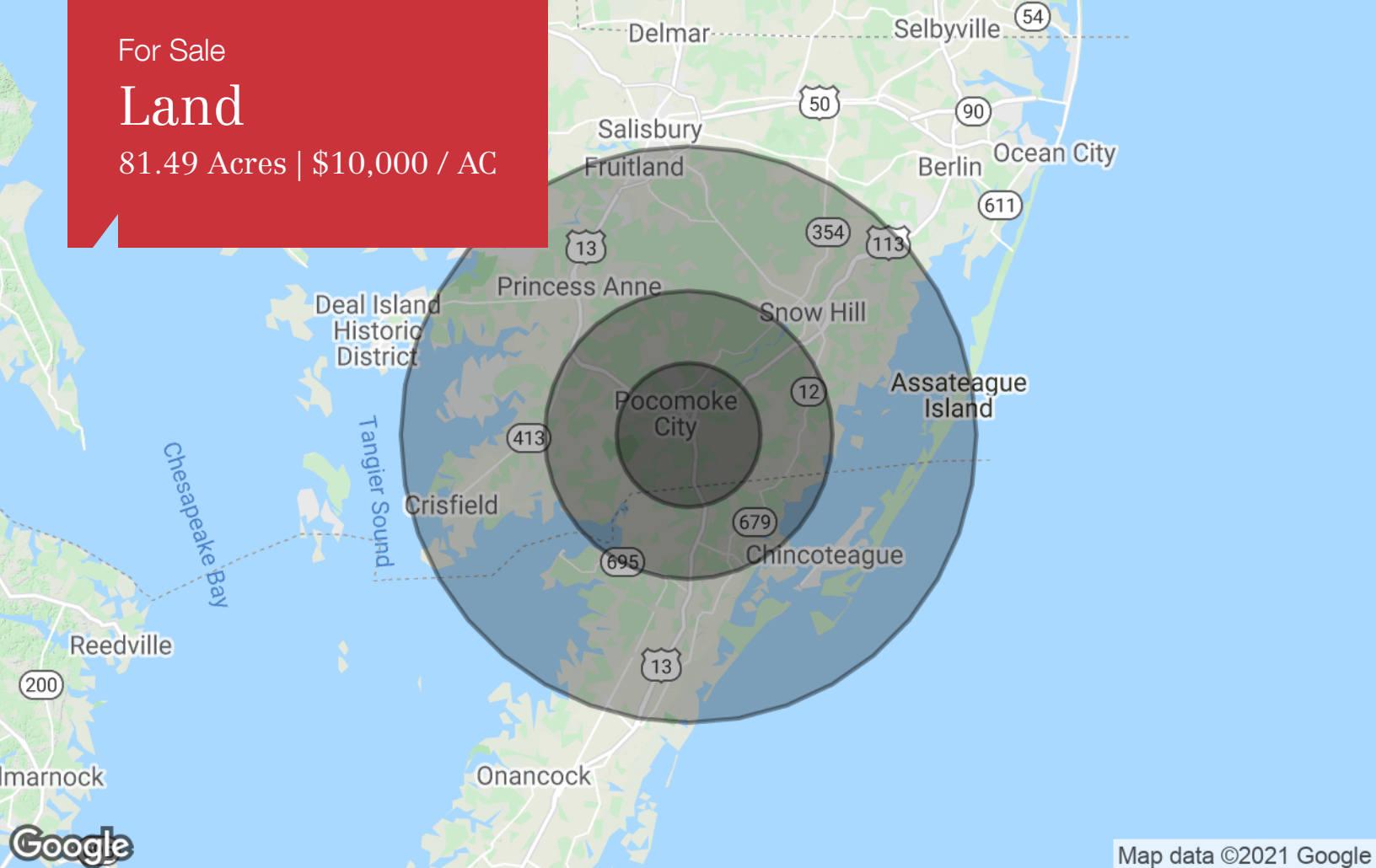
81.49 Acres | \$10,000 / AC



For Sale

Land

81.49 Acres | \$10,000 / AC



Map data ©2021 Google

Population	5 Miles	10 Miles	20 Miles
TOTAL POPULATION	6,454	17,268	81,491
MEDIAN AGE	38.2	40.3	38.3
MEDIAN AGE (MALE)	32.0	36.2	36.3
MEDIAN AGE (FEMALE)	41.7	42.7	39.9
Households & Income	5 Miles	10 Miles	20 Miles
TOTAL HOUSEHOLDS	2,624	6,560	29,280
# OF PERSONS PER HH	2.5	2.6	2.8
AVERAGE HH INCOME	\$47,816	\$53,274	\$60,067
AVERAGE HOUSE VALUE	\$241,616	\$217,051	\$227,552
Race	5 Miles	10 Miles	20 Miles
% WHITE	52.2%	59.6%	64.9%
% BLACK	46.6%	38.6%	32.4%
% ASIAN	1.0%	1.0%	1.1%
% HAWAIIAN	0.0%	0.0%	0.0%
% INDIAN	0.1%	0.4%	0.3%
% OTHER	0.0%	0.3%	1.2%
Ethnicity	5 Miles	10 Miles	20 Miles
% HISPANIC	0.2%	1.1%	3.3%

* Demographic data derived from 2010 US Census

For Sale

Land

81.49 Acres | \$10,000 / AC



Meredith Mears

Principal | Advisor

410.543.5115 tel
443.944.4464 cell
merry@naicoastal.com

Memberships & Affiliations

Leadership Maryland
Board of Directors
Lifetime Member

Maryland Capital Enterprises
Board of Directors

Atlantic General Hospital
Foundation Member

Top 100 Women in Maryland
Daily Record, 2020

Education

Salisbury University
B.S. Business Administration
Concentration: Marketing
2001

Professional Background

Meredith Mears is widely known as a business, economic development and commercial real estate professional. For more than 20 years, Mears has successfully led companies, governments and communities through change, solidifying her position as a heavily experienced, trusted and reputable resource.

Mears presents her clients with a distinctive combination of skill, resources and relationships, thereby creating results that drive businesses and communities forward.

As a strategic leadership and project specific consultant that works with both public and private sectors, Mears has worked with Counties and statewide agencies, as well as small and large companies operating across the globe.

As a licensed commercial real estate Advisor, Mears has closed large-scale corporate tenant leases for government properties as well as multi-million dollar investment property transactions. Her real estate affiliation has collectively brokered over 400 commercial real estate transactions, and has participated in a sales volume exceeding \$500 million in brokerage and development deals.

Mears remains very active in her community, serving on the Boards of Leadership Maryland, Atlantic General Hospital and Maryland Capital Enterprises. In 2020, she was named a Top 100 Woman in the state of Maryland by The Daily Record for her contributions in business, community and mentoring. Mears is a graduate of Salisbury University and lives in Salisbury, Maryland with her husband, Jon and son, Gabe.