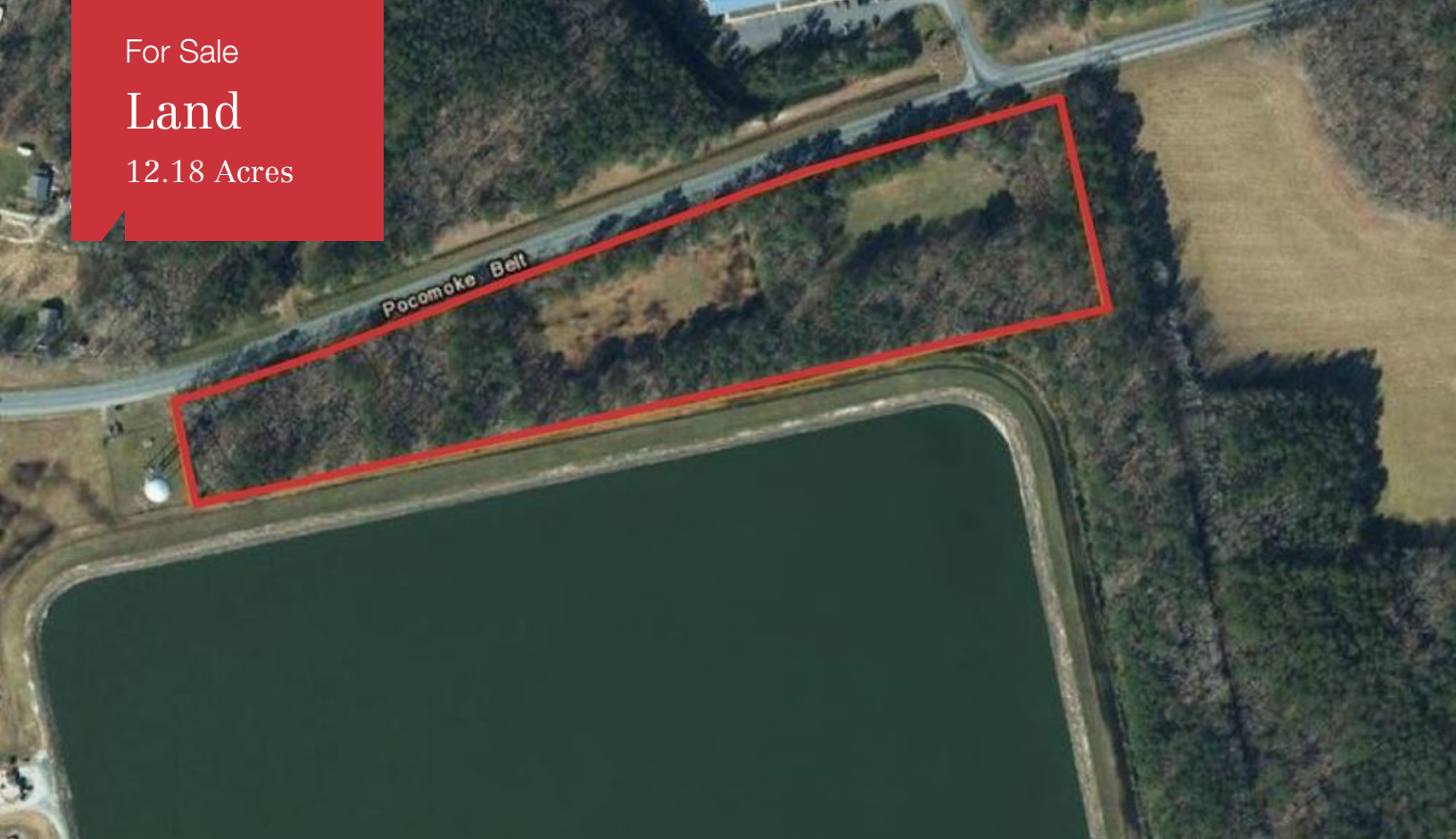


For Sale

Land

12.18 Acres



Pocomoke Beltway

Pocomoke City, Maryland 21851

Property Highlights

- 3.0-12.18 Industrial acres available
- Water/Sewer available
- \$10,000 per acre
- Zoned M-1/Enterprise zone

Property Description

Pocomoke City Industrial Tract Opportunities- Water/sewer available. 12.18+/- acres available. Zoned M-1, Light Industrial District. Enterprise zone.

Lot 1A- 5.18 acres

Lot 1B- 3.0 acres

Lot 1C- 4 acres

OFFERING SUMMARY

Sale Price	\$10,000 / Acre
Lot Size	12.18 Acres

DEMOGRAPHICS

Stats	Population	Avg. HH Income
5 Miles	6,729	\$47,213
10 Miles	18,488	\$52,701
20 Miles	83,521	\$60,178

For more information

Meredith Mears

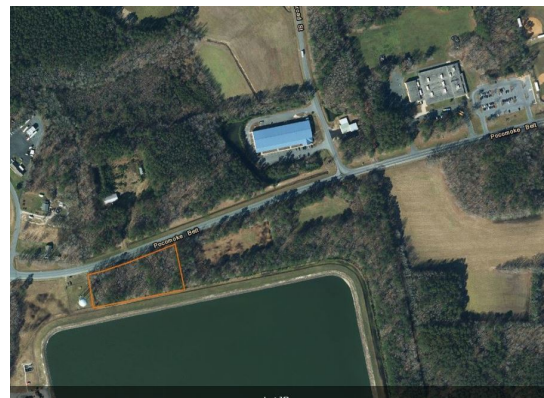
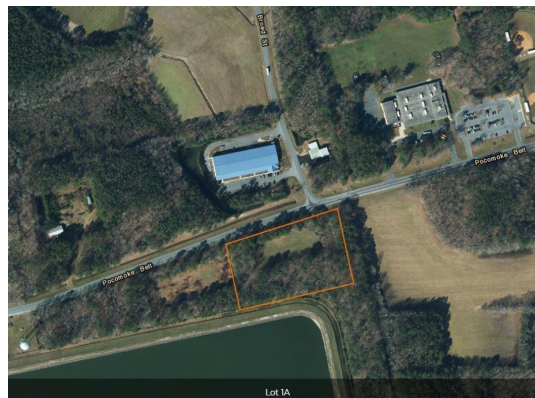
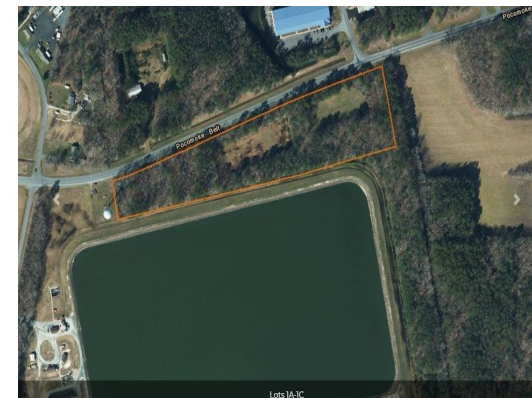
O: 410 543 5115

merry@naicoastal.com

For Sale

Land

12.18 Acres | \$10,000 / AC



For Sale

Land

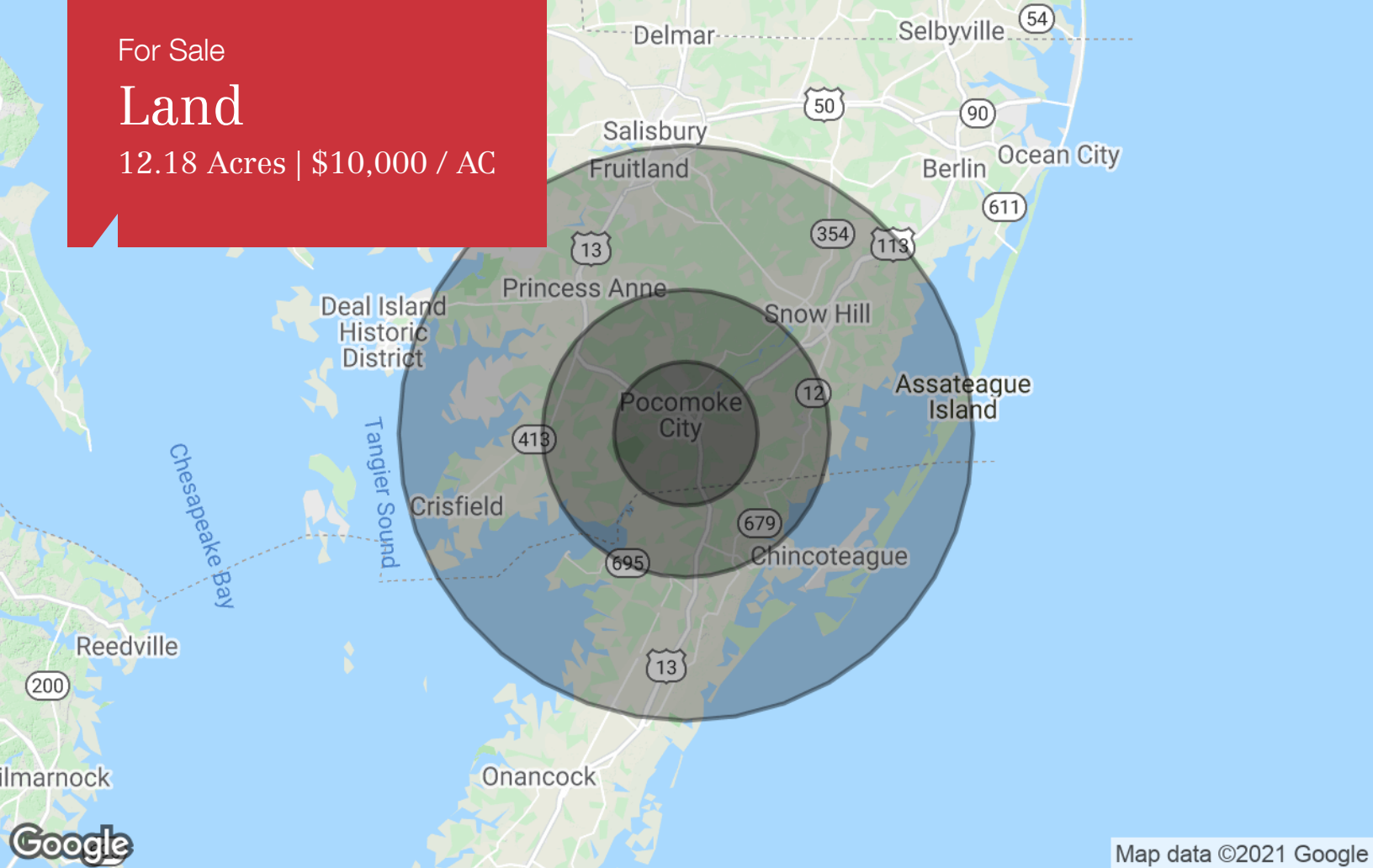
12.18 Acres | \$10,000 / AC



For Sale

Land

12.18 Acres | \$10,000 / AC



Map data ©2021 Google

	5 Miles	10 Miles	20 Miles
Population			
TOTAL POPULATION	6,729	18,488	83,521
MEDIAN AGE	38.1	39.3	38.2
MEDIAN AGE (MALE)	31.8	35.7	36.2
MEDIAN AGE (FEMALE)	41.6	41.9	39.7
Households & Income			
TOTAL HOUSEHOLDS	2,735	6,649	30,195
# OF PERSONS PER HH	2.5	2.8	2.8
AVERAGE HH INCOME	\$47,213	\$52,701	\$60,178
AVERAGE HOUSE VALUE	\$244,149	\$216,171	\$228,712
Race			
% WHITE	51.5%	57.1%	65.6%
% BLACK	47.4%	40.9%	31.7%
% ASIAN	1.0%	1.0%	1.1%
% HAWAIIAN	0.0%	0.0%	0.0%
% INDIAN	0.1%	0.4%	0.3%
% OTHER	0.0%	0.5%	1.2%
Ethnicity			
% HISPANIC	0.2%	1.3%	3.3%

* Demographic data derived from 2010 US Census

For Sale

Land

12.18 Acres | \$10,000 / AC



Meredith Mears

Principal | Advisor

410.543.5115 tel
443.944.4464 cell
merry@naicoastal.com

Memberships & Affiliations

Leadership Maryland
Board of Directors
Lifetime Member

Maryland Capital Enterprises
Board of Directors

Atlantic General Hospital
Foundation Member

Top 100 Women in Maryland
Daily Record, 2020

Education

Salisbury University
B.S. Business Administration
Concentration: Marketing
2001

Professional Background

Meredith Mears is widely known as a business, economic development and commercial real estate professional. For more than 20 years, Mears has successfully led companies, governments and communities through change, solidifying her position as a heavily experienced, trusted and reputable resource.

Mears presents her clients with a distinctive combination of skill, resources and relationships, thereby creating results that drive businesses and communities forward.

As a strategic leadership and project specific consultant that works with both public and private sectors, Mears has worked with Counties and statewide agencies, as well as small and large companies operating across the globe.

As a licensed commercial real estate Advisor, Mears has closed large-scale corporate tenant leases for government properties as well as multi-million dollar investment property transactions. Her real estate affiliation has collectively brokered over 400 commercial real estate transactions, and has participated in a sales volume exceeding \$500 million in brokerage and development deals.

Mears remains very active in her community, serving on the Boards of Leadership Maryland, Atlantic General Hospital and Maryland Capital Enterprises. In 2020, she was named a Top 100 Woman in the state of Maryland by The Daily Record for her contributions in business, community and mentoring. Mears is a graduate of Salisbury University and lives in Salisbury, Maryland with her husband, Jon and son, Gabe.