

# FOR SALE

Greenwood Indoor Storage

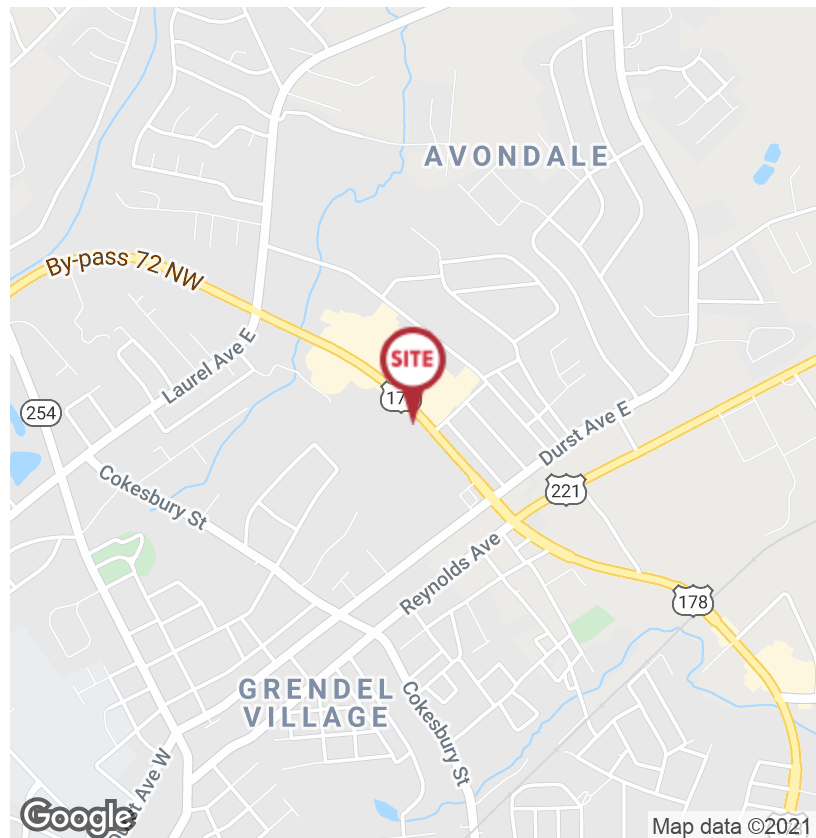
**NAI** Earle Furman

**\$2,500,000**



## Value-Add Investment Property | Greenwood

- ±57,840 SF Indoor storage facility
- Value-add investment property currently operating as: +/-16,275 SF of existing self-storage and +/-41,565 of leased warehouse space
- +/- 5.02 Acre site
- Well located on a major thoroughfare in Greenwood
- +/-1 mile from Lander University
- Traffic Count: 22,300 VPD
- Contact Broker for additional financials
- Asking Price: \$2,500,000



**Chris Harrison**

O: +1 864 678 5949

C: +1 864 354 9881

charrison@naiearlefurman.com

No Warranty Or Representation, Express Or Implied, Is Made As To The Accuracy Of The Information Contained Herein, And The Same Is Submitted Subject To Errors, Omissions, Change Of Price, Rental Or Other Conditions, Prior Sale, Lease Or Financing, Or Withdrawal Without Notice, And Of Any Special Listing Conditions Imposed By Our Principals No Warranties Or Rep-resentations Are Made As To The Condition Of The Property Or Any Hazards Contained Therein Are Any To Be Implied.



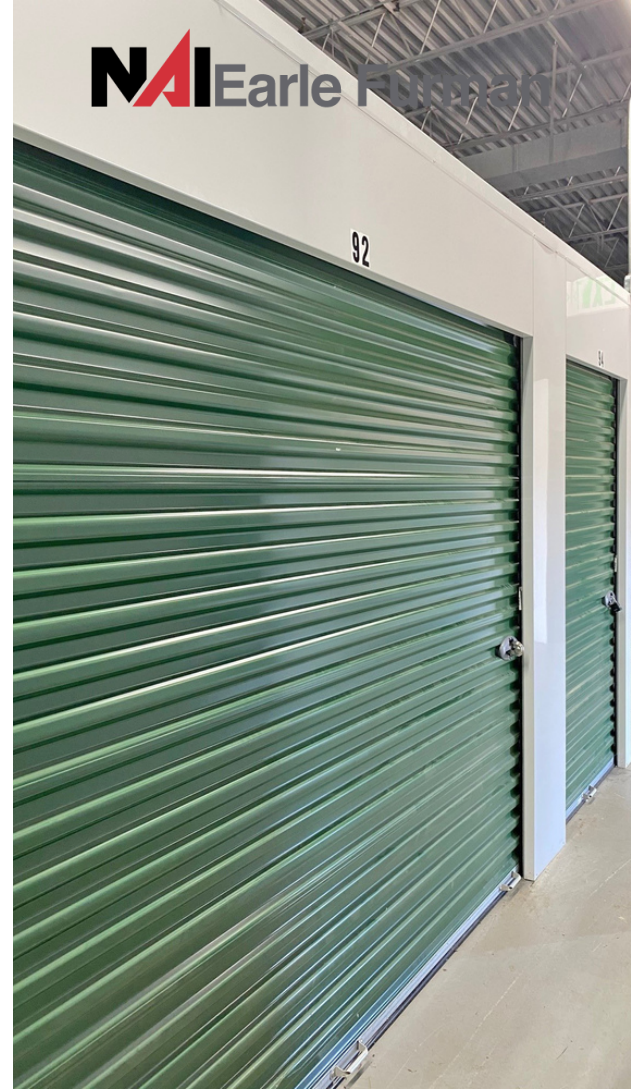
**101 E Washington St**  
Greenville, SC 29601  
naiearlefurman.com

# FOR SALE

1225 Bypass 72 NE Greenwood, SC 29649



**NAI** Earle Furman



**Chris Harrison**

O: +1 864 678 5949

C: +1 864 354 9881

[charrison@naiearlefurman.com](mailto:charrison@naiearlefurman.com)

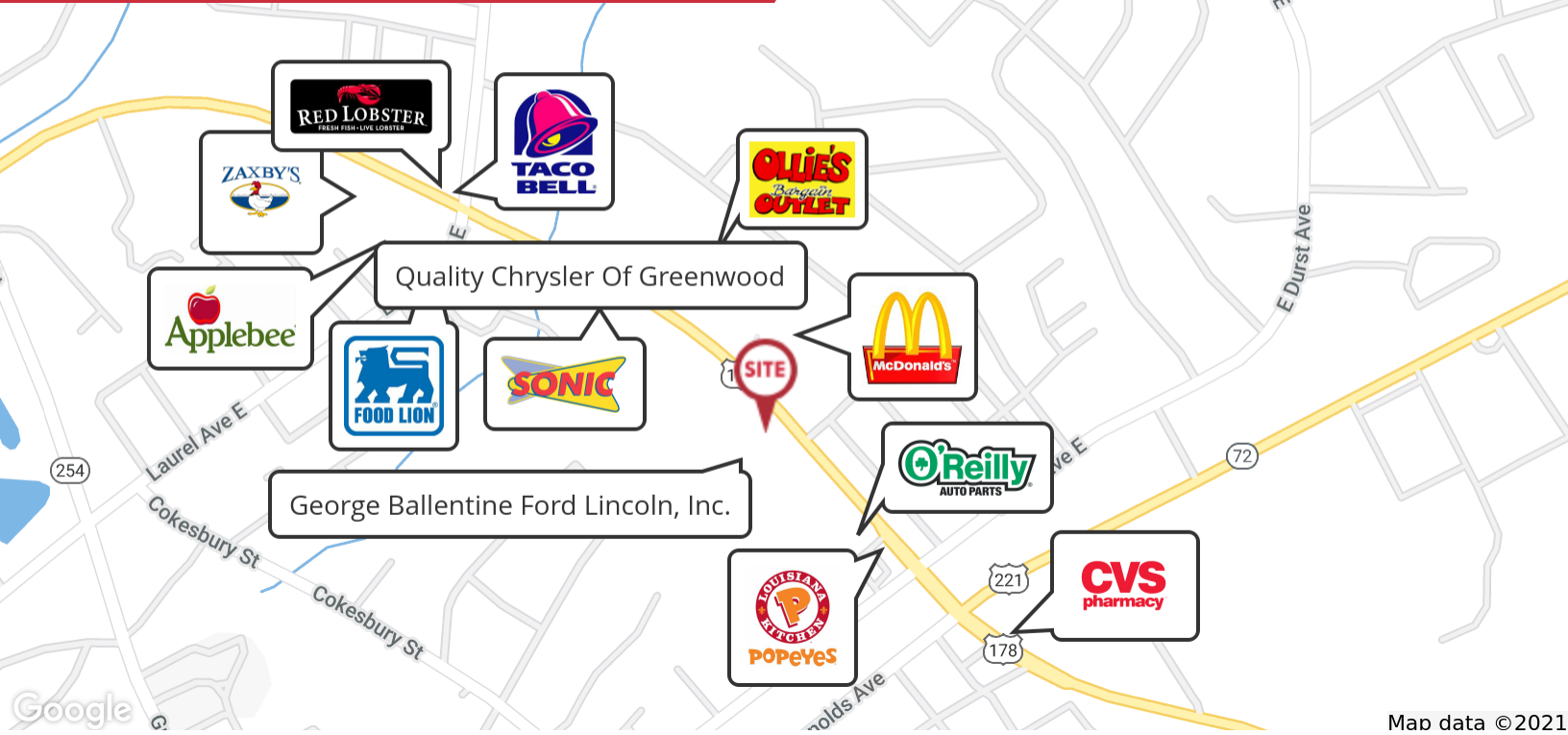
No Warranty Or Representation, Express Or Implied, Is Made As To The Accuracy Of The Information Contained Herein, And The Same Is Submitted Subject To Errors, Omissions, Change Of Price, Rental Or Other Conditions, Prior Sale, Lease Or Financing, Or Withdrawal Without Notice, And Of Any Special Listing Conditions Imposed By Our Principals No Warranties Or Rep- resentations Are Made As To The Condition Of The Property Or Any Hazards Contained Therein Are Any To Be Implied.



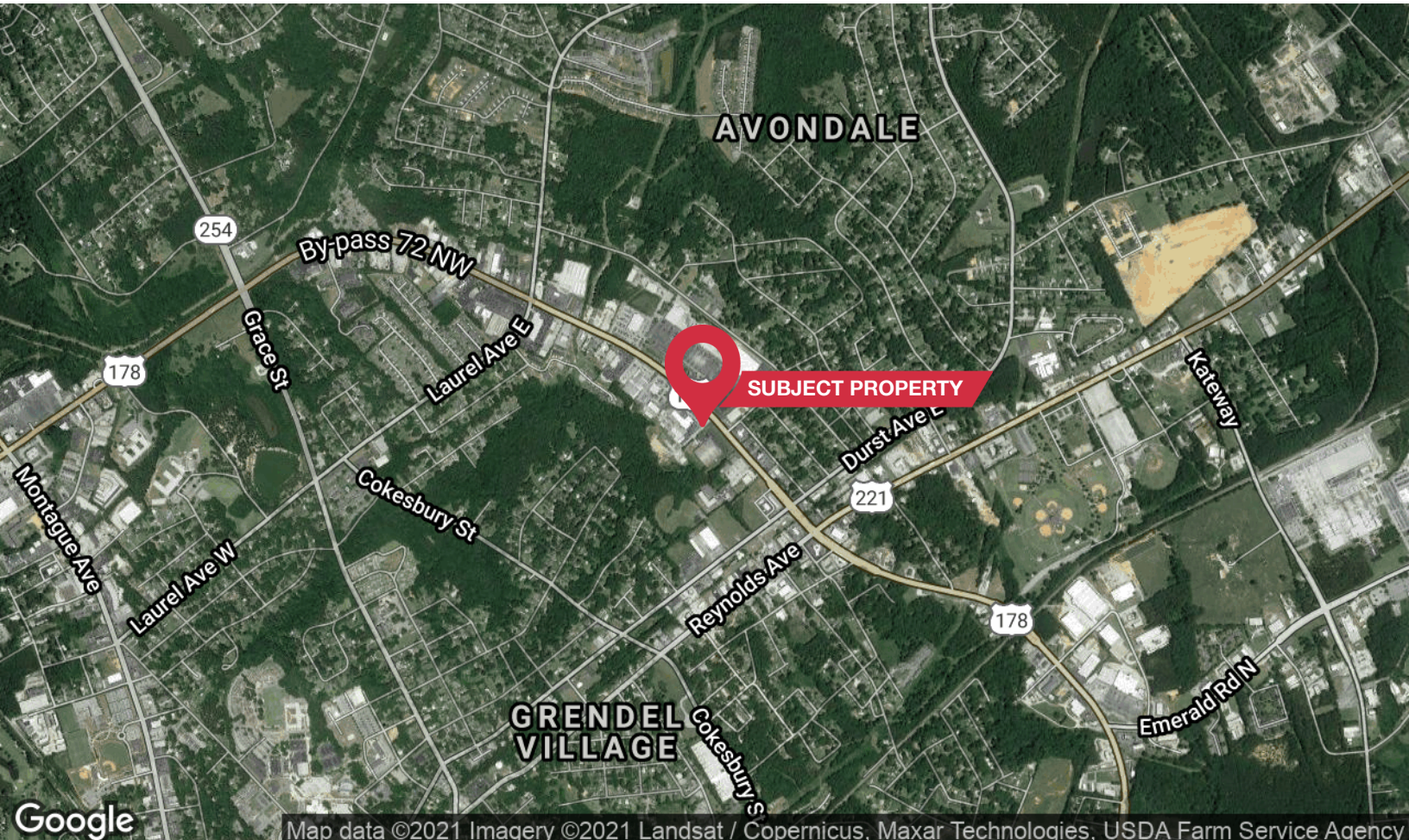
**101 E Washington St**  
Greenville, SC 29601  
[naiearlefurman.com](http://naiearlefurman.com)

# FOR SALE

1225 Bypass 72 NE Greenwood, SC 29649



Map data ©2021



Map data ©2021 Imagery ©2021 Landsat / Copernicus, Maxar Technologies, USDA Farm Service Agency

✉ **Chris Harrison**  
O: +1 864 678 5949  
C: +1 864 354 9881  
charrison@naiearlefurman.com

No Warranty Or Representation, Express Or Implied, Is Made As To The Accuracy Of The Information Contained Herein, And The Same Is Submitted Subject To Errors, Omissions, Change Of Price, Rental Or Other Conditions, Prior Sale, Lease Or Financing, Or Withdrawal Without Notice, And Of Any Special Listing Conditions Imposed By Our Principals. No Warranties Or Representations Are Made As To The Condition Of The Property Or Any Hazards Contained Therein Are Any To Be Implied.

**NAI Earle Furman**