

FOR SALE

10243 Greenville Highway Wellford, SC 29385

\$900,000



Industrial | 4.77 acres

- Buildings include: 11,842 SF pre-engineered steel building + 2,459 SF finished mezzanine, 7,471 SF metal storage building, 5,163 SF metal storage building & 4,517 pole material shed
- Spartanburg County Tax map: 5-16-00-078.01
- Zoned: I-1 light industry - City of Wellford
- Less than 1/2 mile from I-85 (Exit 66)
- Traffic count: 12,762 vpd

Demographics	3 Miles	7 Miles	10 Miles
Total Population:	13,017	74,040	170,090
Average HH Income:	\$50,756	\$61,400	\$54,968

No Warranty Or Representation, Express Or Implied, Is Made As To The Accuracy Of The Information Contained Herein, And The Same Is Submitted Subject To Errors, Omissions, Change Of Price, Rental Or Other Conditions, Prior Sale, Lease Or Financing, Or Withdrawal Without Notice, And Of Any Special Listing Conditions Imposed By Our Principals No Warranties Or Representations Are Made As To The Condition Of The Property Or Any Hazards Contained Therein Are Any To Be Implied.

✉ **Chris Harrison**
 O: +1 864 678 5949
 C: +1 864 354 9881
 charrison@naiearlefurman.com

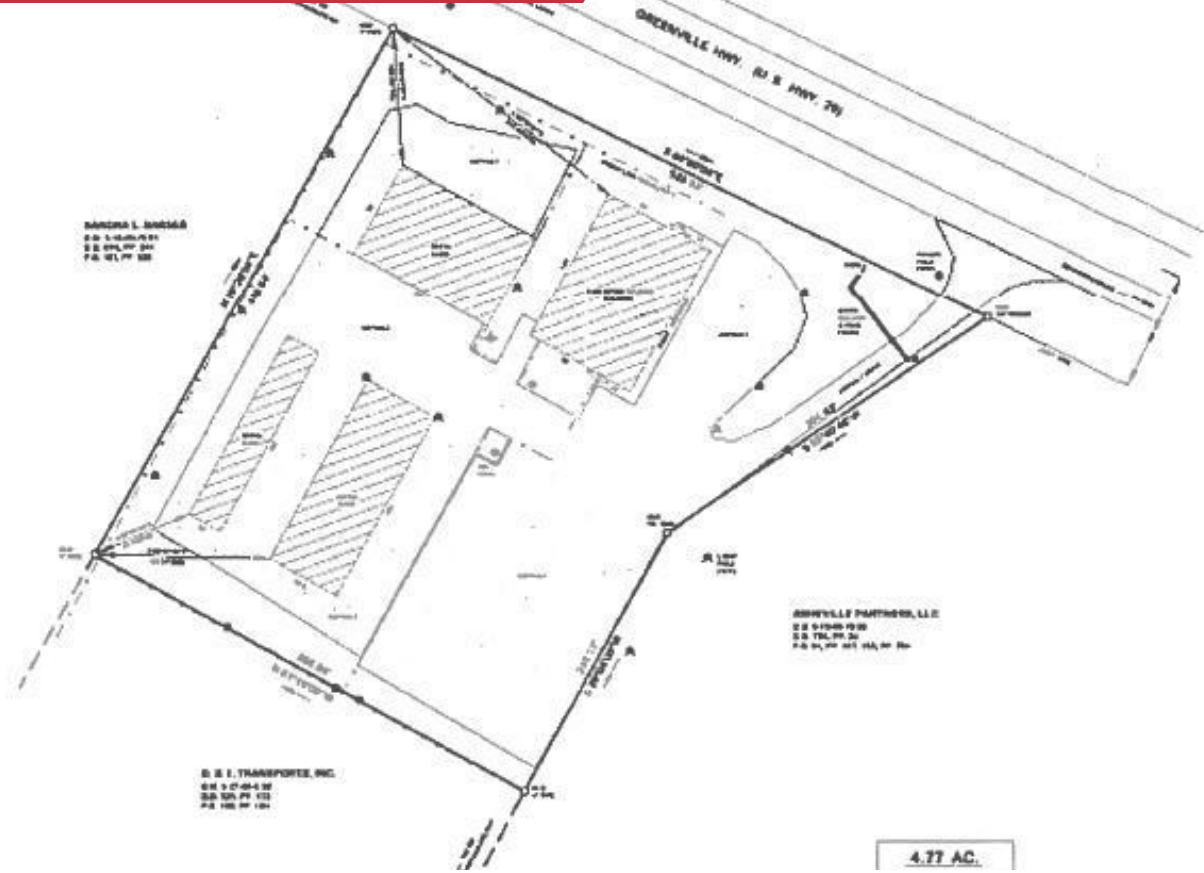
✉ **Ted Lyerly, CCIM**
 O: +1 864 678 5939
 C: +1 864 275 7900
 ted@naiearlefurman.com

No Warranty Or Representation, Express Or Implied, Is Made As To The Accuracy Of The Information Contained Herein, And The Same Is Submitted Subject To Errors, Omissions, Change Of Price, Rental Or Other Conditions, Prior Sale, Lease Or Financing, Or Withdrawal Without Notice, And Of Any Special Listing Conditions Imposed By Our Principals No Warranties Or Representations Are Made As To The Condition Of The Property Or Any Hazards Contained Therein Are Any To Be Implied.

📍 **101 E Washington St**
 Greenville, SC 29601
 naiearlefurman.com

FOR SALE

10243 Greenville Highway Wellford, SC 29385



Chris Harrison

O: +1 864 678 5949

C: +1 864 354 9881

charrison@naiearlefurman.com



Ted Lyerly, CCIM

O: +1 864 678 5939

C: +1 864 275 7900

ted@naiearlefurman.com

No Warranty Or Representation, Express Or Implied, Is Made As To The Accuracy Of The Information Contained Herein, And The Same Is Submitted Subject To Errors, Omissions, Change Of Price, Partial Or Other Conditions, Prior Sale, Lease Or Financing, Or Withdrawal Without Notice, And Of Any Special Listing Conditions Imposed By Our Principals. No Warranties Or Representations Are Made As To The Condition Of The Property Or Any Hazards Contained Therein Are Any To Be Implied.



101 E Washington St

Greenville, SC 29601

naiearlefurman.com