

±60 ACRES FOR SALE

76 Bowater Pass Fountain Inn, SC 29644

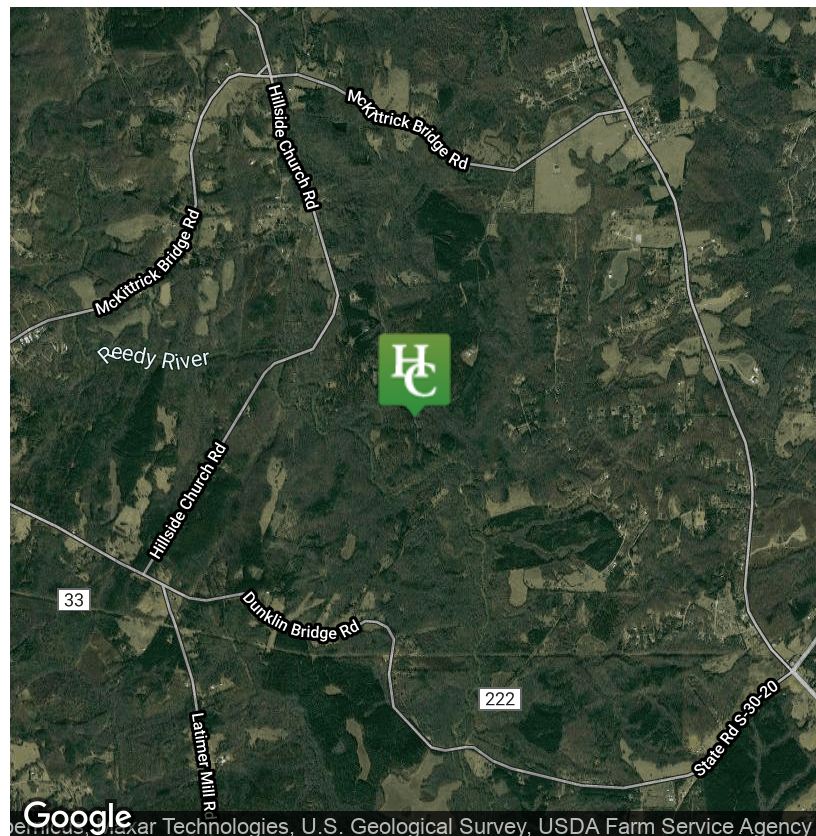


\$495,000



Property Details

- Greenville County Tax Map #s 0565010102100 & 0565010102000 (a portion of)
- Asking Price: \$8,250/acre
- 2/3 of a mile of Reedy River frontage
- 4+/- acres of fields adjacent to the river including a 500x20 yard lane
- The property is mostly wooded with a mixture of pine and hardwoods
- Excellent hunting and fishing opportunities
- Two elevated box blinds in excellent condition
- Rolling topography and quality internal road system
- Excellent homesite
- Located 20+/- miles from downtown Greenville and 10+/- miles from Simpsonville



✉ Rusty Hamrick
+1 864 232 9040
rhamrick@naiearlefurman.com

No Warranty Or Representation, Express Or Implied, Is Made As To The Accuracy Of The Information Contained Herein. And The Same Is Submitted Subject To Errors, Omissions, Change Of Price, Rental Or Other Conditions, Prior Sale, Lease Or Financing, Or Withdrawal Without Notice, And Of Any Special Listing Conditions Imposed By Our Principals No Warranties Or Representations Are Made As To The Condition Of The Property Or Any Hazards Contained Therein Are Any To Be Implied.

📍 101 E Washington St
Greenville, SC 29601
naiearlefurman.com

Property Description

76 Bowater Pass Fountain Inn, SC 29644



Property Overview

The Reedy River tract is a must see for any buyer searching for high quality hunting acreage close to town. Four acres of very secluded fields spread out along the majority of the river frontage really set this property apart. These fields include a long and narrow lane that stretches for 500 yards between the river and a wet weather slough and feathered by thick privet. Some diverse stands of older pine make up the bulk of the property and there is no shortage of roost areas. The habitat is there to consistently hold trophy whitetails and old toms and the layout of the property is very hunter friendly in terms of being able to access the bottom fields from an elevated position. An old timber loading dock sits at the highest point of the property and would make an ideal building site for a home or cabin.

Location Overview

Located 20+/- miles from downtown Greenville and 10+/- miles from Simpsonville

Drone Footage

76 Bowater Pass Fountain Inn, SC 29644



✉ Rusty Hamrick
+1 864 232 9040
rhamrick@naiearlefurman.com

No Warranty Or Representation, Express Or Implied, Is Made As To The Accuracy Of The Information Contained Herein. And The Same Is Submitted Subject To Errors, Omissions, Change Of Price, Rental Or Other Conditions, Prior Sale, Lease Or Financing, Or Withdrawal Without Notice, And Of Any Special Listing Conditions Imposed By Our Principals No Warranties Or Rep- resentations Are Made As To The Condition Of The Property Or Any Hazards Contained Therein Are Any To Be Implied.

📍 101 E Washington St
Greenville, SC 29601
naiearlefurman.com

Property Photos

76 Bowater Pass Fountain Inn, SC 29644



✉ Rusty Hamrick
+1 864 232 9040
rhamrick@naiearlefurman.com

No Warranty Or Representation, Express Or Implied, Is Made As To The Accuracy Of The Information Contained Herein, And The Same Is Submitted Subject To Errors, Omissions, Change Of Price, Rental Or Other Conditions, Prior Sale, Lease Or Financing, Or Withdrawal Without Notice, And Of Any Special Listing Conditions Imposed By Our Principals No Warranties Or Representations Are Made As To The Condition Of The Property Or Any Hazards Contained Therein Are Any To Be Implied.

📍 101 E Washington St
Greenville, SC 29601
naiearlefurman.com

Property Photos

76 Bowater Pass Fountain Inn, SC 29644



✉ Rusty Hamrick
+1 864 232 9040
rhamrick@naiearlefurman.com

No Warranty Or Representation, Express Or Implied, Is Made As To The Accuracy Of The Information Contained Herein, And The Same Is Submitted Subject To Errors, Omissions, Change Of Price, Rental Or Other Conditions, Prior Sale, Lease Or Financing, Or Withdrawal Without Notice, And Of Any Special Listing Conditions Imposed By Our Principals No Warranties Or Representations Are Made As To The Condition Of The Property Or Any Hazards Contained Therein Are Any To Be Implied.

📍 101 E Washington St
Greenville, SC 29601
naiearlefurman.com

CAM 01:54AM 12/04/20 48F STEALT