

For Lease

Office Space Near Hospital
Available Immediately



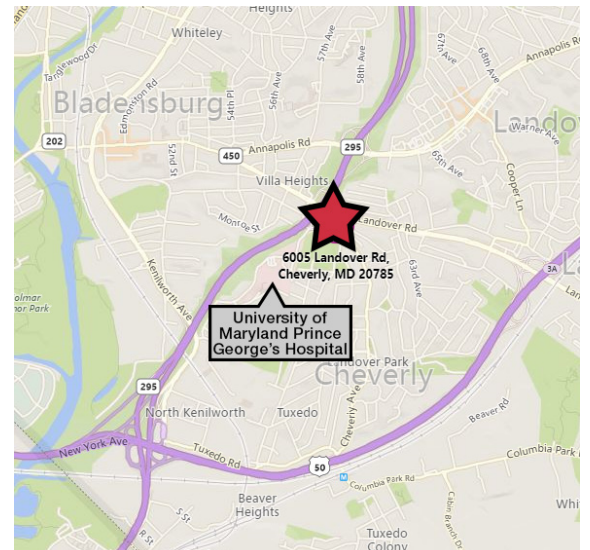
6005 Landover Road, Lower Level

Cheverly, Prince George's County, MD

Property Features

- Approximately ± 1,368 Square Feet of Office Space
- Located near University of Maryland Prince George's County Hospital at Hospital Drive and Landover Road
- Handicapped Accessible
- Use as Medical or General Professional Office such as insurance, accounting, nursing management, counseling and consulting
- Space with exam rooms
- Ample Free Parking on Site
- Tenant pays electric and house cleaning
- Landlord pays other expenses
- Rents are very competitive

2021 Demographics	1 mile	3 mile	5 mile
Population	24,430	163,502	485,584
Households (HH)	8,370	56,322	175,593
Avg HH Income	\$88,250	\$86,145	\$96,480

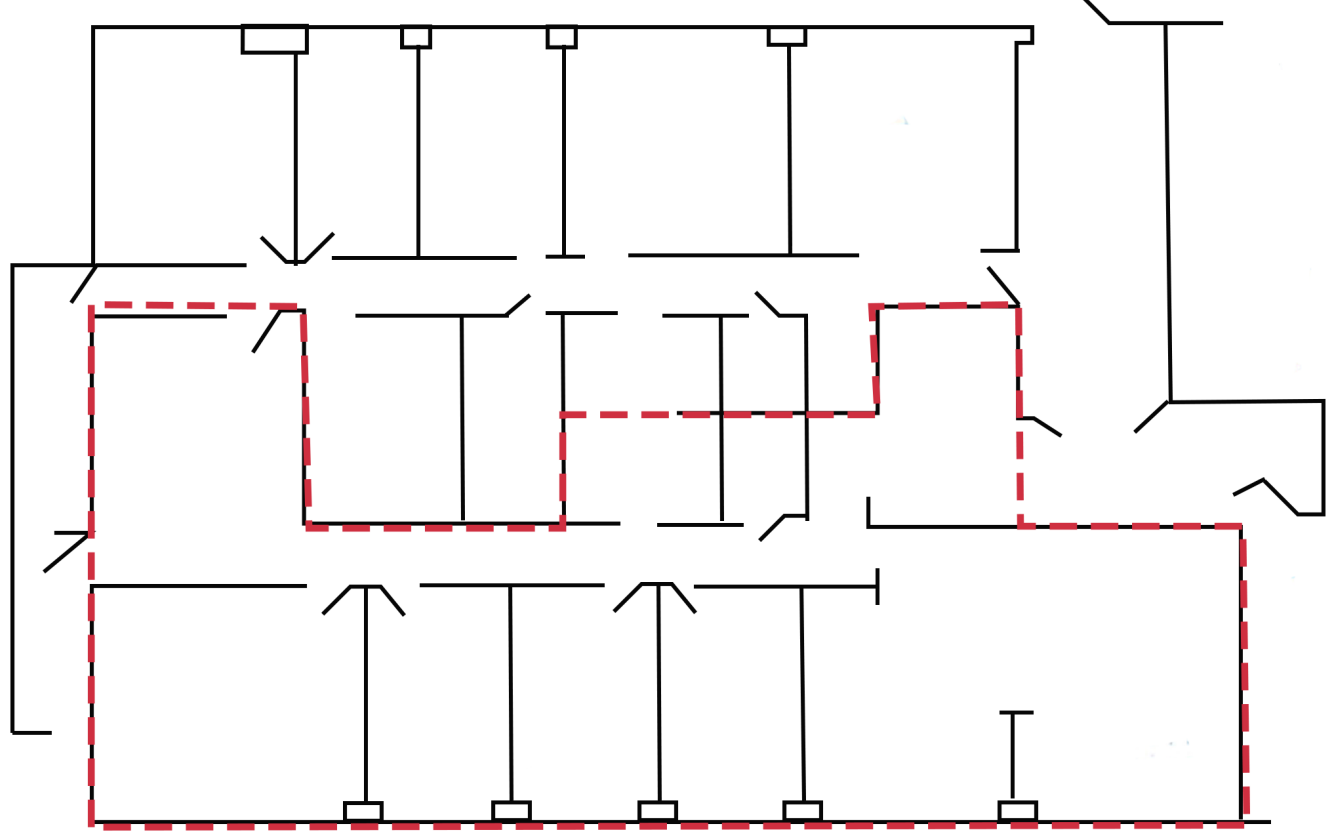


LEASE RATE:
\$1,850.00 PER MONTH, NET OF ELECTRIC

The information contained herein has been given to us by the owner of the property or other sources we deem reliable. We have no reason to doubt its accuracy, but we do not guarantee it. Floor plans, site plans and other graphic representations of this property have been reduced and reproduced, and are not necessarily to scale. All information should be verified prior to purchase or lease.

10100 Business Parkway
Lanham, Maryland 20706
+1 301 459 4400
naimichael.com

For Lease
Office Space



LOWER LEVEL - ± 1,368 Sq. Ft. (NOT TO SCALE)
— — AVAILABLE

Edward H. Lockett
 +1 301 918 2918
 elockett@naimichael.com

Marcus N. Daniels
 +1 301 918 2954
 mdaniels@naimichael.com

Terry Rogers
 +1 301 526 2584
 trogers@naimichael.com