

OFFICE SPACE FOR LEASE

±5,269 SF Located in Greenville's CBD

NEW OWNERSHIP



Entire 4th Floor Opportunity

18 E. North Street | Greenville, SC

- Open floor plan
- Numerous windows providing natural light
- Exterior facade signage available
- Surface parking available
- Excellent location one block off Main Street with Greenville ONE Center, the Hyatt, One Liberty Square, the Peace Center, retail, restaurants, workout facilities, etc. all within walking distance
- Tenant Improvement Allowance available
- Lease rate: \$25.00/SF NNN

Demographics	1 Mile	3 Miles	5 Miles
Total Population:	8,563	70,694	149,663
Average HH Income:	\$64,148	\$55,707	\$54,469

No Warranty Or Representation, Express Or Implied, Is Made As To The Accuracy Of The Information Contained Herein, And The Same Is Submitted Subject To Errors, Omissions, Change Of Price, Rental Or Other Conditions, Prior Sale, Lease Or Financing, Or Withdrawal Without Notice, And Of Any Special Listing Conditions Imposed By Our Principals No Warranties Or Representations Are Made As To The Condition Of The Property Or Any Hazards Contained Therein Are Any To Be Implied.



✉ **Michael Roth**
O: +1 864 232 9040 x5946
mroth@naiearlefurman.com

✉ **John Gray, Jr., CCIM**
O: +1 864 678 5991
C: +1 864 414 1440
jgray@naiearlefurman.com

No Warranty Or Representation, Express Or Implied, Is Made As To The Accuracy Of The Information Contained Herein, And The Same Is Submitted Subject To Errors, Omissions, Change Of Price, Rental Or Other Conditions, Prior Sale, Lease Or Financing, Or Withdrawal Without Notice, And Of Any Special Listing Conditions Imposed By Our Principals No Warranties Or Representations Are Made As To The Condition Of The Property Or Any Hazards Contained Therein Are Any To Be Implied.

📍 **101 E Washington St**
Greenville, SC 29601
naiearlefurman.com

SPACE PHOTOS



Michael Roth
O: +1 864 232 9040 x5946
mroth@naiearlefurman.com



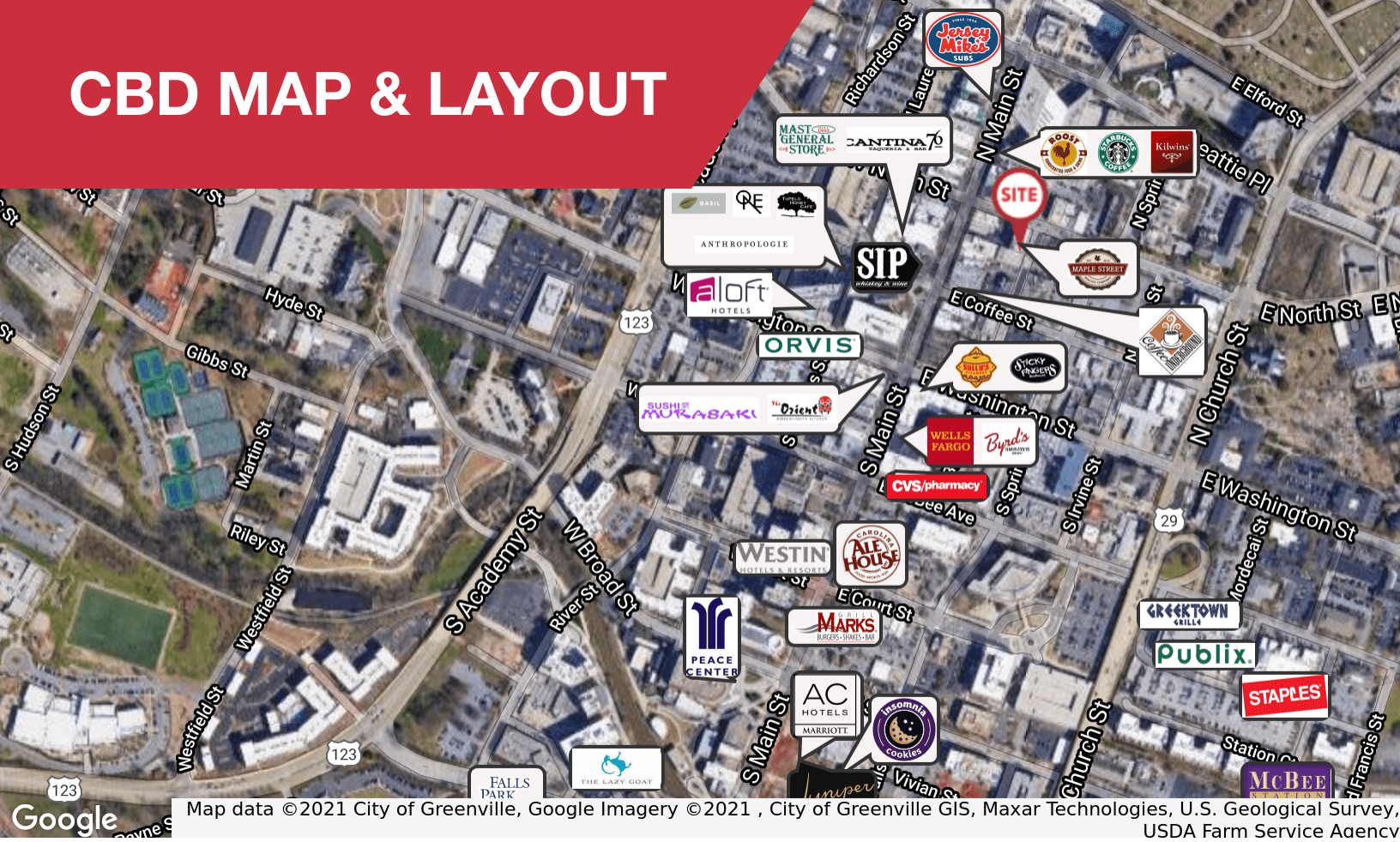
John Gray, Jr., CCIM
O: +1 864 678 5991
C: +1 864 414 1440
jgray@naiearlefurman.com

No Warranty Or Representation, Express Or Implied, Is Made As To The Accuracy Of The Information Contained Herein, And The Same Is Submitted Subject To Errors, Omissions, Change Of Price, Partial Or Other Conditions, Prior Sale, Lease Or Financing, Or Withdrawal Without Notice And Of Any Special Listing Conditions Imposed By Our Principals. No Warranties Or Representations Are Made As To The Condition Of The Property Or Any Hazards Contained Therein Any To Be Implied.

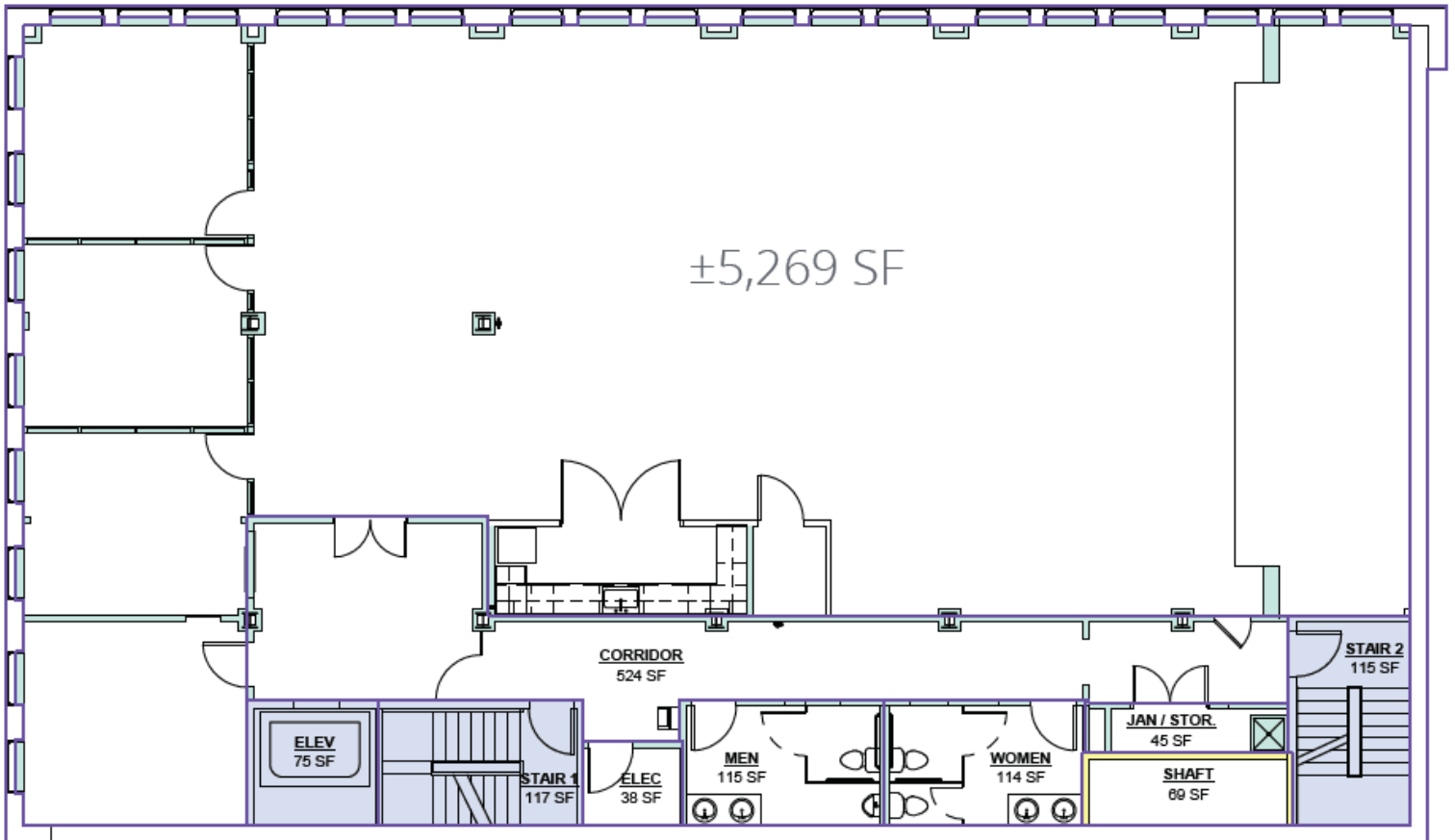


101 E Washington St
Greenville, SC 29601
naiearlefurman.com

CBD MAP & LAYOUT



Map data ©2021 City of Greenville, Google Imagery ©2021, City of Greenville GIS, Maxar Technologies, U.S. Geological Survey, USDA Farm Service Agency



Michael Roth
 O: +1 864 232 9040 x5946
 mroth@naiearlefurman.com

John Gray, Jr., CCIM
 O: +1 864 678 5991
 C: +1 864 414 1440
 jgray@naiearlefurman.com

No Warranty Or Representation, Express Or Implied, Is Made As To The Accuracy Of The Information Contained Herein, And The Same Is Submitted Subject To Errors, Omissions, Change Of Price, Rental Or Other Conditions, Prior Sale, Lease Or Financing, Or Withdrawal Without Notice, And Of Any Special Listing Conditions Imposed By Our Principals. No Warranties Or Representations Are Made As To The Condition Of The Property Or Any Hazards Contained Therein As Any To Be Implied.

NAI Earle Furman