

231 Beverly Road

For Sale or Lease

NAI Earle Furman

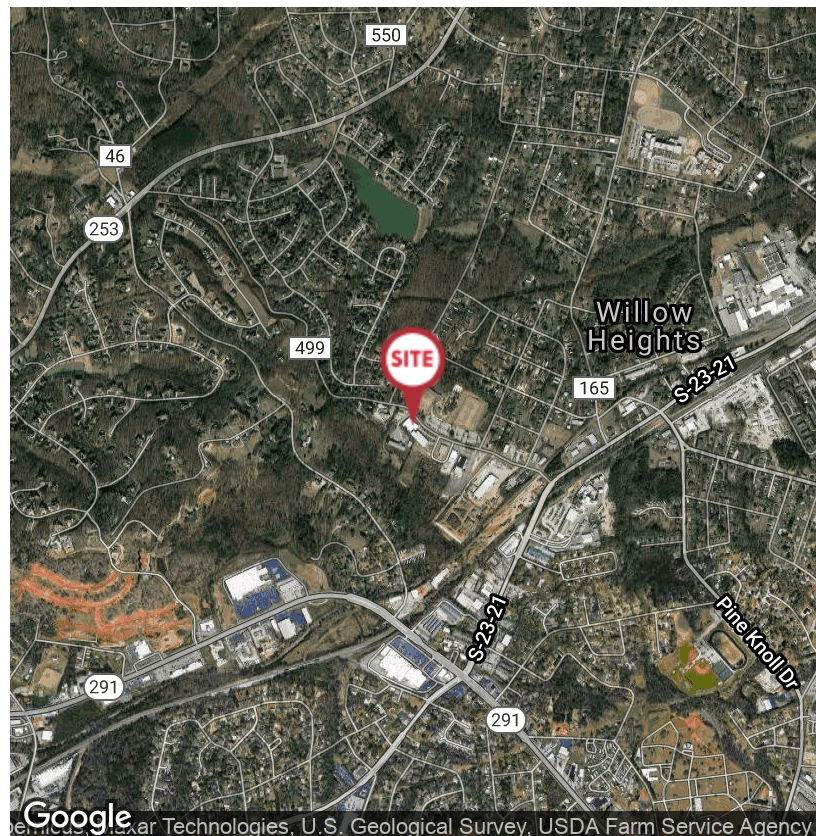
REDUCED SALE PRICE \$2,195,000



231 Beverly Road | Greenville

- ±43,917 SF warehouse located on ±5.57 acres (includes ±20,000 SF office space)
- Masonry & steel construction | Metal roof
- Sprinklers: Wet (±25,000 SF sprinklered)
- Lighting: Fluorescent
- Ceiling heights: 12' to 21'
- (1) Drive-in door | (3) Dock doors
- 100% heated & cooled office/warehouse
- 55 vehicle parking spaces with space for more
- All utilities available | Zoned S-1
- ±0.4 mile from Rutherford Road, ±1.8 miles from Wade Hampton Blvd, ±3.5 miles from I-385 & ±7.0 miles from I-85

Also available for lease: \$4.50/SF NNN



J. Earle Furman, Jr., SIOR
O: +1 864 232 9040
C: +1 864 230 9102
efurman@naiearlefurman.com

No Warranty Or Representation, Express Or Implied, Is Made As To The Accuracy Of The Information Contained Herein, And The Same Is Submitted Subject To Errors, Omissions, Change Of Price, Rental Or Other Conditions, Prior Sale, Lease Or Financing, Or Withdrawal Without Notice, And Of Any Special Listing Conditions Imposed By Our Principals No Warranties Or Representations Are Made As To The Condition Of The Property Or Any Hazards Contained Therein Are Any To Be Implied.



101 E Washington St
Greenville, SC 29601
naiearlefurman.com

FOR SALE OR LEASE

231 Beverly Rd Greenville, SC 29609



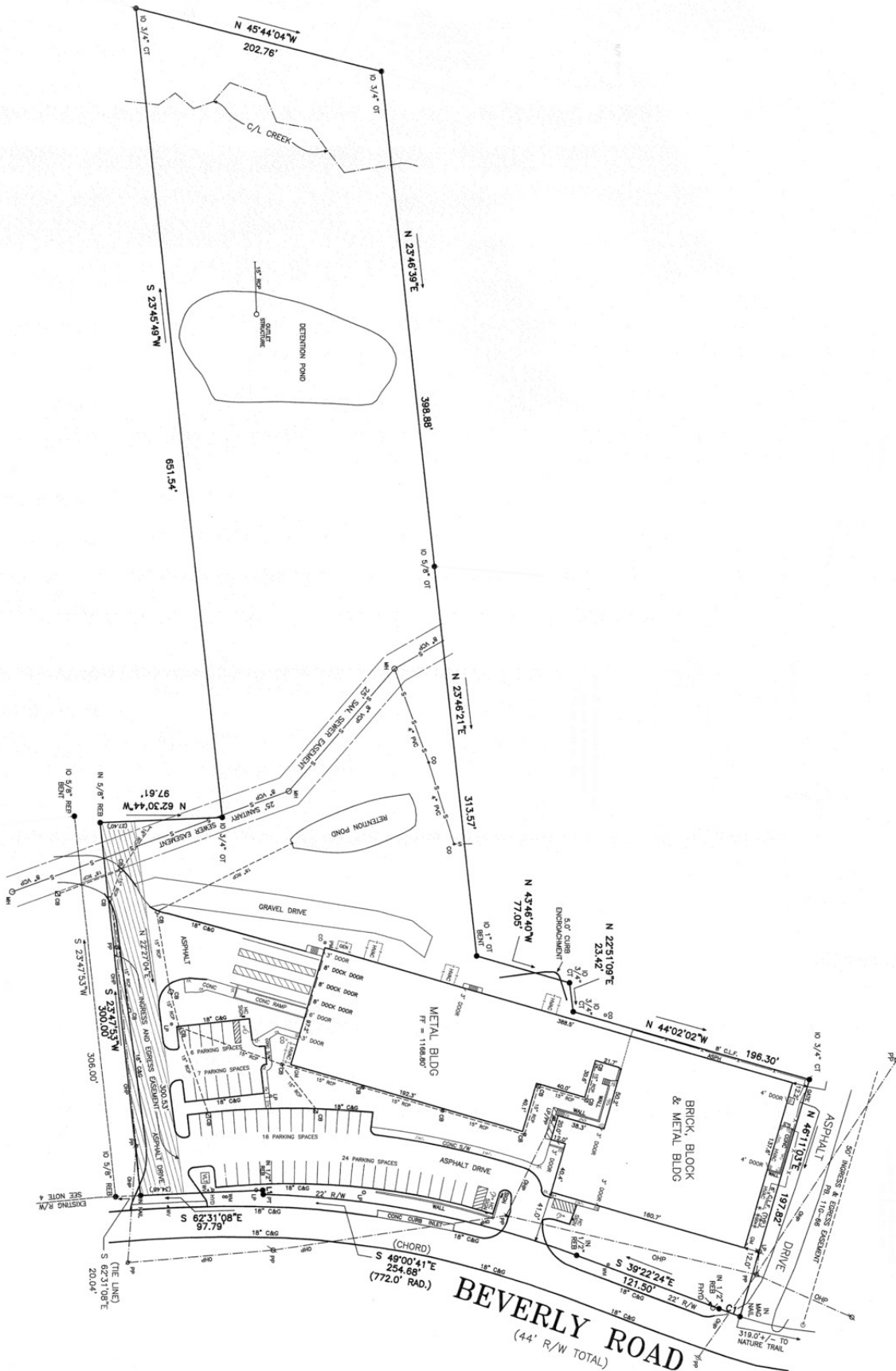
✉ **J. Earle Furman, Jr., SIOR**
O: +1 864 232 9040
C: +1 864 230 9102
efurman@naearlefurman.com

No Warranty Or Representation, Express Or Implied, Is Made As To The Accuracy Of The Information Contained Herein, And The Same Is Submitted Subject To Errors, Omissions, Change Of Price, Rental Or Other Conditions, Prior Sale, Lease Or Financing, Or Withdrawal Without Notice, And Of Any Special Listing Conditions Imposed By Our Principals. No Warranties Or Representations Are Made As To The Condition Of The Property Or Any Hazards Contained Therein Are Any To Be Implied.

NAI Earle Furman

FOR SALE OR LEASE

231 Beverly Road, Greenville, SC 29609



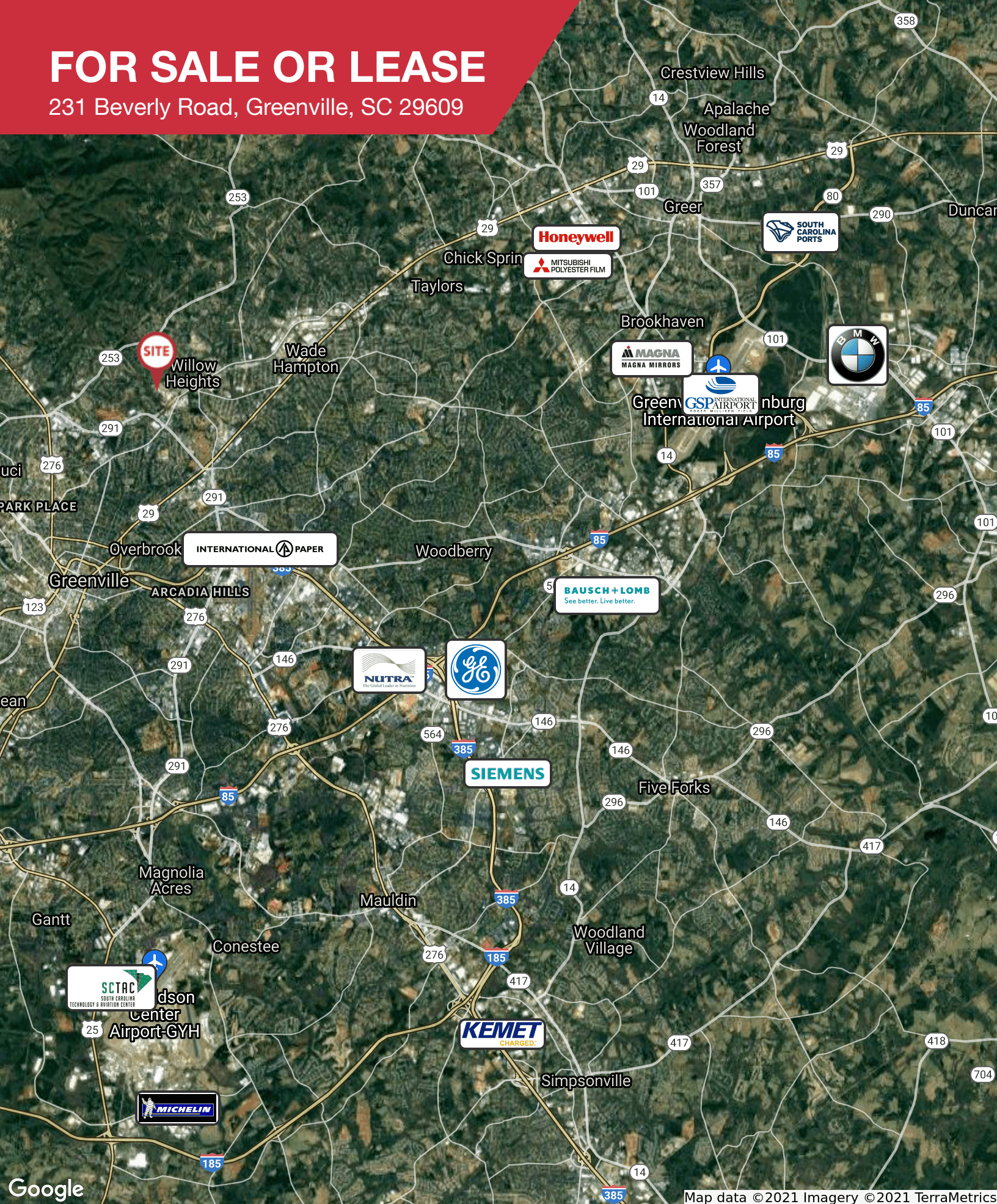
J. Earle Furman, Jr., SIOR
 O: +1 864 232 9040
 C: +1 864 230 9102
efurman@naiearlefurman.com

No Warranty Or Representation, Express Or Implied, Is Made As To The Accuracy Of The Information Contained Herein, And The Same Is Submitted Subject To Errors, Omissions, Change Of Price, Rental Or Other Conditions, Prior Sale, Lease Or Financing, Or Withdrawal Without Notice, And Of Any Special Listing Conditions Imposed By Our Principals. No Warranties Or Representations Are Made As To The Condition Of The Property Or Any Hazards Contained Therein Are Any To Be Implied.

NAI Earle Furman

FOR SALE OR LEASE

231 Beverly Road, Greenville, SC 29609



Map data © 2021 Imagery © 2021 TerraMetrics

✉ **J. Earle Furman, Jr., SIOR**
O: +1 864 232 9040
C: +1 864 230 9102
efurman@naearlefurman.com

No Warranty Or Representation, Express Or Implied, Is Made As To The Accuracy Of The Information Contained Herein, And The Same Is Submitted Subject To Errors, Omissions, Change Of Price, Rental Or Other Conditions, Prior Sale, Lease Or Financing, Or Withdrawal Without Notice, And Of Any Special Listing Conditions Imposed By Our Principals. No Warranties Or Representations Are Made As To The Condition Of The Property Or Any Hazards Contained Therein Are Any To Be Implied.

NAI Earle Furman