

For Lease  
**Riverdale Park**



**NAIMichael**

For Lease  
**Office Space**



Contact Agent(s) for more information

**Barbara Richman Kahn**

+1 301 918 2952  
brichman@naimichael.com

**Jeffrey D. Ludwig**

+1 301 918 2923  
jludwig@naimichael.com

**Jonathan Reneau**

+1 301 918 2920  
jreneau@naimichael.com

**Jeffrey D.K. Ludwig**

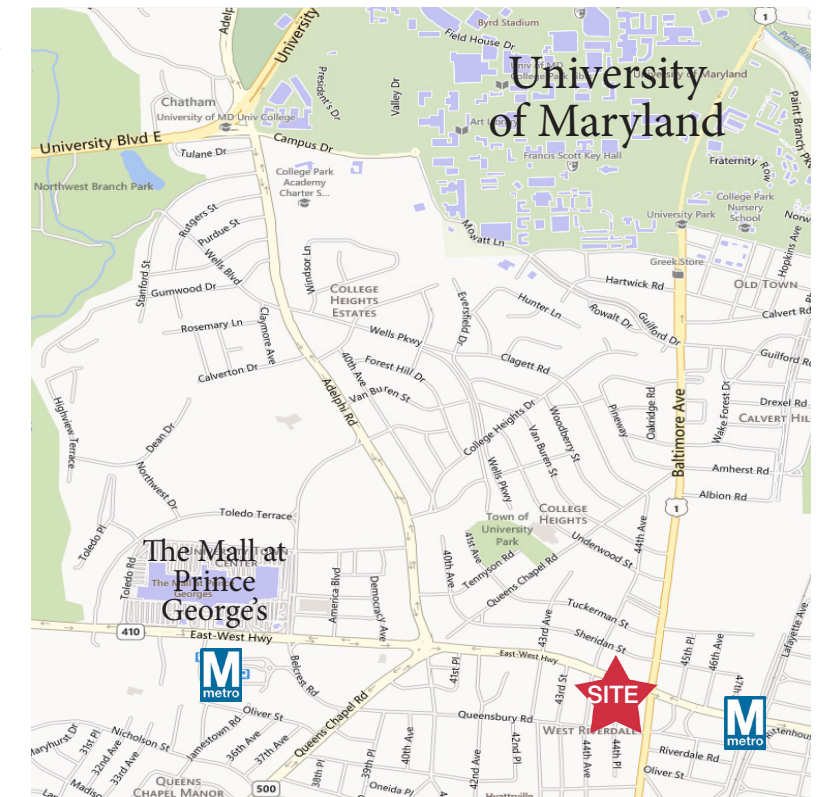
+1 301 918 2924  
kludwig@naimichael.com



**6200 Baltimore Avenue**  
Riverdale Park, MD

**Property Description**

- Close proximity to University of Maryland, College Park
- Great access to University Town Center, Mall at Prince George's, Metro & MARC stations
- 36,460+/- RSF available immediately on multiple floors
- 175 surface parking space
- **LEASE RATES: \$11.95 to \$19.75**



The information contained herein has been given to us by the owner of the property or other sources we deem reliable. We have no reason to doubt its accuracy, but we do not guarantee it. Floor plans, site plans and other graphic representations of this property have been reduced and reproduced, and are not necessarily to scale. All information should be verified prior to purchase or lease.

10100 Business Parkway  
Lanham, Maryland 20706  
+1 301 459 4400  
[naimichael.com](http://naimichael.com)

Owned & Managed by:



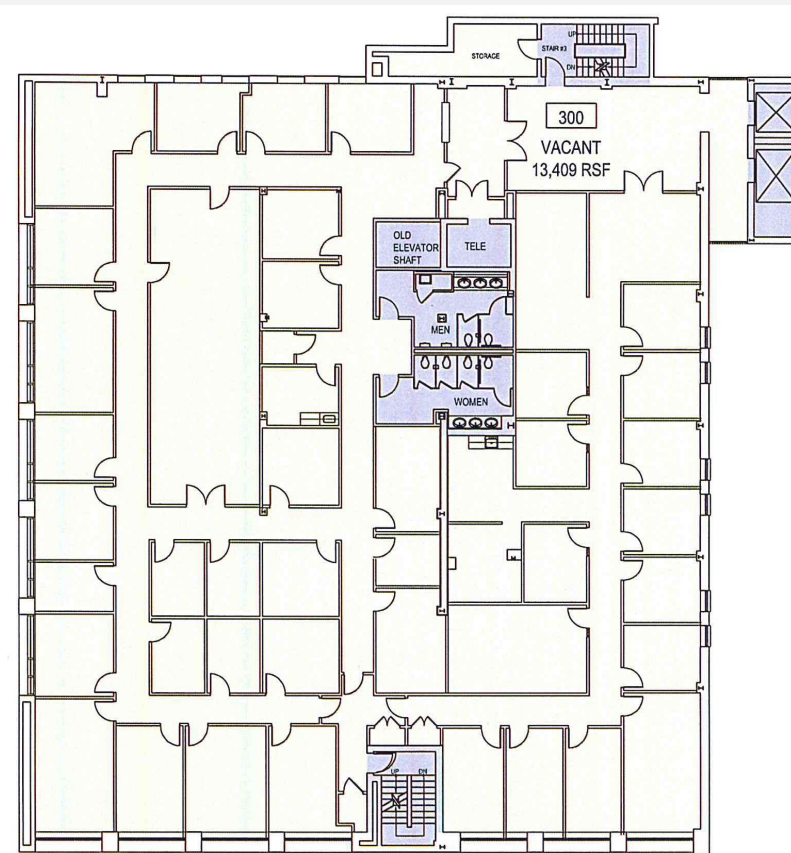
For Lease

# 6200 Baltimore Avenue Riverdale Park, MD



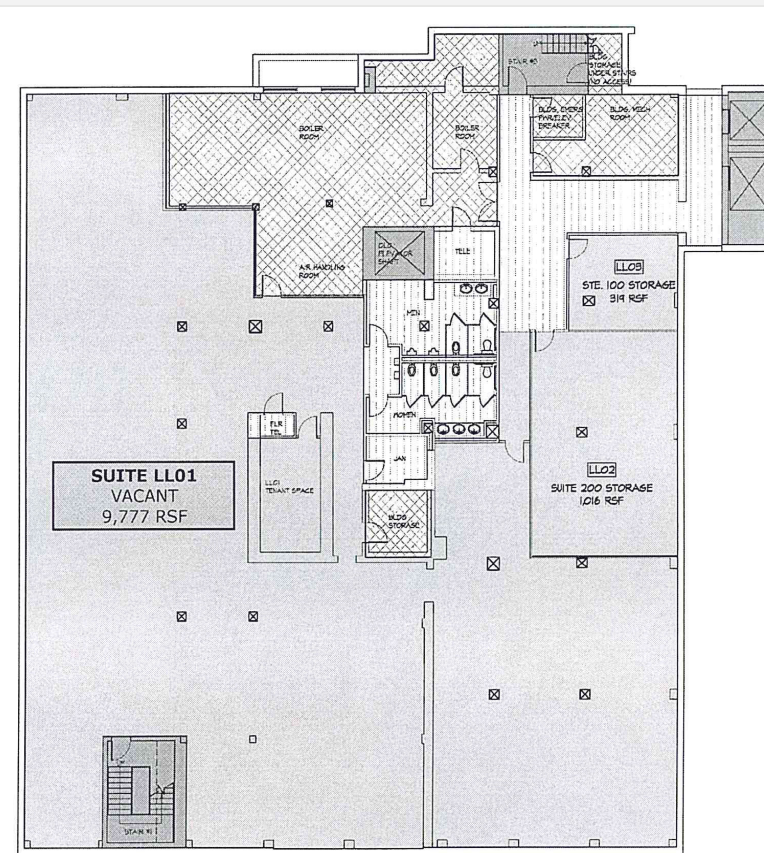
### First Floor

- Suite 100: 7,432 SF - existing office buildout
- Suite 102: 3,957 SF - former bank space with walk-in safe
- Both suites are contiguous totaling 11,389 SF
- **LEASE RATE: \$19.75 PSF, Full Service**



### Third Floor

- 13,294 SF
- Existing office buildout
- **LEASE RATE: \$19.75 PSF, Full Service**



### Lower Level

- 9,777 SF
- Existing office buildout
- **LEASE RATE: \$11.95 PSF, Full Service**

Owned & Managed by:

