



Naimichael

For Lease
Warehouse/Office
Laurel, Howard County, MD

21,000 sf

9381 Davis Avenue

Laurel, Howard County, MD

For more information:

Allen Cornell

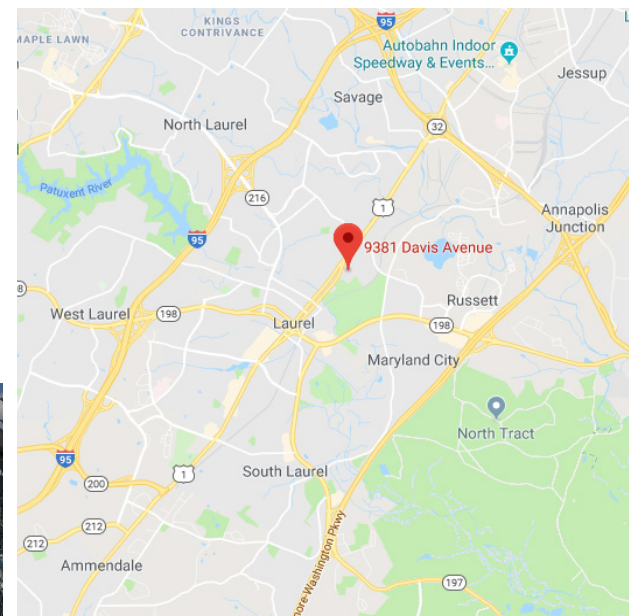
+1 301 918 2909 • acornell@naimichael.com

Joseph Palermo

+1 301 918 2916 • jpalermo@naimichael.com

Property Features

- Approx. 21,000 sf available
- 10,500 sf of office and 10,500 sf of warehouse
- 18' clear warehouse
- Dock & Drive-in loading
- Easy access to I-95, B/W Parkway (295) and Inter County Connector (Rt 200)



The information contained herein has been given to us by the owner of the property or other sources we deem reliable. We have no reason to doubt its accuracy, but we do not guarantee it. Floor plans, site plans and other graphic representations of this property have been reduced and reproduced, and are not necessarily to scale. All information should be verified prior to purchase or lease.

10100 Business Parkway
Lanham, Maryland 20706

+1 301 459 4400

naimichael.com

For Lease
9381 Davis Avenue, Laurel
Howard County, MD



NAMichael

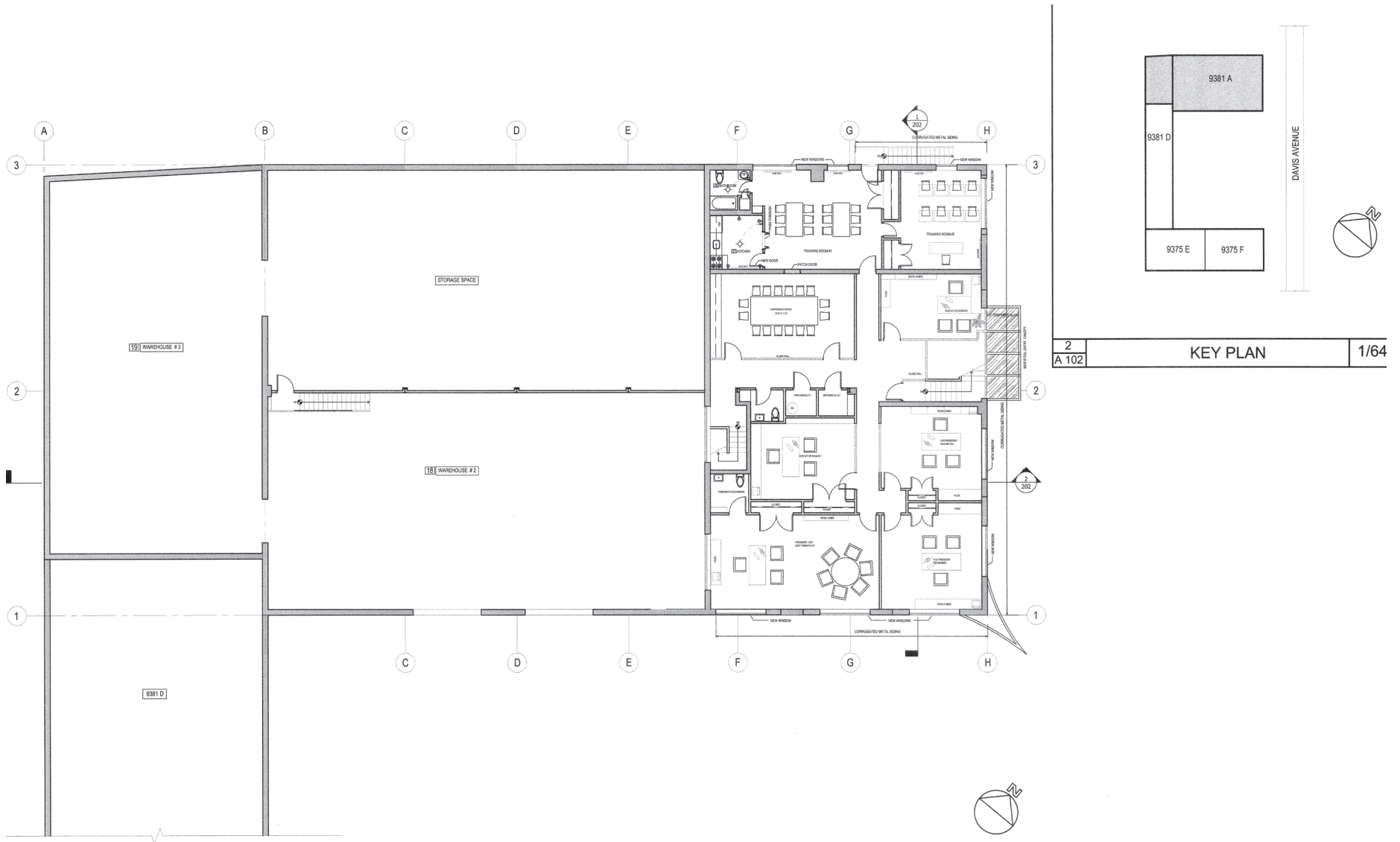
10100 Business Parkway
Lanham, Maryland 20706
+1 301 459 4400
naimichael.com

For Lease
9381 Davis Avenue, Laurel
Howard County, MD



FIRST FLOOR PLAN

For Lease
9381 Davis Avenue, Laurel
Howard County, MD



SECOND FLOOR PLAN