



1775 Rockville Pike

Rockville, Maryland



Property Features

- 3,750± SF available, located on 1st floor of new EVEN Hotel, opened March 2014
- EVEN Hotel is a "lifestyle" brand (www.evenhotels.com)
- Great visibility and access to Rockville Pike (Route 355) - 52,020 average daily traffic
- Adjacent to Congressional Village & Congressional Plaza
- Completely renovated space with expanded glass line and new prominent signage fronting Rockville Pike (Route 355)
- Three blocks from Twinbrook Metro
- Lease Rate: \$45/SF/year, NNN

Michael Isen

+1 301 918 2908
misen@naimichael.com

Allen Cornell

+1 301 918 2909
acornell@naimichael.com

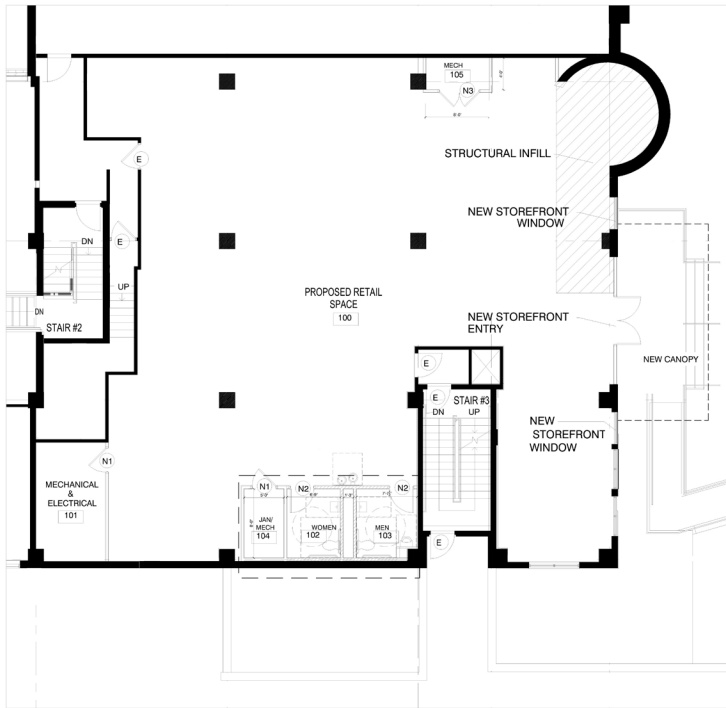
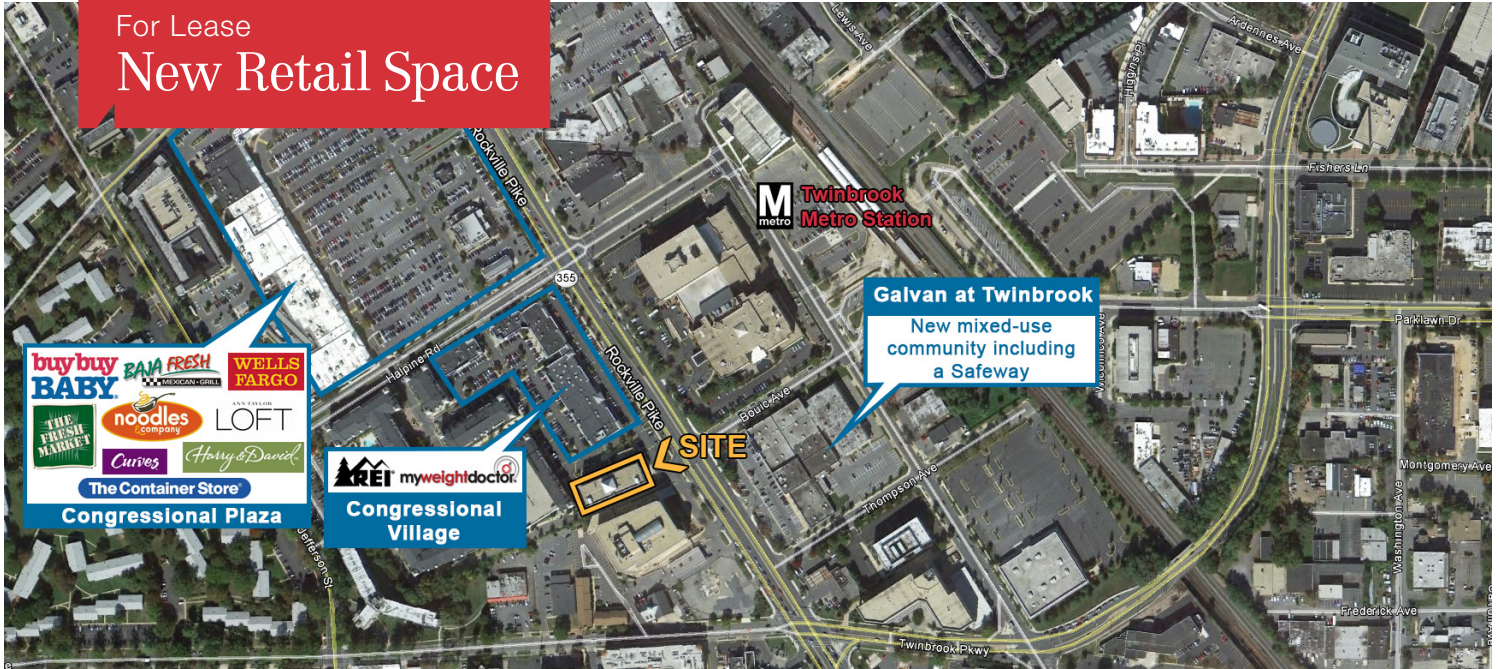
Michael DiMeglio

+1 301 918 2949
mdimeglio@naimichael.com



10100 Business Parkway
 Lanham, Maryland 20706
 +1 301 459 4400
naimichael.com

For Lease New Retail Space



2 FIRST FLOOR PLAN - RETAIL SPACE - NEW WORK
A.1 1/8"=1'-0"

— EXISTING WALLS
— NEW PARTITION P-1
--- FUTURE PARTITIONS

Demographics

	1 mile	3 miles	5 miles
Population	20,547	146,870	345,293
Households (HH)	8,955	55,759	129,568
Avg HH Income	\$103,143	\$123,738	\$134,705

Nelson SiteReports 2015 ests

