



Gateway Centre

7226 Lee Deforest Drive - Units 104 & 105
Columbia, Howard County, Maryland

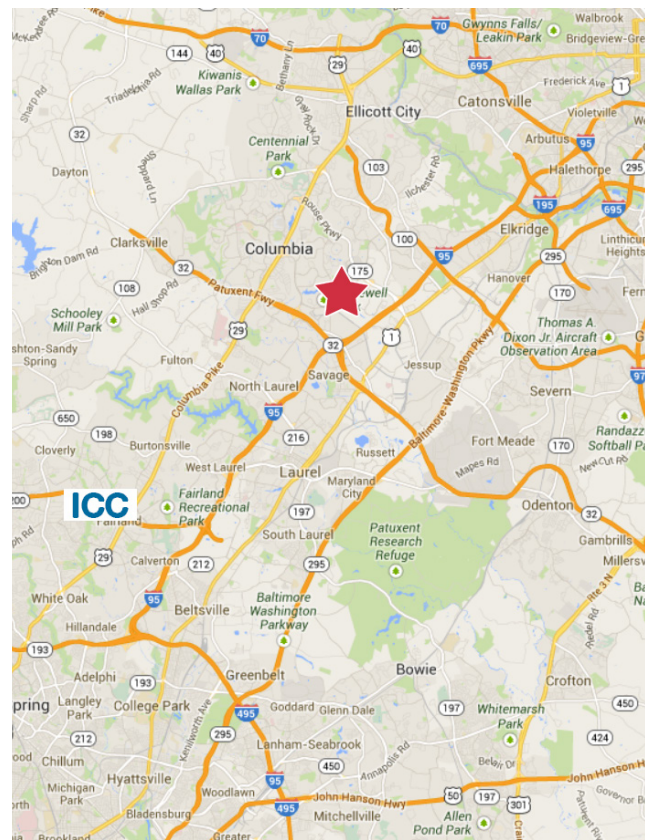
Property Features

- Approx. 5,500 - 11,526 sq. ft.
- Prominent 1st floor space with lobby and direct outside entrance
- Completely built out with a mix of private offices, open office area and function room
- Includes private patio
- Steel and masonry construction, high end finishes
- Individual HVAC units
- Minutes from I-95, 15 miles from Baltimore, 25 miles from D.C.

Allen Cornell

+1 301 918 2909

acornell@naimichael.com



The information contained herein has been given to us by the owner of the property or other sources we deem reliable. We have no reason to doubt its accuracy, but we do not guarantee it. Floor plans, site plans and other graphic representations of this property have been reduced and reproduced, and are not necessarily to scale. All information should be verified prior to purchase or lease.

10100 Business Parkway
Lanham, Maryland 20706
+1 301 459 4400
naimichael.com

For Sale
Office Condominiums



7226 Lee Deforest Drive

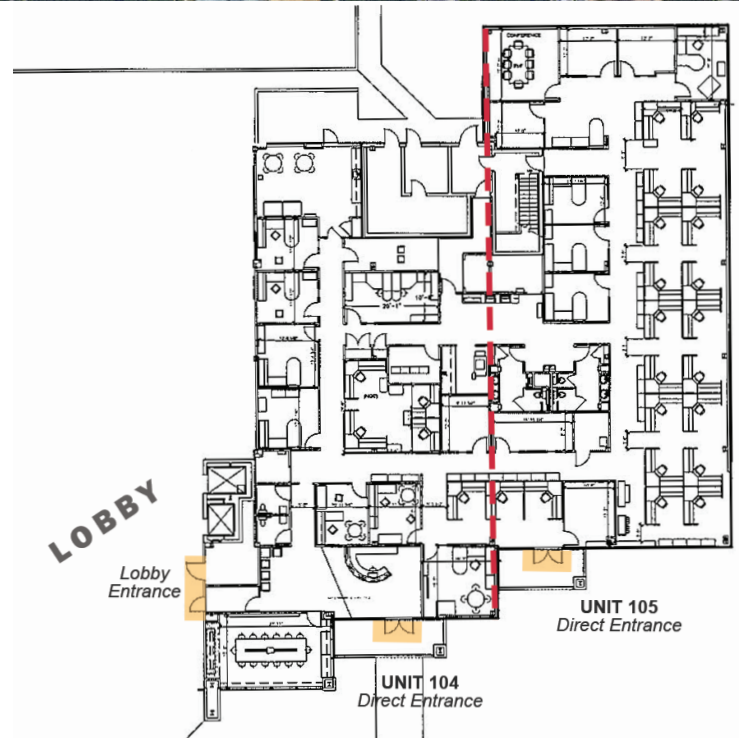
Columbia, Howard County, Maryland

Property Features

- Close proximity to an abundance of amenities
- Located in Columbia's most prominent Business Park with easy access to I-95, Rt. 175 and Snowden River Parkway
- Major tenants in Business Park include Cadmus, Maxim Healthcare, Northrop Grumman, Essex Corporation, SAIC, Harris Corporation, Johns Hopkins University, Allstate, AT&T, Honeywell, Magellan, TRW, Pepsi, Micros, Blue Cross Blue Shield, and Manekin

Allen Cornell

+1 301 918 2909 • acornell@naimichael.com



10100 Business Parkway
Lanham, Maryland 20706
+1 301 459 4400
naimichael.com