

FOR LEASE

1702 Skylyn Dr. Spartanburg, SC 29307

NAI Earle Furman

\$14.00 SF/YR (NNN)



Medical Space | 3,550 SF

- Unit A
- Multiple exam, treatment and procedure rooms
- Spacious physician office, waiting rooms, reception, conference room, nurses station, multiple bathrooms
- ADA accessible
- Adjacent to Mary Black Hospital
- Close proximity to 3 assisted living facilities
- Minutes to I-85 and downtown Spartanburg
- Great parking
- Easily adaptable



Stuart Smith

O: +1 864 398 4444

C: +1 864 316 3284

stuartsmith@naiearlefurman.com

No Warranty Or Representation, Express Or Implied, Is Made As To The Accuracy Of The Information Contained Herein, And The Same Is Submitted Subject To Errors, Omissions, Change Of Price, Rental Or Other Conditions, Prior Sale, Lease Or Financing, Or Withdrawal Without Notice, And Of Any Special Listing Conditions Imposed By Our Principals. No Warranties Or Representations Are Made As To The Condition Of The Property Or Any Hazards Contained Therein Are Any To Be Implied.



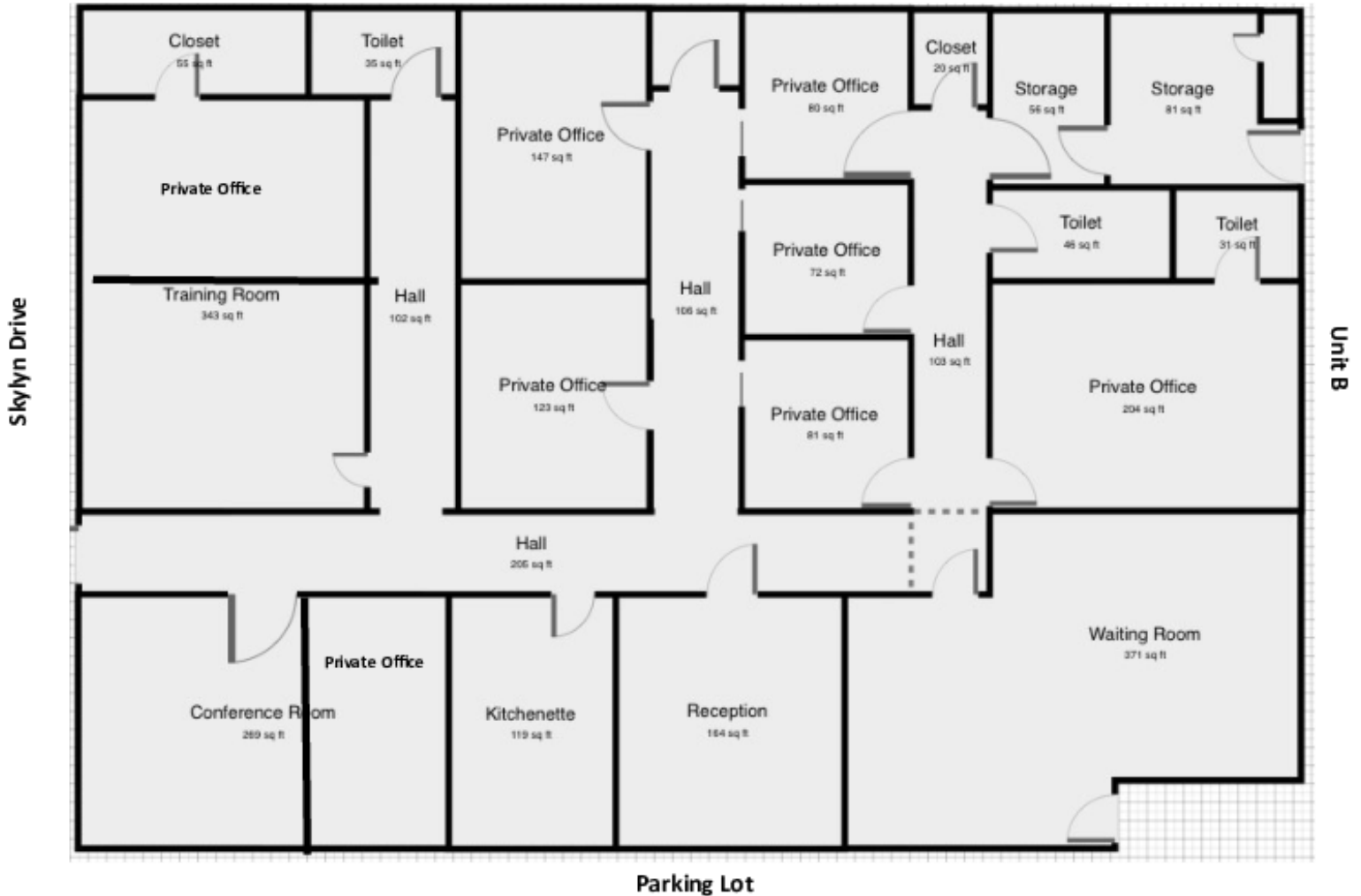
1 Real Estate Way
Spartanburg, SC 29302
naiearlefurman.com

FOR LEASE

1702 Skylyn Dr. Spartanburg, SC 29307

1702 Skylyn Drive, Unit A

3,550 +/- Square Feet



Stuart Smith

O: +1 864 398 4444

C: +1 864 316 3284

stuartsmith@naiearlefurman.com

No Warranty Or Representation, Express Or Implied, Is Made As To The Accuracy Of The Information Contained Herein, And The Same Is Submitted Subject To Errors, Omissions, Change Of Price, Rental Or Other Conditions, Prior Sale, Lease Or Financing, Or Withdrawal Without Notice, And Of Any Special Listing Conditions Imposed By Our Principals No Warranties Or Representations Are Made As To The Condition Of The Property Or Any Hazards Contained Therein Are Any To Be Implied.



1 Real Estate Way
Spartanburg, SC 29302
naiearlefurman.com