

FOR SALE or LEASE

468 E. Main St Spartanburg, SC 29302

NAI Earle Furman

\$14.00 SF/YR (NNN)



Retail | 4,000 SF

- ±4,000 SF retail space in downtown Spartanburg
- Corner lot across the street from the new United Community Bank headquarters
- ±28 on-site parking spaces
- Walkable to dozens of surrounding restaurants and retailers
- Versatile open floor plan
- Potential for single car drive-thru
- Sale price: \$595,000



Katherine Fulmer

O: +1 864 720 1663

C: +1 864 415 5931

kfulmer@naiearlefurman.com

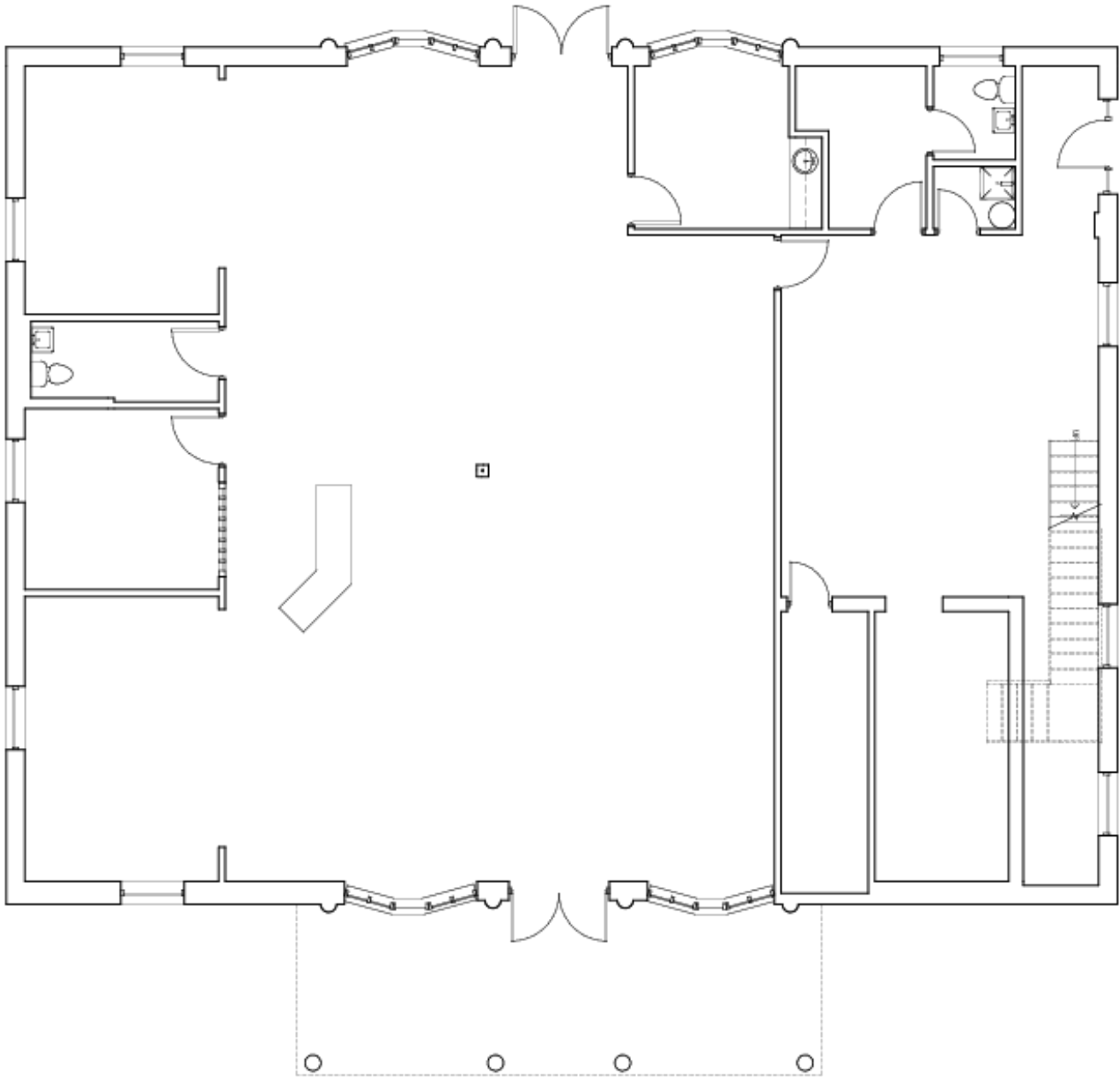
No Warranty Or Representation, Express Or Implied, Is Made As To The Accuracy Of The Information Contained Herein, And The Same Is Submitted Subject To Errors, Omissions, Change Of Price, Rental Or Other Conditions, Prior Sale, Lease Or Financing, Or Withdrawal Without Notice, And Of Any Special Listing Conditions Imposed By Our Principals. No Warranties Or Representations Are Made As To The Condition Of The Property Or Any Hazards Contained Therein Are To Be Implied.



1 Real Estate Way
Spartanburg, SC 29302
naiearlefurman.com

FOR LEASE

468 E. Main St Spartanburg, SC 29302



Katherine Fulmer

O: +1 864 720 1663

C: +1 864 415 5931

kfulmer@naiearlefurman.com

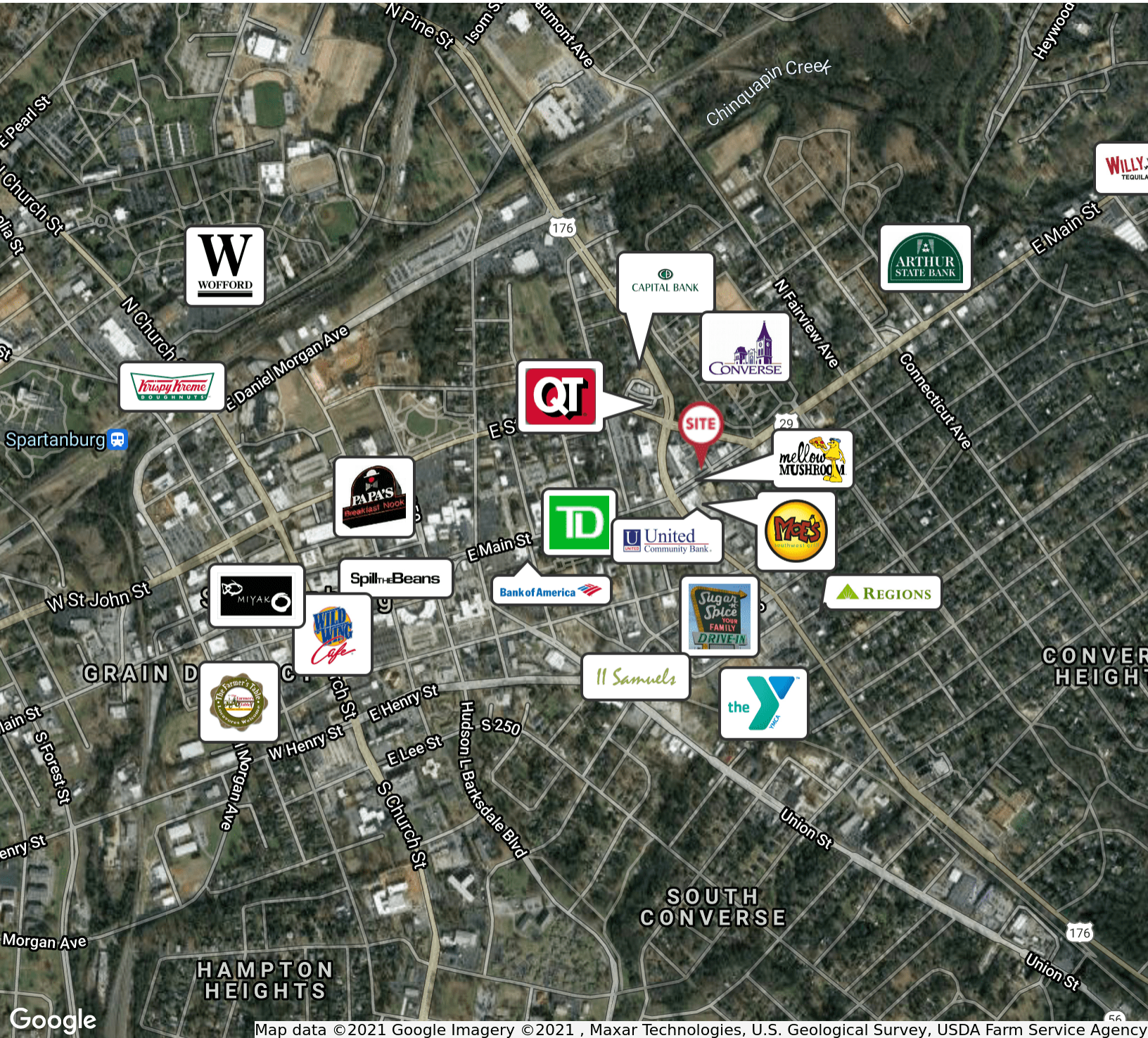
No Warranty Or Representation, Express Or Implied, Is Made As To The Accuracy Of The Information Contained Herein, And The Same Is Submitted Subject To Errors, Omissions, Change Of Price, Rental Or Other Conditions, Prior Sale, Lease Or Financing, Or Withdrawal Without Notice, And Of Any Special Listing Conditions Imposed By Our Principals. No Warranties Or Representations Are Made As To The Condition Of The Property Or Any Hazards Contained Therein Are Any To Be Implied.



1 Real Estate Way
Spartanburg, SC 29302
naiearlefurman.com

FOR LEASE

468 E. Main St Spartanburg, SC 29302



Map data ©2021 Google Imagery ©2021, Maxar Technologies, U.S. Geological Survey, USDA Farm Service Agency

 **Katherine Fulmer**
O: +1 864 720 1663
C: +1 864 415 5931
kfulmer@naiearlefurman.com

No Warranty Or Representation, Express Or Implied, Is Made As To The Accuracy Of The Information Contained Herein, And The Same Is Submitted Subject To Errors, Omissions, Change Of Price, Rental Or Other Conditions, Prior Sale, Lease Or Financing, Or Withdrawal Without Notice, And Of Any Special Listing Conditions Imposed By Our Principals No Warranties Or Representations Are Made As To The Condition Of The Property Or Any Hazards Contained Therein Are Any To Be Implied.

NAI Earle Furman