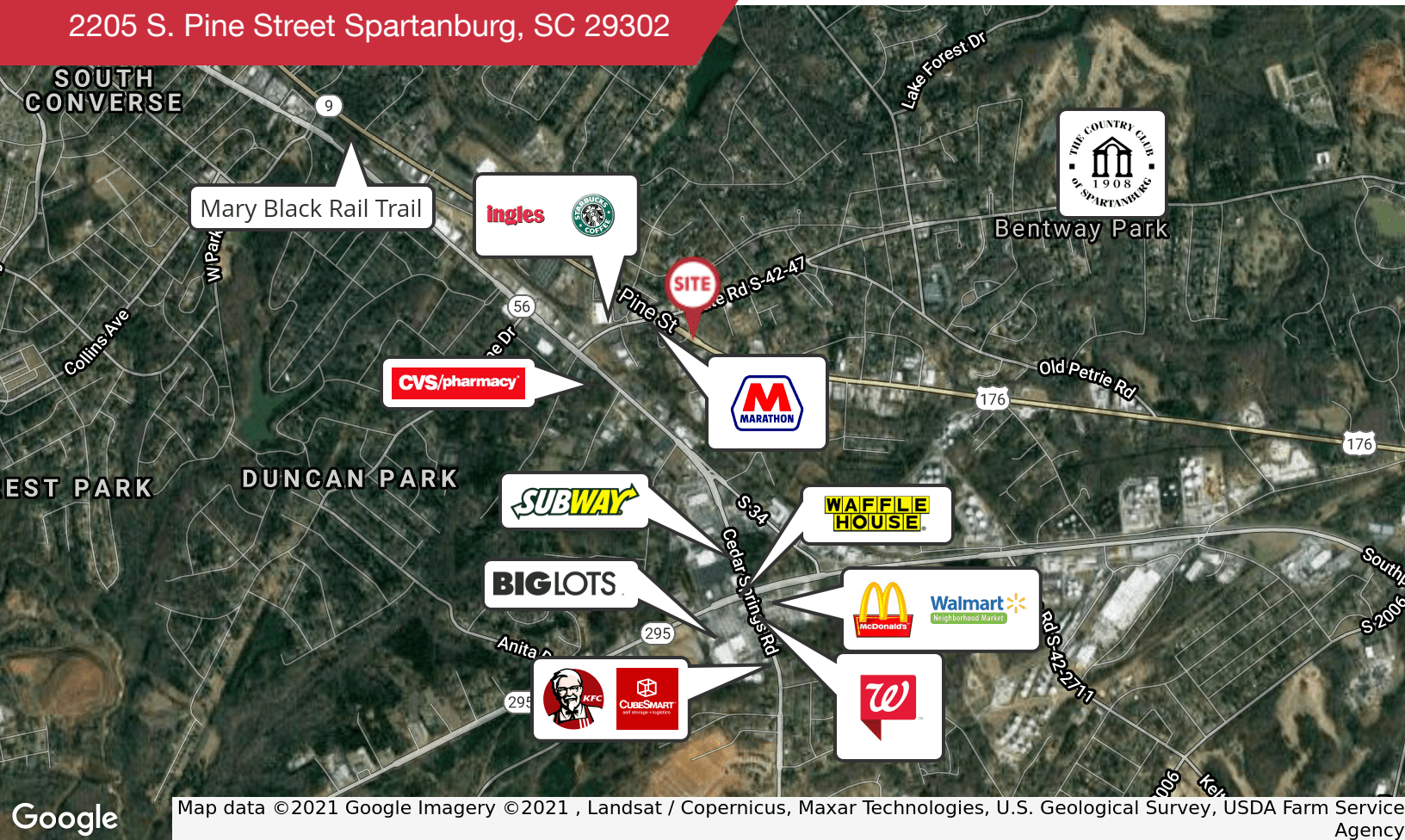


FOR SALE

2205 S. Pine Street Spartanburg, SC 29302

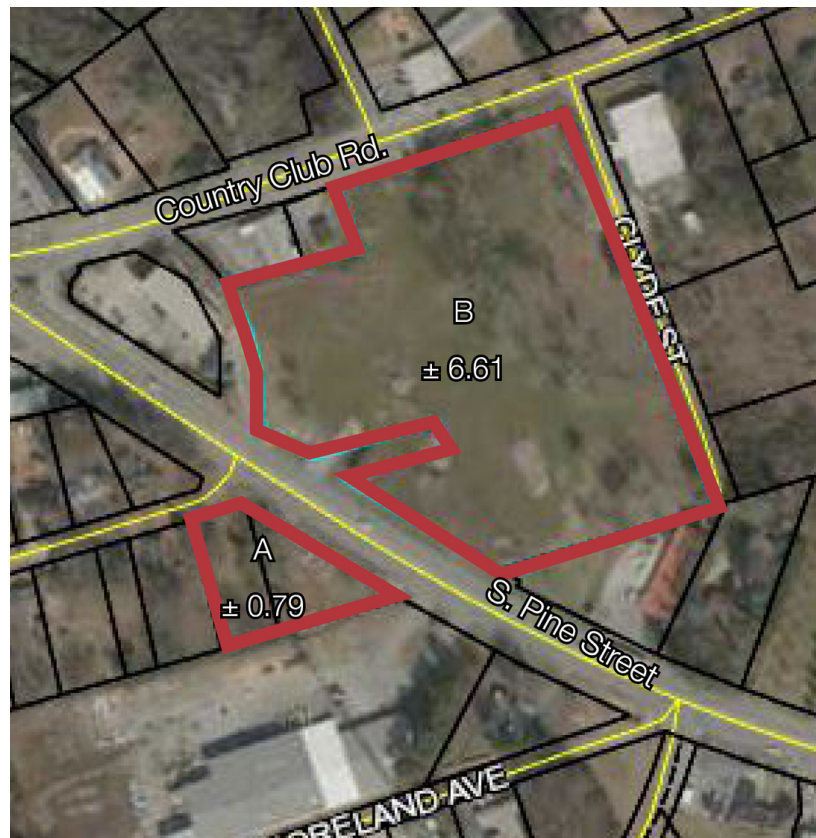
NAI Earle Furman



Map data ©2021 Google Imagery ©2021, Landsat / Copernicus, Maxar Technologies, U.S. Geological Survey, USDA Farm Service Agency

Land | +/- 7.4 Acres

- Great parcel at major intersection of S. Pine Street & Country Club Rd.
- 355' of frontage on S. Pine Street, 360' of frontage on Country Club Rd.
- Located on Country Club Rd. improvement project
- All utilities available
- Close to Mary Black Rail Trail, Country Club of Spartanburg and numerous retail outlets
- 3 miles to Downtown Spartanburg
- 2020 Traffic Count: 22,869 VPD Pine Street; 4,218 VPD Country Club Rd.
- Parcel A & B can be sold separately



Katherine Fulmer

O: +1 864 720 1663

C: +1 864 415 5931

kfulmer@naiearlefurman.com



John Easterling

O: +1 864 398 4444

C: +1 864 205 5500

jeasterling@naiearlefurman.com

No Warranty Or Representation, Express Or Implied, Is Made As To The Accuracy Of The Information Contained Herein, And The Same Is Submitted Subject To Errors, Omissions, Changes Of Price, Rental Or Other Conditions, Prior Sale, Lease Or Financing, Or Withdrawal Without Notice And Of Any Special Listing Conditions Imposed By Our Principals. No Warranties Or Representations Are Made As To The Condition Of The Property Or Any Hazards Contained Therein Are Any To Be Implied.



1 Real Estate Way
Spartanburg, SC 29302
naiearlefurman.com