

FOR SALE

W Corporate Center Drive Clinton, SC 29325



Drone video: <https://vimeo.com/451876654>

Land | 6.16 Acres

- Fast growing intersection of Hwy 72 & I-26
- QT opening 1st quarter 2021
- One mile from I-385 & I-26
- Water, sewer, natural gas
- Graded, pad ready site
- I-26 traffic count: 46,400 VPD
- Will subdivide

OFFERING SUMMARY

SALE PRICE	Contact Broker
LOT SIZE	6.16 Acres

10 MILES INFORMATION

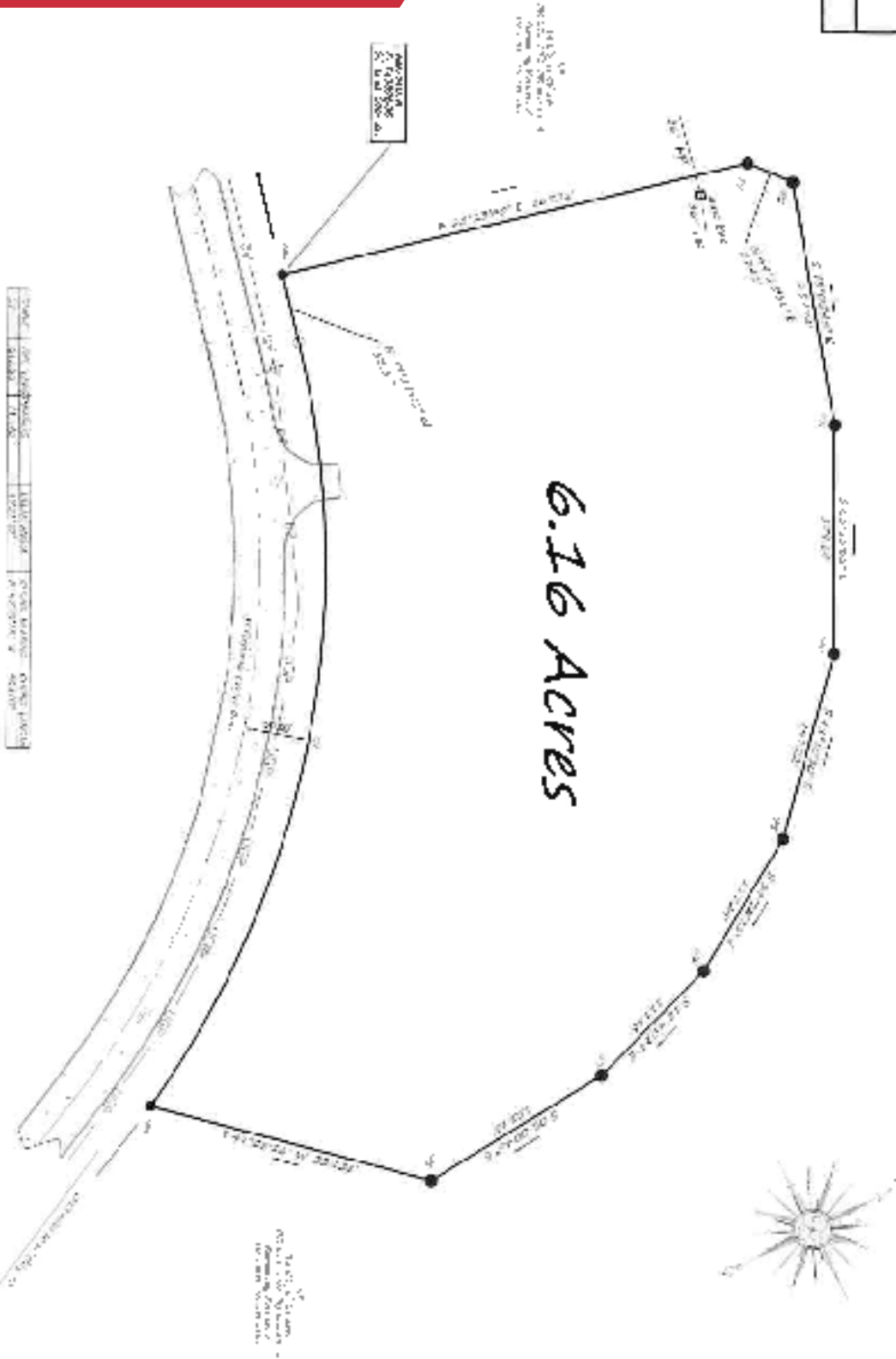
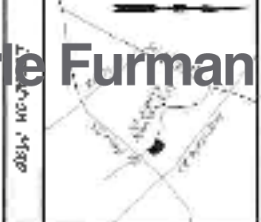


No Warranty Or Representation, Express Or Implied, Is Made As To The Accuracy Of The Information Contained Herein, And The Same Is Submitted Subject To Errors, Omissions, Change Of Price, Rental Or Other Conditions, Prior Sale, Lease Or Financing, Or Withdrawal Without Notice, And Of Any Special Listing Conditions Imposed By Our Principals No Warranties Or Representations Are Made As To The Condition Of The Property Or Any Hazards Contained Therein Are Any To Be Implied.

FOR SALE

W Corporate Center Drive Clinton, SC 29325

NAI Earle Furman



SC GRID NORTH:
NAD 1983 (2012)

Clinton Economic Development Corporation
5341 W. SOUTH EXHIBIT WA
CLINTON, SC 29325
703-244-1111
www.cedc.org

ALTECH SURVEYING, INC.
2000 W. SOUTH EXHIBIT WA
CLINTON, SC 29325
703-244-1111
www.altechsurveying.com

Dan Dunn
O: +1 864 398 4444
C: +1 864 590 5210
ddunn@naiearlefurman.com

No Warranty Or Representation, Express Or Implied, Is Made As To The Accuracy Of The Information Contained Herein, And The Same Is Submitted Subject To Errors, Omissions, Change Of Price, Rental Or Other Conditions, Prior Sale, Lease Or Financing, Or Withdrawal Without Notice, And Of Any Special Listing Conditions Imposed By Our Principals No Warranties Or Representations Are Made As To The Condition Of The Property Or Any Hazards Contained Therein Are Any To Be Implied.

1 Real Estate Way
Spartanburg, SC 29302
naiearlefurman.com