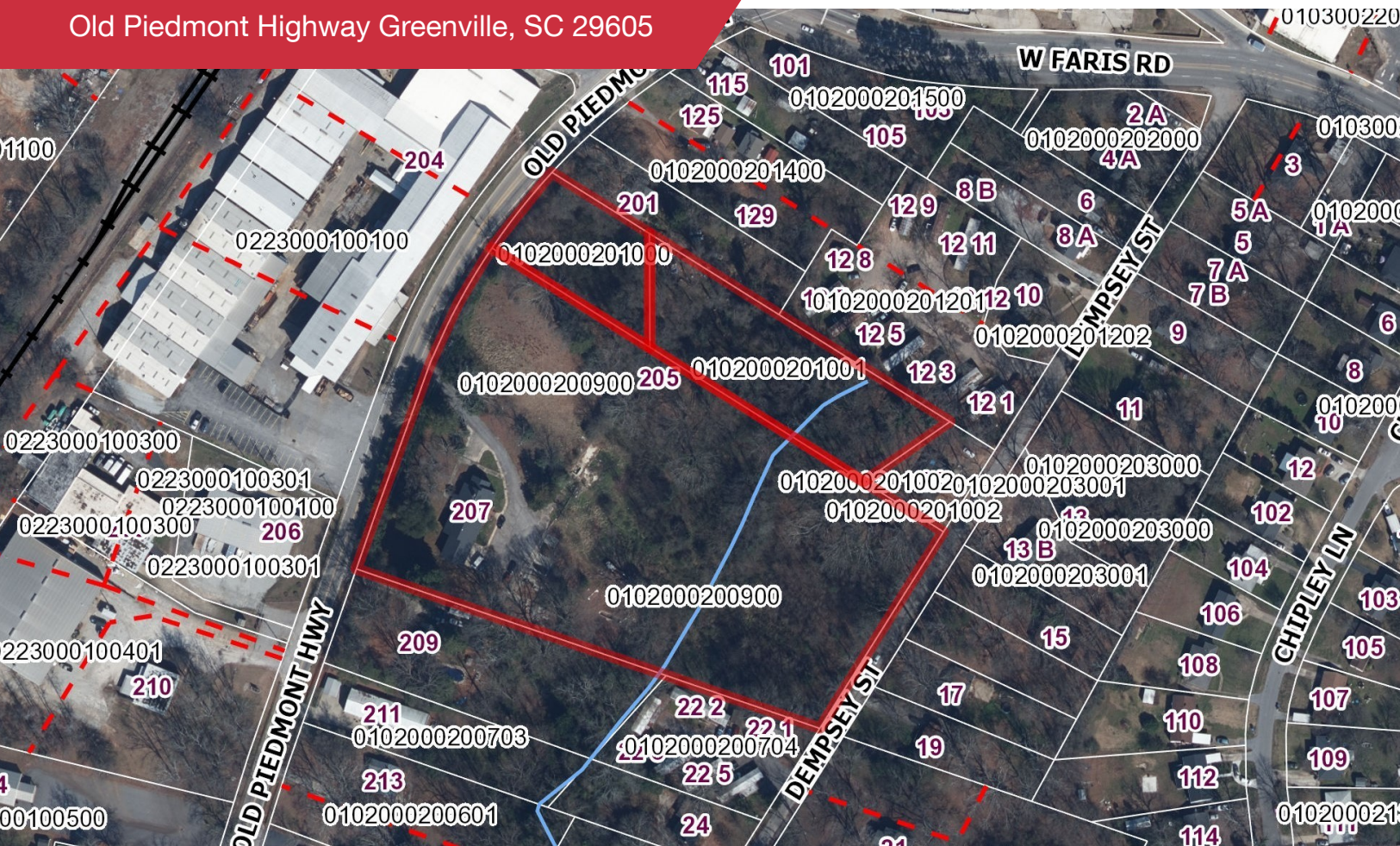


FOR SALE

Old Piedmont Highway Greenville, SC 29605






Development Tract | ±6.93 Acres

- Three (3) contiguous lots located just outside the thriving Dunean community
- Best use: Residential or multifamily development
- Zoned: R-M20/R-10
- Existing single-family home on property
- ±2.5 Miles from downtown Greenville
- Easy access to SC-81, U.S. 25, Highway 20, I-185, and I-85
- Asking Price: \$1,000,000

OFFERING SUMMARY	
SALE PRICE	\$1,000,000
LOT SIZE	6.93 Acres
ZONING	R-M20/R-10

5 MILES INFORMATION

		
110,430	45,278	\$51,831
TOTAL POPULATION	TOTAL HOUSEHOLDS	AVERAGE HH INCOME

No Warranty Or Representation, Express Or Implied, Is Made As To The Accuracy Of The Information Contained Herein, And The Same Is Submitted Subject To Errors, Omissions, Change Of Price, Rental Or Other Conditions, Prior Sale, Lease Or Financing, Or Withdrawal Without Notice, And Of Any Special Listing Conditions Imposed By Our Principals No Warranties Or Representations Are Made As To The Condition Of The Property Or Any Hazards Contained Therein Are Any To Be Implied.

Area Maps

Old Piedmont Highway Greenville, SC 29605



Map data ©2021 Google Imagery ©2021, City of Greenville GIS, Maxar Technologies, U.S. Geological Survey, USDA Farm Service Agency

✉ **Chandler Ayers**
O: +1 864 201 2221
C: +1 864 201 2221
cayers@naiearlefurman.com

No Warranty Or Representation, Express Or Implied, Is Made As To The Accuracy Of The Information Contained Herein, And The Same Is Submitted Subject To Errors, Omissions, Change Of Price, Rental Or Other Conditions, Prior Sale, Lease Or Financing, Or Withdrawal Without Notice, And Of Any Special Listing Conditions Imposed By Our Principals. No Warranties Or Representations Are Made As To The Condition Of The Property Or Any Hazards Contained Therein Are Any To Be Implied.

NAI Earle Furman