

VACANT LAND FOR SALE

# Truman Park

CITIZENS PARKWAY SE · NORTH PORT, FL · 34288



## PROPERTY OVERVIEW

Property Acreage	60.33 acres
Parcel ID	1118-04-0010
Zoning	PCDN

## PROPERTY FEATURES

- + Part of the City of North Port's Activity Center #5, a 670 acre mixed-use development
- + Approved for commercial, office, institutional, and multi-family development purposes
- + Parcel can be subdivided
- + Approximately 0.8 miles of frontage along Citizens Pkwy

## LOCATION

- + Accessible from I-75 & US Highway 41
- + At the intersection of Toledo Blade Blvd & Price Blvd
- + Conveniently centered around multiple major retailers such as Publix, Hobby Lobby, Wawa, and many more

## DEMOGRAPHIC INFORMATION

RADIUS	1 MILE	3 MILE	5 MILE
2019 Population	2,782	33,471	67,967
2019 Total Households	1,005	12,182	26,684
2019 Median Age	38.7	39.5	45.0
2019 Median HH Income	\$57,700	\$59,575	\$55,771

Source: Esri Market Forecast Profile/US Census Bureau

For additional information, contact:

**Greg McNutt**

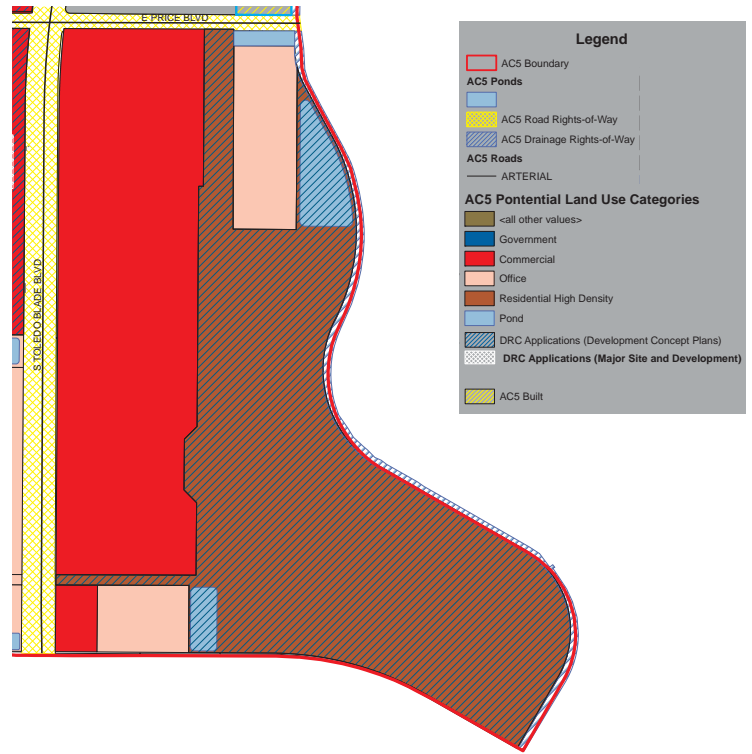
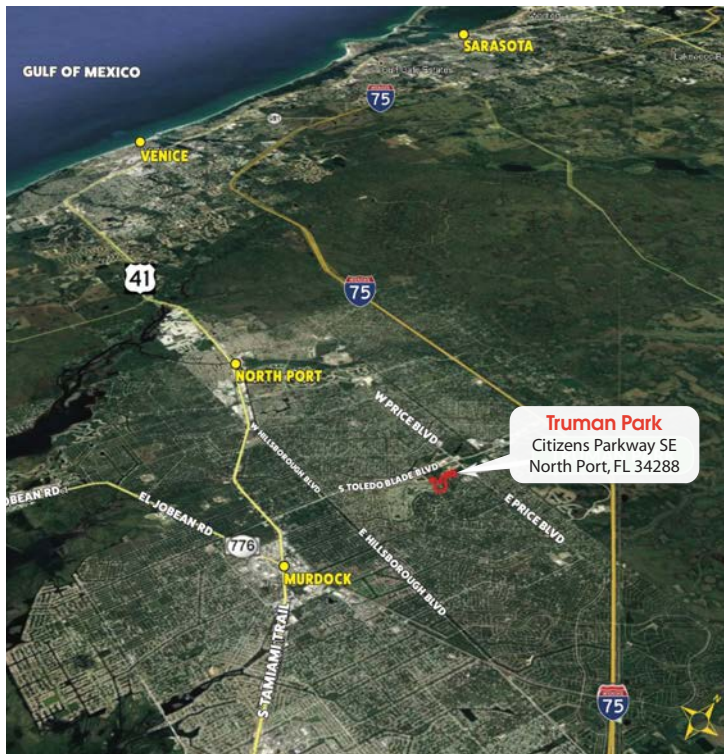
(813) 477-2276 mobile · (813) 908-1727 office  
gmcnutt@ciminelli.com



VACANT LAND FOR SALE

# Truman Park

CITIZENS PARKWAY SE · NORTH PORT, FL · 34288



For additional information, contact:

**Greg McNutt**  
 (813) 908-1727 office  
 gmcnutt@ciminelli.com

