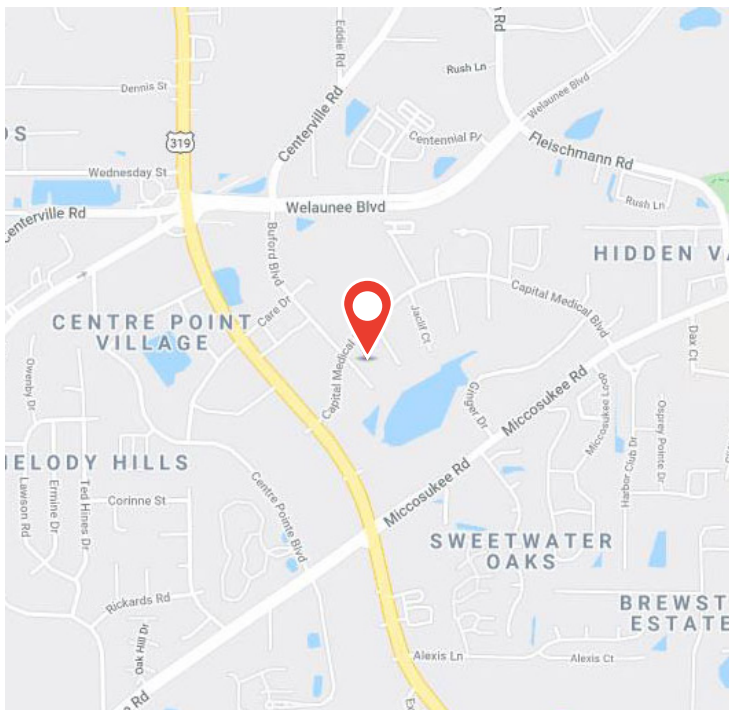


MEDICAL OFFICE CONDO FOR LEASE

# 1835 Buford Court

1835 BUFORD COURT • TALLAHASSEE, FL • 32308

NEAR CAPITAL REGIONAL MEDICAL CENTER



## PROPERTY OVERVIEW

Square Footage Available	1,700 sf
Property Type	Medical Office
Property Size	8,741 sf
Year Built	1990
Parking Ratio	2.17/1,000

## PROPERTY FEATURES

- + Newly renovated
- + Commercial medical zoning
- + Ample parking

## LOCATION

- + Prime frontage on Capital Medical Blvd
- + Walking distance to Capital Regional Medical Center
- + Close to other medical providers

For additional information, contact:

**J.R. Long, CCIM**  
(850) 509-2137 mobile  
jrlong@ciminelli.com

**Jennie Bram**  
(850) 443-3090 mobile  
jbram@ciminelli.com

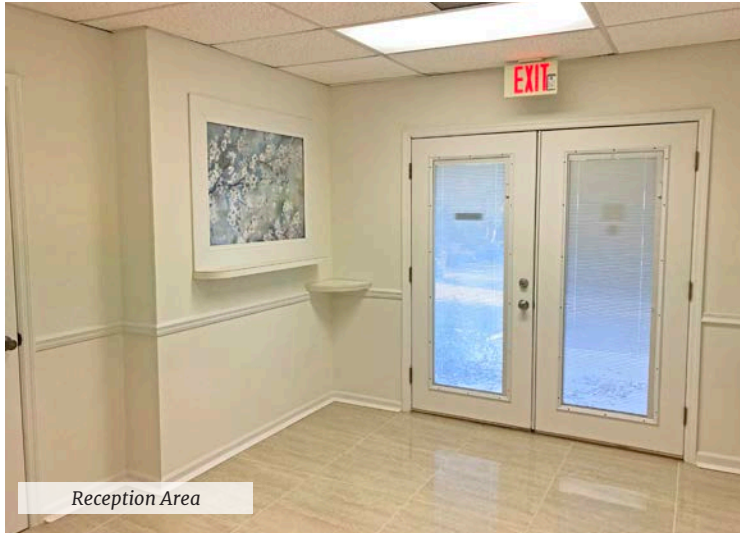
 **Ciminelli**  
REAL ESTATE SERVICES  
**PROCTOR & LONG GROUP**



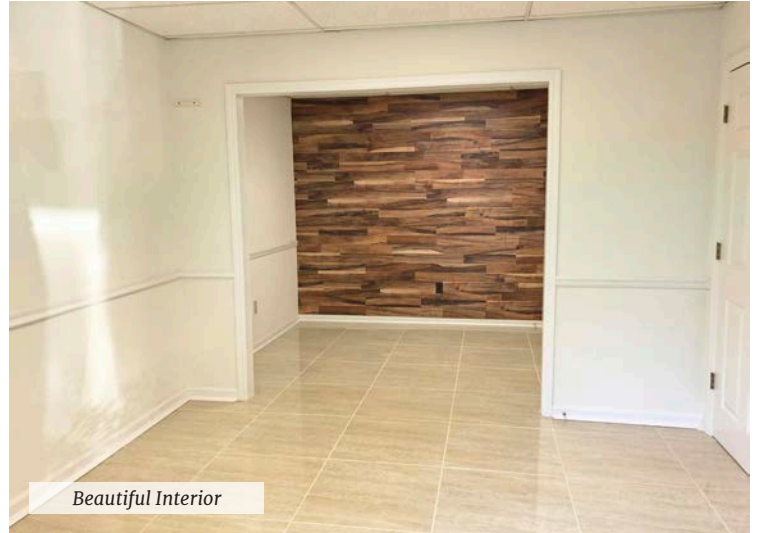
MEDICAL OFFICE CONDO FOR LEASE

# 1835 Buford Court

1835 BUFORD COURT • TALLAHASSEE, FL • 32308



Reception Area



Beautiful Interior

## DEMOGRAPHIC INFORMATION

RADIUS	1 MILE	3 MILE	5 MILE
2020 Population	6,951	50,452	140,295
2020 Total Households	3,031	22,891	57,300
2020 Median Age	38.8	39.5	33.1
2020 Median HH Income	\$55,071	\$61,887	\$55,774

Source: Esri Market Profile/US Census Bureau



Open Area

For additional information, contact:

**J.R. Long, CCIM**  
(850) 509-2137 mobile  
jrlong@ciminelli.com

**Jennie Bram**  
(850) 443-3090 mobile  
jbram@ciminelli.com

 **Ciminelli**  
REAL ESTATE SERVICES  
**PROCTOR & LONG GROUP**

825 Thomasville Rd • Tallahassee, FL 32303 + Office Phone: (850) 765-7063 + [www.CiminelliFlorida.com](http://www.CiminelliFlorida.com)

All information given herein is obtained from sources considered reliable. However, we are not responsible for misstatement of facts, errors, omissions, prior sale, withdrawal from market, modification of mortgage commitment, terms and considerations, or change in price without notice. The information supplied herein is for informational purposes only and shall not contain a warranty or assurance that said information is correct. Any person intending to rely upon the information supplied herein should verify said information independently.