

MEDICAL OFFICE CONDO FOR SALE

Memorial Medical Center - Suite 403

2919 SWANN AVENUE • TAMPA, FL • 33609

ADJACENT TO MEMORIAL HOSPITAL



PROPERTY OVERVIEW

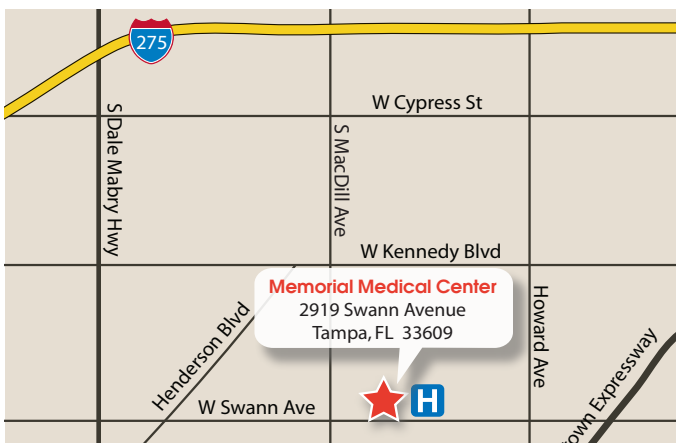
Square Footage Available	1,237 sf
Property Size	44,883 rsf (4 stories)
Sale Price	\$319,000
Class	B
Parking Ratio	4.5/1,000 - Reserved Doctor Parking

PROPERTY & SUITE FEATURES

- + Multiple exam rooms, reception area, waiting room, and 2 restrooms
- + 1 reserved Doctor parking space
- + Abundant parking for patients
- + On-site Property Management
- + Within walking distance to hospitals without crossing any streets

LOCATION

- + Prime South Tampa location, adjacent to Memorial Hospital and near St Joseph's Hospital
- + Easy access via I-275, the Crosstown, and Dale Mabry Hwy



For additional information, contact:

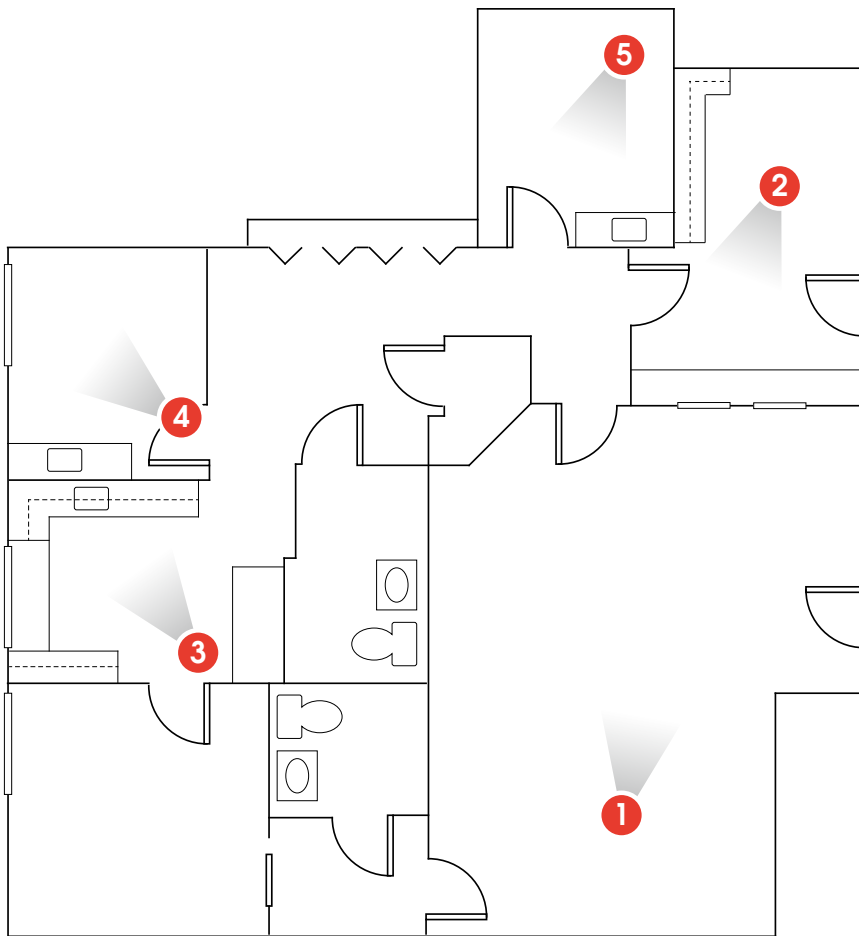
Thomas Hernandez, SIOR, CCIM
(813) 494-4090 mobile • (813) 908-1727 office
thernandez@ciminelli.com



MEDICAL OFFICE CONDO FOR SALE

Memorial Medical Center - Suite 403

2919 SWANN AVENUE • TAMPA, FL • 33609



The above floor plan is not to scale. The available space shown is believed to be correct but is subject to change.

For additional information, contact:

Thomas Hernandez, SIOR, CCIM
(813) 494-4090 mobile • (813) 908-1727 office
thernandez@ciminelli.com



14499 N Dale Mabry Hwy, Suite 200 • Tampa, FL 33618 + phone: (813) 908-1727 • fax: (813) 908-5518 + www.CiminelliFlorida.com

All information given herein is obtained from sources considered reliable. However, we are not responsible for misstatement of facts, errors, omissions, prior sale, withdrawal from market, modification of mortgage commitment, terms and considerations, or change in price without notice. The information supplied herein is for informational purposes only and shall not contain a warranty or assurance that said information is correct. Any person intending to rely upon the information supplied herein should verify said information independently.