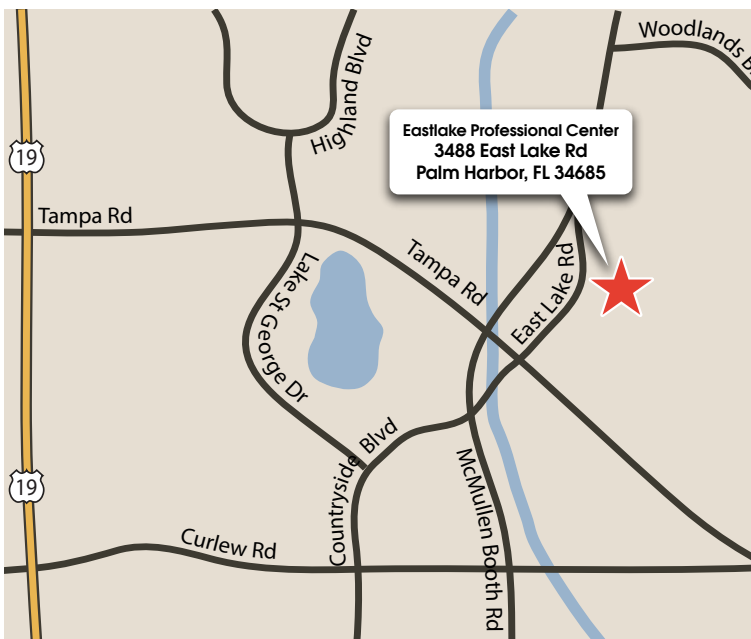


OFFICE/MEDICAL SPACE FOR LEASE

Eastlake Professional Center

3488 EAST LAKE ROAD • PALM HARBOR, FL • 34685

NEGOTIABLE LEASE TERMS!



PROPERTY OVERVIEW

SF Available for Lease	Two suites at 3,029 sf
Property Size	22,000 sf
Property Type	Office/Medical
Year Built	2001
Parking Ratio	6.00/1,000

PROPERTY FEATURES

- + Ideal for professional or medical office user
- + Upscale interior and beautiful finishes

LOCATION

- + Located in the upscale community of Boot Ranch
- + Easy access to McMullen Booth Rd, Tampa Rd, and US19
- + Hospitals, restaurants, and retail shops nearby

For additional information, contact:

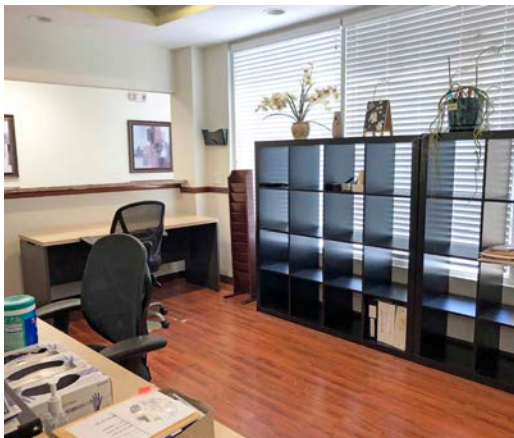
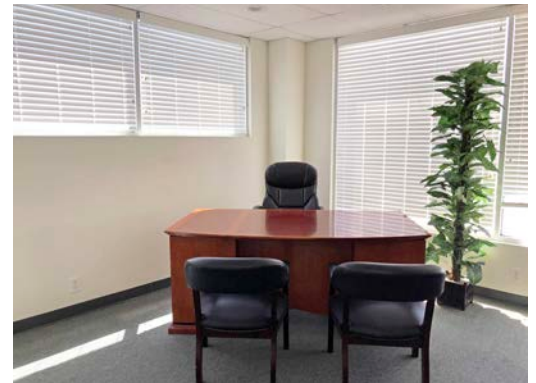
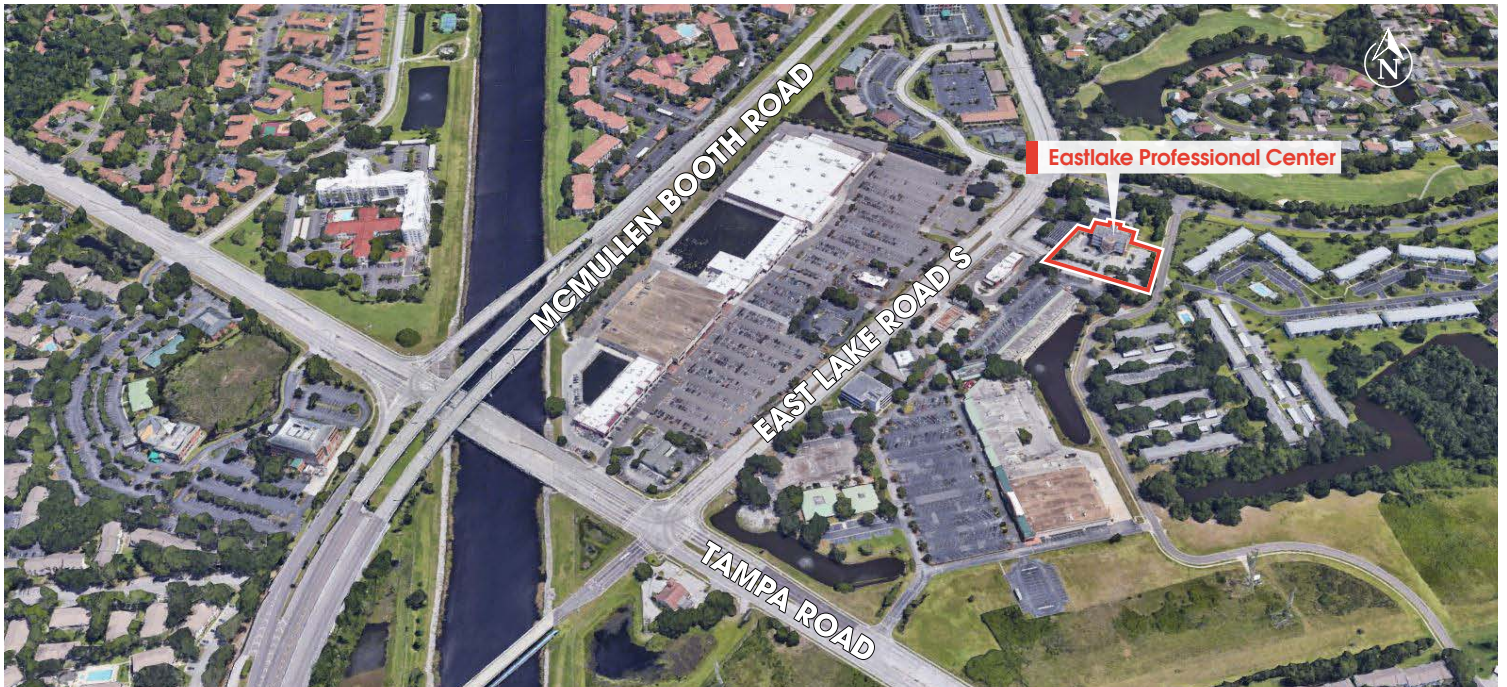
Judy Healey, RPA
(813) 299-5883 mobile • (813) 908-1727 office
jhealey@ciminelli.com



OFFICE/MEDICAL SPACE FOR LEASE

Eastlake Professional Center

3488 EAST LAKE ROAD • PALM HARBOR, FL • 34685



For additional information, contact:

Judy Healey, RPA
(813) 299-5883 mobile • (813) 908-1727 office
jhealey@ciminelli.com

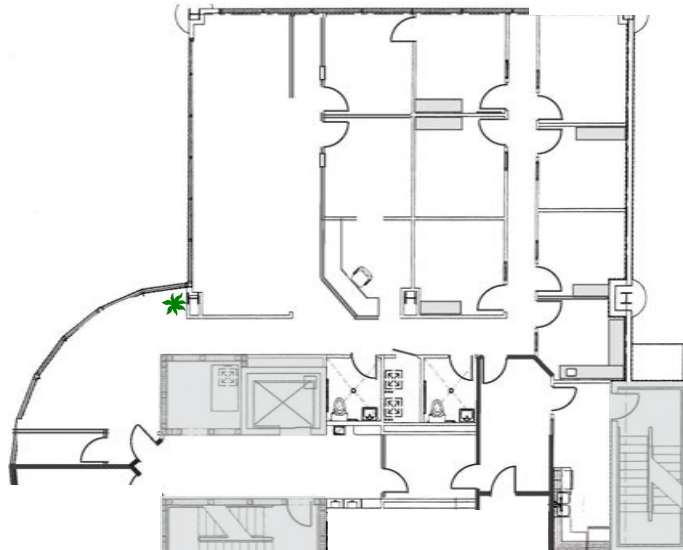


OFFICE/MEDICAL SPACE FOR LEASE

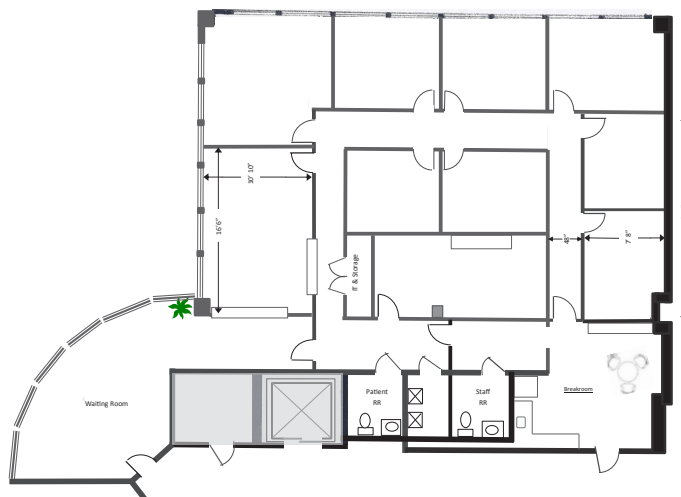
Eastlake Professional Center

3488 EAST LAKE ROAD • PALM HARBOR, FL • 34685

SECOND FLOOR - SUITE 203/204



SECOND FLOOR - SUITE 403/404



For additional information, contact:

Judy Healey, RPA
(813) 299-5883 mobile • (813) 908-1727 office
jhealey@ciminelli.com



14499 N Dale Mabry Hwy, Suite 200 • Tampa, FL 33618 + phone: (813) 908-1727 • fax: (813) 908-5518 + www.CiminelliFlorida.com

All information given herein is obtained from sources considered reliable. However, we are not responsible for misstatement of facts, errors, omissions, prior sale, withdrawal from market, modification of mortgage commitment, terms and considerations, or change in price without notice. The information supplied herein is for informational purposes only and shall not contain a warranty or assurance that said information is correct. Any person intending to rely upon the information supplied herein should verify said information independently.